

REGISTERED COMPANY NUMBER: 09061804 (England and Wales)

**Creative Children's Academy Trust
(A Company Limited by Guarantee)**

Report of the Trustees and

Financial Statements for the Period 1 September 2022 to 31 May 2023



Harris & Co Limited
Chartered Accountants & Statutory Auditor
Marland House
13 Huddersfield Road
Barnsley
South Yorkshire
S70 2LW

Creative Children's Academy Trust

Contents of the Financial Statements for the Period 1 September 2022 to 31 May 2023

	Page
Reference and Administrative Details	1
Report of the Trustees	2 to 7
Governance Statement	8 to 11
Statement on Regularity, Propriety and Compliance	12
Statement of Trustees' Responsibilities	13
Report of the Independent Auditors	14 to 16
Independent Accountant's Report on Regularity	17 to 18
Statement of Financial Activities	19
Balance Sheet	20
Cash Flow Statement	21
Notes to the Cash Flow Statement	22
Notes to the Financial Statements	24 to 41

Creative Children's Academy Trust

Reference and Administrative Details for the Period 1 September 2022 to 31 May 2023

MEMBERS

K Bottomley
P Davis
S Faulkner-Duke
S Walker

TRUSTEES

J Armstrong
C Cannings
A Sandhal
T Toms
S Walker (Chair of Trustees)
M Ward

TRUST EXECUTIVE TEAM

Chief Executive Officer and Accounting
Officer
Head Teacher, Anston Greenlands Primary
school
Head Teacher, Redscope Primary school
Chief Finance Officer
Executive Assistant to CEO

T Toms
A Wirth
A Bradbury
H Screation
A Humphries

COMPANY NAME

Creative Children's Academy Trust

REGISTERED OFFICE

Thorpe Hesley Primary School
Upper Wortley Road
Thorpe Hesley
Rotherham
South Yorkshire
S61 2PL

COMPANY REGISTRATION NUMBER

09061804 (England and Wales)

INDEPENDENT AUDITORS

Harris & Co Limited
Chartered Accountants & Statutory Auditor
Marland House
13 Huddersfield Road
Barnsley
South Yorkshire
S70 2LW

BANKERS

Lloyds Bank
PO Box 1000
Andover

Creative Children's Academy Trust
Report of the Trustees
for the Period 1 September 2022 to 31 May 2023

The trustees present their report for the period ending 31st May 2023, together with the financial statements and auditor's report of the charitable company for the period 1st September 2022 to 31st May 2023. The report serves the purposes of both a trustees' report, and a directors' report under company law.

The Trust operated three Primary academies in Rotherham, South Yorkshire - Anston Greenlands Primary school, Redscope Primary school and Thorpe Hesley Primary school between 1st September 2022 and 31st December 2022. On 1st January 2023, all three schools transferred out of the Trust to join the New Collaborative Learning Trust ("NCLT") and so the Statement of Financial Activity represents the four months activity. The Trust's academies had a combined pupil capacity of 1,120 and had a roll of 1,117.

STRUCTURE, GOVERNANCE AND MANAGEMENT

Constitution

The Creative Children's Academy Trust (CCAT) is a company limited by guarantee and an exempt charity. The charitable company's memorandum and articles of association are the primary governing documents of the academy trust. The Trustees of CCAT are also the directors of the charitable company for the purposes of company law. The charitable company operated as Creative Children's Academy Trust until the schools transferred out of the Trust on 1 January 2023.

Details of the Trustees who served during the year, and to the date these accounts are approved are included in the Reference and Administrative Details on page 1.

Members' Liability

Each member of the charitable company undertakes to contribute to the assets of the charitable company in the event of it being wound up while they are a member, or within one year after they cease to be a member, such amount as may be required, not exceeding £10.00, for the debts and liabilities contracted before they ceased to be a member.

Trustees' Indemnities

In accordance with normal commercial practice the academy trust protects Trustees and officers from claims arising from negligent acts, errors or omissions occurring whilst on academy business. This is provided through the DfE's Risk Pooling Arrangement and provides cover up to £10,000,000 on any one claim.

Method of Recruitment and Appointment or Election of Trustees

The Trust during this period had 4 Members and had no plans to increase this number in the light of significant, planned changes to its constitution outside the reporting period. Recruitment of members was not a priority for the Trust due to the plan for CCAT to be wound up and the schools to join the New Collaborative Learning Trust (NCLT) from 1st January 2023.

The Members could appoint up to 12 Trustees by Ordinary Resolution under Article 50. Trustees may themselves have appointed Co-opted Trustees under Article 58. Again, recruitment of Trustees was not a priority during this period.

The Trust's Chief Executive Officer was also a Trustee, appointed by ordinary resolution under the terms of Article 57. She did not have a vote.

The Trust's governance structure included a local-level governing board at each of its academy schools. There were parent-elected governors at each CCAT school, which satisfied the provisions of Article 101A. There were therefore no parent Trustees on the Board.

The Trust believed that the size of the Board of Trustees should reflect its strategic role and its relative size as a multi-academy trust comprising three schools. The evaluation of skills at Trust level shows it to be small but dynamic, with a wealth of skills and experience relevant to its role.

Policies and Procedures Adopted for the Induction and Training of Trustees

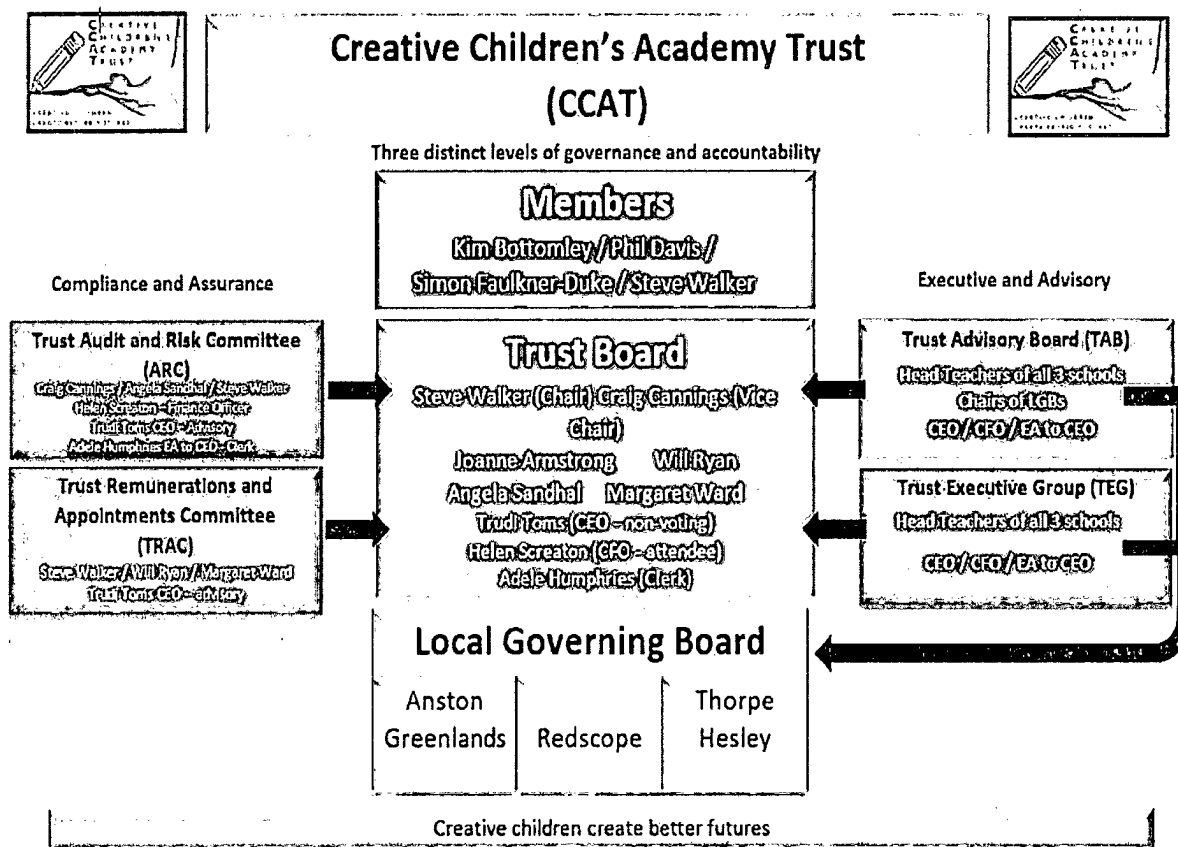
Trustees received briefing on the role of a Director of a Company, the role of a charity trustee and the Trust governance model. The remainder of the briefing is dependent on individual circumstances.

Creative Children's Academy Trust

Report of the Trustees for the Period 1 September 2022 to 31 May 2023

Organisational Structure

The Chief Executive Officer (CEO) is the Accounting Officer (AO) for the Trust. Operational issues are managed by the CEO and the Trust Executive Group, which comprises the Head Teachers of the Trust schools, with the Trust Chief Finance Officer (CFO) and the CEO's Executive Assistant. The Trust also had an Advisory Board which brought together the Chairs of the Local Governing Boards with the CEO, Head Teachers, CFO and EA/CEO.



Arrangements for setting pay and remuneration of key management personnel

The Trust opted to continue to follow nationally agreed recommendations for pay and remuneration for its schools. The pay and remuneration of the Trust's key management personnel therefore reflected the benchmarks, parameters and criteria set at a national level. The adoption of the national agreements was a recommendation of the Local Authority with which the Trust had a Service Level Agreement for Human Resources services, including pay and conditions of service and payroll. For the setting of pay relating to posts not covered by the arrangements for schools, the Trust considered the DfE's guidance on setting executive pay and undertook bench-marking exercises to ensure rates were appropriate to the grade.

Trade union facility time

During the accounting period there were no employees who were relevant union officials during the relevant period.

Related Parties and other Connected Charities and Organisations

The Trust has no related party connections or connections with other charities or organisations.

Creative Children's Academy Trust

Report of the Trustees for the Period 1 September 2022 to 31 May 2023

OBJECTIVES AND AIMS

Objects and Aims

The Trust's objects are specified in its Articles of Association: "To advance for the public benefit.....by establishing.....and developing schools.....to provide full or part time education for children of compulsory school age".

"Creative children create better futures" is the concept which best describes the global aim.

The drivers of the Creative Children's Academy Trust can be described by these three simple statements, one from each of our schools - "love to learn", "to be the best we can be" and "where children grow". Schools that are part of the Trust share a common bond and that is to achieve the mission and goals through the use of creativity in everything we do.

In considering the future of the CCAT, account was taken of these objects and aims to ensure the schools remained within a Trust which shared similar values and it is planned that CCAT will join NCLT from 1st January 2023.

Public Benefit

In setting our objectives and planning our activities the trustees have carefully considered the Charity Commission's general guidance on public benefit.

Achievement of Objectives

Over the period of this report, the Trust had three primary objectives. At the level of our individual schools: (a) to externally evaluate core curriculum and selected elements of the wider curriculum as part of CCAT's programme of school improvement; and (b) to continue to address the lingering impact of the Covid-19 pandemic on children's learning and on teachers' well-being. At strategic level, the Board undertook a Fundamental Review of performance, growth and future development. The next section comments on the outcomes of the work.

STRATEGIC REPORT - key performance indicators

There is no change to the Key Performance Indicators from the previous annual report up to September 2022. Schools and the Trust Board have continued to address all areas for development whilst taking into consideration the future of the CCAT.

The Trust Level Fundamental Review, reported in the Trustee Report to 31st August 2022, established that CCAT, as a small MAT, had to accept that its internal capacity to continue to drive school improvement and grow by taking on new schools, was limited. As a result, these conclusions were the catalyst to the Trust exploring ways to grow, develop and prosper other than by taking on additional schools. The proposed merger with NCLT from 1st January 2023 was then put in process.

Financial performance

Budgets continue to be very tight in all our schools. The schools are aware that in-year budgets are becoming increasingly stretched. The Trust is extremely concerned about the impact of rising utility and other costs as well as the impact of staffing pay increases. Like other academy trusts, it is clear that more funding will need to be made available to the education sector if schools are to keep within their annual budgets. Without additional funding, no amount of frugality will allow them to balance budgets.

The Trust's financial position, in terms of the 3-year Budget Forecast submitted to the Department in July 2022, confirmed the lack of opportunity to invest for growth. This was also a key consideration in working to ensure stability and continued growth for the schools moving forward.

Going Concern

As noted in the "Plans for future periods" below, the Trust merged with New Collaborative Learning Trust (NCLT) transferring all 3 schools out of the Trust to NCLT on 1 January 2023. The financial statements have therefore been prepared on the break-up basis. No material adjustments were required as a result of ceasing to apply the going concern basis.

Creative Children's Academy Trust

Report of the Trustees for the Period 1 September 2022 to 31 May 2023

Financial Review

The largest proportion of the Trust's income is obtained from the Education and Skills Funding Agency (ESFA) in the form of recurrent grants, the use of which is restricted to particular purposes. Any grants received from ESFA and associated expenditure for the period of operation to 31st December 2022 are shown in restricted funds in the Statement of Financial Activities.

The Trust also receives grants from ESFA and from other government bodies, including capital grants. In accordance with Statement of Recommended Practice 2019 ("SORP 2019") such grants are also shown in the Statement of Financial Activities as restricted income.

During the period ended 31 May 2023, total income was £2,216,308 (31/08/2022: £6,397,282) and total expenditure was £10,104,896 (31/08/2022: £7,038,609). Net expenditure was £7,888,588 (31/08/2022: £641,327). Total expenditure however, included £7,585,859 transfer out on academies leaving the Trust. This operating income and expenditure represented the 4 month period from 1st September 2022 to 31 December 2022.

An actuarial gain of £433,000 (31/08/2022: £4,047,000) arose on the Trust's share of the Local Government Pension Scheme (LGPS) surplus during the year. The Statement of Financial Activities therefore shows a total net decrease in funds in the year of £7,455,588 (31/08/2022: increase of £3,405,673).

The actuarial gain together with other movements has resulted in an increase in the LGPS surplus of £411,000 from a £48,000 deficit at 31/08/2022 to a £363,000 surplus at 31 December 2022.

At 31 May 2023, the Trust had net assets/total funds of £nil (31/08/2022: £7,455,588), due to the transfer of all funds to a new Trust when all 3 schools transferred out of the Academy Trust to a new Multi Academy Trust. The transfer of funds comprised fixed assets with a net book value of £6,663,958, other assets of £945,059 (including bank balances of £707,841), and liabilities (excluding the LGPS pension deficit) of £386,158. The LGPS surplus that was transferred to the new Trust was £363,000.

Reserves and Investment policy

The three individual schools in the Trust each had their own limited reserves. The Trust Reserves and Investment policy specified that individual schools must agree with their Governing Boards any plans for the use of reserves held at local level.

The Trust did not allocate specific funds for investment, capital or otherwise in the reporting period.

Creative Children's Academy Trust

Report of the Trustees for the Period 1 September 2022 to 31 May 2023

Principal Risks and Uncertainties

The principal risks in this period have been:

The merge of CCAT with a larger and more established Trust (NCLT) to become part of this organisation.

The publication of the White Paper during the reporting period encouraged the Trust to extend its planned fundamental review beyond current performance and growth and into discussions about the opportunities for future development. The principal risk was that the Trust as a very small MAT would find itself without the internal capacity necessary to support growth in line with the expectations set out in the White Paper for larger MATs covering bigger numbers of individual institutions. The Trust's actions as a result were to broker a merger from 1st January 2023.

Performance in our schools has suffered as children's learning and attitudes are still impacted to some extent by the pandemic.

The reintroduction of statutory testing in this reporting period has delivered mixed results. Teachers across all year groups have reported seeing the continued but diminishing effects of time out of school (and home-based learning) on expected levels of ability and performance in test situations. There also continue to be issues around Speaking and Listening skills which were impacted by isolation. These identified gaps in learning for all year groups have been addressed by the schools, however, impact has been greater in some year groups than others. The schools continue to address this and strive for accelerated progress and above national attainment.

Fundraising

Fundraising at Trust schools is self-managed and promoted and conforms with school finance policy. The monitoring of fundraising activity in schools is undertaken by the local governing board.

Plans for future periods

In September 2022, the Department for Education's Regional Director for Yorkshire and Humber approved a proposal for CCAT to merge with the New Collaborative Learning Trust (NCLT). NCLT comprises three sixth-form colleges in Pontefract, Bradford and Doncaster and Wingfield Academy in Rotherham. CCAT and its three primary schools have been informally working in collaboration with Wingfield Academy to enhance the curriculum offer in new and exciting ways over a period of time.

NCLT's ethos, aims and mission match perfectly with those of CCAT, and the Board of Trustees supported the proposals to merge. The due diligence and legal processes were undertaken and as a result the three CCAT primary schools will transfer to NCLT on 1st January 2023.

CCAT, as a company limited by guarantee and an exempt charity, continued in existence in order to prepare final annual accounts and financial statements for the period from 1st September 2022 to its shortened accounting period end 31st May 2023, which included the operating activities of the schools from 1st September 2022 to the date of transfer to NCLT, 1st January 2023. Once all legislative and regulatory duties have been completed, CCAT will be dissolved.

Creative Children's Academy Trust

**Report of the Trustees
for the Period 1 September 2022 to 31 May 2023**

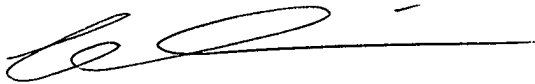
AUDITORS

Insofar as the trustees are aware:

- There is no relevant audit information of which the charitable company's auditor is unaware.
- The Trustees have taken all steps that they ought to have taken to make themselves aware of any relevant audit information and to establish that the auditor is aware of that information.

The Board of Trustees has considered the professional services of its appointed Auditor, Harris & Co, and recommends re-appointment.

The trustees' report, incorporating a strategic report, was approved by order of the Board of Trustees, as the company directors, on 20th September 2023 and signed on the Board's behalf by:



.....
Mr Craig Cannings
Vice-Chair of the Board of Trustees

Creative Children's Academy Trust
Governance Statement
for the Period 1 September 2022 to 31 May 2023

Scope of Responsibility

As Trustees, we acknowledge we have overall responsibility for ensuring that the Creative Children's Academy Trust has an effective and appropriate system of control, financial and otherwise. However, such a system is designed to manage rather than eliminate the risk of failure to achieve business objectives, and can provide only reasonable and not absolute assurance against material misstatement or loss.

We have reviewed and taken account of the guidance in DfE's Governance Handbook and competency framework for governance. We also receive, on an annual basis, a copy of the Academy Trust Handbook. Any changes in the Handbook are explained to us as part of the External Accountants presentation of the draft Annual Audit Plan received in September of each academic year.

The Board of Trustees has delegated the day-to-day responsibility to the Chief Executive Officer (CEO), as Accounting Officer (AO), for ensuring financial controls conform with the requirements of both propriety and good financial management and in accordance with the requirements and responsibilities assigned to it in the funding agreement between the Creative Children's Academy Trust and the Secretary of State for Education. As AO, the CEO is also responsible for reporting to the Board of Trustees any material weaknesses or breakdowns in internal control.

CCAT's model of governance includes a local Governing Board in each school. The levels of authority delegated to both the Governing Board and the Head Teacher of Trust schools are set out in a published Scheme of Delegation.

Governance

The information on governance included here supplements that described in the Trustees' Report and in the Statement of Trustees' Responsibilities. In addition to its Annual General Meeting, the Board of Trustees has formally met 4 times during the period from 1st September 2022 to 31st December 2022. Attendance was as follows:

Board of Trustees	Meetings attended	Out of a possible
Trustee		
J Armstrong	1	4
C Cannings (Vice-Chair)	4	4
W Ryan	4	4
A Sandhal	-	4
T Toms (Chief Executive Officer and Accounting Officer)	4	4
S Walker (Chair)	2	4
M Ward	3	4

The Board of Trustees elected not to delegate finance to a sub-committee of the Board. During operation as a multi-academy trust, the consolidation and monitoring of the Trust's activities and finance continued to be considered a business-critical activity. The Board had, amongst its Trustees, a qualified and experienced Accountant, who serves as Lead Trustee for Finance. The arrangement continues to work well in a small Board setting such as CCAT's.

Creative Children's Academy Trust
Governance Statement
for the Period 1 September 2022 to 31 May 2023

The Audit and Risk Committee (ARC) is a sub-committee of the main Board. The Committee did not meet separately during the period 1st September 2022 to 31st December 2022. Although ARC has delegated responsibility on behalf of the Board for agreeing the annual programme of Internal Scrutiny in Trust schools and the scrutiny and management of Risk, matters were dealt with at Trust Board meetings during that time.

Audit and Risk Committee	Meetings attended	Out of a possible
Trustees		
C Cannings (Chair)	0	0
A Sandhal	0	0
S Walker	0	0

The attendance of Trustees was reviewed during the period of the report. The Trust Executive is aware that some Trustees have their own work commitments and priorities which mean they could not attend Board meetings on occasion. The Board accepted that this is something that cannot be avoided when working professionals are part of the team. The value those individuals brought to the group dynamic is beyond question. The Trust also used other methods of managing exchanges of information including *correspondence and the use of online virtual meeting platforms*.

There have been no changes to the composition of the Board during the reporting period.

Due to the plans for the Trust's schools to transfer to the New Collaborative Learning Trust (NCLT) in the new year, following the preparation and filing of final Accounts, the Trust as a limited company will be dissolved during 2023.

Review of Value for Money

As Accounting Officer, the Chief Executive Officer has responsibility for ensuring that the academy trust delivers good value in the use of public resources. The Accounting Officer understands that value for money refers to the educational and wider societal outcomes achieved in return for the taxpayer resources received.

CCAT's Accounting Officer has worked with members of the Trust Executive to continuously review value for money during the reporting period by:

- Utilising the independent professional expertise of Trustees to assess and inform reviews of school improvement strategies.
- Continuing to develop its curriculum Focus groups as part of the Trust's continuous improvement strategy.
- Negotiating new contracts for key services in our schools covering Premises and property management, Health and Safety and Data management. These contracts are delivering a wider range of services, including training and development, at no extra cost to the Trust.

Creative Children's Academy Trust

Governance Statement for the Period 1 September 2022 to 31 May 2023

The Purpose of the System of Internal Control

The system of internal control is designed to manage risk to a reasonable level rather than to eliminate all risk of failure to achieve policies, aims and objectives. It can, therefore, only provide reasonable and not absolute assurance of effectiveness. The system of internal control is based on an on-going process designed to identify and prioritise the risks to the achievement of academy trust policies, aims and objectives, to evaluate the likelihood of those risks being realised and the impact should they be realised, and to manage them efficiently, effectively and economically. The system of internal control has been in place in CCAT for the period 1st September 2022 to 31 December 2022.

Capacity to Handle Risk

The Board of Trustees reviewed the key risks to which the academy trust is exposed, together with the operating, financial and compliance controls that have been implemented to mitigate those risks. The Board of Trustees is of the view that there was a formal on-going process for identifying, evaluating and managing CCAT's significant risks that has been in place for the period 1st September 2022 to 31 December 2022 and up to the date of approval of the report and financial statements. This process was managed by the Trust Audit and Risk Committee and reviewed by the Board of Trustees.

The Risk and Control Framework

CCAT's system of internal financial control is based on a framework of regular management information and administrative procedures including the segregation of duties and a system of delegation and accountability.

The framework includes:

- Comprehensive budgeting and monitoring systems with an annual budget and periodic financial reports which are reviewed and agreed by the Board of Trustees.
- The detailed review of budget reports by the Chair of Trustees and the Lead Trustee for Finance.
- An annually reviewed Scheme of Delegation.
- A revised policy for budget management at local level.
- The identification and management of risks.

CCAT bought in its internal audit service from Rotherham Metropolitan Borough Council (RMBC).

Creative Children's Academy Trust

Governance Statement for the Period 1 September 2022 to 31 May 2023

Review of Effectiveness

As Accounting Officer, the Trust's Chief Executive Officer has responsibility for reviewing the effectiveness of the system of internal control. During the year in question the review has been informed by:

- The work of the internal auditor (external provision under service level agreement by Rotherham Metropolitan Borough Council)
- The work of the external auditor, Harris & Co
- The work school resource management self-assessment tool
- The work of the executive managers within the academy trust who have responsibility for the development and maintenance of the internal control framework

In view of the planned merger of the Trust, the internal audit scrutiny programme for CCAT schools in 2022-23 was managed by NCLT as the incoming Trust from 1 January 2023.

Approved by order of the members of the board of trustees on 20th September 2023 and signed on its behalf by:



Mr Craig Cannings
Vice-Chair of the Board of Trustees



Mrs Trudi Toms
Trust Accounting Officer

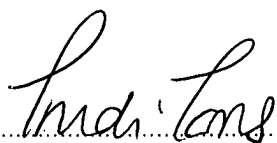
Creative Children's Academy Trust

**Statement on Regularity, Propriety and Compliance
for the Period 1 September 2022 to 31 May 2023**

As accounting officer of Creative Children's Academy Trust I have considered my responsibility to notify the charitable company board of trustees and the Education and Skills Funding Agency (ESFA) of material irregularity, impropriety and non-compliance with terms and conditions of all funding received by the charitable company, under the funding agreement in place between the charitable company and the Secretary of State for Education. As part of my consideration I have had due regard to the requirements of the Academy Trust Handbook 2021.

I confirm that I and the charitable company board of trustees are able to identify any material irregular or improper use of funds by the charitable company, or material non-compliance with the terms and conditions of funding under the charitable company's funding agreement and the Academy Trust Handbook 2021.

I confirm that no instances of material irregularity, impropriety or funding non-compliance have been discovered to date. If any instances are identified after the date of this statement, these will be notified to the board of trustees and ESFA.



Mrs Trudi Toms
Trust Accounting Officer

20th September 2023

Creative Children's Academy Trust

Statement of Trustees' Responsibilities for the Period 1 September 2022 to 31 May 2023

The trustees (who are also the directors of the charitable company for the purposes of company law) are responsible for preparing the Trustees' Report and the financial statements in accordance with the Academies Accounts Direction published by the Education and Skills Funding Agency (ESFA), United Kingdom Accounting Standards (United Kingdom Generally Accepted Accounting Practice) and applicable law and regulations.

Company law requires the trustees to prepare financial statements for each financial year. Under company law, the trustees must not approve the financial statements unless they are satisfied that they give a true and fair view of the state of affairs of the charitable company and of its incoming resources and application of resources, including its income and expenditure, for that period.

In preparing these financial statements, the trustees are required to:

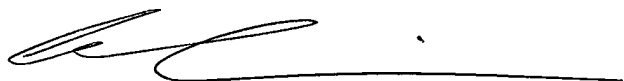
- select suitable accounting policies and then apply them consistently;
- observe the methods and principles in the Charities SORP 2019 and the Academies Accounts Direction 2021 to 2022 and its Supplementary Bulletin;
- make judgments and accounting estimates that are reasonable and prudent;
- state whether applicable UK Accounting Standards (FRS 102) have been followed, subject to any material departures disclosed and explained in the financial statements;
- prepare the financial statements on the going concern basis unless it is inappropriate to presume that the charitable company will continue in business.

The trustees are responsible for keeping adequate accounting records that are sufficient to show and explain the charitable company's transactions and disclose with reasonable accuracy at any time the financial position of the charitable company and enable them to ensure that the financial statements comply with the Companies Act 2006. They are also responsible for safeguarding the assets of the charitable company and hence for taking reasonable steps for the prevention and detection of fraud and other irregularities.

The trustees are responsible for ensuring that in its conduct and operation the charitable company applies financial and other controls, which conform with the requirements both of propriety and of good financial management. They are also responsible for ensuring grants received from ESFA/Department for Education (DfE) have been applied for the purposes intended.

The trustees are responsible for the maintenance and integrity of the corporate and financial information included on the charitable company's website. Legislation in the United Kingdom governing the preparation and dissemination of financial statements may differ from legislation in other jurisdictions.

Approved by order of the members of the board of trustees on 20th September 2023 and signed on its behalf by:



Mr Craig Cannings
Vice-Chair of the Board of Trustees

Report of the Independent Auditors to the Members of Creative Children's Academy Trust

Opinion

We have audited the financial statements of Creative Children's Academy Trust (the 'charitable company') for the period ended 31 May 2023 which comprise the Statement of Financial Activities, the Balance Sheet, the Cash Flow Statement and notes to the financial statements, including a summary of significant accounting policies. The financial reporting framework that has been applied in their preparation is applicable law, United Kingdom Accounting Standards (United Kingdom Generally Accepted Accounting Practice) and the Accounts Direction 2022 to 2023 issued by the Education and Skills Funding Agency (ESFA).

In our opinion the financial statements:

- give a true and fair view of the state of the charitable company's affairs as at 31 May 2023 and of its incoming resources and application of resources, including its income and expenditure, for the period then ended;
- have been properly prepared in accordance with United Kingdom Generally Accepted Accounting Practice;
- have been prepared in accordance with the requirements of the Companies Act 2006; and
- have been prepared in accordance with the Charities SORP 2019 and Academies Accounts Direction 2022 to 2023.

Basis for opinion

We conducted our audit in accordance with International Standards on Auditing (UK) (ISAs (UK)) and applicable law. Our responsibilities under those standards are further described in the Auditors' responsibilities for the audit of the financial statements section of our report. We are independent of the charitable company in accordance with the ethical requirements that are relevant to our audit of the financial statements in the UK, including the FRC's Ethical Standard, and we have fulfilled our other ethical responsibilities in accordance with these requirements. We believe that the audit evidence we have obtained is sufficient and appropriate to provide a basis for our opinion.

Emphasis of matter – financial statements prepared on a basis other than going concern

We draw attention to note 1 on page 24 to the financial statements which explains that the Academy Trust ceased to operate on 1 January 2023 due to the transfer of all three academies to another Multi Academy Trust. Therefore, the trustees do not consider it to be appropriate to adopt the going concern basis of accounting in preparing the financial statements. Accordingly, the financial statements have been prepared on a basis other than going concern as described in note 1 on page 24. Our opinion is not modified in respect of this matter.

Other information

The trustees are responsible for the other information. The other information comprises the information included in the Annual Report, other than the financial statements and our Report of the Independent Auditors thereon.

Our opinion on the financial statements does not cover the other information and, except to the extent otherwise explicitly stated in our report, we do not express any form of assurance conclusion thereon.

In connection with our audit of the financial statements, our responsibility is to read the other information and, in doing so, consider whether the other information is materially inconsistent with the financial statements or our knowledge obtained in the audit or otherwise appears to be materially misstated. If we identify such material inconsistencies or apparent material misstatements, we are required to determine whether this gives rise to a material misstatement in the financial statements themselves. If, based on the work we have performed, we conclude that there is a material misstatement of this other information, we are required to report that fact. We have nothing to report in this regard.

Opinions on other matters prescribed by the Companies Act 2006

In our opinion, based on the work undertaken in the course of the audit:

- the information given in the Report of the Trustees for the financial year for which the financial statements are prepared is consistent with the financial statements; and
- the Report of the Trustees has been prepared in accordance with applicable legal requirements.

Report of the Independent Auditors to the Members of Creative Children's Academy Trust

Matters on which we are required to report by exception

In the light of the knowledge and understanding of the charitable company and its environment obtained in the course of the audit, we have not identified material misstatements in the Report of the Trustees.

We have nothing to report in respect of the following matters where the Companies Act 2006 requires us to report to you if, in our opinion:

- adequate accounting records have not been kept or returns adequate for our audit have not been received from branches not visited by us; or
- the financial statements are not in agreement with the accounting records and returns; or
- certain disclosures of trustees' remuneration specified by law are not made; or
- we have not received all the information and explanations we require for our audit.

Responsibilities of trustees

As explained more fully in the Statement of Trustees' Responsibilities, the trustees (who are also the directors of the charitable company for the purposes of company law) are responsible for the preparation of the financial statements and for being satisfied that they give a true and fair view, and for such internal control as the trustees determine is necessary to enable the preparation of financial statements that are free from material misstatement, whether due to fraud or error.

In preparing the financial statements, the trustees are responsible for assessing the charitable company's ability to continue as a going concern, disclosing, as applicable, matters related to going concern and using the going concern basis of accounting unless the trustees either intend to liquidate the charitable company or to cease operations, or have no realistic alternative but to do so.

Our responsibilities for the audit of the financial statements

Our objectives are to obtain reasonable assurance about whether the financial statements as a whole are free from material misstatement, whether due to fraud or error, and to issue a Report of the Independent Auditors that includes our opinion. Reasonable assurance is a high level of assurance, but is not a guarantee that an audit conducted in accordance with ISAs (UK) will always detect a material misstatement when it exists. Misstatements can arise from fraud or error and are considered material if, individually or in the aggregate, they could reasonably be expected to influence the economic decisions of users taken on the basis of these financial statements.

Irregularities, including fraud, are instances of non-compliance with laws and regulations. We design procedures in line with our responsibilities, outlined above, to detect material misstatements in respect of irregularities, including fraud. The extent to which our procedures are capable of detecting irregularities, including fraud is detailed below:

Identifying and assessing potential risks related to irregularities

In identifying and assessing risks of material misstatement in respect of irregularities, including fraud and non-compliance with laws and regulations, our procedures included the following:

- Enquiring of management, including obtaining and reviewing supporting documentation, concerning the company's policies and procedures relating to:
- Identifying, evaluating and complying with laws and regulations and whether they were aware of any instances of non-compliance;
- Detecting and responding to the risks of fraud and whether they have knowledge of any actual, suspected or alleged fraud;
- The internal controls established to mitigate risk related to fraud or non-compliance with laws & regulations;
- Obtaining an understanding of the legal and regulatory frameworks that the company operates in, focusing on those laws and regulations that had a direct effect on the financial statements or that had a fundamental effect on the operations of the charitable company. The key laws and regulations we considered in this context included the UK Companies Act, Charities SORP (FRS102), UK Generally Accepted Accounting Practice and the Education and Skills Funding Agency's (ESFA) Academy Trust Handbook and Accounts Direction.

A further description of our responsibilities for the audit of the financial statements is located on the Financial Reporting Council's website at www.frc.org.uk/auditorsresponsibilities. This description forms part of our Report of the Independent Auditors.

**Report of the Independent Auditors to the Members of
Creative Children's Academy Trust**

Audit response to risks identified

Our procedures to respond to risks identified included the following:

- Reviewing the financial statement disclosures and testing to supporting documentation to assess compliance with relevant laws and regulations;
- Enquiring of management and those charged with governance concerning actual and potential litigation and claims;
- Performing analytical procedures to identify any unusual or unexpected relationships that may indicate risk of material misstatement due to fraud; and
- In addressing the risk of fraud through management override of controls, testing the appropriateness of journal entries and other adjustments; assessing the judgements used in accounting estimates to assess whether these may be indicative of potential bias; and evaluating the business rationale of any significant transactions that are unusual or outside the normal course of business.

Because of the inherent limitations of an audit, there is a risk that we will not detect all irregularities, including those leading to a material misstatement in the financial statements or non-compliance with regulation. This risk increases the more that compliance with a law or regulation is removed from the events and transactions reflected in the financial statements, as we will be less likely to become aware of instances of non-compliance. The risk is also greater regarding irregularities occurring due to fraud rather than error, as fraud involves intentional concealment, forgery, collusion, omission or misrepresentation.

Use of our report

This report is made solely to the charitable company's members, as a body, in accordance with Chapter 3 of Part 16 of the Companies Act 2006. Our audit work has been undertaken so that we might state to the charitable company's members those matters we are required to state to them in an auditors' report and for no other purpose. To the fullest extent permitted by law, we do not accept or assume responsibility to anyone other than the charitable company and the charitable company's members as a body, for our audit work, for this report, or for the opinions we have formed.

Ian Bragger

Ian Bragger FCA (Senior Statutory Auditor)
for and on behalf of Harris & Co Limited
Chartered Accountants & Statutory Auditor
Marland House
13 Huddersfield Road
Barnsley
South Yorkshire
S70 2LW

Date: 21 September 2023

Independent Reporting Accountant's Assurance Report on Regularity to Creative Children's Academy Trust and the Education and Skills Funding Agency

In accordance with the terms of our engagement and further to the requirements of the Education and Skills Funding Agency (ESFA), as included in the Academies Accounts Direction 2022 to 2023, we have carried out an engagement to obtain limited assurance about whether the expenditure disbursed and income received by Creative Children's Academy Trust during the period 1 September 2022 to 31 May 2023 have been applied to the purposes identified by Parliament and the financial transactions conform to the authorities which govern them.

This report is made solely to Creative Children's Academy Trust and the ESFA in accordance with the terms of our engagement letter. Our work has been undertaken so that we might state to Creative Children's Academy Trust and the ESFA those matters we are required to state in a report and for no other purpose. To the fullest extent permitted by law, we do not accept or assume responsibility to anyone other than Creative Children's Academy Trust and the ESFA, for our work, for this report, or for the conclusion we have formed.

Respective responsibilities of Creative Children's Academy Trust's accounting officer and the reporting accountant

The accounting officer is responsible, under the requirements of Creative Children's Academy Trust's funding agreement with the Secretary of State for Education dated 30 October 2014 and the Academy Trust Handbook, extant from 1 September 2022, for ensuring that expenditure disbursed and income received is applied for the purposes intended by Parliament and the financial transactions conform to the authorities which govern them.

Our responsibilities for this engagement are established in the United Kingdom by our profession's ethical guidance and are to obtain limited assurance and report in accordance with our engagement letter and the requirements of the Academies Accounts Direction 2022 to 2023. We report to you whether anything has come to our attention in carrying out our work which suggests that in all material respects, expenditure disbursed and income received during the period 1 September 2022 to 31 May 2023 have not been applied to purposes intended by Parliament or that the financial transactions do not conform to the authorities which govern them.

Approach

We conducted our engagement in accordance with the Academies Accounts Direction 2022 to 2023 issued by the ESFA. We performed a limited assurance engagement as defined in our engagement letter.

The objective of a limited assurance engagement is to perform such procedures as to obtain information and explanations in order to provide us with sufficient appropriate evidence to express a negative conclusion on regularity.

A limited assurance engagement is more limited in scope than a reasonable assurance engagement and consequently does not enable us to obtain assurance that we would become aware of all significant matters that might be identified in a reasonable assurance engagement. Accordingly, we do not express a positive opinion.

Our engagement includes examination, on a test basis, of evidence relevant to the regularity and propriety of the charitable company's income and expenditure.

The work undertaken to draw our conclusion includes:

- consideration of the evidence supporting the accounting officer's statement on regularity, propriety and compliance;
- evaluation of the general control environment of the Academy Trust;
- assessment and testing of a sample of the specific control activities over regularity of a particular activity;
- consideration of whether the activity is permissible within the Academy Trust's framework of authorities.
- consideration of matters raised by the academy trust's internal auditors.

**Independent Reporting Accountant's Assurance Report on Regularity to
Creative Children's Academy Trust and the Education and Skills Funding Agency**

Conclusion

In the course of our work, nothing has come to our attention which suggests that in all material respects the expenditure disbursed and income received during the period 1 September 2022 to 31 May 2023 has not been applied to purposes intended by Parliament and the financial transactions do not conform to the authorities which govern them.

Harris & Co

Harris & Co Limited
Chartered Accountants
Reporting Accountant
Marland House
13 Huddersfield Road
Barnsley
South Yorkshire
S70 2LW

Date: *21 September 2023*

Creative Children's Academy Trust

**Statement of Financial Activities
for the Period 1 September 2022 to 31 May 2023**

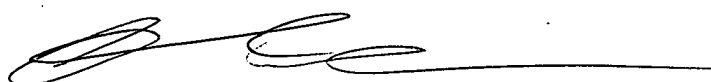
					Period 1/9/22 to 31/5/23	Year Ended 31/8/22
	Notes	Unrestricted fund £	Restricted funds £	Restricted Fixed Asset £	Total funds £	Total funds £
INCOME AND ENDOWMENTS FROM						
Donations and capital grants	2	23,179	-	41,588	64,767	50,396
Charitable activities						
Funding for the academy's educational operations	3	-	2,004,652	-	2,004,652	5,925,008
Other trading activities	4	146,840	-	-	146,840	421,763
Investment income	5	49	-	-	49	115
Total		<u>170,068</u>	<u>2,004,652</u>	<u>41,588</u>	<u>2,216,308</u>	<u>6,397,282</u>
EXPENDITURE ON						
Charitable activities						
Academy's educational operations	7	225,980	2,204,414	88,643	2,519,037	7,038,609
Transfer out on academies leaving the Trust	23	278,434	581,020	6,726,405	7,585,859	-
Total		<u>504,414</u>	<u>2,785,434</u>	<u>6,815,048</u>	<u>10,104,896</u>	<u>7,038,609</u>
NET INCOME/(EXPENDITURE)		(334,346)	(780,782)	(6,773,460)	(7,888,588)	(641,327)
Other recognised gains/(losses)						
Actuarial gains on defined benefit schemes		-	433,000	-	433,000	4,047,000
Net movement in funds		(334,346)	(347,782)	(6,773,460)	(7,455,588)	3,405,673
RECONCILIATION OF FUNDS						
Total funds brought forward		334,346	347,782	6,773,460	7,455,588	4,049,915
TOTAL FUNDS CARRIED FORWARD		<u>-</u>	<u>-</u>	<u>-</u>	<u>-</u>	<u>7,455,588</u>

The notes form part of these financial statements

Balance Sheet
31 May 2023

	Notes	2023 £	2022 £
FIXED ASSETS			
Tangible assets	13	-	6,733,306
CURRENT ASSETS			
Stocks	14	-	2,114
Debtors	15	-	273,521
Cash at bank		535,337	915,337
		535,337	1,190,972
CREDITORS			
Amounts falling due within one year	16	(535,337)	(415,554)
NET CURRENT ASSETS		-	775,418
TOTAL ASSETS LESS CURRENT LIABILITIES		-	7,508,724
CREDITORS			
Amounts falling due after more than one year	17	-	(5,136)
PENSION LIABILITY	20	-	(48,000)
NET ASSETS		-	7,455,588
FUNDS	19		
Restricted funds:			
Restricted General		-	395,782
Restricted Fixed Asset		-	6,773,460
Restricted - Pension		-	(48,000)
		-	7,121,242
Unrestricted funds:			
General fund		-	334,346
TOTAL FUNDS		-	7,455,588

The financial statements were approved by the Board of Trustees and authorised for issue on 20th September 2023 and were signed on its behalf by:



.....
Mr Craig Cannings
Vice-Chair of the Board of Trustees

The notes form part of these financial statements

Creative Children's Academy Trust

**Cash Flow Statement
for the Period 1 September 2022 to 31 May 2023**

	Notes	Period 1/9/22 to 31/5/23 £	Year Ended 31/8/22 £
Cash flows from operating activities			
Cash generated from operations	1	<u>(409,932)</u>	<u>118,994</u>
Net cash (used in)/provided by operating activities		<u>(409,932)</u>	<u>118,994</u>
 Cash flows from investing activities			
Purchase of tangible fixed assets		(11,705)	(42,457)
Capital grants from DfE/EFA		41,588	25,413
Interest received		<u>49</u>	<u>115</u>
Net cash provided by/(used in) investing activities		<u>29,932</u>	<u>(16,929)</u>
 Change in cash and cash equivalents in the reporting period		 (380,000)	 102,065
Cash and cash equivalents at the beginning of the reporting period		<u>915,337</u>	<u>813,272</u>
 Cash and cash equivalents at the end of the reporting period		<u><u>535,337</u></u>	<u><u>915,337</u></u>

The notes form part of these financial statements

Creative Children's Academy Trust

**Notes to the Cash Flow Statement
for the Period 1 September 2022 to 31 May 2023**

1. RECONCILIATION OF NET EXPENDITURE TO NET CASH FLOW FROM OPERATING ACTIVITIES

	Period 1/9/22 to 31/5/23 £	Year Ended 31/8/22 £
Net expenditure for the reporting period (as per the Statement of Financial Activities)	(7,888,588)	(641,327)
Adjustments for:		
Depreciation charges	81,052	236,439
Capital grants from DfE/ESFA	(41,588)	(25,413)
Interest received	(49)	(115)
Transfer out on academies leaving Trust	7,026,959	-
Decrease in stocks	2,114	75
Decrease/(increase) in debtors	273,521	(43,680)
Increase in creditors	114,647	31,015
Difference between pension charge and cash contributions	<u>22,000</u>	<u>562,000</u>
Net cash (used in)/provided by operations	<u>(409,932)</u>	<u>118,994</u>

2. ANALYSIS OF CHANGES IN NET FUNDS

	At 1/9/22 £	Cash flow £	At 31/5/23 £
Net cash			
Cash at bank	<u>915,337</u>	<u>(380,000)</u>	<u>535,337</u>
	<u>915,337</u>	<u>(380,000)</u>	<u>535,337</u>
Total	<u>915,337</u>	<u>(380,000)</u>	<u>535,337</u>

Creative Children's Academy Trust

Notes to the Financial Statements for the Period 1 September 2022 to 31 May 2023

1. ACCOUNTING POLICIES

Basis of preparing the financial statements

A summary of the principal accounting policies adopted (which has been applied consistently, except where noted), judgements and key sources of estimation uncertainty, is set out below.

Basis of preparing the financial statements

The financial statements of the academy trust, which is a public benefit entity under FRS 102, have been prepared under the historical cost convention in accordance with the Financial Reporting Standard Applicable in the UK and Republic of Ireland (FRS 102), the Accounting and Reporting by Charities: Statement of Recommended Practice applicable to charities preparing their accounts in accordance with the Financial Reporting Standard applicable in the UK and Republic of Ireland (FRS 102) (Charities SORP (FRS 102)), the Academies Accounts Direction 2021 to 2022 issued by ESFA, the Charities Act 2011 and the Companies Act 2006.

Going concern

As the Academy Trust ceased to operate on 1 January 2023 due to the transfer of all three academies to another Multi Academy Trust, the financial statements have been prepared on a basis other than going concern. No material adjustments were required as a result of ceasing to apply the going concern basis.

Critical accounting judgements and key sources of estimation uncertainty

Estimates and judgments are continually evaluated and are based on historical experience and other factors, including expectations of future events that are believed to be reasonable under the circumstances.

Critical accounting estimates and assumptions:

The academy trust makes estimates and assumptions concerning the future. The resulting accounting estimates and assumptions will, by definition, seldom equal the related actual results. The estimates and assumptions that have a significant risk of causing a material adjustment to the carrying amounts of assets and liabilities within the next financial year are discussed below.

The present value of the Local Government Pension Scheme defined benefit liability depends on a number of factors that are determined on an actuarial basis using a variety of assumptions. The assumptions used in determining the net cost (income) for pensions include the discount rate. Any changes in these assumptions, which are disclosed in the notes to the accounts, will impact the carrying amount of the pension liability. Furthermore, a roll forward approach which projects results from the latest full actuarial valuation performed at 31 March 2016 has been used by the actuary in valuing the pensions liability at 31 December 2022 (the date that academy schools transferred out of the Trust to a New Multi Academy Trust). Any differences between the figures derived from the roll forward approach and a full actuarial valuation would impact on the carrying amount of the pension liability.

Capital grants, including those from the Condition Improvement Fund, are recognised in full when there is an unconditional entitlement to the grant. Unspent amounts of capital grants are reflected in the balance sheet in the restricted fixed asset fund. Capital grants are recognised on a receivable basis and upon entitlement, and not deferred over the life of the asset on which they are expended. Where entitlement occurs before income is received, the income is accrued.

Creative Children's Academy Trust

Notes to the Financial Statements - continued for the Period 1 September 2022 to 31 May 2023

1. ACCOUNTING POLICIES - continued

Critical accounting judgements and key sources of estimation uncertainty

Expenditure incurred from capital grant income is recognised either through the Statement of Financial Activities or capitalised on the Balance Sheet, depending on its nature. Expenditure is capitalised where the expenditure provides incremental economic benefits to the entity. Where the expenditure is in respect of repairs and maintenance, or an asset which may have to be replaced at regular intervals, expenditure is written off through the Statement of Financial Activities.

Income

All income is recognised once the academy has entitlement to the income, it is probable that the income will be received and the amount of income receivable can be measured reliably.

Grants are included in the Statement of financial activities incorporating income and expenditure account on a receivable basis. The balance of income received for specific purposes but not expended during the period is shown in the relevant funds on the Balance sheet. Where income is received in advance of entitlement of receipt, its recognition is deferred and included in creditors as deferred income. Where entitlement occurs before income is received, the income is accrued.

General Annual Grant is recognised in full in the Statement of financial activities incorporating income and expenditure account in the year for which it is receivable and any abatement in respect of the period is deducted from income and recognised as a liability.

Capital grants are recognised when there is entitlement and are not deferred over the life of the asset on which they are expended. Unspent amounts of capital grant are reflected in the balance in the restricted fixed asset fund.

Sponsorship income provided to the academy which amounts to a donation is recognised in the Statement of financial activities incorporating income and expenditure account in the period in which it is receivable, where receipt is probable and it is measurable.

Donations are recognised on a receivable basis where receipt is probable and the amount can be reliably measured.

Other income, including the hire of facilities, is recognised in the period in which it is receivable and to the extent the goods have been provided or on completion of the service.

Interest receivable

Interest on funds held on deposit is included when receivable and the amount can be measured reliably by the Academy Trust; this is normally upon notification of the interest paid or payable by the bank.

Expenditure

Expenditure is recognised once there is a legal or constructive obligation to transfer economic benefit to a third party, it is probable that a transfer of economic benefits will be required in settlement and the amount of the obligation can be measured reliably. Expenditure is classified by activity. The costs of each activity are made up of the total of direct costs and shared costs, including support costs involved in undertaking each activity. Direct costs attributable to a single activity are allocated directly to that activity. Shared costs which contribute to more than one activity and support costs which are not attributable to a single activity are apportioned between those activities on a basis consistent with the use of resources. Central staff costs are allocated on the basis of time spent, and depreciation charges allocated on the portion of the asset's use.

Expenditure on raising funds includes all expenditure incurred by the Academy Trust to raise funds for its charitable purposes and includes costs of all fundraising activities events and non-charitable trading.

Expenditure on charitable activities are costs incurred on the Academy Trust's educational operations, including support costs and those costs relating to the governance of the Academy Trust appointed to charitable activities.

Creative Children's Academy Trust

Notes to the Financial Statements - continued for the Period 1 September 2022 to 31 May 2023

1. ACCOUNTING POLICIES - continued

Expenditure

All expenditure is inclusive of irrecoverable VAT.

Where assets and liabilities in respect of an existing academy are transferred out of the trust, the transferred assets and liabilities are derecognised from the balance sheet at the point when the risks and rewards of ownership pass from the trust, which is on signing of the transfer agreement with the trust to which the academy is transferring. An equal amount of expenditure is recognised for the transfer of an existing academy out of the trust as the transfer is for £nil consideration..

Tangible fixed assets

Depreciation is provided at the following annual rates in order to write off the cost less estimated residual value of each asset over its estimated useful life.

Leasehold land and buildings	- Straight line over 50 years
Furniture and equipment	- Straight line over 10 years
Computer equipment	- Straight line over 5 years

Depreciation is not charged on freehold land. Assets inherited on conversion (other than land and buildings) are depreciated over their estimated remaining useful life, as at the date of conversion.

All assets costing more than £1,000 are capitalised and are carried at cost, net of depreciation and any provision for impairment.

Where tangible fixed assets have been acquired with the aid of specific grants, either from the government or from the private sector, they are included in the Balance sheet at cost and depreciated over their expected useful economic life. Where there are specific conditions attached to the funding requiring the continued use of the asset, the related grants are credited to a restricted fixed asset fund in the Statement of financial activities incorporating income and expenditure account and carried forward in the Balance sheet.

Depreciation on the relevant assets is charged directly to the restricted fixed asset fund in the Statement of financial activities incorporating income and expenditure account. Where tangible fixed assets have been acquired with unrestricted funds, depreciation on such assets is charged to the unrestricted fund.

A review for impairment of a fixed asset is carried out if events or changes in circumstances indicate that the carrying value of any fixed asset may not be recoverable. Shortfalls between the carrying value of fixed assets and their recoverable amounts are recognised as impairments. Impairment losses are recognised in the Statement of financial activities incorporating income and expenditure account.

Financial instruments

The academy only holds basic financial instruments as defined in FRS 102. The financial assets and financial liabilities of the academy and their measurement basis are as follows:

Financial assets - trade and other debtors are basic financial instruments and are debt instruments measured at amortised cost as detailed in the notes to the accounts. Prepayments are not financial instruments.

Financial liabilities - trade creditors, accruals and other creditors are financial instruments, and are measured at amortised costs as detailed in the notes to the accounts. Taxation and social security are not included in the financial instruments disclosure definition. Deferred income is not deemed to be a financial liability, as the cash settlement has already taken place and there is an obligation to deliver services rather than cash or another financial instrument.

Creative Children's Academy Trust

Notes to the Financial Statements - continued for the Period 1 September 2022 to 31 May 2023

1. ACCOUNTING POLICIES - continued

Stocks

Stocks are valued at the lower of cost and net realisable value after making due allowance for obsolete and slow-moving stocks. Cost includes all direct costs and an appropriate proportion of fixed and variable overheads.

Taxation

The academy is considered to pass the tests set out in Paragraph 1 Schedule 6 of the Finance Act 2010 and therefore it meets the definition of a charitable company for UK corporation tax purposes. Accordingly, the academy is potentially exempt from taxation in respect of income or capital gains received within categories covered by Chapter 3 Part 11 of the Corporation Tax Act 2010 or Section 256 of the Taxation of Chargeable Gains Act 1992, to the extent that such income or gains are applied exclusively to charitable purposes.

Fund accounting

Unrestricted income funds represent those resources which may be used towards meeting any of the charitable objects of the academy at the discretion of the Trustees.

Restricted fixed asset funds are resources which are to be applied to specific capital purposes imposed by the Department for Education where the asset acquired or created is held for a specific purpose.

Restricted general funds comprise all other restricted funds received with restrictions imposed by the funder and include grants from the Department for Education.

Investment income, gains and losses are allocated to the appropriate fund.

Pension costs and other post-retirement benefits

Retirement benefits to employees of the academy trust are provided by the Teachers' Pension Scheme ("TPS") and the Local Governments Pension Scheme ("LGPS"). These are defined benefit schemes and the assets are held separately from those of the Academy Trust.

The TPS is an unfunded scheme and contributions are calculated so as to spread the cost of pensions over employees' working lives with the academy in such a way that the pension cost is a substantially level percentage of current and future pensionable payroll. The contributions are determined by the Government Actuary on the basis of quadrennial valuations using a prospective unit credit method. TPS is a multi employer scheme with no underlying assets to assign between employers. Consequently, the TPS is therefore treated as a defined contribution scheme for accounting purposes and the contributions recognised in the period to which they relate.

The LGPS is a funded scheme and the assets are held separately from those of the academy trust in separate trustee administered funds. Pension scheme assets are measured at fair value and liabilities are measured on an actuarial basis using the projected unit credit method and discounted at a rate equivalent to the current rate of return on a high quality corporate bond of equivalent term and currency to the liabilities. The actuarial valuations are obtained at least triennially and are updated at each Balance sheet date. The amounts charged to operating surplus are the current service costs and the costs of scheme introductions, benefit changes, settlements and curtailments. They are included as part of staff costs as incurred. Net interest on the net defined benefit liability/asset is also recognised in the Statement of financial activities incorporating income and expenditure account and comprises the interest cost on the defined benefit obligation and interest income on the scheme assets, calculated by multiplying the fair value of the scheme assets at the beginning of the period by the rate used to discount the benefit obligations. The difference between the interest income on the scheme assets and the actual return on the scheme assets is recognised in other recognised gains and losses.

Actuarial gains and losses are recognised immediately in other recognised gains and losses.

Debtors

Trade and other debtors are recognised at the settlement amount after any trade discount offered. Prepayments are valued at the amount prepaid net of any trade discounts due.

Creative Children's Academy Trust

Notes to the Financial Statements - continued for the Period 1 September 2022 to 31 May 2023

1. ACCOUNTING POLICIES - continued

Debtors

Cash at bank and in hand

Cash at bank and in hand includes cash and short term highly liquid investments with a short maturity of three months or less from the date of acquisition or opening of the deposit or similar account.

Liabilities and provisions

Liabilities and provisions are recognised when there is an obligation at the Balance sheet date as a result of a past event, it is probable that a transfer of economic benefit will be required in settlement, and the amount of the settlement can be estimated reliably. Liabilities are recognised at the amount that the academy anticipates it will pay to settle the debt or the amount it has received as advanced payments for the goods or services it must provide. Provisions are measured at the best estimate of the amounts required to settle the obligation. Where the effect of the time value of money is material, the provision is based on the present value of those amounts, discounted at the pre-tax discount rate that reflects the risks specific to the liability. The unwinding of the discount is recognised within interest payable and similar charges.

2. DONATIONS AND CAPITAL GRANTS

			Period 1/9/22 to 31/5/23 Total funds £	Year Ended 31/8/22 Total funds £
	Unrestricted funds £	Restricted funds £		
Donations	23,179	-	23,179	24,983
Grants	-	41,588	41,588	25,413
	<u>23,179</u>	<u>41,588</u>	<u>64,767</u>	<u>50,396</u>

Grants received, included in the above, are as follows:

	Period 1/9/22 to 31/5/23 £	Year Ended 31/8/22 £
Capital grants	<u>41,588</u>	<u>25,413</u>

Creative Children's Academy Trust

Notes to the Financial Statements - continued for the Period 1 September 2022 to 31 May 2023

3. FUNDING FOR THE ACADEMY'S EDUCATIONAL OPERATIONS

			Period 1/9/22 to 31/5/23	Year Ended 31/8/22
	Unrestricted funds £	Restricted funds £	Total funds £	Total funds £
DfE/ESFA grants				
General Annual Grant (GAG)	-	1,575,868	1,575,868	4,596,394
Other ESFA grants	-	3,231	3,231	59,663
Pupil Premium	-	103,935	103,935	294,109
UIFSM	-	42,240	42,240	137,984
PE and Sport Grant	-	19,067	19,067	57,210
Teachers' Pay and Pension	-	11,289	11,289	24,285
Recovery premium, national tutoring and other Covid-19 support	-	65,240	65,240	121,554
	-	1,820,870	1,820,870	5,291,199
Other Government grants				
Early years funding	-	130,802	130,802	440,574
High needs funding	-	51,230	51,230	160,164
Other LA funding	-	1,750	1,750	33,071
	-	183,782	183,782	633,809
	-	2,004,652	2,004,652	5,925,008

There are no unfulfilled conditions at the year end with regards to the amounts included in the above government grants. The other ESFA grant income mainly relates to Universal Free School Meals.

4. OTHER TRADING ACTIVITIES

			Period 1/9/22 to 31/5/23	Year Ended 31/8/22
	Unrestricted funds £	Restricted funds £	Total funds £	Total funds £
Catering	46,754	-	46,754	133,421
Other income	24,127	-	24,127	121,346
Trip income	30,569	-	30,569	61,958
Uniform	891	-	891	5,495
Hire of facilities	1,326	-	1,326	3,737
Breakfast club	43,173	-	43,173	95,806
	146,840	-	146,840	421,763

Creative Children's Academy Trust

**Notes to the Financial Statements - continued
for the Period 1 September 2022 to 31 May 2023**

5. INVESTMENT INCOME

	Unrestricted funds £	Restricted funds £	Period 1/9/22 to 31/5/23 Total funds £	Year Ended 31/8/22 Total funds £
Deposit account interest	<u>49</u>	<u>-</u>	<u>49</u>	<u>115</u>

6. EXPENDITURE

	Non-pay expenditure			Period 1/9/22 to 31/5/23 Total £	Year Ended 31/8/22 Total £
	Staff costs £	Premises £	Other costs £		
Charitable activities					
Academy's educational operations					
Direct costs	1,664,130	-	246,589	1,910,719	5,532,697
Allocated support costs	264,481	112,827	231,010	608,318	1,505,912
Transfer out on academies leaving the Trust	-	-	7,585,859	7,585,859	-
	<u>1,928,611</u>	<u>112,827</u>	<u>8,063,458</u>	<u>10,104,896</u>	<u>7,038,609</u>

Net income/(expenditure) is stated after charging/(crediting):

	Period 1/9/22 to 31/5/23 £	Year Ended 31/8/22 £
Auditors' remuneration	21,000	20,731
Depreciation - owned assets	<u>81,053</u>	<u>236,440</u>

The year ended 31 August 2022 included in the total expenditure of £7,038,609, £380,697 was to unrestricted funds, £228,885 was to restricted fixed asset funds and £6,429,027 was to restricted funds.

7. CHARITABLE ACTIVITIES - ACADEMY'S EDUCATIONAL OPERATIONS

	Unrestricted funds £	Restricted funds £	Period 1/9/22 to 31/5/23 Total funds £	Year Ended 31/8/22 Total funds £
Direct costs	87,796	1,822,923	1,910,719	5,532,697
Support costs	416,618	191,700	608,318	1,505,912
Transfer out on academies leaving the Trust	-	7,585,859	7,585,859	-
	<u>504,414</u>	<u>9,600,482</u>	<u>10,104,896</u>	<u>7,038,609</u>

Creative Children's Academy Trust

**Notes to the Financial Statements - continued
for the Period 1 September 2022 to 31 May 2023**

7. CHARITABLE ACTIVITIES - ACADEMY'S EDUCATIONAL OPERATIONS - continued

	Period 1/9/22 to 31/5/23 Total £	Year Ended 31/8/22 Total £
Analysis of support costs		
Support staff costs	242,960	591,330
Depreciation	4,040	11,817
Technology costs	2,948	11,093
Premises costs	112,827	281,232
Other support costs	191,840	485,770
Governance costs	53,703	124,670
Transfer out on academies leaving the Trust	<u>7,585,859</u>	<u>-</u>
Total support costs	<u>8,194,177</u>	<u>1,505,912</u>

8. STAFF COSTS

	Period 1/9/22 to 31/5/23 £	Year Ended 31/8/22 £
Wages and salaries	1,478,291	3,887,643
Social security costs	135,614	333,490
Operating costs of defined benefit pension schemes	<u>314,706</u>	<u>1,265,993</u>
	<u>1,928,611</u>	<u>5,487,126</u>

The average number of persons employed by the academy trust during the year expressed as full time equivalents:

	Period 1/9/22 to 31/5/23	Year Ended 31/8/22
Teachers and teaching assistants	114	108
Administration and support	21	21
Management	<u>4</u>	<u>4</u>
	<u>139</u>	<u>133</u>

The average number of persons (including senior management team) employed by the charitable company during the period was as follows:

	Period 1/9/22 to 31/5/23	Year Ended 31/8/22
Teachers & teaching assistants	138	137
Support and administrative	47	47
Management	<u>4</u>	<u>4</u>
	<u>189</u>	<u>188</u>

Creative Children's Academy Trust

Notes to the Financial Statements - continued for the Period 1 September 2022 to 31 May 2023

8. STAFF COSTS - continued

The number of employees whose employee benefits (excluding employer pension costs) exceeded £60,000 was:

	Period 1/9/22 to 31/5/23	Year Ended 31/8/22
£60,001 - £70,000	-	2
£90,001 - £100,000	-	1
	<u>-</u>	<u>3</u>

The key management personnel of the Academy trust comprise the trustees and senior leadership team as listed on page 1. The total amount of employee benefits (including employer pension contributions) received by key management personnel for their services to the Academy Trust for the period was £122,091 (2022:2022 £356,729).

9. CENTRAL SERVICES

The Academy Trust has provided the following central services to its academies during the year:

- human resources;
- financial services;
- legal services;
- education support services and strategic guidance; and
- others as arising

The Academy Trust has charged a flat percentage of school budget income of 3% to each school..

The actual amounts charged during the year were as follows:

	Period 1/9/22 to 31 May 23 £	Year Ended 31/8/23 £
Anston Greenlands Primary School	8,871	26,459
Thorpe Hesley Primary School	20,728	60,944
Redscope Primary School	<u>17,677</u>	<u>50,488</u>
Total	<u>47,276</u>	<u>137,891</u>

Creative Children's Academy Trust

Notes to the Financial Statements - continued for the Period 1 September 2022 to 31 May 2023

10. TRUSTEES' REMUNERATION AND EXPENSES

One or more Trustees has been paid remuneration or has received other benefits from an employment with the academy trust. The Principal and other staff Trustees only receive remuneration in respect of services they provide undertaking the roles of principal and other staff members under their contracts of employment, and not in respect of their role as Trustees. The value of Trustees' remuneration and other benefits was as follows:

		Period 1/9/22 to 31/5/23 £'000	Year Ended 31/8/22 £'000
Mrs T Toms	Remuneration	25-30	95-100
	Pension contributions paid	5-10	20-25

11. TRUSTEES' AND OFFICERS' INSURANCE

In accordance with normal commercial practice the academy has purchased insurance to protect trustees and officers from claims arising from negligent acts, errors or omissions occurring whilst on academy business. The insurance provides cover up to £10,000,000 on any one claim. The Trust purchases this insurance via The Department for Education Risk Protection Arrangement Scheme and as such the cost of this insurance is included in the total insurance cost.

12. COMPARATIVES FOR THE STATEMENT OF FINANCIAL ACTIVITIES

	Unrestricted fund £	Restricted funds £	Restricted Fixed Asset £	Total funds £
INCOME AND ENDOWMENTS FROM				
Donations and capital grants	24,983	-	25,413	50,396
Charitable activities				
Funding for the academy's educational operations	-	5,925,008	-	5,925,008
Other trading activities	421,763	-	-	421,763
Investment income	115	-	-	115
Total	<u>446,861</u>	<u>5,925,008</u>	<u>25,413</u>	<u>6,397,282</u>
EXPENDITURE ON				
Charitable activities				
Academy's educational operations	380,697	6,429,027	228,885	7,038,609
Total	<u>380,697</u>	<u>6,429,027</u>	<u>228,885</u>	<u>7,038,609</u>
NET INCOME/(EXPENDITURE)	66,164	(504,019)	(203,472)	(641,327)
Other recognised gains/(losses)				
Actuarial gains on defined benefit schemes	-	4,047,000	-	4,047,000
Net movement in funds	66,164	3,542,981	(203,472)	3,405,673
RECONCILIATION OF FUNDS				
Total funds brought forward	268,182	(3,195,199)	6,976,932	4,049,915
TOTAL FUNDS CARRIED FORWARD	<u>334,346</u>	<u>347,782</u>	<u>6,773,460</u>	<u>7,455,588</u>

Creative Children's Academy Trust

**Notes to the Financial Statements - continued
for the Period 1 September 2022 to 31 May 2023**

13. TANGIBLE FIXED ASSETS

	Leasehold land and buildings £	Furniture and equipment £	Computer equipment £	Totals £
COST				
At 1 September 2022	7,202,301	124,907	126,015	7,453,223
Additions	-	-	11,705	11,705
Disposals	<u>(7,202,301)</u>	<u>(124,907)</u>	<u>(137,720)</u>	<u>(7,464,928)</u>
At 31 May 2023	-	-	-	-
DEPRECIATION				
At 1 September 2022	591,678	54,229	74,010	719,917
Charge for year	66,964	3,899	10,190	81,053
Eliminated on disposal	<u>(658,642)</u>	<u>(58,128)</u>	<u>(84,200)</u>	<u>(800,970)</u>
At 31 May 2023	-	-	-	-
NET BOOK VALUE				
At 31 May 2023	-	-	-	-
At 31 August 2022	<u>6,610,623</u>	<u>70,678</u>	<u>52,005</u>	<u>6,733,306</u>

The disposals relate to the fixed assets transferred out of the Trust on 1 January 2023, following the transfer of Anston Greenlands Primary School, Thorpe Hesley Primary School and Redscope Primary School to another Trust.

14. STOCKS

	2023 £	2022 £
Uniform	-	<u>2,114</u>

15. DEBTORS: AMOUNTS FALLING DUE WITHIN ONE YEAR

	2023 £	2022 £
Trade debtors	-	15,618
VAT	-	122,187
Prepayments and accrued income	-	<u>135,716</u>
	-	<u>273,521</u>

Creative Children's Academy Trust

Notes to the Financial Statements - continued for the Period 1 September 2022 to 31 May 2023

16. CREDITORS: AMOUNTS FALLING DUE WITHIN ONE YEAR

	2023 £	2022 £
Trade creditors	-	115,184
Social security and other taxes	-	73,227
Other creditors	535,337	89,736
Accruals and deferred income	-	137,407
	<u>535,337</u>	<u>415,554</u>

	2023 £	2022 £
Deferred income		
Deferred income as at 1 September 2022	120,398	122,975
Resources deferred during the year	136,303	120,398
Transfer out on academies leaving the Trust	(136,303)	-
Amounts released from previous years	<u>(120,398)</u>	<u>(122,975)</u>
Deferred income as at 31 May 2023	=	<u>120,398</u>

All funds that were received in advance by the Academy Trust were transferred out of the Trust on 1 January 2023 when all its schools were transferred out to another Trust.

The comparative figures included funds that the academy trust was holding, which were received in advance for trips booked for the autumn term 2022 amounting to £10,705. Also included within deferred income is £25,285 devolved formula capital and £84,408 universal infant free school meals. This funding was received in advance in relation to periods post 31 August 2022 and this was either spent during the 4 months to 31 December 2022 or was transferred to the new Trust on transfer.

Other creditors at 31 August 2022 included £1,284 relating to Salix monies due to the ESFA (at 0% interest rate). This liability transferred out of the Trust on 1 January 2023.

17. CREDITORS: AMOUNTS FALLING DUE AFTER MORE THAN ONE YEAR

	2023 £	2022 £
Other creditors	-	<u>5,136</u>

Other creditors falling due after more than one year at 31 August 2022 related to Salix monies due to the ESFA (at 0% interest rate), of which all is due within 5 years. This liability transferred to the new Trust on 1 January 2023.

18. ANALYSIS OF NET ASSETS BETWEEN FUNDS

	Unrestricted fund £	Restricted funds £	Restricted Fixed Asset £	2023 Total funds £
Fixed assets	-	-	-	-
Current assets	-	535,337	-	535,337
Current liabilities	-	(535,337)	-	(535,337)
Long term liabilities	-	-	-	-
Pension liability	-	-	-	-
	<u>-</u>	<u>-</u>	<u>-</u>	<u>-</u>

Creative Children's Academy Trust

**Notes to the Financial Statements - continued
for the Period 1 September 2022 to 31 May 2023**

18. ANALYSIS OF NET ASSETS BETWEEN FUNDS - continued

Comparative information in respect of the preceding period is as follows:

			2022	
	Unrestricted fund £	Restricted funds £	Restricted Fixed Asset £	Total funds £
Fixed assets	-	-	6,733,306	6,733,306
Current assets	334,346	816,472	40,154	1,190,972
Current liabilities	-	(415,554)	-	(415,554)
Long term liabilities	-	(5,136)	-	(5,136)
Pension liability	-	(48,000)	-	(48,000)
	<u>334,346</u>	<u>347,782</u>	<u>6,773,460</u>	<u>7,455,588</u>

19. MOVEMENT IN FUNDS

	Balance at 1 September 2022	Income	Expenditure	Gains/ (Losses)	Transfer out of the Trust	Balance at 31 May 2023
Restricted general funds						
General Annual Grant (GAG)	371,823	1,575,868	(1,760,755)	-	(186,936)	-
Transfer on conversion	-	-	-	-	-	-
Pupil Premium	6,710	103,935	(110,645)	-	-	-
UIFSM	-	42,240	(42,240)	-	-	-
Other DfE/ESFA Grants	16,649	98,827	(84,992)	-	(30,484)	-
Other restricted grants	600	183,782	(183,782)	-	(600)	-
Pension reserve	(48,000)	-	(22,000)	433,000	(363,000)	-
	<u>347,782</u>	<u>2,004,652</u>	<u>(2,204,414)</u>	<u>433,000</u>	<u>(581,020)</u>	<u>-</u>
Restricted fixed asset funds						
Transfer on conversion	6,294,566	-	(69,805)	-	(6,224,761)	-
Other DfE Capital Grants	472,871	41,588	(18,838)	-	(495,621)	-
Other Capital Donations	6,023	-	-	-	(6,023)	-
	<u>6,773,460</u>	<u>41,588</u>	<u>(88,643)</u>	<u>-</u>	<u>(6,726,405)</u>	<u>-</u>
Total restricted funds	7,121,242	2,046,240	(2,293,057)	433,000	(7,307,425)	-
Total unrestricted funds	334,346	170,068	(225,980)	-	(278,434)	-
Total funds	<u>7,455,588</u>	<u>2,216,308</u>	<u>(2,519,037)</u>	<u>433,000</u>	<u>(7,585,859)</u>	<u>-</u>

Creative Children's Academy Trust

Notes to the Financial Statements - continued for the Period 1 September 2022 to 31 May 2023

19. MOVEMENT IN FUNDS - continued

Comparatives for movement in funds

	Balance at 1 September 2021	Income	Expenditure	Gains/ (Losses)	Transfer out of the Trust	Balance at 31 August 2022
Restricted general funds						
General Annual Grant (GAG)	294,331	4,596,394	(4,518,902)	-	-	371,823
Transfer on conversion	-					-
Pupil Premium	8,195	294,109	(295,594)	-	-	6,710
UIFSM	-	137,984	(137,984)	-	-	-
Other DfE/ESFA Grants	34,675	262,712	(280,738)	-	-	16,649
Other restricted grants	600	633,809	(633,809)	-	-	600
Pension reserve	(3,533,000)		(562,000)	4,047,000	-	(48,000)
	<u>(3,195,199)</u>	<u>5,925,008</u>	<u>(6,429,027)</u>	<u>4,047,000</u>	<u>-</u>	<u>347,782</u>
Restricted fixed asset funds						
Transfer on conversion	6,499,175		(204,609)	-	-	6,294,566
Other DfE Capital Grants	471,734	25,413	(24,276)	-	-	472,871
Other Capital Donations	6,023					6,023
	<u>6,976,932</u>	<u>25,413</u>	<u>(228,885)</u>	<u>-</u>	<u>-</u>	<u>6,773,460</u>
Total restricted funds	3,781,733	5,950,421	(6,657,912)	4,047,000	-	7,121,242
Total unrestricted funds	268,182	446,861	(380,697)	-	-	334,346
Total funds	4,049,915	6,397,282	(7,038,609)	4,047,000	-	7,455,588

The specific purpose for which the funds are to be applied are as follows:

1. Restricted general funds must be used for the normal running costs of the Academy in line with the Master Funding Agreement and restrictions from other sources of funding.
2. Restricted fixed asset funds are used solely for capital purposes in line with the strategic objectives of the Trust.

The restricted pension fund was in surplus of £363,000 at 1 January 2023, at which point Anston Greenlands Primary School, Thorpe Hesley Primary School and Redscope Primary School were all transferred to another Multi Academy Trust. This surplus was transferred to the new Multi Academy Trust that these schools have joined.

Under the funding agreement with the Secretary of State, the academy was not subject to a limit on the amount of GAG that it could carry forward at 31 May 2023.

**Notes to the Financial Statements - continued
for the Period 1 September 2022 to 31 May 2023**

20. PENSION AND SIMILAR OBLIGATIONS

The charity's employees belong to two principal pension schemes: the Teachers' Pension Scheme England and Wales (TPS) for academic and related staff; and the Local Government Pension Scheme (LGPS) for non-teaching staff, which is managed by South Yorkshire Pensions Authority. Both are multi-employer defined benefit schemes.

The latest actuarial valuation of the TPS related to the period ended 31 March 2016 and of the LGPS to the period ended 31 March 2019.

There were no outstanding or prepaid contributions at either the beginning or the end of the financial year.

Teachers' pension scheme

The Teachers' Pension Scheme (TPS) is a statutory, contributory, defined benefit scheme, governed by the Teachers' Pension Scheme Regulations 2014. Membership is automatic for teachers in academies. All teachers have the option to opt-out of the TPS following enrolment.

The TPS is an unfunded scheme to which both the member and employer makes contributions, as a percentage of salary - these contributions are credited to the Exchequer. Retirement and other pension benefits are paid by public funds provided by Parliament.

Valuation of the teachers' pension scheme

The Government Actuary, using normal actuarial principles, conducts a formal actuarial review of the TPS in accordance with the Public Service Pensions (Valuations and Employer Cost Cap) Directions 2014 published by HM Treasury every 4 years. The aim of the review is to specify the level of future contributions. Actuarial scheme valuations are dependent on assumptions about the value of future costs, design of benefits and many other factors. The latest actuarial valuation of the TPS was carried out as at 31 March 2016. The valuation report was published by the Department for Education on 5 March 2019. The key elements of the valuation and subsequent consultation are:

- employer contribution rates set at 23.68% of pensionable pay (including a 0.08% administration levy)
- total scheme liabilities (pensions currently in payment and the estimated cost of future benefits) for service to the effective date of £218,100 million and notional assets (estimated future contributions together with the notional investments held at the valuation date) of £196,100 million, giving a notional past service deficit of £22,000 million
- the SCAPE rate, set by HMT, is used to determine the notional investment return. The current SCAPE rate is 2.4% above the rate of CPI. The assumed real rate of return is 2.4% in excess of prices and 2% in excess of earnings. The rate of real earnings growth is assumed to be 2.2%. The assumed nominal rate of return including earnings growth is 4.45%.

The next valuation result is due to be implemented from 1 April 2024.

The employer's pension costs paid to TPS in the period amounted to £177,378 (2022 - £480,328).

A copy of the valuation report and supporting documentation is on the Teachers' Pensions website.

Under the definitions set out in FRS 102, the TPS is an unfunded multi-employer pension scheme. The charity has accounted for its contributions to the scheme as if it were a defined contribution scheme. The charity has set out above the information available on the scheme.

Creative Children's Academy Trust

Notes to the Financial Statements - continued for the Period 1 September 2022 to 31 May 2023

20. PENSION AND SIMILAR OBLIGATIONS - continued

Local government pension scheme

The LGPS is a funded defined benefit pension scheme, with the assets held in separate trustee administered funds. The total contribution made for the period ended 31 May 2023 was £147,279 (2022: £350,914), of which employer's contributions totalled £109,490 (2022: £262,637) and employees' contributions totalled £37,789 (2022: £88,277). The agreed contribution rates for future years are 16.5% to 16.9% for employers and 5.5% to 12.5% for employees.

Parliament has agreed, at the request of the Secretary of State for Education, to a guarantee that, in the event of academy closure, outstanding Local Government Pension Scheme liabilities would be met by the Department for Education. The guarantee came into force on 18 July 2013.

The amounts recognised in the Balance Sheet are as follows:

	Defined benefit pension plans	
	2023	2022
	£	£
Present value of funded obligations	(3,696,000)	(4,173,000)
Fair value of plan assets	4,059,000	4,125,000
Transfer out on academies leaving the Trust	<u>(363,000)</u>	<u>-</u>
	-	(48,000)
Present value of unfunded obligations	<u>-</u>	<u>-</u>
Deficit	<u>-</u>	<u>(48,000)</u>
Net liability	<u>-</u>	<u>(48,000)</u>

The amounts recognised in the Statement of Financial Activities are as follows:

	Defined benefit pension plans	
	2023	2022
	£	£
Current service cost	118,000	781,000
Net interest from net defined benefit asset/liability	1,000	64,000
Past service cost	<u>-</u>	<u>-</u>
	<u>119,000</u>	<u>845,000</u>
Actual return on plan assets	<u>(190,000)</u>	<u>(68,000)</u>

Changes in the present value of the defined benefit obligation are as follows:

	Defined benefit pension plans	
	2023	2022
	£	£
Opening defined benefit obligation	4,173,000	7,363,000
Current service cost	118,000	781,000
Contributions by scheme participants	31,000	91,000
Interest cost	59,000	132,000
Actuarial losses/(gains)	(681,000)	(4,183,000)
Benefits paid	<u>(4,000)</u>	<u>(11,000)</u>
Closing defined benefit obligation (immediately prior to the transfer out of the Academy Trust on 1 January 2023)	<u>3,696,000</u>	<u>4,173,000</u>

Creative Children's Academy Trust

**Notes to the Financial Statements - continued
for the Period 1 September 2022 to 31 May 2023**

20. PENSION AND SIMILAR OBLIGATIONS - continued

Changes in the fair value of scheme assets are as follows:

	Defined benefit pension plans	
	2023	2022
	£	£
Opening fair value of scheme assets	4,125,000	3,830,000
Contributions by employer	97,000	283,000
Contributions by scheme participants	31,000	91,000
Expected return	58,000	68,000
Actuarial gains/(losses)	(248,000)	(136,000)
Benefits paid	<u>(4,000)</u>	<u>(11,000)</u>
Closing value of scheme assets (immediately prior to the transfer out of the Academy Trust on 1 January 2023)	<u>4,059,000</u>	<u>4,125,000</u>

The amounts recognised in other recognised gains and losses are as follows:

	Defined benefit pension plans	
	2023	2022
	£	£
Actuarial gains/(losses)	<u>433,000</u>	<u>4,047,000</u>
	<u>433,000</u>	<u>4,047,000</u>

Immediately prior to the transfer out of the Academy Trust on 1 January 2023, the Academy Trust's share of the assets in the scheme were:

	Defined benefit pension plans	
	2023	2022
	£	£
Equities	2,882,000	2,888,000
Government bonds	771,000	825,000
Corporate and other bonds	365,000	371,000
Cash and other liquid assets	<u>41,000</u>	<u>41,000</u>
	<u>4,059,000</u>	<u>4,125,000</u>

Principal actuarial assumptions at the Balance Sheet date (expressed as weighted averages):

	2023	2022
Discount rate	4.75%	4.25%
Future salary increases	3.95%	4.05%
Future pension increases	2.95%	3.05%

Creative Children's Academy Trust

Notes to the Financial Statements - continued for the Period 1 September 2022 to 31 May 2023

20. PENSION AND SIMILAR OBLIGATIONS - continued

The current mortality assumptions include sufficient allowance for future improvements in mortality rates. The assumed life expectations on retirement age 65 are:

	2023	2022
Retiring today		
Males	22.6	22.6
Females	25.4	25.4

Retiring in 20 years		
Males	24.1	24.1
Females	27.3	27.3

Sensitivity analysis

	2023	2022
	£	£
Discount rate +0.1%	(103,000)	(116,000)
Discount rate -0.1%	105,000	119,000
Mortality assumption - 1 year increase	148,000	167,000
Mortality assumption - 1 year decrease	(145,000)	(163,000)
CPI rate +0.1%	82,000	92,000
CPI rate -0.1%	(80,000)	(90,000)

21. LONG-TERM COMMITMENTS, INCLUDING OPERATING LEASES

Minimum lease payments under non-cancellable operating leases fall due as follows:

	2023	2022
	£	£
Within one year	-	15,755
Between one and five years	-	24,655
	-	40,410

The Trust had no operating lease commitments at the balance sheet date as all schools transferred out of the Trust on 1 January 2023 and joined another Trust.

22. RELATED PARTY DISCLOSURES

No related party transactions took place in the period of account.

Creative Children's Academy Trust

**Notes to the Financial Statements - continued
for the Period 1 September 2022 to 31 May 2023**

23. TRANSFER OUT ON ACADEMIES LEAVING THE ACADEMY TRUST

On 1 January 2023, Anston Greenlands Primary School, Thorpe Hesley primary School and Redscope Primary School all transferred out of the Academy Trust to join another Academy Trust. The figures transferred out of the Trust are as follows:

	Anston Greenlands Primary School	Thorpe Hesley Primary School	Redscope Primary School	Trust Central Services	Total £
Tangible fixed assets					
Leasehold land and buildings	1,655,496	2,981,000	1,907,163	-	6,543,659
Fixtures and fittings	8,682	38,748	19,349	-	66,779
Computer equipment	13,054	21,220	18,681	565	53,520
Current assets					
Stock	2,114	-	-	-	2,114
Cash	99	-	-	-	99
Debtors due within one year	43,081	66,509	110,267	15,148	235,005
Liabilities					
Creditors due within 1 year	(62,235)	(189,317)	(65,616)	(64,496)	(381,664)
Creditors due after more than 1 year	(4,494)	-	-	-	(4,494)
Cash at Bank due to new Trust at date of transfer	164,005	348,469	152,282	43,085	707,841
Pensions					
Pensions - pension scheme assets				4,059,000	4,059,000
Pensions - pension scheme liabilities				(3,696,000)	(3,696,000)
	1,819,802	3,266,629	2,142,126	357,302	7,585,859

	Restricted General	Restricted Fixed Asset	Restricted Pension	Unrestricted General Fund	Total transfer out in 2023
Restricted general funds					
Anston Greenlands Primary School	10,776	1,687,775	-	121,251	1,819,802
Thorpe Hesley Primary School	118,674	3,045,613	-	102,342	3,266,629
Redscope Primary School	73,686	1,993,018	-	75,422	2,142,126
Trust Central Services			363,000	(5,698)	357,302
	203,136	6,726,406	363,000	293,317	7,585,859