

First Class

Inclusive

Collaborative

Forward-thinking



Kite Academy Trust



MONDAY



ACW7NS6J

A5

05/02/2024

#286

COMPANIES HOUSE

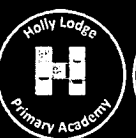
KITE ACADEMY TRUST

A COMPANY LIMITED BY GUARANTEE

REGISTERED NUMBER: 09785186 (ENGLAND & WALES)

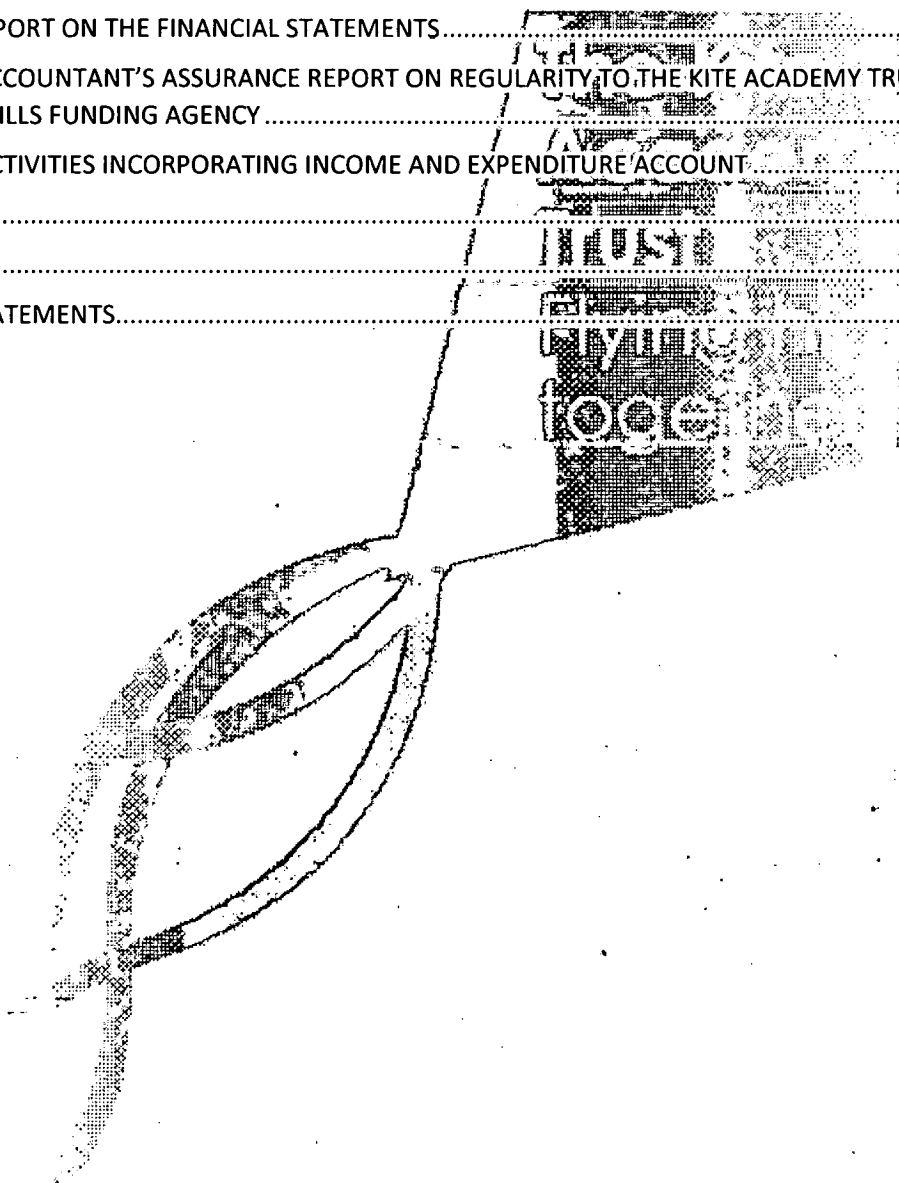
ANNUAL REPORT & FINANCIAL STATEMENTS

FOR THE YEAR ENDED 31 AUGUST 2023



Contents

REFERENCE AND ADMINISTRATIVE DETAILS	1
TRUSTEES' REPORT	3
GOVERNANCE STATEMENT	16
STATEMENT ON REGULARITY, PROPRIETY AND COMPLIANCE	19
STATEMENT OF TRUSTEES' RESPONSIBILITIES	20
INDEPENDENT AUDITOR'S REPORT ON THE FINANCIAL STATEMENTS	21
INDEPENDENT REPORTING ACCOUNTANT'S ASSURANCE REPORT ON REGULARITY TO THE KITE ACADEMY TRUST AND THE EDUCATION AND SKILLS FUNDING AGENCY	25
STATEMENT OF FINANCIAL ACTIVITIES INCORPORATING INCOME AND EXPENDITURE ACCOUNT	27
BALANCE SHEET	28
STATEMENT OF CASH FLOWS	29
NOTES TO THE FINANCIAL STATEMENTS	30



REFERENCE AND ADMINISTRATIVE DETAILS

OF THE ACADEMY TRUST, ITS TRUSTEES AND ADVISERS FOR THE YEAR ENDED 31 AUGUST 2023

Members

J. Allan	
M. Devitt	
D. Natnael	(appointed 22/11/22)
M. Rees	(appointed 09/12/22)
G. Williams	(appointed 12/12/22)
R. Murton	(resigned 30/09/22)
A. Johnson	(resigned 22/11/22)

Trustees

D. Andrews	Chair
J. Allan	Vice Chair
K. Findlay	Vice Chair
L. Quinn	
P. Elston	
P. Syson-Harvey	
A. Johnson	(appointed 23/11/22)
E. McClelland	(appointed 09/11/22 – resigned 15/12/22)
M. Rees	(resigned 07/09/23)
J. Brown	(resigned 02/05/23)
M. Ellis	(resigned 31/08/23)

Executive Team

J. Meek	Chief Executive Officer & Accounting Officer (appointed 01/09/23)
C. Dickinson	Chief Executive Officer & Accounting Officer (resigned 31/08/23)
J. Godolphin	Director of Operations
P. Brooks	Director of Finance & Chief Financial Officer (resigned 10/02/23)
J. Coleman	Director of Finance & Chief Financial Officer (appointed 01/04/23)
J. Ibbotson	Head of Improvement (resigned 30/03/23)
M. Swain	Director of Education (appointed 01/09/23)
S. Meakin	Executive Head Teacher
J. Rogers	Executive Head Teacher
D. Hughes	Executive Head Teacher (appointed 01/09/23)

Senior Leadership

A. Stone	Head Teacher – Cross Farm (appointed 01/09/22)
A. Stone	Head Teacher – Folly Hill
A. Batalli	Head Teacher – The Ferns (appointed 01/09/22)
L. Wicksey	Head Teacher – The Grove
C. Freeman	Head Teacher – Hale
J. Titley-Rawson	Head Teacher – Holly Lodge (appointed 01/09/22)
S. Armstrong	Head Teacher – Lakeside
S. Willans	Head Teacher – Mytchett
K. Money	Head Teacher – Sandringham (resigned 17/11/22)
S. Randles	Head Teacher – Sandringham (appointed 18/11/22 – resigned 31/08/23)
T. Lodge	Head Teacher – Sandringham (appointed 01/09/23)
M. Wilson	Head Teacher – Wyke (terminated 03/02/23)
T. Wisnia	Acting Head Teacher – Wyke (seconded 30/09/22)
S. Andrews	Lead Inclusion Manager
K. Lye	Improvement Advisor
T. Wisnia	Improvement Advisor



Company Registered Number

09785186

Company Name

The Kite Academy Trust

Principal & Registered Office

Holly Lodge Primary Academy
Stratford Road
Ash Vale
Surrey
GU12 5PX

Independent Auditor

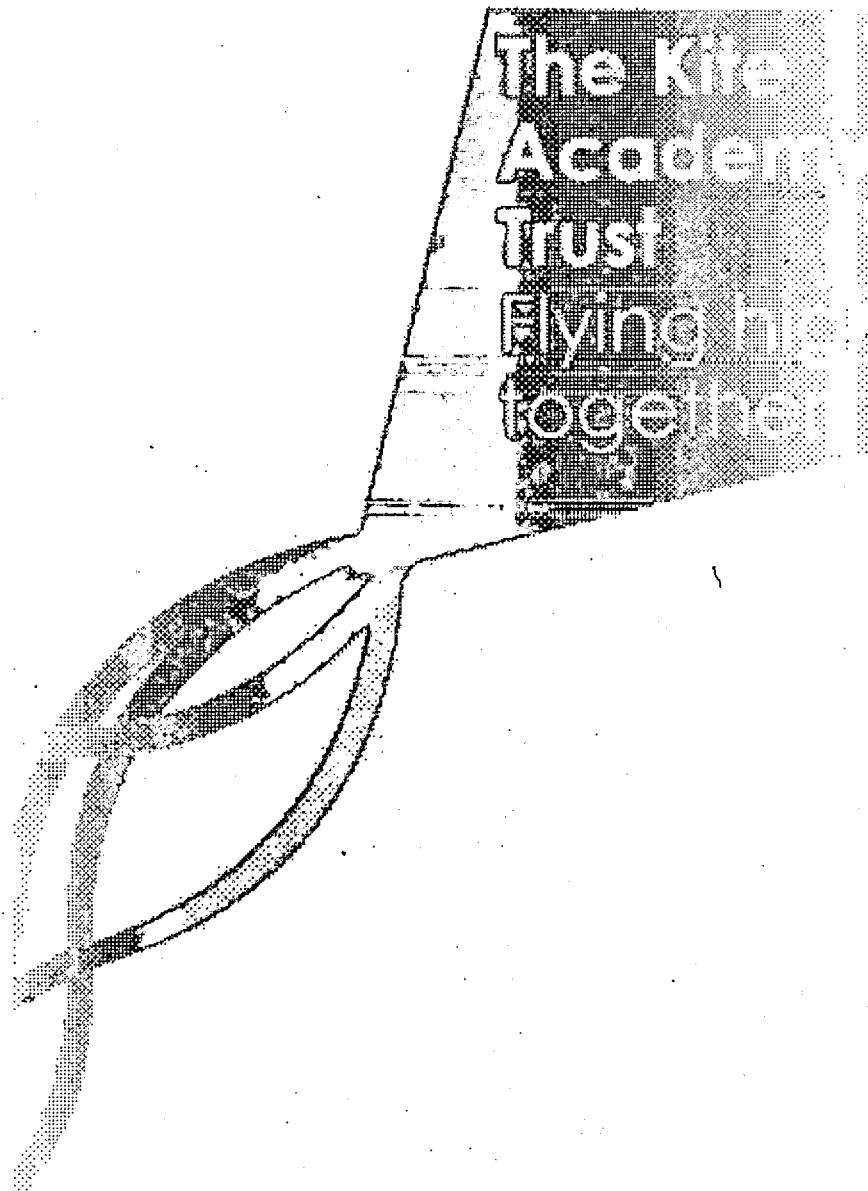
Buzzacott LLP
130 Wood Street
London
EC2V 6DL

Bankers

Lloyds Bank PLC
PO Box 1000
BX1 1LT

Solicitors

Stone King LLP
Boundary House
91 Charterhouse Street
London
EC1M 6HR



TRUSTEES' REPORT

FOR THE YEAR ENDED 31 AUGUST 2023

The Trustees present their Annual Report together with the financial statements and auditor's report of the charitable company for the period 1 September 2022 to 31 August 2023. The Annual Report serves the purposes of both a Trustees' Report and a Directors' Report under company law.

The Trust also trades under the names Kite Academy and Kite.

The Trust was incorporated on 18 September 2015 and converted on 1 October 2015. The Trust was formed when five local primary schools converted to Academy Trust status under the Academies Act 2010. Since that date five other schools have joined the Trust:

- 1st December 2016 - Holly Lodge School
- 1st August 2018 - Wyke Primary School
- 1st June 2019 – Fernhill Primary School
- 1st October 2019 – Hale Primary School
- 1st March 2022 – Folly Hill Infant School

The Trust operates academies for children aged 2-11 serving a catchment area around Frimley, Mytchett, Ash, Normandy, Farnborough and Farnham.

The capacity of the Trust is 2,760 primary aged children with two 25 place and two 48 place nurseries, including 2- year old FEET funded children, across the Trust.

The Trust comprised of ten academies as at August 31st 2023:

- Cross Farm Infant (4-7 year olds)
- Folly Hill Infant (4-7 year olds)
- The Ferns Primary (4-11 year olds)(*formally Fernhill Primary*)
- The Grove Primary (4-11 year olds with a specialist COIN Centre)
- Hale Nursery & Primary (2-11 year olds)
- Holly Lodge Primary (4-11 year olds)
- Lakeside Nursery & Primary (2-11 year olds)
- Mytchett Primary & Nursery (2- 11 year olds)
- Sandringham Infant & Nursery (2-7 year olds)
- Wyke Primary (4-11 year olds)

STRUCTURE, GOVERNANCE & MANAGEMENT

Constitution

The Kite Academy Trust is a charitable company limited by guarantee and an exempt charity. The charitable company's Memorandum of Association is the primary governing document of the Academy Trust.

The Trustees of the Kite Academy Trust are also the directors of the charitable company for the purpose of company law. Details of the Trustees who served during the period are included in the reference and administrative details on page 1.

The principal object is to advance for the public benefit of education in the United Kingdom.

Members' Liability

Each Member of the charitable company undertakes to contribute to the assets of the charitable company in the event of it being wound up while they are a member, or within one year after they cease to be a Member, such amount as may be required, not exceeding £10, for the debts and liabilities contracted before they ceased to be a Member.

Method of Recruitment and Appointment or Election of Trustees

The management of the Trust is the responsibility of the Trustees who are elected and co-opted under the terms of the Articles of Association. The Board of Trustees at 31 August 2023 comprised 3 founder Trustees and 5 Member-appointed Trustees. Trustees are appointed through a process whereby they are interviewed by Trustees and Members followed by a recommendation to the Members for ratification. Services such as Inspiring Governance and Governors for Schools have been used for the recruitment pool.

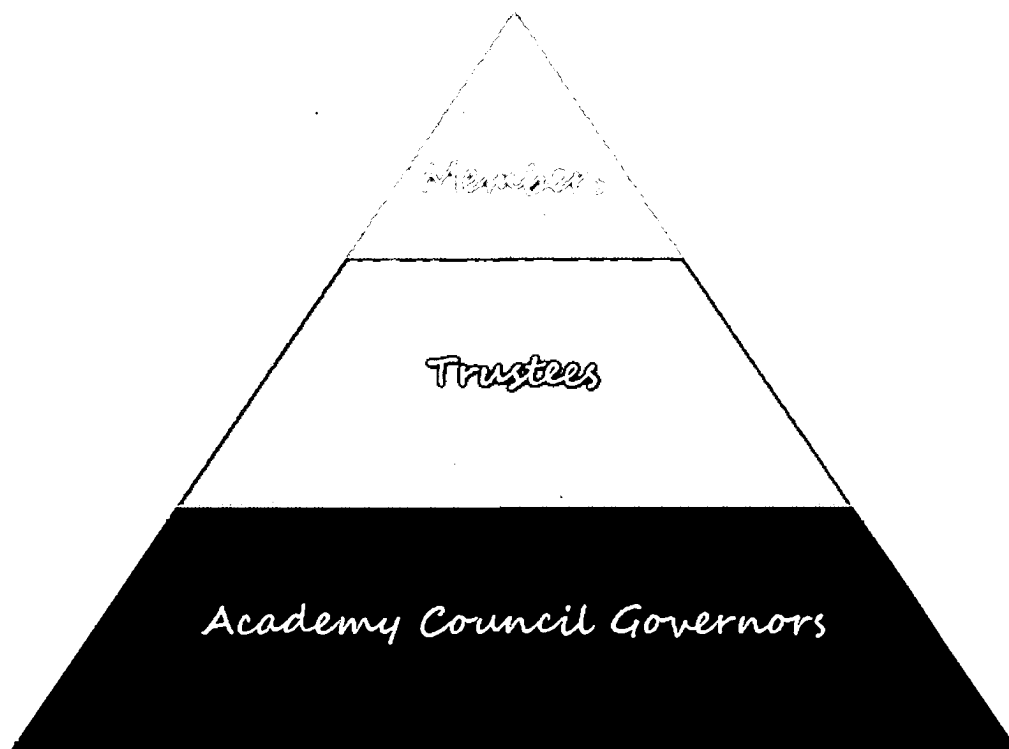
Policies and Procedures Adopted for the Induction & Training of Trustees

New Trustees are provided with an induction session with the Chair and Vice Chairs of the Trust Board. All Trustees have undertaken relevant training courses for their role and a record of continuous professional development is kept by the Trust's Governance Manager.

A Trustee with responsibility for safeguarding has been nominated to lead in this area on behalf of the Trust Board and has created guidance for nominated Academy Council Governors with responsibility for safeguarding following their completion of training provided by an external safeguarding expert. The Trust seeks external support from agencies such as the Education & Skills Funding Agency, Confederation of Schools Trust, National Governors Association, Trust Governance Insight, GovernEd, DfE and Executive Educators for guidance on best practice. Trustees share feedback at Board Meetings and through Committee meetings.

Academy Council Governors were provided with termly training sessions and briefings throughout the year to support them with their role.

Organisational Structure

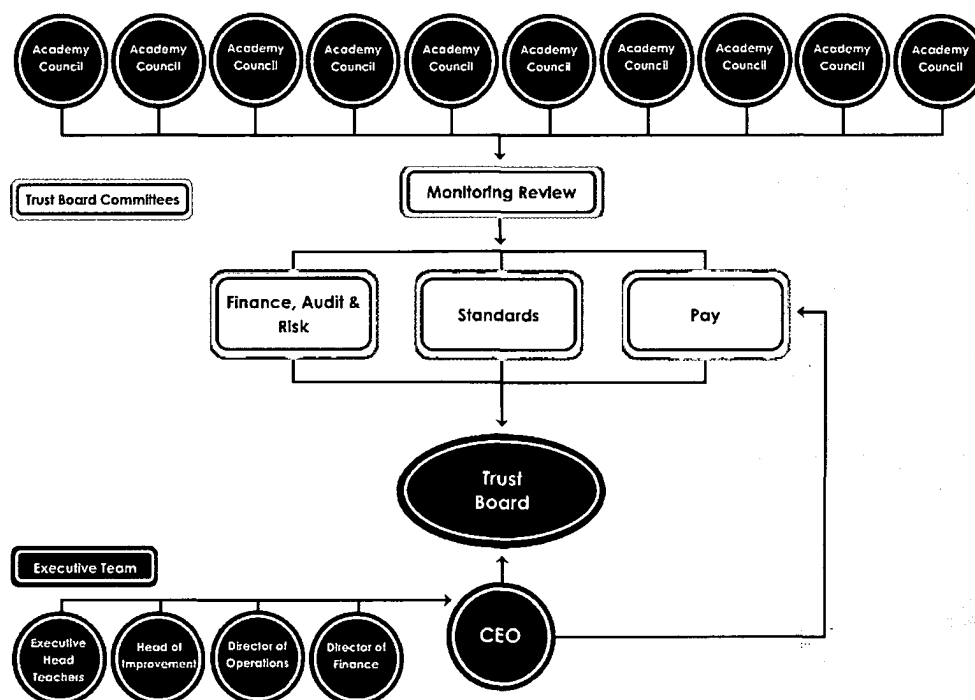


The Members of the Kite Academy Trust hold an Annual General Meeting each year, along with further meetings. This year, the Members have met on a termly basis with the Chair of the Trust Board and CEO.

During the period of review, the Trust Board met 11 times. The Trustees have established an overall framework for governance of the academies and has determined membership, terms of reference and delegated powers. The Scheme of Delegation clearly identifies the delegated powers and responsibilities of each group.

The Executive Team report to and answer questions from the Trustees at Board Committee meetings and Academy Head Teachers to Governors at their Academy Councils meetings.

Governance across the Trust



Each Academy has an Academy Council comprising 7-11 Governors. Each Academy Council appoints: a Chair; Vice Chair; a Governor responsible in the event of allegation (child protection) against the Head Teacher; a Governor responsible for special educational needs and disability (SEND); a Governor responsible for safeguarding. Governors monitor the progress of the Academy Improvement Plan on a termly basis. Governor Monitoring Reports are discussed at the Academy Council meeting and an Executive Summary is written by the Chair to report the academy's strengths, challenges and areas of risk to the Trustees. The Executive Summary is then reviewed and discussed by the Monitoring Review Committee and actions assigned to the Standards Committee, Finance, Audit & Risk Committee or the Executive Team as appropriate.

The Trust Board Committees constitute a minimum of three Trustees and invite a member(s) of the Executive Team to attend each meeting. The Committee is chaired by a Trustee. Risks identified by the Committee are either reported to the Trust Board or actioned to the Executive Team (as appropriate) to ensure that relevant personnel are informed and appropriate action taken. Following the Trust Board meeting, feedback is shared with Academy Councils, through the Academy Council Chair, to ensure that all governance stakeholders are kept well informed.

The Standards Committee and the Finance, Audit & Risk Committee meet twice a term. The Monitoring Review Committee and the Pay Committee meet once a term.

A number of working parties have also been created with specific areas of focus; during the year 2022-23 these related to IT, Estates and Risk Management.

Finance, Audit & Risk Committee

Responsible for:

- Supporting the Board of Trustees by recommending a framework for establishing and maintaining for optimised employment given the resources available to the Trust;
- Advising the Board of Trustees on financial planning, systems and controls to enable the proper management of the financial resources;

- Making recommendations to the Board of Trustees for the use of Reserves;
- Developing strategies for the employment of staff, communications, procurement, value for money, health & safety and facilities management;
- Supporting the Board of Trustees in providing an added level of scrutiny in the monitoring of financial performance across the Trust and the performance of other consolidated services;
- Ensuring that the Board of Trustees is informed and make financial recommendations;
- Monitoring the Risk Register and reporting high priority issues to the Board of Trustees;
- Considering the areas that will be monitored by internal audit over the year;
- Reviewing the auditor's report and considering recommendations to the Board of Trustees.

Standards Committee

Responsible for:

- Supporting the Board of Trustees in providing an added level of scrutiny in the monitoring of standards and performance across the Trust.
- Supporting the Board of Trustees in ensuring that the framework is established and maintained for improving the standards of teaching and learning within the Trust by advising and making recommendations to the Board and holding the Executive leadership to account;
- Advising the Board of Trustees about the standards across the Trust and particularly identifying any support that may be needed in a specific academy;
- Making recommendations to the Board of Trustees on curriculum development;
- Ensuring that strategies are in place to raise achievement for all children;
- Ensuring there is high quality teaching across the Trust;
- Ensuring there is reliable assessment and high-quality tracking data for all children;
- Leading discussions at the Board of Trustees on school improvement initiatives and the impact;
- Advising the Board of Trustees on equality for all children across the Trust;
- Advising the Board of Trustees on any safeguarding concerns across the Trust and recommendations for any actions required;

Pay Committee

Responsible for:

- Supporting the Board of Trustees by recommending a framework for establishing and maintaining optimised employment within the resources available to the Trust;
- Recommending to the Board of Trustees staffing salaries including cost of living increases for staff;
- Leading the professional growth consultation with the CEO;
- Supporting the Board of Trustees in providing an added level of scrutiny in the monitoring of the application of the pay policy in a fair and transparent way.

Chairs of Academy Councils meet with the Chair and Vice Chair of the Board of Trustees termly to ensure that there is good communication between academies and the Trustees. They review, recommend and implement best governance practice.

The Leadership Board comprises all academy Head Teachers, the Executive Team and the Academies' Improvement & Support Team (AsIST). They meet regularly to ensure that standards across the academies are high and academies are supported if there are any concerns. They look at ways to ensure consistencies across the academies and their day-to-day operations.

The Trustees are responsible for adopting an annual plan and budget, approving the statutory accounts, monitoring the use of budgets and data, and making major decisions about the direction of the Trust and capital expenditure.

The Trustees have delegated to the Executive Team the day-to-day responsibility for ensuring the financial controls of the Trust conform to the requirements of both propriety and good financial management of the agreement

between the Kite Academy Trust and the Secretary of State for Education, along with the day-to-day management of the Trust. The Accounting Officer is responsible for reporting to the Board of Trustees any material weaknesses or break downs in financial controls. The Head Teachers of each academy have delegated authority for the functions of internal organisation, management, safeguarding and control of the academy, and implementation of agreed policies.

The Academy Head Teacher, working with the Executive Team, is responsible for the appointment of staff in their academy. The Executive Team, working with the Chair of Academy Council, is responsible for the appointment of a Head Teacher of an academy. Academy Head Teacher appointments are ratified by the Board of Trustees.

Pay Policy for Key Management Personnel

The pay structure for the Executive Team has been reviewed as the Trust has grown. The pay structure has been benchmarked by Trustees against similar roles and responsibilities of personnel in other academies and companies; external advice is also sought for all key personnel in the Central Team.

The National Teachers' Pay & Conditions have been adopted for all teaching staff across the Trust. The Trust has implemented its own Support Staff pay structure which ensures a consistent approach to pay.

Incremental pay increases are given through the Trust's Professional Growth Policy which is applied to all staff. With the exception of any staff subject to Capability or Disciplinary procedures, all staff are rewarded for identifying an area of their work for development during the year, researching and progressing this area and reporting the growth at the end of the review period. The Pay Policy is reviewed annually and shared with all staff via the Trust's intranet.

Engagement with Employees & Trade Union Facility Time

There are currently no union officials in the Trust and there is therefore no facility time to report. The Trust does, however, engage with employees through 'Kite Strings' – a staff representative group - which is constituted of self-nominated, non-leadership employees from across the Trust. The Trust makes provision for a separate fund for wellbeing which, in addition to supporting academies with long term sickness, is used to release staff for a number of activities such as facilities time, TA training, jury service and includes Kite Strings meetings.

Engagement with Suppliers, Customers and Others in Business Relationship with the Trust

Our Managers work closely with suppliers to ensure best value for money and contribute to developing our internal services. These have included FSE, Access, Microsoft and Tucasi. During 2022/23 we have migrated our payroll function from an external provider to Access Payroll.

Connected Organisations, Including related Party Relationships

The Kite Academy Trust has strong links with:

- The Anchor Group of Surrey CEOs
- The schools in the Surrey Heath Learning Partnership
- The South Farnham Teaching School (SCITT & ECT programme)
- Local Universities (teaching practice students)
- SJB Maths hub (working on Maths Mastery with academy staff)
- Local secondary schools (work experience students)
- Local junior schools (where the children from our three Infant schools move to)
- Surrey County Council Childcare and Early Years Services
- Surrey County Council Education Department
- Schools Alliance for Excellence (SaFE)
- Confederation of School Trusts
- Trust Governance Insight
- Each Academy has its own PTA who support the academy through fundraising

No Trustee received any remuneration in respect of their services as a Trustee during the year, nor for any work undertaken on behalf of the Trust.

Trustees' Indemnities

Trustees benefit from indemnity insurance purchased at the Academy Trust's expense (RPA) to cover the liability of the Trustees which by virtue of any rule of law would otherwise attach them in respect of any negligence, default or breach of trust or breach of duty of which they may be guilty in relation to the Academy Trust.

This is provided that any such insurance shall not extend to any claim arising from any act or omission which the Trustees knew to be a breach of trust or breach of duty or which was committed by the Trustees in reckless disregard to whether it was a breach of trust or breach of duty or not and provided also that any such insurance shall not extend to the costs of any unsuccessful defence to a criminal prosecution brought against the Trustees in their capacity as directors of the Academy Trust. The limit of this indemnity is £10,000,000 per academy.

OBJECTIVES & ACTIVITIES

Mission

Our motto, *Flying high together*, underpins the vision of the Trust to work collaboratively to achieve our mission:

"Together we inspire a lifelong love of learning, which enables all our children to achieve more than they ever believed possible."

The main objectives of the Kite Academy Trust during the year ended on 31st August 2023 were:

- To be a first class, collaborative and forward-thinking family of local schools ensuring excellence in Primary Education;
- Our children will thrive and achieve as confident and caring, local, national and global citizens;
- Families will embrace opportunities across Kite, helping to promote the best outcomes for all children;
- Empowered and nurtured teams will enhance expertise, share best practice and have the professional courage to explore possibilities;
- With strategies in place for growth, the Multi Academy Trust will develop sustainability, delivering excellent Primary Education in local communities.

Activities for Achieving Objectives

The Key activities for achieving these objectives are summarised below:

- Regular meetings for leaders at Executive meetings, Leadership Board meetings, Academies' Improvement & Support Team (AsIST) meetings, subject leader meetings and network meetings;
- Further development of Executive Team consisting of CEO, Director of Finance, Director of Operations, Executive Head Teachers and Head of Academy Improvement;
- Further development of leadership structure with two experienced Executive Head Teachers and Head of Academy Improvement, along with AsIST team, providing consistent support for leaders across the Trust;
- Further development of AsIST to support school improvement and coaching leaders in all academies;
- Use of AsIST to support all academies by providing coaching and training, both virtual and face to face;
- Use of an AsIST team member to be seconded to Wyke in the absence of a Head Teacher;
- Academy Improvement supported by Executive Team working with each Academy Head;
- Three academy leaders seconded to AsIST for specific projects;
- Lead Inclusion Advisor employed centrally to support all academy Inclusion Leads;
- Use of Teams for all staff to attend virtual meetings and training sessions, as required;
- Cross-Trust meetings for subject leadership, year groups and networks throughout the year;
- Programme of training opportunities, including virtual training, for all staff led by AsIST;
- Consistent assessment system used across the Trust, with training for new staff;
- Successful application for Condition Improvement Funding (CIF) bids to ensure high quality estates;

- Implementation of IT strategy across the Trust to ensure consistency of technology;
- Implementation of new payroll and HR system in line with finance system;
- Further development of the electronic document processing system for all staff to access key documents and share across the Trust;
- CEO attending networks with other CEOs;
- Further training opportunities for Clerk to the Trust Board to become Governance Professional;
- Further development of the governance system ensuring consistent monitoring and communication across the Trust;
- Review of the Scheme of Delegation to take into consideration different structure;
- Further development of pastoral team with FSWs and Inclusion Welfare Officer to support families, particularly strong through pandemic;
- Continued subscription for Confederation of School Trusts (CST) and attendance at conference to provide up to date information to inform decision making;
- Communication and support from the Regional Schools' Commissioner.

Review of Activities

Activity Undertaken	Status
Implement the IT strategy across the Trust	Achieved
Develop a new leadership structure to provide consistencies and to be financially viable for the future	Achieved
Reduce PAN at two academies to ensure viability	Achieved
Introduce new payroll & HR system	Achieved
Further develop the more robust system of governance across the Trust	Achieved
Provide training opportunities for staff and Governors across the Trust	Achieved
Introduce the Thrive approach in selected academies	Achieved
Introduce Maintenance technicians to work together on the maintenance in academies	Achieved
Introduce Staff Safe on CPOMs to all academies to ensure that staff can report any concerns confidentially	Achieved
Offer secondments across the Trust to provide further opportunities for staff and spread good practice including working in the AsIST team	Achieved
Grow the Trust to 10+ local primary schools	Achieved
Continue to develop our FSW team to further support families including opening a foodbank	Achieved
Consult on moving Lakeside from Alphington Avenue to Mindenhurst Road	Achieved
Work with Surrey CC to make the Lakeside move	Achieved
Continue to engage with schools interested in joining the Trust	Impacted by OFSTED outcome
Continue to develop economies of scale and consistencies across the MAT through further development of Central Business Team	On Track
Further develop the Kite curriculum for use across the Trust	On Track
Work with Wyke and The Ferns to ensure improvement	On Track
Consider ways to become more energy efficient across the Trust	On Track

Engage with RSC about two academies with poor OFSTED outcomes	Achieved
Introduce new support staff pay structure to reflect the increased living wage throughout the pay bands	Achieved
Further develop our Staff voice through Kite Strings	Achieved
Develop a new financial structure with one bank account to ensure the financial viability of the Trust	On Track
Develop the use of The Ferns swimming pool to support swimming for children across the Trust	Impacted by OFSTED outcome
Increase in-house extended day provision for our children	On Track
Increase numbers on Board and at Members level to support the direction of the Trust	On Track

Public Benefit

In setting the Trust's objectives and activities, the Trustees have given careful consideration to the Charity Commission's general guidance on public benefit.

Main Activities Undertaken to Further the Charity's Purposes for the Public Benefit

The academies work with other schools in the Surrey Heath Learning Partnership to share practice and moderate learning

- We support the South Farnham Teaching School by training SCITT students and local universities by supporting training opportunities for student teachers;
- Two AsIST members and one Head Teacher work closely with South Farnham Teaching School to support the development of ECTs and SCITT students;
- We support local secondary schools by giving work experience opportunities for students and to support aspects of training for different courses;
- Working with other new MATs to support setting up systems.

STRATEGIC REPORT

Achievements & Performance

	CRO	FOL	HAL	HLG	LAK	MYT	SAN	TFN	TGR'	WYK
School Capacity	150	90	390	436	436	218	180	210	450	210
% Capacity	77	87	72	97	67	97	100	48	96	96
Special Provision									14	
N ^{os} in Provision									14	
Nursery Spaces			60		60	60	48			
% Capacity			60		60	100	100			
% Attendance	94.7	96.0	93.3	94.7	94.5	96.1	95.0	91.0	94.2	94.9
EYs GLD	63%	80%	72%	83%	49%	73%	70%	36%	83%	87%
Y1 Phonics	80%	95%	77%	88%	75%	90%	75%	27%	91%	83%
Y2 Phonics	84%	100%	65%	97%	85%	97%	95%	53%	91%	87%

	CRO	FOL	HAL	HLG	LAK	MYT	SAN	TFN	TGR*	WYK
KS1 Ex[†]										
Read	70%	72%	55%	79%	52%	79%	80%	12%	60%	71%
Write	65%	66%	57%	77%	28%	76%	66%	6%	46%	58%
Maths	72%	72%	53%	88%	44%	83%	84%	6%	60%	71%
Science	100%	90%	86%	95%	91%	93%	93%	40%	82%	94%
RWM	58%	66%	48%	72%	24%	76%	64%	10%	47%	55%
GDS										
Read	2%	21%	15.5%	22%	4%	24%	21%	0%	11%	19%
Write	11%	17%	1.7%	15%	0%	17%	12%	5%	8%	0%
Maths	4%	17%	12%	15%	0%	21%	12%	3%	13%	13%
RWM	0%	14%	1.7%	8%	0%	17%	21%	0%	6%	0%
Year 4										
Times Table Check % 20+			74%	59%	75%	53%		63%	64%	73%
KS2 Ex[†]										
Read			63%	77%	68%	84%		43%	82%	79%
Write			74%	80%	72%	77%		17%	77%	86%
Maths			60%	73%	50%	81%		26%	73%	82%
GPS			61%	70%	72%	65%		35%	77%	86%
Science			74%	85%	82%	90%		65%	83%	93%
RWM			47%	62%	43%	61%		9%	59%	68%
GDS										
Read			16%	28%	18%	19%		9%	31%	39%
Write			8%	10%	2%	10%		0%	6%	21%
Maths			19%	17%	12%	16%		4%	28%	14%
GPS			14%	18%	25%	16%		4%	31%	43%
RWM			3%	6%	0%	6%		0%	5%	11%
Scaled Scores										
Read			102	105	99	105		97	106	107
Maths			103	102	96	104		89	106	105
GPS			102	103	99	102		92	106	108

Key: Expected (Ex), Greater Depth (GDS), Grammar, Punctuation & Spelling (GPS)

*Results for The Grove Primary Academy include special provision data.

We intend to use financial KPIs, Integrated Curriculum Financial Planning tools and benchmarking data to evaluate performance across academies within the Kite Academy Trust. We will use this information to identify areas of best practice which will help us continually improve what we do for the benefit of our children.

FINANCIAL REVIEW

Going Concern

The Board of Trustees has considered the uncertainties of operating in the current economic climate and plans to make savings during 2023/24 are underway. When taking account pupil numbers, our response to adapting to the current cost of living crisis, along with the forecast cash and reserves the Board of Trustees has a reasonable expectation that the Trust has adequate resources to continue in operational existence for the foreseeable future. For this reason, it continues to adopt the going concern basis in preparing the financial statements. Further details regarding adoption of the going concern basis can be found in the statement of accounting policies.

Financial Report for the Year

The majority of Kite Academy Trust's income is obtained from the Education Skills & Funding Agency (ESFA) in the form of recurrent grants, the use of which is restricted to particular purposes. The results for the period are shown on page 27 in the statement of financial activities. During the year, the total income for the year was £15.3m (2022: £16.5m).

The overall financial position was in line with budget and reflects a number of exceptional items including:

- Additional ESFA Supplementary and Mainstream Schools Additional grant (MSAG) funding
- Teacher and support staff Pay inflation
- Investment in 6 Thrive Practitioners (funded from reserves)
- IT investment across academies

During the year improvements were made to the Kite Estate & facilities with the following projects:

- Condition Improvement Fund (CIF) site security projects at Hale and Holly Lodge Academies
- A CIF boiler and heating project at The Ferns
- An Energy Efficiency Granted funded LED lighting project at Holly Lodge Academy

The net movement in funds for the year was a reduction of £10m (2022: £10m increase) including an impairment charge of £11.3 million following recent ESFA land and building valuations (outlined in note 14), depreciation and amortisation and adjustments to pension schemes. Total fund balances before fixed asset fund and pension reserves totalled £1.5m. This is outlined in more detail in note 17.

Financial Preview of 2023/24

In agreeing the 2023/24 budget we have considered the impact of financial uncertainties upon the Trust. The budget operating position is a £150k deficit position with an additional £250k allocated from reserves for school improvement during the year. A key challenge for the Trust during 2023/24 is the anticipated reduction in ESFA funding resulting from a reduction in pupil numbers across the Trust. The impact of the war in Ukraine and the current economic crisis intensifies this challenge as our energy costs remain exceptionally high.

We have a savings target in place and have used ESFA benchmarking data to help focus on areas where savings could be achieved to secure our financial stability during these challenging economic times. Whilst we are aware the future remains uncertain, we believe that the assumptions underpinning the budget are robust.

Reserves Policy

The policy of the Kite Academy Trust is to carry forward a prudent level of resources designed to meet the capital programme, long term development plans, cyclical needs of renewal and any other unforeseen contingencies, plans to support Academies where pupil numbers are reducing. The Trust will aim to maintain a minimum Reserves balance of £500,000. Actual unrestricted funds as at 31st August 2023 were £1.5m.

Plans are in place to spend unrestricted reserves on the following projects:

- Trust contribution to successful CIF bids
- IT investment across the Trust
- The Staff Wellbeing Fund to support academies with long term absence cover, employment support, facilities time, jury service etc.

- A Trust contingency fund for Estates
- Investment in academy improvement across the Trust, with £250k earmarked for 2023/24.
- Supporting Specific Projects in Academies as approved by a Trust Board Project Panel.
- Plans for major capital projects

These investments are intended to benefit all children within the Kite Academy Trust.

Investment Policy

The Trustees are committed to ensuring that all funds under their control are managed in a way as to maximise return whilst minimising risk. The Trust's investment objectives are:

- To ensure adequate cash balances are maintained in the current account to cover day to day working capital requirements;
- Only invest funds surplus to operational need based on all financial commitments being met without the bank account becoming overdrawn;
- To ensure there is no risk of loss in the capital value of any cash funds invested;
- To protect the capital value of any invested funds against inflation;
- To optimise returns on invested funds.
- The need to have regard to social, environmental or ethical considerations

Investments will only be made with banking institutions which show good credit quality as assessed by the three main rating agencies (Fitch, Moody's, Standard and Poor's).

The Trust aims to manage the risk of default by spreading deposits across banking institutions which are authorized by the Bank of England through the Prudential Regulation Authority (PRA) (with reference to the Financial Conduct Authority (FCA)). Preferably, deposits will be selected with a maximum exposure of £5000,000 as, whilst this sum exceeds the current protection limit of £85,000 provided by the Financial Services Compensation Scheme (FSCS), it is accepted that it is not always practicable to find a sufficient number of investments of this size that meet the prudent criteria outlined in this policy.

Pension Scheme Deficit

The Kite Academy Trust currently has a projected deficit on the Local Government Pension scheme of £1.7m. The current deficit on the LGPS, of which has been apportioned to the Trust, does not crystallize immediately but the Trust ensures scheme contributions are paid as they fall due in line with those recommended by the pension scheme actuaries. The Trustees include the pension contributions within the budgets submitted to the ESFA as part of its annual application for GAG funding. The deficit is recognised on the balance sheet in accordance with FRS102.

Principal Risks and Uncertainties

The Kite Academy Trust has made a considered choice about its desired risk profile, taking account of its legal obligations, business objectives and public expectations. The recognised risks, and arrangements for managing present and future risks are recorded in the Trust's Risk Register.

During 2022/23 the Risk Policy and Risk Register were reviewed by a working party, which resulted in a more streamlined risk register. The main financial risk for the Trust is the current economic climate combined with a reduction in pupil numbers putting pressure on the Trust's financial position. Other risks include the following:

- Academies within the Trust receive unfavourable Ofsted reports
- Recruitment challenges impact the quality of teaching
- Risk that buildings and facilities are not maintained appropriately and compliant with appropriate legislation.
- Insufficient demand for places in its academies leaves the Trust unsustainable
- Information/data security breach and risk of Cyber attack

Fundraising

The Kite Academy Trust does not currently undertake any fundraising activities.

Streamlined Energy & Carbon Reporting

As the Trust is a large company, as determined by sections 465 and 466 of the Companies Act 2006, and consumes more than 40,000 KWh of energy (in the UK) in a reporting period, the Trust's UK energy use and associated greenhouse gas emissions, relating to gas, electricity, burning oil and transport fuel have been included in the period. The following summarises the energy and carbon use for The Kite Academy Trust for the academic year 2022/23. The Trust is comprised of ten academies, employs 387 staff members (actual staff) and has 2,419 pupils registered.

UK Greenhouse Gas Emissions and Energy Use Data for the period 1st September 2022 to 31st August 2023

Energy Consumption used to Calculate Emissions (kWh)

Scope 1 Emissions in metric tonnes CO ₂ e	Heating oil: 1,719 Gas consumption: 344,108 Owned Transport – minibus & van
Scope 2 Emissions in metric tonnes CO ₂ e	Purchased electricity: 237,645
Scope 3 Emissions in metric tonnes CO ₂ e	Business travel in privately owned vehicles 960.67
Total Gross Emissions in metric tonnes CO ₂ e	584,432
Intensity Ratio	0.24 CO ₂ e per pupil

Quantification & Reporting Methodology

In compiling this report, the guidance contained in HM Government Environmental Reporting Guidelines (updated March 2019), the GHG Reporting Protocol – Corporate Standard and UK Government Conversion Factors for Company Reporting (updated 2023) has been followed.

Measures taken to improve Energy Efficiency

Smart meters and efficient lighting have been installed in some academies within the Trust; it is intended to roll this out across the Trust. Video conferencing technology for staff meetings, leadership meetings and training has been improved so as to reduce the need for travel between sites.

Future Developments

The future plans for the Trust include the following objectives:

- To implement a Trust wide people strategy, to support the Trust in retaining and attracting the very best people;
- To develop a schedule of Trust-wide professional development to support the continuous improvement in the quality of education across the Trust;
- To continuously refine the Kite curriculum so that it is fully contextualised for the local community;
- To embed a pedagogy informed by cognitive science;
- To ensure the quality of education for our pupils, along with development and wellbeing of all Kite colleagues is placed at the heart of all trust financial planning;
- To refine quality assurance protocols across all areas of the Trust;

- To develop the site at Holly Lodge to ensure children from the new housing development have a place at their closest school;
- To embed a robust appraisal policy across the Trust;
- To continuously strengthen the Trust quality of education central support, so that it offers immediately responsive support as requested and required;
- To develop a strategy for growth;
- To design and build suitable accommodation for the Central Business Team;
- To have a succession plan for all key roles in the Trust;
- To develop a Trust-wide marketing strategy.
- To ensure strength in leadership at every level across the Trust.

Equal Opportunities

The Trustees aim to establish equal opportunity in all areas of its activities, including creating a working environment in which the contribution and needs of everyone are fully valued.

Funds Held as Custodian

The Kite Academy Trust and its Trustees do not act as the Custodian Trustees of any other charity.

Disclosure of Information to Auditor

Each of the persons who are Trustees at the time when this Trustees' report is approved has confirmed that:

- so far as that Trustee is aware, there is no relevant audit information of which the charitable company's auditor is unaware, and
- that Trustee has taken all the steps that ought to have been taken as a Trustee in order to be aware of any relevant audit information and to establish that the charitable company's auditor is aware of that information.

This report was approved by order of the Board of Trustees as the company directors, on 13th December 2023 and signed on its behalf by:



D. Andrews
Chair of Trustees

GOVERNANCE STATEMENT

Scope of Responsibility

As Trustees, we acknowledge we have overall responsibility for ensuring that The Kite Academy Trust has an effective and appropriate system of control, financial and otherwise. However, such a system is designed to manage rather than eliminate the risk of failure to achieve business objectives and can provide only reasonable and not absolute assurance against material misstatement or loss.

The Board of Trustees has delegated the day-to-day responsibility to the Chief Executive Officer, as Accounting Officer, for ensuring financial controls conform with the requirements of both propriety and good financial management and in accordance with the requirements and responsibilities assigned to it in the funding agreement between The Kite Academy Trust and the Secretary of State for Education. They are also responsible for reporting to the Board of Trustees any material weaknesses or breakdowns in internal control.

Governance

The information on governance included here supplements that described in the Trustees' Report and in the Statement of Trustees' Responsibilities. The Board of Trustees has formally met 11 times during the period. Attendance during the period at meetings of the Board of Trustees was as follows:

Name	Attendance	
D. Andrews (Chair)	11 of 11	
K. Findlay	9 of 11	
J. Allan	10 of 11	
L. Quinn	7 of 11	
M. Ellis	6 of 11	
P. Elston	8 of 11	
J. Brown	7 of 9	
P. Syson-Harvey	7 of 9	
A. Johnson	7 of 7	
M. Rees	0 of 0	
C. Dickinson (CEO)	11 of 11	(In Attendance)
J. Godolphin (DoO)	1 of 11	(In Attendance)
P. Brooks (DoF)	2 of 11	(In Attendance)

There have been 4 resignations from the Board during the period of review.

Finance, Audit & Risk Committee

The Finance, Audit & Risk Committee is a sub-committee of the Board of Trustees. The purpose of the Committee is to: scrutinise the finances; recommend the auditors for the year to the Board of Trustees; monitor and report on the Trust's Risk Register; and review and report on any audit reports that have been completed. The Finance, Audit & Risk Committee has formally met 6 times during the period. Attendance at meetings of the Committee was as follows:

Name	Attendance	
J. Allan (Chair)(<i>Trustee</i>)	6 of 6	
J. Brown (<i>Trustee</i>)	3 of 4	
P. Elston (<i>Trustee</i>)	3 of 6	
L. Quinn (<i>Trustee</i>)	2 of 6	
A. Johnson (<i>Trustee</i>)	4 of 5	
D. Andrews (<i>Trustee</i>)	3 of 6	(In Attendance)
M. Ellis (<i>Trustee</i>)	1 of 6	(In Attendance)
C. Dickinson (<i>CEO</i>)	6 of 6	(In Attendance)
P. Brooks (<i>Director of Finance</i>)	3 of 3	(In Attendance) (<i>resigned 10/02/23</i>)
J. Coleman (<i>Director of Finance</i>)	3 of 3	(In Attendance) (<i>appointed 01/04/23</i>)
J. Godolphin (<i>Director of Operations</i>)	1 of 6	(In Attendance)

Review of Value for Money

As Accounting Officer, the Chief Executive Officer has responsibility for ensuring that the Kite Academy Trust delivers good value in the use of public resources. The Accounting Officer understands that value for money refers to the educational and wider societal outcomes achieved in return for the taxpayer resources received.

The Accounting Officer considers how the Trust's use of its resources has provided good value for money during each academic year, and reports to the Board of Trustees where value for money can be improved, including the use of benchmarking data where appropriate. The Accounting Officer for the Trust has delivered improved value for money during the year by:

- Using ESFA Benchmarking tools to compare income and expenditure with a similar cohort of primary school MATs to identify areas to review which may generate potential savings;
- Success in securing CIF funding to improve the condition of the Trust's infrastructure (boiler and roofing projects) and keeping our Academies safe (fencing projects)
- Staff pension cost saving resulting from the LGPS pooled MAT fund;
- Generating efficiencies and performing functions in-house (previously procured externally) through the Kite Central Business Team who deliver financial, HR, IT and estate management services across the Trust;
- The gradual replacement of Academy Site Manager posts with Maintenance Technicians working across all Academies to enable a greater focus on Estate Management across the Trust.
- Investment in cloud-based IT systems to enable future growth and centralisation of business systems, e.g. Finance, HR, payroll & Assets;
- Use of government recommended frameworks to deliver value-for-money procurement;
- Investing surplus cash balances on 32-day notice and other term deposits with Lloyds Bank Plc;
- Collaboration of teaching expertise and resources, to deliver the best learning environment and experience for our children;

The Purpose of the System of Internal Control

The system of internal control is designed to manage risk to a reasonable level rather than to eliminate all risk of failure to achieve policies, aims and objectives; it can therefore only provide reasonable and not absolute assurance of effectiveness. The system of internal control is based on an ongoing process designed to identify and prioritise the risks to the achievement of Kite Academy Trust policies, aims and objectives, to evaluate the likelihood of those risks being realised and the impact should they be realised and to manage them efficiently, effectively and economically. The system of internal control has been in place in the Kite Academy Trust for the period 1 September 2022 to 31 August 2023 and up to the date of approval of the Annual Report and Financial Statements.

Capacity to Handle Risk

During 2022/23 the Risk Policy and Risk Register were reviewed by a working party, which resulted in a more streamlined risk register. The Board of Trustees has reviewed the key risks to which the Kite Academy Trust is exposed together with the operating, financial and compliance controls that have been implemented to mitigate those risks. The Board of Trustees is of the view that there is a formal ongoing process for identifying, evaluating and managing the Trust's significant risks, which has been in place for the period 1 September 2022 to 31 August 2023 and up to the date of approval of the Annual Report and Financial Statements.

The Risk & Control Framework

The Kite Academy Trust's system of internal financial control is based on a framework of regular management information and administrative procedures including the segregation of duties and a system of delegation and accountability. In particular, it includes:

- Comprehensive budgeting and monitoring systems with an annual budget and periodic financial reports which are reviewed and agreed by the Board of Trustees;
- Regular reviews by the Finance, Audit & Risk Committee of reports which indicate financial performance against the forecasts and of major purchase plans, capital works and expenditure programmes;
- Setting targets to measure financial and other performance;
- Clearly defined purchasing (asset purchase or capital investment) guidelines;
- Delegation of authority and segregation of duties;
- Identification and management of risks.


The Board of Trustees has considered the need for a specific internal audit function. Following an OFSTED inspection as Wyke Primary Academy safeguarding audits were undertaken by IM Safeguarding Ltd at all Academies to provide reassurance that appropriate arrangements are in place to ensure the safety of all children across the Trust. There were no serious concerns and the recommendations to operating procedures have all been implemented. A cyber security assessment was commissioned during 2022/23 which will take place early in the autumn term 2023. To enhance the risk and control framework an Internal Scrutiny Plan covering the period 2023-2026 was approved by the Trust Board.

Review of Effectiveness

As Accounting Officer, the Chief Executive Officer has responsibility for reviewing the effectiveness of the system of internal control. During the period in question the review has been informed by:

- The work of the internal auditor;
- The work of the external auditor;
- The financial management and governance self-assessment process;
- The work of the Executive Team within the Trust who have responsibility for the development and maintenance of the internal control framework.

Approved by order of the members of the Board of Trustees on 13th December 2023 and signed on their behalf, by:



D. Andrews (Chair)
Chair of Trustees



J. Meek (CEO)
Accounting Officer

STATEMENT ON REGULARITY, PROPRIETY AND COMPLIANCE

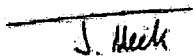
As Accounting Officer of the Kite Academy Trust, I have considered my responsibility to notify the Academy Trust Board of Trustees and the Education and Skills Funding Agency (ESFA) of material irregularity, impropriety and non-compliance with ESFA terms & conditions of funding, under the funding agreement in place between the Kite Academy Trust and the Secretary of State for Education. As part of my consideration I have had due regard to the requirements of the Academies Financial Handbook 2022.

I confirm that I and the Kite Academy Trust Board of Trustees are able to identify any material irregularity or improper use of funds by the Trust, or material non-compliance with the terms and conditions of funding under the Academy Trust's funding agreement and the Academies Financial Handbook 2022.

I confirm that:

- no instances of material irregularity, impropriety or funding non-compliance have been discovered to date.
- During September 2023 we had a confirmed case of RAAC in one of our Academies. We are in the process of arranging remedial works with the ESFA. No other material estate management or site security issues have been discovered to date.

If any instances are identified after the date of this statement, these will be notified to the Board of Trustees and ESFA.



J. Meek (CEO)
Accounting Officer

13th December 2023

STATEMENT OF TRUSTEES' RESPONSIBILITIES

FOR THE YEAR ENDED 31 AUGUST 2023

The Trustees (who act as governors of The Kite Academy Trust and are also the directors of the charitable company for the purposes of company law) are responsible for preparing the Trustees' Report and the Financial Statements in accordance with the Academies Accounts Direction issued by the Education and Skills Funding Agency, United Kingdom Accounting Standards (United Kingdom Generally Accepted Accounting Practice) and applicable law and regulations.

Company law requires the Trustees to prepare Financial Statements for each financial year. Under company law, the Trustees must not approve the financial statements unless they are satisfied that they give a true and fair view of the state of affairs of the charitable company and of its incoming resources and application of resources, including its income and expenditure, for that period. In preparing these Financial Statements, the Trustees are required to:

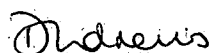
- Select suitable accounting policies and then apply them consistently;
- Observe the methods and principles of the Charities SORP FRS102 and the Annual Accounts Direction 2022 to 2023;
- Make judgments and accounting estimates that are reasonable and prudent;
- Prepare the financial statements on the going concern basis unless it is inappropriate to presume that the charitable company will continue in business.

The Trustees are responsible for keeping adequate accounting records that are sufficient to show and explain the charitable company's transactions and disclose with reasonable accuracy at any time the financial position of the charitable company and enable them to ensure that the financial statements comply with the Companies Act 2006. They are also responsible for safeguarding the assets of the charitable company and hence for taking reasonable steps for the prevention and detection of fraud and other irregularities.

The Trustees are responsible for ensuring that in its conduct and operation the charitable company applies financial and other controls, which conform to the requirements both of propriety and of good financial management. They are also responsible for ensuring grants received from the ESFA/DfE have been applied for the purposes intended.

The Trustees are responsible for the maintenance and integrity of the corporate and financial information included on the charitable company's website. Legislation in the United Kingdom governing the preparation and dissemination of financial statements may differ from legislation in other jurisdictions.

Approved by order of the Board of Trustees and signed on its behalf by:



D. Andrews
Chair of Trustees

13th December 2023

INDEPENDENT AUDITOR'S REPORT ON THE FINANCIAL STATEMENTS FOR THE YEAR ENDED 31 AUGUST 2023

Opinion

We have audited the financial statements of Kite Academy Trust (the 'charitable company') for the year ended 31 August 2023 which comprise the statement of financial activities, the balance sheet, the statement of cash flows, the principal accounting policies and the notes to the financial statements. The financial reporting framework that has been applied in their preparation is applicable law, United Kingdom Accounting Standards, including Financial Reporting Standard 102 'The Financial Reporting Standard applicable in the UK and Republic of Ireland' (United Kingdom Generally Accepted Accounting Practice), Accounting and Reporting by Charities: Statement of Recommended Practice applicable to charities preparing their accounts in accordance with the Financial Reporting Standard applicable in the UK and Republic of Ireland (FRS 102) (the Charities SORP FRS102) and the Academies Accounts Direction 2022 to 2023.

In our opinion, the financial statements:

- give a true and fair view of the state of the charitable company's affairs as at 31 August 2023 and of its income and expenditure, for the period then ended;
- have been properly prepared in accordance with United Kingdom Generally Accepted Accounting Practice;
- have been prepared in accordance with the requirements of the Companies Act 2006; and
- have been prepared in accordance with the Charities SORP FRS102 and Academies Accounts Direction 2022 to 2023.

Basis for Opinion

We conducted our audit in accordance with International Standards on Auditing (UK) (ISAs (UK)) and applicable law. Our responsibilities under those standards are further described in the Auditor's responsibilities for the audit of the financial statements section of our report. We are independent of the charitable company in accordance with the ethical requirements that are relevant to our audit of the financial statements in the UK, including the FRC's Ethical Standard, and we have fulfilled our other ethical responsibilities in accordance with these requirements. We believe that the audit evidence we have obtained is sufficient and appropriate to provide a basis for our opinion.

Conclusions Relating to Going Concern

In auditing the financial statements, we have concluded that the Trustees' use of the going concern basis of accounting in the preparation of the financial statements is appropriate.

Based on the work we have performed, we have not identified any material uncertainties relating to events or conditions that, individually or collectively, may cast significant doubt on the charitable company's ability to continue as a going concern for a period of at least twelve months from when the financial statements are authorised for issue.

Our responsibilities and the responsibilities of the Trustees with respect to going concern are described in the relevant sections of this report.

Other Information

The Trustees are responsible for the other information. The other information comprises the information included in the annual report other than the financial statements and our auditor's report thereon. Our opinion on the financial statements does not cover the other information and, except to the extent otherwise explicitly stated in our report, we do not express any form of assurance conclusion thereon.

In connection with our audit of the financial statements, our responsibility is to read the other information and, in doing so, consider whether the other information is materially inconsistent with the financial statements or our knowledge obtained in the audit or otherwise appears to be materially misstated. If we identify such material inconsistencies or apparent material misstatements, we are required to determine whether there is a material misstatement in the financial statements or a material misstatement of the other information. If, based on the work we have performed, we conclude that there is a material misstatement of this other information, we are required to report that fact.

We have nothing to report in this regard.

Opinion on Other Matters Prescribed by the Companies Act 2006

In our opinion, based on the work undertaken in the course of the audit:

- the information given in the Trustees' report, which is also the Directors' report for the purposes of company law and includes the strategic report, for the financial year for which the financial statements are prepared is consistent with the financial statements; and
- the Trustees' report, which is also the Directors' report for the purposes of company law and includes the strategic report, has been prepared in accordance with applicable legal requirements.

Matters on which we are required to report by Exception

In the light of the knowledge and understanding of the charitable company and its environment obtained in the course of the audit, we have not identified material misstatements in the Trustees' report including the strategic report.

We have nothing to report in respect of the following matters in relation to which the Companies Act 2006 requires us to report to you if, in our opinion:

- adequate accounting records have not been kept, or returns adequate for our audit have not been received from branches not visited by us; or
- the financial statements are not in agreement with the accounting records and returns; or
- certain disclosures of Trustees' remuneration specified by law are not made; or
- we have not received all the information and explanations we require for our audit; or
- the Trustees were not entitled to prepare the financial statements in accordance with the small companies regime and take advantage of the small companies' exemptions in preparing the Trustees' report and from the requirement to prepare a strategic report.

Responsibilities of Trustees

As explained more fully in the Trustees' responsibilities statement, the Trustees (who are also the Directors for the purposes of company law) are responsible for the preparation of the financial statements and for being satisfied that they give a true and fair view, and for such internal control as the trustees determine is necessary to enable the preparation of financial statements that are free from material misstatement, whether due to fraud or error.

In preparing the financial statements, the Trustees are responsible for assessing the charitable company's ability to continue as a going concern, disclosing, as applicable, matters related to going concern and using the going concern basis of accounting unless Trustees either intend to liquidate the charitable company or to cease operations, or have no realistic alternative but to do so.

Auditors' Responsibilities for the Audit of the Financial Statements

Our objectives are to obtain reasonable assurance about whether the financial statements as a whole are free from material misstatement, whether due to fraud or error, and to issue an auditor's report that includes our opinion. Reasonable assurance is a high level of assurance, but is not a guarantee that an audit conducted in accordance with ISAs (UK) will always detect a material misstatement when it exists.

Misstatements can arise from fraud or error and are considered material if, individually or in the aggregate, they could reasonably be expected to influence the economic decisions of users taken on the basis of these financial statements.

Irregularities, including fraud, are instances of non-compliance with laws and regulations. We design procedures in line with our responsibilities, outlined above, to detect material misstatements in respect of irregularities, including fraud. The extent to which our procedures are capable of detecting irregularities, including fraud is detailed below.

Our approach to identifying and assessing the risks of material misstatement in respect of irregularities, including fraud and non-compliance with laws and regulations, was as follows:

- the engagement partner ensured that the engagement team collectively had the appropriate competence, capabilities and skills to identify or recognise non-compliance with applicable laws and regulations;
- we identified the laws and regulations applicable to the charitable company through discussions with management, and from our knowledge of the academy trust sector;
- the identified laws and regulations were communicated within the audit team regularly and the team remained alert to instances of non-compliance throughout the audit;
- we considered the legal and regulatory frameworks that are applicable to the charitable company and determined that the most significant are the Companies Act 2006, the Charities SORP FRS102, the Academies Accounts Direction 2021 to 2022, the Academy Trust Handbook 2021, and the academy trust's funding agreement with the ESFA as well as legislation pertaining to safeguarding in the UK;
- we understood how the charitable company is complying with those legal and regulatory frameworks by making inquiries to management and those responsible for legal, compliance and governance procedures. We corroborated our inquiries through our review of the minutes of trustees' meetings and papers provided to the Trustees.
- we planned and carried out a separate limited assurance engagement in respect of regularity, propriety and compliance in accordance with the Framework and Guide for External Auditors and Reporting Accountants of Academy Trusts issued by the ESFA, as set out in our separate independent reporting accountant's assurance report on regularity.

We assessed the susceptibility of the charitable company's financial statements to material misstatement, including obtaining an understanding of how fraud might occur, by:

- making enquiries of management and those charged with governance as to where they considered there was susceptibility to fraud, their knowledge of actual, suspected and alleged fraud; and
- considering the internal controls in place to mitigate risks of fraud and non-compliance with laws and regulations.

To address the risk of fraud through management bias and override of controls, we:

- performed analytical procedures to identify any unusual or unexpected relationships;
- tested journal entries to identify unusual transactions;
- tested the authorisation of expenditure as part of our substantive testing thereon;
- assessed whether judgements and assumptions made in determining the accounting estimates set out in the accounting policies were indicative of potential bias; and
- used data analytics to identify any significant or unusual transactions and identify the rationale for them.

In response to the risk of irregularities and non-compliance with laws and regulations, we designed procedures which included, but were not limited to:

- agreeing financial statement disclosures to underlying supporting documentation;
- reviewing the minutes of Trustees' meetings;
- enquiring of management and those charged with governance as to actual and potential litigation and claims;
- reviewing any available correspondence with Ofsted, ESFA and HMRC; and

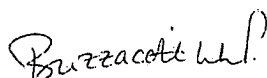
- the work undertaken in relation to the limited assurance engagement in respect of regularity, propriety and compliance in accordance with the Framework and Guide for External Auditors and Reporting Accountants of Academy Trusts issued by the ESFA, as set out in our separate independent reporting accountant's assurance report on regularity.

There are inherent limitations in our audit procedures described above. The more removed that laws and regulations are from financial transactions, the less likely it is that we would become aware of non-compliance. International Standards on Auditing also limit the audit procedures required to identify non-compliance with laws and regulations to enquiry of the Trustees and other management and the inspection of regulatory and legal correspondence, if any.

A further description of our responsibilities for the audit of the financial statements is located on the Financial Reporting Council's website at www.frc.org.uk/auditorsresponsibilities. This description forms part of our auditor's report.

Use of Our Report

This report is made solely to the Trust's Members, as a body, in accordance with Chapter 3 of Part 16 of the Companies Act 2006. Our audit work has been undertaken so that we might state to the Trust's Members those matters we are required to state to them in an Auditors' report and for no other purpose. To the fullest extent permitted by law, we do not accept or assume responsibility to anyone other than the Trust and its Members, as a body, for our audit work, for this report, or for the opinions we have formed.



Shachi Blakemore (Senior Statutory Auditor)
for and on behalf of Buzzacott LLP, Statutory Auditor
130 Wood Street
London
EC2V 6DL

Dated: 18 December 2023

INDEPENDENT REPORTING ACCOUNTANT'S ASSURANCE REPORT ON REGULARITY TO THE KITE ACADEMY TRUST AND THE EDUCATION AND SKILLS FUNDING AGENCY FOR THE YEAR ENDED 31 AUGUST 2023

In accordance with the terms of our engagement letter dated 14 September 2021 and further to the requirements of the Education and Skills Funding Agency (ESFA) as included in the Academies Accounts Direction 2021 to 2022, we have carried out an engagement to obtain limited assurance about whether the expenditure disbursed and income received by The Kite Academy Trust during the period from 1 September 2022 to 31 August 2023 have been applied to the purposes identified by Parliament and the financial transactions conform to the authorities which govern them.

This report is made solely to Kite Academy Trust and the ESFA in accordance with the terms of our engagement letter. Our work has been undertaken so that we might state to Kite Academy Trust and the ESFA those matters we are required to state in a report and for no other purpose. To the fullest extent permitted by law, we do not accept or assume responsibility to anyone other than the Kite Academy Trust and the ESFA, for our work, for this report, or for the conclusion we have formed.

Respective Responsibilities of the Kite Academy Trust's Accounting Officer and the Reporting Accountant

The Accounting Officer is responsible, under the requirements of Kite Academy Trust funding agreement with the Secretary of State for Education and the Academies Financial Handbook, extant from 1 September 2020, for ensuring that expenditure disbursed and income received is applied for the purposes intended by Parliament and the financial transactions conform to the authorities which govern them.

Our responsibilities for this engagement are established in the United Kingdom by our profession's ethical guidance and are to obtain limited assurance and report in accordance with our engagement letter and the requirements of the Academies Accounts Direction 2022 to 2023. We report to you whether anything has come to our attention in carrying out our work which suggests that in all material respects, expenditure disbursed and income received during the period from 1 September 2022 to 31 August 2023 have not been applied to purposes intended by Parliament or that the financial transactions do not conform to the authorities which govern them.

Approach

We conducted our engagement in accordance with the Framework and Guide for External Auditors and Reporting Accountant of Academy Trusts issued by ESFA. We performed a limited assurance engagement as defined in our engagement letter.

The objective of a limited assurance engagement is to perform such procedures as to obtain information and explanations in order to provide us with sufficient appropriate evidence to express a negative conclusion on regularity.

A limited assurance engagement is more limited in scope than a reasonable assurance engagement and consequently does not enable us to obtain assurance that we would become aware of all significant matters that might be identified in a reasonable assurance engagement. Accordingly, we do not express a positive opinion.

Our engagement includes examination, on a test basis, of evidence relevant to the regularity and propriety of the Academy Trust's income and expenditure.

The work undertaken to draw to our conclusion includes:

- An assessment of the risk of material irregularity and impropriety across all of the Academy Trust's activities;
- Further testing and review of the areas identified through the risk assessment including enquiry, identification of control processes and examination of supporting evidence across all areas identified as well as additional verification work where considered necessary; and

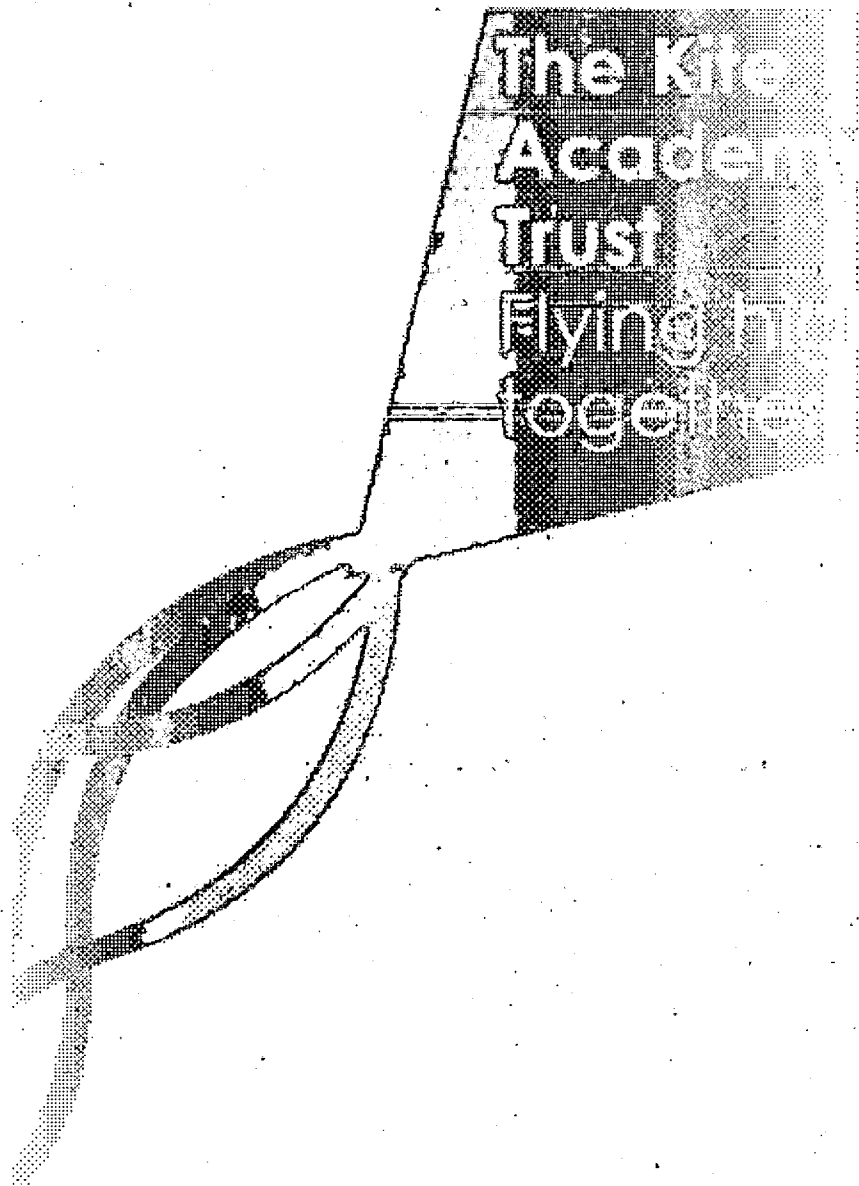
- Consideration of evidence obtained through the work detailed above and the work completed as part of our financial statements audit in order to support the regularity conclusion.

CONCLUSION

In the course of our work, nothing has come to our attention which suggests that in all material respects the expenditure disbursed and income received during the period from 1 September 2022 to 31 August 2023 has not been applied to purposes intended by Parliament and the financial transactions do not conform to the authorities which govern them.

Buzzacott LLP

Buzzacott LLP
Chartered Accountants
130 Wood Street
London
EC2V 6DL
Date: 18 December 2023



STATEMENT OF FINANCIAL ACTIVITIES INCORPORATING INCOME AND EXPENDITURE ACCOUNT

FOR THE YEAR ENDED 31 AUGUST 2023

		Unrestricted Funds 2023 £000	Restricted Funds 2023 £000	Restricted Fixed Asset Fund 2023 £000	Total Funds 2023 £000	Total Funds 2022 £000
Note						
Income from:						
Donations & Capital Grants:	2	58	—	554	612	1,237
Transfer from Local Authority on Conversion Funding for the academy trust's educational operations	2	—	—	—	—	1,644
	3	—	14,002	—	14,002	13,015
Other Income	4	676	—	—	676	622
Investments		13	—	—	13	—
Total Income		747	14,002	554	15,303	16,518
Expenditure on:						
Charitable Activities	6,7,17	193	14,822	11,837	26,851	15,317
Total Expenditure		193	14,822	11,837	26,851	15,317
Net Income/(Expenditure) before Transfers		554	(820)	(11,283)	(11,548)	1,201
Transfers between Funds	17	(387)	491	(104)	—	—
Net Income/(Expenditure) before Other Recognised Gains & Losses		168	(329)	(11,387)	(11,548)	1,201
Actuarial Gains on Defined Benefit Pension Schemes	22	—	1,612	—	1,612	8,755
Net Movement in Funds		167	1,283	(11,387)	(9,937)	9,976
Reconciliation of Funds:						
Total Funds Brought Forward		1,390	(3,019)	49,932	48,303	38,327
Total Funds Carried Forward		1,557	(1,736)	38,546	38,367	48,303

All the Trust's activities relate to continuing operations.

BALANCE SHEET AS AT 31 AUGUST 2023

		2023	2022
	Note	£000	£000
Fixed Assets			
Intangible Assets	13	—	3
Tangible Assets	14	37,868	49,085
		37,868	49,088
Current Assets			
Debtors	15	389	843
Cash at Bank and in Hand	20	3,136	2,336
		3,525	3,179
Liabilities			
Creditors: amounts falling due within one year	16	(1,290)	(945)
Net current assets		2,235	2,234
Total assets less current liabilities		40,103	51,322
Defined Benefit Pension Scheme Liability	22	(1,736)	(3,019)
Total Net Assets		38,367	48,303
Funds of the Trust			
Restricted Funds			
Restricted Fixed Asset Fund	17	38,546	49,932
Restricted income fund	17	—	—
Pension Reserve	17	(1,736)	(3,019)
Total Restricted Funds		36,810	46,913
Unrestricted Income Funds	17		
General fund		1,515	1,390
School funds		42	—
Total Funds		38,367	48,303

The financial statements were approved by the Board of Trustees and authorised for issue on 13th December 2023 and were signed on their behalf by:

D. Andrews

D. Andrews
Chair of Trustees

The notes on pages 30 to 49 form part of these financial statements

STATEMENT OF CASH FLOWS

FOR THE YEAR ENDED 31 AUGUST 2023

	Note	2023 £000	2022 £000
Cash Flows from Operating Activities			
Net Cash provided by (used in) Operating Activities	19	881	(229)
Cash Flows from Investing Activities:			
Sale of Tangible Fixed Assets			
Purchase of Tangible Fixed Assets		(622)	(1,151)
Capital Funding Received from DofE/ESFA		554	1,173
Interest from investments		(13)	
Net Cash (used in) Investing Activities		(81)	(22)
Change in Cash & Cash Equivalents in the Period			
Cash & Cash Equivalents Brought Forward		2,336	2,543
Cash & Cash Equivalents Carried Forward	20	3,136	2,336

NOTES TO THE FINANCIAL STATEMENTS

FOR THE YEAR ENDED 31 AUGUST 2023

1. Accounting Policies

A summary of the principal accounting policies adopted (which have been applied consistently, except where noted), judgements and key sources of estimation uncertainty is set out below.

1.1 Basis of Preparation of Financial Statements

The Financial Statements of the Kite Academy Trust, which is a public benefit entity under FRS 102, have been prepared under the historical cost convention in accordance with the Financial Reporting Standard Applicable in the UK and Republic of Ireland (FRS 102), the Accounting and Reporting by Charities: Statement of Recommended Practice applicable to charities preparing their accounts in accordance with the Financial Reporting Standard applicable in the UK and Republic of Ireland (FRS 102) (Charities SORP (FRS 102)), the Academies Accounts Direction 2022 to 2023 issued by ESFA, the Charities Act 2011 and the Companies Act 2006.

The Kite Academy Trust constitutes a public benefit entity as defined by FRS 102.

1.2 Company Status

The Kite Academy Trust is a company limited by guarantee. The Members of the company are named on page 1. In the event of the Trust being wound up, the liability in respect of the guarantee is limited to £10 per Member of the Trust.

1.3 Fund Accounting

Unrestricted income funds represent those resources which may be used towards meeting any of the charitable objects of the Kite Academy Trust at the discretion of the Trustees.

Restricted fixed asset funds are resources which are to be applied to specific capital purposes imposed by the Department for Education where the asset acquired or created is held for a specific purpose.

Restricted general funds comprise all other restricted funds received with restrictions imposed by the funder and include grants from the Department for Education.

Investment income, gains and losses are allocated to the appropriate fund.

1.4 Income

All income is recognised once the Kite Academy Trust has entitlement to the income, it is probable that the income will be received and the amount of income receivable can be measured reliably.

Grants are included in the Statement of Financial Activities incorporating income and expenditure account on a receivable basis. The balance of income received for specific purposes, but not expended, during the period is shown in the relevant funds on the Balance sheet. Where income is received in advance of entitlement of receipt, its recognition is deferred and included in creditors as deferred income. Where entitlement occurs before income is received, the income is accrued.

Capital grants are recognised in full when there is an unconditional entitlement to the grant. Unspent amounts of capital grants are reflected in the Balance Sheet in the restricted fixed asset fund. Capital grants are recognised when there is an entitlement and are not deferred over the life of the asset on which they are expended. Unspent amounts of capital grant are reflected in the balance in the restricted fixed asset fund.

General Annual Grant is recognised in full in the Statement of Financial Activities incorporating income and expenditure account in the period for which it is receivable and any abatement in respect of the period is deducted from income and recognised as a liability.

Donations are recognised on a receivable basis where there is certainty of receipt and the amount can be reliably measured.

Other income, including the hire of facilities, extended day and nursery fees is recognised in the period in which it is receivable and to the extent the goods have been provided or on completion of the service.

Where assets and liabilities are received by the Trust on conversion to an academy, the transferred assets are measured at fair value and recognised in the Balance Sheet at the point when the risk and rewards of ownership pass to the Trust. An equal amount of income is recognised as a transfer on conversion within Income from donations and capital grants.

1.5 Expenditure

Expenditure is recognised once there is a legal or constructive obligation to transfer economic benefit to a third party, it is probable that a transfer of economic benefits will be required in settlement and the amount of the obligation can be measured reliably. Expenditure is classified by activity. The costs of each activity are made up of the total of direct costs and shared costs, including support costs involved in undertaking each activity. Direct costs attributable to a single activity are allocated directly to that activity. Shared costs which contribute to more than one activity and support costs which are not attributable to a single activity are apportioned between those activities on a basis consistent with the use of resources. Central staff costs are allocated on the basis of time spent and depreciation charges allocated on the portion of the asset's use.

Charitable activities and Governance costs are costs incurred on the Kite Academy Trust's educational operations, including support costs and costs relating to the governance of the Trust apportioned to charitable activities.

All resources expended are inclusive of irrecoverable VAT.

1.6 Going Concern

The Trustees assess whether the use of going concern is appropriate, i.e. whether there are any material uncertainties related to events or conditions that may cast significant doubt on the ability of the Trust to continue as a going concern. The Trustees make this assessment in respect of a period of at least one year from the date of authorisation for issue of the financial statements and have concluded that the Trust has adequate resources to continue in operational existence for the foreseeable future and there are no material uncertainties about the Trust's ability to continue as a going concern, thus they continue to adopt the going concern basis of accounting in preparing the financial statements.

1.7 Intangible Fixed Assets and Amortisation

Intangible assets costing £1,000 or more are capitalised and recognised when future economic benefits are probable and the cost or value of the asset can be measured reliably. Intangible assets are initially recognised at cost and are subsequently measured at cost net of amortisation and any provision for impairment. Amortisation is provided on intangible fixed assets at rates calculated to write off the cost of each asset on a straight-line basis over its expected useful life as follows:

Amortisation is provided at the following rates:

Software	-	20% straight line
----------	---	-------------------

1.8 Tangible Fixed Assets and Depreciation

One or more assets costing more than £1,000 are capitalised.

Where tangible fixed assets have been acquired with the aid of specific grants, either from the government or from the private sector, they are included in the Balance Sheet at cost and depreciated over their expected useful economic life. Where there are specific conditions attached to the funding requiring the continued use of the asset, the related grants are credited to a restricted fixed asset fund in the Statement of financial activities incorporating income and expenditure account and carried forward in the Balance sheet. Depreciation on the relevant assets is charged directly to the restricted fixed asset fund in the Statement of Financial Activities incorporating income and expenditure account. Where tangible fixed assets have been acquired with unrestricted funds, depreciation on such assets is charged to the unrestricted fund.

A review for impairment of a fixed asset is carried out if events or changes in circumstances indicate that the carrying value of any fixed asset may not be recoverable. Shortfalls between the carrying value of fixed assets and their recoverable amounts are recognised as impairments. Impairment losses are recognised in the Statement of Financial Activities incorporating income and expenditure account.

Assets in the course of construction are included at cost. Depreciation on these assets is not charged until they are brought into use.

Tangible fixed assets are carried at cost, net of depreciation and any provision for impairment. Depreciation is not charged on freehold land. Depreciation is provided at rates calculated to write off the cost of fixed assets, less their estimated residual value, over their expected useful lives on the following bases:

Long-term leasehold property	-	2% straight line
Fixtures and fittings	-	10-15% straight line
Motor vehicles	-	20% straight line
Computer equipment	-	33% straight line

1.9 Interest Receivable

Interest on funds held on deposit is included when receivable and the amount can be measured reliably by the Trust; this is normally upon notification of the interest paid or payable by the bank.

1.10 Operating Leases

Rentals under operating leases are charged to the Statement of Financial Activities incorporating income and expenditure account on a straight line basis over the lease term.

1.11 Debtors

Trade and other debtors are recognised at the settlement amount after any trade discount offered. Prepayments are valued at the amount prepaid net of any trade discounts due.

1.12 Cash at Bank and in Hand

Cash at bank and in hand includes cash and short term highly liquid investments with a short maturity three month or less from the date of acquisition or opening of the deposit or similar account.

1.13 Liabilities and Provisions

Liabilities are recognised when there is an obligation at the balance sheet date as a result of a past event, it is probable that a transfer of economic benefit will be required in settlement and the amount of the settlement can be estimated reliably. Liabilities are recognised at the amount that the Trust anticipates it will pay to settle the debt or the amount it has received as advanced payments for the goods or services it must provide.

Provisions are recognised when the Trust has an obligation at the reporting date as a result of a past event which it is probable will result in the transfer of economic benefits and the obligation can be estimated reliably. Provisions are measured at the best estimate of the amounts required to settle the obligation. Where the effect of the time value of money is material, the provision is based on the present value of those amounts, discounted at the pre-tax discount rate that reflects the risks specific to the liability. The unwinding of the discount is recognised within interest payable and similar charges.

1.14 Financial Instruments

The Trust only holds basic financial instruments as defined in FRS 102. The financial assets and financial liabilities of the Trust and their measurement basis are as follows:

Financial assets – trade and other debtors are basic financial instruments and are debt instruments measured at amortised cost. Prepayments are not financial instruments.

Cash at bank – is classified as a basic financial instrument and is measured at face value.

Financial liabilities – trade creditors, accruals and other creditors are financial instruments and are measured at amortised cost. Taxation and social security are not included in the financial instruments disclosure definition. Deferred income is not deemed to be a financial liability, as the cash settlement has already taken place and there is an obligation to deliver services rather than cash or another financial instrument.

1.15 Taxation

The Trust is considered to pass the tests set out in Paragraph 1 Schedule 6 of the Finance Act 2010 and therefore it meets the definition of a charitable company for UK corporation tax purposes. Accordingly, the Trust is potentially exempt from taxation in respect of income or capital gains received within categories covered by Chapter 3 Part 11 of the Corporation Tax Act 2010 or Section 256 of the Taxation of Chargeable Gains Act 1992, to the extent that such income or gains are applied exclusively to charitable purposes.

1.16 Pensions

Retirement benefits to employees of the Kite Academy Trust are provided by the Teachers' Pension Scheme (TPS) and the Local Government Pension Scheme (LGPS). These are defined benefit schemes.

The TPS is an unfunded scheme and contributions are calculated so as to spread the cost of pensions over employees' working lives with the Trust in such a way that the pension cost is a substantially level percentage of current and future pensionable payroll. The contributions are determined by the Government Actuary on the basis of quadrennial valuations using a prospective unit credit method. As stated in note 22, the TPS is an unfunded multi-employer scheme with no underlying assets to assign between employers. Consequently, the TPS is treated as a defined contribution scheme for accounting purposes and the contributions recognised in the period to which they relate.

The LGPS is a funded multi-employer scheme and the assets are held separately from those of the Trust in separate trustee administered funds. Pension scheme assets are measured at fair value and liabilities are measured on an actuarial basis using the projected unit credit method and discounted at a rate equivalent to the current rate of return on a high-quality corporate bond of equivalent term and currency to the liabilities. The actuarial valuations are obtained at least triennially and are updated at each balance sheet date. The amounts charged to operating surplus are the current service costs and the costs of scheme introductions, benefit changes, settlements and curtailments. They are included as part of staff costs as incurred. Net interest on the net defined benefit liability/asset is also recognised in the Statement of Financial Activities incorporating income and expenditure account and comprises the interest cost on the defined benefit obligation and interest income on the scheme assets, calculated by multiplying the fair value of the scheme assets at the beginning of the period by the rate used to discount the benefit obligations. The difference between the interest income on the scheme assets and the actual return on the scheme assets is recognised in other recognised gains and losses.

Actuarial gains and losses are recognised immediately in other recognised gains and losses.

1.17 Critical Accounting Estimates and Areas of Judgement

Estimates and judgements are continually evaluated and are based on historical experience and other factors, including expectations of future events that are believed to be reasonable under the circumstances.

The Kite Academy Trust makes estimates and assumptions concerning the future. The resulting accounting estimates and assumptions will, by definition, seldom equal the related actual results. The estimates and assumptions that have a significant risk of causing a material adjustment to the carrying amounts of assets and liabilities within the next financial year are discussed below.

The present value of the Local Government Pension Scheme defined benefit liability depends on a number of factors that are determined on an actuarial basis using a variety of assumptions. The assumptions used in determining the net cost (income) for pensions include the discount rate. Any changes in these assumptions, which are disclosed in note 22, will impact the carrying amount of the pension liability. Furthermore, a roll forward approach, which projects results from the latest full actuarial valuation performed at 31 March 2022, has been used by the actuary in valuing the pensions liability at 31 August 2023. Any differences between the figures derived from the roll forward approach and a full actuarial valuation would impact on the carrying amount of the pension liability.

2. Income from Donations and Capital Grants

	Unrestricted Funds 2023 £000	Restricted Funds 2023 £000	Restricted Fixed Asset Fund 2023 £000	Total Funds 2023 £000	Total Funds 2022 £000
Donated Fixed Assets	—	—	—	—	1,173
Other donations	58	—	—	58	64
Transferred on conversion	—	—	—	—	1,644
Capital Grants	—	—	—	—	—
Total Donations & Capital Grants	58	—	554	612	2,881

	Unrestricted Funds 2022 £000	Restricted Funds 2022 £000	Restricted Fixed Asset Fund 2022 £000	Total Funds 2022 £000
Donated fixed assets	—	—	1,173	1,173
Other donations	64	—	—	64
Transferred on conversion	76	(234)	1,802	1,644
Capital grants	—	—	—	—
Total 2022 donations & Capital Grants	140	(234)	2,975	2,881

3. Funding for the Kite Academy Trust's Educational Operations

	Unrestricted Funds 2023 £000	Restricted Funds 2023 £000	Total Funds 2023 £000	Total Funds 2022 £000
DfE/EFSA Grants				
General Annual Grant (GAG)	—	11,045	11,045	10,617
Other EFSA/DfE Grants				
Universal Infant Free School Meals	—	372	372	340
Pupil Premium	—	629	629	584
Others	—	756	756	320
	—	12,802	12,802	11,861
Other Government Grants				
Local Authority grants	—	1,061	1,061	1,013
	—	1,061	1,061	1,013
Exceptional government funding				
Recovery/Catch up premium	—	67	67	61
Other ESFA/DfE Coronavirus grants	—	54	54	52
		121	121	113
Other Income from the Trust's Educational Operations				
Other Income	—	18	18	28
Total 2023 Funding for Educational Operations	—	14,002	14,002	13,015

During the year, the Kite Academy Trust received income of £67,000 relating to recovery premium (2022 – £61,000). The full amount has been spent in the year. The Kite Academy Trust also received National Tutoring Programme funding totalling £58,000 (2022 – £84,000) and spent £49,000 (2022 – £52,000). Under the terms of the funding, unspent funds are subject to clawback therefore £9,000 has been recognised in deferred income.

4. Other Trading Activities

	2023 Total funds £000	2022 Total funds £000
Hire of facilities	86	88
Income from other charitable activities	434	423
Income from ancillary trading activities	156	111
	676	622

All trading activities income was unrestricted in both 2023 and 2022.

5. Investment Income

	Total Funds 2023 £000	Total Funds 2022 £000
Short Term Deposits	13	—

Investment income is unrestricted.

6. Expenditure

	Non-pay expenditure			Total funds 2023 £000
	Staff costs £000	Premises £000	Other costs £000	
Academy's educational operations:				
Direct costs	7,500	11,840	514	19,854
Allocated support costs	4,512	1,061	1,424	6,997
	12,012	12,901	1,938	26,851

Direct costs include an impairment value of £11.3 million which relates to Cross Farm, The Grove, Hale, Holly Lodge, Folly Hill, Lakeside and Wyke Academies and is outlined in note 14.

	Non-pay expenditure			2022 Total funds £'000
	Staff costs £'000	Premises £'000	Other costs £'000	
Academy Trust's educational operations:				
Direct costs	6,948	560	438	7,946
Allocated support costs	5,374	804	1,193	7,371
	12,322	1,364	1,631	15,317

	2023 £000	2022 £000
Net income (expenditure) for the period includes:		
Operating lease rentals	43	33
Impairment	11,285	—
Depreciation	552	553
Amortisation	3	3
Fees payable to auditor	—	—
Current year statutory audit	34	26
Prior year statutory audit	—	10
Other services	—	—

The impairment value of £11.3 million relates to Cross Farm, The Grove, Hale, Holly Lodge, Folly Hill, Lakeside and Wyke Academies. This impairment charge is outlined in note 14 and is the difference between the net book value brought forward and the most recent ESFA valuation.

7. Charitable Activities - Academy Trust's Educational Operations

	Total 2023 £000	Total 2022 £000
Direct Costs	19,854	7,946
Support Costs	6,997	7,371
	26,851	15,317

	2023 Total funds £000	2022 Total funds £000
Analysis of support costs		
Support staff costs	4,512	5,374
Technology costs	194	212
Premises costs	1,061	804
Legal costs – other	—	22
Other support costs	1,186	908
Governance costs	44	51
Total support costs	6,997	7,371

8. Staff Costs

	2023 £000	2022 £000
Wages & Salaries	8,961	8,458
Social Security Costs	707	680
Operating Costs of Defined Benefit Pension Schemes	2,173	3,126
	11,841	12,264
Supply Teacher Costs	169	58
Staff restructuring costs	2	—
	12,012	12,322

Kite Academy Trust did not make any settlements within a compromise agreement in 2023 (2022 – £nil).

The average number of persons employed by the Kite Academy Trust:

HEADCOUNT	2023	2022
Teachers	136	128
Administration	227	231
Management	15	18
	378	377

8. Staff Costs (continued)

The number of employees whose employee benefits (excluding employer pension costs) exceeded £60,000 was:

	2023	2022
In band £60,001 - £70,000	5	8
In band £70,001 - £80,000	3	—
In band £80,001 - £90,000	2	2
In band £90,001 - £100,000	1	1

11 of the above employees participated in the Teachers' Pension Scheme with three participating in the LGPS.

During the period ended 31 August 2023, pension contributions to the Teachers' Pension Scheme for these staff amounted to £172,000 (2022: £166,000) and pension contributions to the LGPS for these staff amounted to £28,000 (2022: £14,000).

Key management comprise the Senior Leadership Team.

During the period the ended 31 August 2023 the aggregate key management personnel remuneration (including employer pension and N.I. contributions) was £1,517,000 (2022: £1,470,000).

9. Central Services

The Kite Academy Trust has provided the following central services to its academies during the period:

- Legal Services;
- Financial Services;
- Chief Executive Services;
- HR Services;
- Estate Management;
- IT Services;
- GDPR Compliance

To fund these services the Trust operates a GAG pooling model, therefore no specific charges were made during the year.

10. Trustees' and Officers' Insurance

The Kite Academy Trust has opted into the Department for Education's Risk Protection Arrangement (RPA), an alternative to insurance where the UK Government funds cover losses that arise. This scheme protects Trustees and Officers from claims arising from negligent acts, errors or omissions occurring whilst on Trust business and provides cover up to £10,000,000. It is not possible to quantify the Trustees and Officers indemnity element from the overall cost of the RPA scheme.

11. Trustees' & Members Remuneration and Expenses

The Chief Executive Officer has been paid remuneration or has received other benefits from an employment with the Kite Academy Trust. They only receive remuneration in respect of services they provide undertaking the role of Chief Executive Officer under their contract of employment.

During the period ended 31 August 2023, there were no Trustee expenses reimbursed or paid directly to any Trustee (2022: nil). One member was paid £39 travel expenses to attend a meeting at Holly Lodge Academy (2022: £nil).

12. Other Finance Income

	Surrey £000	Hampshire £000	2023 Total £000	2022 Total £000
Interest Income on Pension Scheme Assets	368	14	382	142
Interest on Pension Scheme Liabilities	(498)	(16)	(514)	(321)
	(130)	(2)	(132)	(179)

13. Intangible Fixed Assets

Cost	Software £000
At 1st September 2022	51
Additions	—
At 31st August 2023	51
Amortisation	
At 1st September 2022	48
Charge for the Period	3
At 31st August 2023	51
Carrying Amount	
At 31st August 2023	—
At 31st August 2022	3

14. Tangible Fixed Assets

	Long-Term Leasehold Property £000	Asset Under Construction £000	Fixtures & Fittings £000	Computer Equipment £000	Motor Vehicles £000	Total Fixed Assets £000
Cost						
At 1 September 2022	50,833	563	96	520	13	52,026
Additions	320	176	44	76	6	622
Transfer	394	(394)	—	—	—	—
As at 31 August 2023	51,551	345	141	596	19	52,648
Depreciation						
At 1 September 2022	2,551	—	36	344	13	2,944
Charge for the Period	465	—	14	72	1	552
Impairment	11,285	—	—	—	—	11,285
As at 31 August 2023	14,301	—	50	416	14	14,781
Net Book Value						
As at 31 August 2023	37,250	345	91	180	6	37,868
As at 31st August 2022	48,286	563	60	176	—	49,085

The land and buildings at Folly Hill Infant Academy are held under a 125-year lease agreement with Surrey County Council commencing on 1st March 2022 at nil cost.

The land and buildings at Hale Nursery & Primary Academy are held under a 125-year lease agreement with Surrey County Council commencing on 1st October 2019 at nil cost.

The land and buildings at The Ferns Primary Academy are held under a 125-lease agreement with Hampshire County Council commencing 1st June 2019 at nil cost.

The land and buildings at Wyke Primary Academy are held under a 125-lease agreement with Hampshire County Council commencing 31st July 2018 at nil cost.

The land and buildings at Holly Lodge Primary Academy are held under a 125-lease agreement with Hampshire County Council commencing 1st December 2016 at nil cost.

The land and buildings at the remaining academies are held under 125-year lease agreements with Surrey County Council commencing 1st October 2015 at nil cost.

The impairment value of £11.3 million relates to Cross Farm, The Grove, Hale, Holly Lodge, Folly Hill, Lakeside and Wyke Academies. This impairment charge is the difference between the net book value brought forward and the most recent ESFA valuations.

Included in land and buildings is leasehold land valued at £20.8 million which is not depreciated

15. Debtors

	2023	2022
	£000	£000
Trade Debtors	7	72
VAT Repayable	65	150
Prepayments & Accrued Income	317	691
	389	843

16. Creditors: Amounts falling due within one year

	2023	2022
	£000	£000
Trade Creditors	335	45
Other Taxation & Social Security	187	169
Other Creditors	250	235
Accruals & Deferred Income	516	496
	1,288	945

Deferred Income

	£000
Deferred Income at 1st September 2022	324
Resources Deferred during the Year	(324)
Amounts Released from Previous Year	382
Deferred Income at 31st August 2023	382

Deferred income includes Universal Free School Meals funding for 2023/24 of £228,000 (2022: £201,000); DFC funding for 2023/24 of £69,000 (2022: 64,000); Sports Premium funding for 2022/23 of £26,000 (2022: nil); and other deferred income for 2023/24 £59,000 (2022: £59,000).

17. Statement of Funds 2022 – 2023

	2022	2023	2023	2023	2023
	Brought Forward	Income	Expenditure	Gains/ (Losses) & Transfers	Carried Forward
	£000	£000	£000	£000	£000
Unrestricted Funds					
General Fund	1,390	747	(193)	(429)	1,515
School Funds	—	—	—	42	42
	<u>1,390</u>	<u>747</u>	<u>(193)</u>	<u>(387)</u>	<u>1,557</u>
Restricted Funds					
Restricted Donations					
General Annual Grant (GAG)	—	11,045	(11,536)	491	—
Other EFA/DfE Grants					
UIFSM	—	372	(372)	—	—
Catch-up Premium	—	67	(67)	—	—
National Tutoring Program	—	54	(54)	—	—
Pupil Premium	—	629	(629)	—	—
Other grants	—	756	(756)	—	—
Pension Reserve	(3,019)	—	(329)	1,612	(1,736)
	<u>(3,019)</u>	<u>12,923</u>	<u>(13,743)</u>	<u>2,103</u>	<u>(1,736)</u>
Other restricted grants					
Local authority grants	—	1,061	(1,061)	—	—
Other restricted grants	—	18	(18)	—	—
	<u>—</u>	<u>1,079</u>	<u>(1,079)</u>	<u>—</u>	<u>—</u>
Restricted Fixed Asset Fund					
Assets Inherited on Conversion	47,318	—	(11,285)	—	36,033
DfE/ESFA capital grants	1,515	554	(552)	—	1,518
Capital expenditure from GAG	425	—	—	(104)	321
S106 Funding	674	—	—	—	674
	<u>49,932</u>	<u>554</u>	<u>(11,837)</u>	<u>(104)</u>	<u>38,546</u>
Total Restricted Funds	<u>46,913</u>	<u>14,556</u>	<u>(26,659)</u>	<u>1,999</u>	<u>36,810</u>
Total Funds	<u>48,303</u>	<u>15,303</u>	<u>(26,851)</u>	<u>1,612</u>	<u>38,367</u>

17. Statement of Funds 2022 – 2023 (continued)

Comparative Statement of Funds 2021 – 2022

	2021	2022	2022	2022	2022
	Brought Forward	Income	Expenditure	Gains/ (Losses) & Transfers	Carried Forward
	£000	£000	£000	£000	£000
Unrestricted Funds					
General Fund	1,050	784	(174)	(270)	1,390
	1,050	784	(174)	(270)	1,390
Restricted Funds					
Restricted Donations					
General Annual Grant (GAG)	—	10,617	(10,815)	198	—
Other EFA/DfE Grants	—	—	—	—	—
UIFSM	—	340	(340)	—	—
Catch-up Premium	—	61	(61)	—	—
Other ESFA covid grants	—	52	(52)	—	—
Pupil Premium	—	584	(584)	—	—
Other grants	—	320	(320)	—	—
Pension Reserve	(10,168)	(234)	(1,392)	8,775	(3,019)
	(10,168)	11,740	(13,564)	8,973	(3,019)
Other restricted grants					
Local authority grants	—	1,013	(1,013)	—	—
Other restricted grants	—	6	(6)	—	—
	—	1,019	(1,019)	—	—
Restricted Fixed Asset Fund					
Assets Inherited on Conversion	45,516	1,802	—	—	47,318
DfE/ESFA capital grants	902	1,173	(560)	—	1,515
Capital expenditure from GAG	353	—	—	72	425
S106 Funding	674	—	—	—	674
	47,445	2,975	(560)	72	49,932
Total Restricted Funds	37,277	15,734	15,143	9,045	46,913
Total Funds	38,327	16,518	(15,317)	8,775	48,303

Reserves - The Trust Board has decided that all reserves are held in a central fund and will be available to fund projects identified to the Trustee panel. All successful projects must make a valuable impact on the children.

The specific purposes for which the funds are to be applied are as follows:

Restricted Funds

The General Annual Grant (GAG) represents the core funding for the educational activities of the academy that has been provided to the Trust via the Education and Skills Funding Agency by the Department for Education. The General Annual Grant has been set up because the GAG must be used for the normal running costs of the Trust.

17. Statement of Funds 2022 – 2023 (continued)

Under the funding agreement with the Secretary of State, the academies in the Trust are not subject to a limit on the amount of GAG that it could carry forward at 31 August 2023.

Other Restricted Funds relates to funding provided for specific areas of the Trust's activities including capital funding, pupil premium, local authority grants, start-up grants for new schools joining the Trust and school improvement funding.

The Pension Reserve Fund has been created to separately identify the LGPS pension deficit inherited from the local authority upon conversion to Multi Academy Trust status and through which all the pension scheme movements are recognised.

Restricted Fixed Asset Funds

The inherited fixed assets fund has been set up to recognise the tangible assets gifted to the Trust upon conversion which represent the academy site including the freehold land and buildings and all material items of plant and machinery included therein. Depreciation charged on those inherited assets is allocated to the fund.

Other capital funding and specific donations recognise the tangible assets purchased with those funds and the relevant depreciation charges on those assets is allocated to the funds. The S106 fund will be used for expansion works to meet the increased intake of pupils at the affected schools.

Analysis of Academies by Fund Balance

The Trust Board has decided that all reserves are held in a central fund and will be available to fund projects identified to the Trustee panel. All successful projects must make a valuable impact on the children.

Analysis of Academies by Cost

Expenditure incurred by each Academy during the year:

	Teaching and educational support staff costs 2023 £000	Other support staff costs 2023 £000	Educational supplies 2023 £000	Other costs (excluding depreciation) 2023 £000	Total 2023 £000
Cross farm	419	213	34	91	757
The Ferns	630	292	68	84	1,074
The Grove	463	315	41	115	934
Hale	1,036	599	68	170	1,873
Holly Lodge	967	540	77	182	1,766
Lakeside	910	437	62	171	1,580
Mytchett	603	268	48	133	1,052
Sandringham	910	529	61	173	1,673
Wyke	488	262	18	79	847
Folly Hill	297	151	17	55	520
Central services	618	1,065	18	1,231	2,932
	<u>7,341</u>	<u>4,671</u>	<u>512</u>	<u>2,484</u>	<u>15,008</u>

18. Analysis of Net Assets between Funds

	Unrestricted Funds 2023 £000	Restricted Funds 2023 £000	Restricted Fixed Asset Fund 2023 £000	Total Funds 2023 £000	Total Funds 2022 £000
Tangible Fixed Assets	—	—	37,868	37,868	49,088
Current Assets	1,558	1,290	678	3,525	3,179
Creditors Due within One Year	—	(1,290)	—	(1,290)	(945)
Provisions for Liabilities & Charges	—	(1,736)	—	(1,736)	(3,019)
Total Net Assets between Funds	1,558	(1,736)	38,546	38,367	48,303

19. Reconciliation of Net Movement in Funds to Net Cash Flow from Operating Activities

Net (Expenditure) Income for the Year (as per Statement of Financial Activities)

Adjustment for:**Inherited pension deficit**

Inherited tangible assets	—	(1,800)
Impairment, Depreciation & amortisation charges	11,840	560
Interest receivable	13	—
Decrease (Increase) in Debtors	459	(438)
Decrease (Increase) in Creditors	343	(205)
Capital Grants from DfE & Other Capital Income	(554)	(1,173)
Defined benefit pension scheme cost less contributions	196	479
Defined benefit pension scheme finance cost	132	179
Net Cash provided by (used in) by Operating Activities	881	(229)

20. Analysis of Cash and Cash Equivalents

	2023 £000	2022 £000
Cash in Hand	3,136	2,336
Notice Deposits (more than 3 months)	—	—
Total	3,136	2,336

21. Analysis of Changes in Net Debt

	At 1 September 2022 £000	Cash flows £000	Other non- cash changes £000	At 31 August 2023 £000
Cash	2,336	800	—	3,136
Total	2,336	800	—	3,136

22. Pension Commitments

The Kite Academy Trust's employees belong to two principal pension schemes: the Teacher's Pension Scheme England and Wales (TPS) for academic and related staff; and the Local Government Pension Scheme (LGPS) for non-teaching staff, which is managed by Surrey County Council. Both are multi-employer defined benefit pension schemes.

The latest actuarial valuation of the TPS related to the period ended 31 March 2020 and of the LGPS 31 March 2022. Contributions amounting to £224,000 were payable to the schemes at 31 August 2023 (2022: £214,000) and are included in creditors.

Teachers' Pension Scheme

The Teachers' Pension Scheme (TPS) is a statutory, contributory, defined benefit scheme, governed by the Teachers' Pension Scheme Regulations 2014. Membership is automatic for full-time teachers in academies. All teachers have the option to opt-out of the TPS following enrolment.

The TPS is an unfunded scheme to which both the member and employer makes contributions, as a percentage of salary – these contributions are credited to the Exchequer. Retirement and other pension benefits are paid by public funds and provided by Parliament.

Valuation of the Teachers' Pension Scheme

The Government Actuary, using normal actuarial principles, conducts a formal actuarial review of the TPS in accordance with the Public Service Pensions (Valuations and Employer Cost Cap) Directions 2014 published by HM Treasury every 4 years. The aim of the review is to specify the level of future contributions. Actuarial scheme valuations are dependent on assumptions about the value of future costs, design of benefits and many other factors. The latest actuarial valuation of the TPS was carried out as at 31 March 2020. The valuation report was published by the Department for Education in October 2023. The main outcomes are as follows:

- Total scheme liabilities (pensions currently in payment and the estimated cost of future benefits) for as at 31st March 2020 of £262 billion and notional assets (estimated future contributions together with the notional investments held) of £222 billion giving a scheme deficit of £39.8 billion as at 31st March 2020.
- An increased Employer Contribution Rate – where employer contributions will be increasing by 5% to 28.6% of pensionable pay next April 2024. A levy of 0.08% of pensionable pay is also payable by employers in order to meet the cost of administering the scheme
- No changes to individual employee contributions – this means members will continue to pay the same % into their pension scheme for 2023/24, with employee contributions staying the same until 1 April 2025

The employer's pension costs paid to the TPS in the period amounted to £1,271,000 (2022: £1,212,000).

A copy of the valuation report and supporting documentation is on the Teachers' Pensions website.

Under the definitions set out in FRS 102, the TPS is an unfunded multi-employer pension scheme. The Academy Trust has accounted for its contributions to the scheme as if it were a defined contribution scheme. The Trust has set out above the information available on the scheme.

Local Government Pension Scheme

The LGPS is a funded defined benefit scheme, with assets held in separate trustee administered funds. The total contribution made for the year ended 31 August 2023 was £905,000 (2022: £886,000), of which employer's contributions totalled £709,000 (2022: £698,000) and employees' contributions totalled £196,000 (2022: £188,000). The agreed contribution rates for future years are 17.9% (Hampshire) and 21.9% (Surrey) for employers and 5.5% - 12.5% for employees.

Parliament has agreed, at the request of the Secretary of State for Education, to a guarantee that in the event of Multi Academy Trust closure, outstanding Local Government Pension Scheme liabilities would be met by the Department for Education. The guarantee came into force on 18 July 2013.

22. Pension Commitments (continued)

Principal Actuarial Assumptions

	Surrey 2023 %	Surrey 2022 %	Hampshire 2023 %	Hampshire 2022 %
Discount Rate for Scheme Liabilities	5.2	4.2	5.2	4.1
Rate of Increase in Salaries	4.0	3.9	4.0	3.7
Rate of Increase for Pensions in Payment/Inflation	3.0	3.0	3.0	2.7
Inflation Assumption (CPI)	3.0	3.0	3.0	2.7

The current mortality assumption includes sufficient allowance for future improvements in mortality rates. The assumed life expectations on retirement age 65 are:

	Surrey 2023	Surrey 2022	Hampshire 2023	Hampshire 2022
Retiring Today:				
Males	19.4	22.1	22.1	22.9
Females	23.7	24.5	24.7	25.4
Retiring in 20 Years:				
Males	21.1	23.1	22.6	24.7
Females	26.0	26.2	25.7	27.1

The sensitivities regarding the principal assumptions used to measure the scheme liabilities are set out below:

Change in Assumptions at 31 August 2023	Approximate Increase to Defined Benefit Obligation (Surrey)	Approximate Monetary Amount (Surrey)	Approximate Increase to Defined Benefit Obligation (Hampshire)	Approximate Monetary Amount (Hampshire)
	%	£000	%	£000
0.1% decrease in Real Discount Rate	2%	251	2%	9
0.1% increase in Salary Increase Rate	0%	16	0%	1
0.1% increase in Pension Increase Rate	2%	240	2%	8
1 year increase in Life Expectancy	4%	442	4%	14
Change in Assumptions at 31 August 2022	Approximate Increase to Defined Benefit Obligation (Surrey)	Approximate Monetary Amount (Surrey)	Approximate Increase to Defined Benefit Obligation (Hampshire)	Approximate Monetary Amount (Hampshire)
	%	£000	%	£000
0.1% decrease in Real Discount Rate	2%	268	2%	8
0.1% increase in Salary Increase Rate	0%	14	0%	1
0.1% increase in Pension Increase Rate	2%	256	2%	7
1 year increase in Life Expectancy	4%	452	4%	10

22. Pension Commitments (continued)

The Trust's share of the assets in the scheme was:

	Fair Value at 31 August 2023 (Surrey) £000	Fair Value at 31 August 2023 (Hampshire) £000	Fair Value at 31 August 2022 (Surrey) £000	Fair Value at 31 August 2022 (Hampshire) £000
Equities	7,087	205	6,325	183
Debt Instruments	1,119	111	1,165	48
Property	746	21	666	25
Cash	373	10	166	3
Other	—	—	—	58
Total Market Value of Assets	9,325	348	8,322	317
Present value of scheme liabilities	11,049	360	(11,293)	(365)
Deficit in the scheme	(1,724)	(12)	(2,971)	(48)

The amounts recognised in the Statement of Financial Activities incorporating Income and Expenditure Account are as follows:

	Surrey 2023 £000	Surrey 2022 £000	Hampshire 2023 £000	Hampshire 2022 £000
Current Service Cost	(849)	(1,849)	(57)	(54)
Interest Income	368	136	14	6
Interest cost	(498)	(311)	(16)	(10)
Inherited on conversion	—	(234)	—	—
Total	(979)	(2,258)	(59)	(58)

Movements in the present value of the defined benefit obligations were as follows:

	Surrey 2023 £000	Surrey 2022 £000	Hampshire 2023 £000	Hampshire 2022 £000
Opening Defined Benefit Obligation	11,293	17,684	365	606
Inherited on conversion	—	377	—	—
Current Service Cost	849	1,849	57	61
Interest Cost	498	311	16	10
Contributions by Employees	184	181	12	7
Actuarial (gain) loss	(1,633)	(9,026)	(88)	(307)
Changes and Assumptions	—	—	—	—
Benefits Paid	(142)	(83)	(2)	(12)
	11,049	11,293	360	365

Movements in the fair value of the Trust's share of scheme assets were as follows:

	Surrey 2023 £000	Surrey 2022 £000	Hampshire 2023 £000	Hampshire 2022 £000
Opening Fair Value of Scheme Assets	8,322	7,797	317	326
Upon Conversion	—	143	—	—
Interest income	368	135	14	6
Return on Plan Assets	(74)	(529)	(35)	(29)
Employer Contributions	667	678	42	19
Employee Contributions	184	181	12	7
Benefits Paid	(142)	(83)	(2)	(12)
	9,325	8,322	348	317

23. Operating Lease Commitments

At 31 August 2023, the total of the Kite Academy Trust's future minimum lease payment under non-cancellable operating leases was:

	2023 £000	2022 £000
Amounts Payable:		
Within 1 Year	15	39
Between 2 and 5 Years	32	64
Total	47	103

24. Capital Commitments

At year end, there were £94,000 (2022: £168,000).

25. Members' Liability

Each member of the charitable company undertakes to contribute to the assets of the company in the event of it being wound up while he/she is a member, or within one year after he/she ceases to be a member, such amount as may be required, not exceeding £10 for the debts and liabilities contracted before he/she ceases to be a member.

26. Related Party Transactions

Owing to the nature of the Kite Academy Trust's operations and the composition of the Board of Trustees being drawn from local public and private sector organisations, transactions may take place with organisations in which the Trust has an interest. All transactions involving such organisations are conducted at arm's length and in accordance with the Trust financial regulations and normal procurement procedures.

E. Young, daughter of S. Young, a Governor at The Grove Primary Academy, is employed by the academy trust as a teacher. E. Young's appointment predates the appointment of S. Young as a Governor. E. Young is paid within the normal pay scale for her role and receives no special treatment as a result of her relationship to a Governor.

K. Ayre, daughter of I. Ayre, a Governor at Hale Nursery & Primary Academy, is employed by the academy trust as a teacher. K. Ayre's appointment predates the appointment of I. Ayre as a Governor. K. Ayre is paid within the normal pay scale for her role and receives no special treatment as a result of her relationship to a Governor.

B. Brown, sister-in-law of M. Lyons, a Governor at Holly Lodge Primary Academy, is employed by the academy trust as a learning support assistant. B. Brown's appointment predates the appointment of M. Lyons as a Governor. B. Brown is paid within the normal pay scale for her role and receives no special treatment as a result of her relationship to a Governor.

L. Cope, wife of S. Cope, a Governor at Mytchett Primary & Nursery Academy, is employed by the academy trust as a learning support assistant. L. Cope's appointment predates the appointment of S. Cope as a Governor. L. Cope is paid within the normal pay scale for her role and receives no special treatment as a result of her relationship to a Governor.

27. Legal Status

The Kite Academy Trust is an incorporated exempt charity registered in England and Wales. The principal office is located at Holly Lodge Primary Academy, Stratford Road, Ash Vale, Surrey GU12 5PX.

**28. Statement of Financial Activities incorporating Income and Expenditure Account
(for the year ended 31 August 2022)**

		Unrestricted Funds 2022 £000	Restricted Funds 2022 £000	Restricted Fixed Asset Fund 2022 £000	Total Funds 2022 £000
	Note				
Income from:					
Donations & Capital Grants:	2	64	—	1,173	1,237
Transfer from Local Authority on Conversion	2	76	(234)	1,802	1,644
Funding for the academy trust's educational operations	3	22	12,993	—	13,015
Other Trading Activities	4	622	—	—	622
Total Income		784	12,759	2,975	16,518
Expenditure on:					
Charitable Activities	6,7,17	174	14,583	560	15,317
Total Expenditure		174	14,583	560	15,317
Net Income/(Expenditure) before Transfers		610	(1,824)	2,415	1,201
Transfers between Funds	19	(270)	198	72	—
Net Income/(Expenditure) before Other Recognised Gains & Losses		340	(1,626)	2,487	1,201
Actuarial Gains (Losses) on Defined Benefit Pension Schemes	23	—	8,775	—	8,755
Net Movement in Funds		340	7,149	2,487	9,976
Reconciliation of Funds:					
Total Funds Brought Forward		1,050	(10,168)	47,445	38,327
Total Funds Carried Forward		1,390	(3,019)	49,932	48,303