

2.17B

The Insolvency Act 1986

Statement of administrator's proposals

Name of Company

LPW Truckwash (MSA) Limited

Company number

04257749

In the
High Court of Justice

(full name of court)

Court case number
21630 of 2009(a) Insert full
name(s) and
address(es) of
administrator(s)

I/We (a)
 P R Boyle
 Harrisons
 4 St Giles Court
 Southampton Street
 Reading
 RG1 2QL

John C Sallabank
 Harrisons
 4 St Giles Court
 Southampton Street
 Reading
 RG1 2QL


*Delete as
 applicable

attach a copy of ~~my~~/our proposals in respect of the administration of the above company

A copy of these proposals was sent to all known creditors on

(b) 29 January 2010

Signed


 Joint / Administrator(s)

Dated

29 January 2010

Contact Details

You do not have to give any contact
 information in the box opposite but if
 you do, it will help Companies House to
 contact you if there is a query on the
 form

The contact information that you give
 will be visible to researchers of the
 public record

P R Boyle
 Harrisons
 4 St Giles Court
 Southampton Street
 Reading
 RG1 2QL

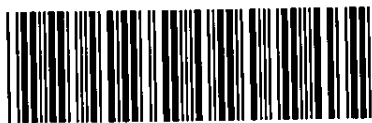
DX Number

0118 951 0798

DX Exchange

When you have completed and signed this form, please send it to the
 Registrar of Companies at -
Companies House, Crown Way, Cardiff CF14 3UZ DX 33050 Cardiff

WEDNESDAY



PNPZ2H7Q

PC3

03/02/2010

1023

COMPANIES HOUSE

**LPW Group Limited
LPW Fleetcare Limited
LPW Truckwash Limited
LPW Truckwash (MSA) Limited
- All In Administration**

**Report and Joint Administrators' Proposals
to Creditors Pursuant to Paragraph 49
of Schedule B1 of the Insolvency Act 1986**

LPW Group Limited
LPW Fleetcare Limited
LPW Truckwash Limited
LPW Truckwash (MSA) Limited
- All In Administration

**Report and Joint Administrators' Proposals
to Creditors Pursuant to Paragraph 49
of Schedule B1 of the Insolvency Act 1986**

**LPW Group Limited, LPW Fleetcare Limited, LPW Truckwash Limited, LPW Truckwash (MSA) Limited –
All In Administration ('the Companies')**

Report and Joint Administrators' Proposals

CONTENTS

- 1 Glossary
- 2 Statutory Information
- 3 Introduction
- 4 Background and Events Leading to the Application for an Administration
- 5 Purpose and Progress of the Administration
 - 5.1 Purpose of the Administration
 - 5.2 Progress of the Administration
 - 5.3 Other Matters
- 6 Statement of Affairs
- 7 Creditors' Meeting
- 8 Joint Administrators' Proposals

Appendices

- I Joint Administrators' Summary of Receipts and Payments
- II Statement of Affairs
- III Creditor and Shareholder Details
- IV Schedule of Time Costs and Guide to Administrators' Fees

LPW Group Limited, LPW Fleetcare Limited, LPW Truckwash Limited, LPW Truckwash (MSA) Limited – All In Administration

Report and Joint Administrators' Proposals

1. GLOSSARY

LPW GROUP LIMITED

Administrators	P R Boyle and J C Sallabank of Harrison's, 4 St Giles Court, Southampton Street, Reading, RG1 2QL
Appointors	Eurofactor (UK) Limited trading as Credit Agricole Commercial Finance ('CAC')
Administration Application	The administration documentation was filed at the High Court of Justice on 7 December 2009 and allocated Court Number 21633 of 2009
Company	LPW Group Limited (company registered number 06557826) ('the Company')

The references in this report to sections, paragraphs or rules are to the Insolvency Act 1986, Schedule B1 of the Insolvency Act 1986 and the Insolvency (Amendment) Rules 2003

2. STATUTORY INFORMATION

LPW GROUP LIMITED

Date of Incorporation	7 April 2008		
Registered Office	4 St Giles Court Southampton Street Reading RG1 2QL		
Former Registered Office	Unit 10 Pennine Business Park Bradley Road Huddersfield HD2 1GN		
Trading Addresses	Unit 10 Pennine Business Park Bradley Road Huddersfield HD2 1GN		
Nature of Business	Provision of Commercial Vehicle Cleaning		
Company Directors		Appointed	Resigned
	Laurie P Moon Susan Moon	7 April 2008 15 December 2008	- 30 September 2009
Company Secretary		Appointed	Resigned
	Susan Moon	7 April 2008	-
Shareholding	10,000 ordinary 1 pence shares issued and fully paid up and held as per the list attached at Appendix III		
Charges Register	An all assets debenture in favour of Eurofactor (UK) Limited was created on 11 April 2008 and registered at Companies House on 15 April 2008		

LPW Group Limited, LPW Fleetcare Limited, LPW Truckwash Limited, LPW Truckwash (MSA) Limited – All In Administration

Report and Joint Administrators' Proposals

1 GLOSSARY

LPW FLEETCARE LIMITED

Administrators	P R Boyle and J C Sallabank of Harrisons, 4 St Giles Court, Southampton Street, Reading, RG1 2QL
Appointors	Eurofactor (UK) Limited trading as Credit Agricole Commercial Finance ('CAC')
Administration Application	The administration documentation was filed at the High Court of Justice on 7 December 2009 and allocated Court Number 21637 of 2009
Company	LPW Fleetcare Limited (company registered number 06558536) ('the Company')

The references in this report to sections, paragraphs or rules are to the Insolvency Act 1986, Schedule B1 of the Insolvency Act 1986 and the Insolvency (Amendment) Rules 2003

2. STATUTORY INFORMATION

LPW FLEETCARE LIMITED

Date of Incorporation	8 April 2008		
Registered Office	4 St Giles Court Southampton Street Reading RG1 2QL		
Former Registered Office	Unit 10 Pennine Business Park Bradley Road Huddersfield HD2 1GN		
Trading Addresses	Unit 10 Pennine Business Park Bradley Road Huddersfield HD2 1GN		
Nature of Business	Provision of vehicle cleaning supplies & equipment		
Company Directors	Appointed		Resigned
	Laurie P Moon	15 October 2008	-
	Susan Moon	29 August 2008	30 September 2009
	Laurie P Moon	8 April 2008	29 August 2008
Company Secretary	Appointed		Resigned
	Susan Moon	8 April 2008	-
Shareholding	100 ordinary £1 shares issued and fully paid up and held as per the list attached at Appendix III		
Charges Register	An all assets debenture in favour of Eurofactor (UK) Limited was created on 11 April 2008 and registered at Companies House on 15 April 2008		

LPW Group Limited, LPW Fleetcare Limited, LPW Truckwash Limited, LPW Truckwash (MSA) Limited – All In Administration ('the Companies')

Report and Joint Administrators' Proposals

1. GLOSSARY	LPW TRUCKWASH LIMITED
Administrators	P R Boyle and J C Sallabank of Harrisons, 4 St Giles Court, Southampton Street, Reading, RG1 2QL
Appointors	Eurofactor (UK) Limited trading as Credit Agricole Commercial Finance ('CAC')
Administration Application	The administration documentation was filed at the High Court of Justice on 7 December 2009 and allocated Court Number 21632 of 2009
Company	LPW Truckwash Limited (company registered number 06554952) ('the Company')

The references in this report to sections, paragraphs or rules are to the Insolvency Act 1986, Schedule B1 of the Insolvency Act 1986 and the Insolvency (Amendment) Rules 2003

2. STATUTORY INFORMATION

LPW TRUCKWASH LIMITED

Date of Incorporation	3 April 2008		
Registered Office	4 St Giles Court Southampton Street Reading RG1 2QL		
Former Registered Office	Unit 10 Pennine Business Park Bradley Road Huddersfield HD2 1GN		
Trading Addresses	Unit 10 Pennine Business Park Bradley Road Huddersfield HD2 1GN		
Nature of Business	Commercial Vehicle Cleaning		
Company Directors	Appointed		Resigned
	Laurie P Moon	15 October 2008	-
	Susan Moon	29 August 2008	30 September 2009
	Laurie P Moon	3 April 2008	29 August 2008
Company Secretary	Appointed		Resigned
	Susan Moon	3 April 2008	-
	Gary A Taylor	3 April 2008	3 April 2008
Shareholding	10,000 ordinary 1 pence shares issued and fully paid up and held as per the list attached at Appendix III		
Charges Register	An all assets debenture in favour of Eurofactor (UK) Limited was created on 11 April 2008 and registered at Companies House on 15 April 2008		

LPW Group Limited, LPW Fleetcare Limited, LPW Truckwash Limited, LPW Truckwash (MSA) Limited – All In Administration

Report and Joint Administrators' Proposals

1. GLOSSARY

LPW TRUCKWASH (MSA) LIMITED

Administrators	P R Boyle and J C Sallabank of Harrisons, 4 St Giles Court, Southampton Street, Reading, RG1 2QL
Appointors	Eurofactor (UK) Limited trading as Credit Agricole Commercial Finance ('CAC')
Administration Application	The administration documentation was filed at the High Court of Justice on 7 December 2009 and allocated Court Number 21630 of 2009
Company	LPW Truckwash (MSA) Limited (company registered number 04257749) ('the Company')

The references in this report to sections, paragraphs or rules are to the Insolvency Act 1986, Schedule B1 of the Insolvency Act 1986 and the Insolvency (Amendment) Rules 2003

2. STATUTORY INFORMATION

LPW TRUCKWASH (MSA) LIMITED

Date of Incorporation	24 July 2001
Registered Office	4 St Giles Court Southampton Street Reading RG1 2QL
Former Registered Office	Unit 10 Pennine Business Park Bradley Road Bradley Huddersfield HD2 1GN
Trading Addresses	Unit 10 Pennine Business Park Bradley Road Bradley Huddersfield HD2 1GN
Nature of Business	Truck Washes at Motorway Service Areas

Company Directors	Appointed		Resigned
	Laurie P Moon	15 October 2008	-
	Susan Moon	15 December 2008	30 September 2009
	Susan Moon	29 August 2008	15 October 2008
	Laurie P Moon	30 November 2006	29 August 2008
	James W Moon	30 November 2006	20 April 2008
	Gary Moon	30 November 2006	20 April 2008
	Gary A Taylor	2 July 2007	1 August 2008
	Lisa J Taylor	1 August 2001	30 November 2001
Company Secretary	Appointed		Resigned
	Susan Moon	20 April 2008	-
	Lynda A Heywood	30 November 2006	8 May 2008
	Lisa J Taylor	10 March 2003	30 November 2006
	MCA Registrars Limited	12 November 2003	25 February 2005
	Gary A Taylor	1 August 2001	12 November 2003

**LPW Group Limited, LPW Fleetcare Limited, LPW Truckwash Limited, LPW Truckwash (MSA) Limited –
All In Administration**

Report and Joint Administrators' Proposals

STATUTORY INFORMATION

LPW TRUCKWASH (MSA) LIMITED CONT...

Shareholding

100 ordinary £1 shares issued and fully paid up and held as per the list attached at Appendix III

Charges Register

An all assets debenture in favour of Eurofactor (UK) Limited was created on 11 April 2008 and registered at Companies House on 15 April 2008

LPW Group Limited, LPW Fleetcare Limited, LPW Truckwash Limited, LPW Truckwash (MSA) Limited – All In Administration ('the Companies')

Report and Joint Administrators' Proposals

3 INTRODUCTION

P P Boyle and J C Sallabank of Harrisons were appointed as Joint Administrators of LPW Truckwash Limited on 7 December 2009 upon CAC filing a notice of appointment of an administrator at the High Court of Justice in accordance with Paragraph 14 of Schedule B1 of the Insolvency Act 1986

We can advise that pursuant to Paragraph 100(2) of Schedule B1 Insolvency Act 1986 the functions of the Joint Administrators are being exercised by either or both of the Administrators

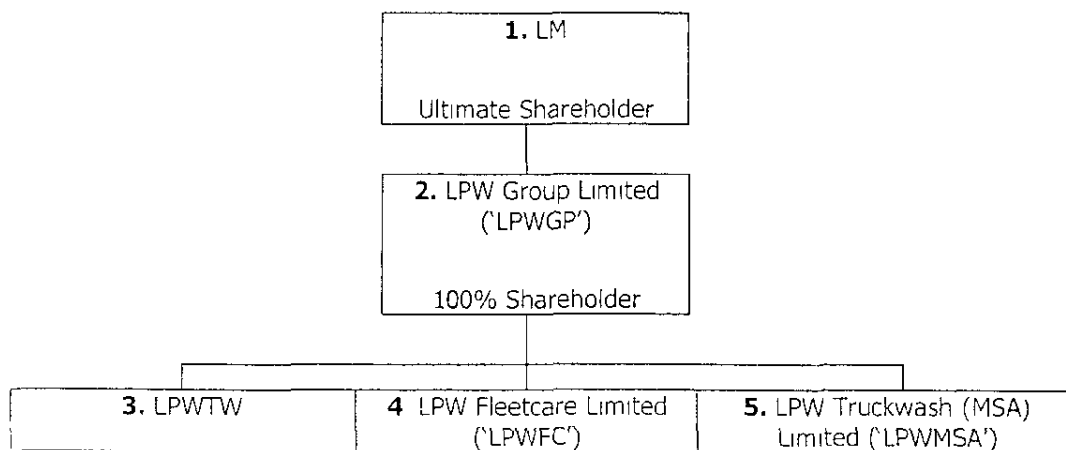
In accordance with Paragraph 49 of Schedule B1 Insolvency Act 1986 we the Joint Administrators now set out our proposals for achieving the purpose and conduct of the administration

This report also includes certain information for creditors that is a requirement under Rule 2.33 of the Insolvency Rules 1986

4. BACKGROUND AND EVENTS LEADING TO THE APPLICATION FOR AN ADMINISTRATION

LPW Truckwash Limited ('LPWTW') was incorporated on 3 April 2008 under the name of Moonshelf Limited and changed its name on 9 April 2008, shortly before acquiring the business of LPWGR Limited ('LPWGR') which formerly traded as LPW Group Limited. LPWGR was subject to administration proceedings commencing on 10 April 2008

At the time of the purchase Laurie Moon ('LM'), who was also a director of LPWGR, restructured the business as follows -



- 1 Director of all these companies and 100% shareholder of LPW GP Limited
- 2 LPWGP was incorporated on 7 April 2008 under the name of Moonhold Limited and changed its name to on 9 May 2008. This is a holding company. This company is the 100% shareholder of LPWTW, LPWFC and LPWMSA.
- 3 LPWTW purchased the business and assets of LPWGR Limited from its Administrators. The company provides truck washing facilities from a number of service stations throughout the UK where
- 4 LPWFC was incorporated on 8 April 2008 under the name of LPW Fleetwash Limited and changed its name on 11 April 2008. After the reconstruction of the group, LPWFC focused solely on the supply of cleaning products and equipment to the transport industry.

LPW Group Limited, LPW Fleetcare Limited, LPW Truckwash Limited, LPW Truckwash (MSA) Limited – All In Administration ('the Companies')

Report and Joint Administrators' Proposals

4 BACKGROUND AND EVENTS LEADING TO THE APPLICATION FOR AN ADMINISTRATION CONT .

- 5 LPWMSA was incorporated in 24 July 2001 under the name of Alpine Cleaning Services Limited and changed its name to LPW Truckwash MSA Limited on 25 April 2008. The company dealt with the provision of truckwashes at motorway service stations.

LM has advised that he believed that restructuring the business into separate companies dealing with distinct areas would reduce the confusion caused by effectively conducting two businesses in one company. It would also enable them to be managed as separate profit centres. Therefore, the business was restructured to separate out the functions of the truckwash side of the business with the supply of the products.

Initial trading was promising but problems arose as customers were unable to distinguish the functions of LPWTW with LPWMSA. As a result in July 2008 these two businesses amalgamated and LPWMSA has been a dormant company since that time.

LPWTW traded from leased premises in Huddersfield on a three year lease taken out in March 2009 for £25,000 per annum and provided for a break clause each year. At the end of the first year of trading LPWTW's turnover was in the region of £2million and had a gross profit margin of 25%.

LPWFC traded from premises in Hornchurch on an informal basis. At the end of the first year of trade LPWFC's turnover was in the region of £1million with a gross profit margin of 25%.

It is understood that the Companies were funded through an invoice discounting facility with CAC which provided a combined facility of approximately £1million. The Companies banked with National Westminster Bank plc but did not have any overdraft facilities or loans.

Even with this funding and the steps taken to reduce overheads, the Companies still experienced cash flow problems. LM has advised that this was primarily due to the fact that they had difficulty in obtaining credit and had to trade on a pro forma basis. In addition, the business was adversely affected by the downturn in the economy as there were less HGV's on the road from the autumn of 2008. This was evidenced by the number of large profile insolvencies in the retail sector which began in the last quarter of 2008 and adversely affected the logistics market.

At the time of the Administration of LPWGR it had approximately 130 employees that were transferred to LPWTW under the Transfer of Undertaking (Protection of Employment) Regulations 2006 ('TUPER'). In a process of becoming more efficient and cost effective the LM reduced the overhead of the Companies over time through redundancy and natural wastage. By December 2009 the total number of employees for all the companies had reduced to approximately 80. LM also confirmed that LPWTW closed 6 sites that it had traded from during that period.

Additionally, LM was trying to obtain new financing for the Companies and to restructure the same in order to cut overheads further to facilitate trade going forward. LPWTW was to relocate to the Hornchurch premises and had given notice on the Huddersfield premises with the intention of reducing rental costs.

However, at the beginning of December 2009 we were contacted by CAC due to our prior experience of the director and the business. CAC expressed a concern that there appeared to be a significant amount of credits raised against the combined ledger of the business. This related primarily as a result of duplicate invoices being raised and invoices being raised in advance. As a result of this CAC felt there would be a large deficiency in their security.

LPW Group Limited, LPW Fleetcare Limited, LPW Truckwash Limited, LPW Truckwash (MSA) Limited – All In Administration ('the Companies')

Report and Joint Administrators' Proposals

4. BACKGROUND AND EVENTS LEADING TO THE APPLICATION FOR AN ADMINISTRATION CONT .

At a meeting held with LM and CAC, alternative insolvency proceedings were considered. The Companies considered putting forward a proposal to its creditors under a company voluntary arrangement. However, they were unable to do so as they would have been unable to cash flow ongoing trade with the level of historic debt and contractual obligations going forward.

Placing the Companies into liquidation was also considered but rejected as liquidation would result in the loss of the goodwill of the business. Further, all employees would have been made redundant. Therefore, an Administration was the only alternative left to the Companies which would enable the protection of the employees' contracts and the preservation of the Companies' goodwill.

In order to secure its position, CAC considered that it had no alternative other than to exercise its rights under its debenture. Accordingly, on 7 December 2009 a notice of appointment of administrators by the holder of a qualifying floating charge was filed at the High Court of Justice.

5. PURPOSE AND PROGRESS OF THE ADMINISTRATION

5.1 Purpose of the Administration

The Companies could not be saved as a going concern in accordance with Paragraph 3(1)(a), since there were insufficient funds available to finance trading the Company or to enable a contribution based voluntary arrangement. Paragraph 3(1)(b) does not apply since there are insufficient funds to enable a distribution to unsecured creditors.

The purpose of the Administration, in accordance with Paragraph 3(1)(c) is to realise property in order to make a distribution to one or more secured or preferential creditor.

5.2 Progress of the Administration

5.2.1 Receipts and Payments Account

Attached for your referral at Appendix I is a summary of our receipts and payments since the commencement of the proceedings on 7 December 2009 to date.

5.2.2 Sale of Business

Prior to our appointment the business was marketed as a whole by way of a detailed circular to my firm's database of third parties who had expressed an interest in acquiring businesses in the Company's trading sector. Thereafter three parties stated an initial interest in the business of the Companies but after receiving additional information one of the parties indicated that they did not wish to proceed.

A meeting was arranged for Monday 7 December 2009 at the Huddersfield office to allow the other third party purchaser the chance to meet with LM. And gain an understanding of the business. He Administrators were always under the impression that the offer would only be formalised if they could work

with LM going forward. The third party was advised of the name of the business so he could do some research of his own. On Monday morning the third party purchaser withdrew their offer and cancelled the appointment to attend the Huddersfield office therefore we had no choice other than to commence negotiation solely within LM.

LPW Group Limited, LPW Fleetcare Limited, LPW Truckwash Limited, LPW Truckwash (MSA) Limited – All In Administration ('the Companies')

Report and Joint Administrators' Proposals

5.2.2 Sale of Business Cont

Immediately upon our appointment it was evident that there was no possibility of the Joint Administrators trading the Company. It had been established that there were insufficient funds available to enable any appointed Administrator to trade, even in the short term, which would have provided a period of time in which marketing activities could be undertaken.

Shortly prior to the Joint Administrators' appointment LM, on behalf of Azzurri (Foods) Limited ('Azzurri'), expressed an interest in purchasing the goodwill and intellectual property rights belonging to the business. Azzurri stated an intention to continue the business and in doing so protect the jobs of the employees and maintain a seamless service to clients.

An independent valuation of LPWFC's chattels and stock held at the Hornchurch premises was undertaken by Ashwells Nationwide Services ('Ashwells'), who are independent Agents and Valuers, on 3 December 2009. Ashwells stated that the chattel assets were valued at £3,410 in situ and £1,370 on a break up basis and recommended that the offer for the assets be accepted.

An independent valuation of LPWTW, in particular its financed assets and equipment, was undertaken by JPS Chartered Surveyors ('JPS'), independent Agents and Valuers, 3 December 2009. JPS stated that, taking into account the outstanding finance, the business assets had no equity and that the chattels at the Hornchurch premises as a whole were valued at £410 in situ and £165 on a forced sale basis.

An offer of £62,500 for the four connected businesses was received from Azzurri to purchase the stock and equipment, work in progress, goodwill and intellectual property rights of the Company. Azzurri is a business wholly owned by LM, who is also its director. We are not aware of any parties advising Azzurri. The realisation achieved is in excess of the valuation undertaken and the Agent endorsed the offer made as acceptable.

We would advise that on 7 December 2009 the assets scheduled below were sold subject to a Sale and Purchase Agreement to Azzurri for the total sum of ££62,500 -

	£
Goodwill and trading styles	50,000
Intellectual property rights	4
Chattel assets	4,000
Work in Progress	8,496
	<u>£62,500</u>

I confirm that the full sum payable has been received and the sale proceeds have been apportioned appropriately between the Companies to reflect the business and asset values advised by our agents.

5.2.3 Book Debts

The sale of business assets did not include the book debts, which will not pass across to the successor business. These debts are subject to a fixed charge in favour of CAC in accordance with their debenture and invoice discounting agreement dated 11 April 2008. Inksmoor Trade Credit Management ('Inksmoor') is to assist us in the collection of the outstanding book debt.

At the date of appointment book debts outstanding in LPWFC totalled £551,488 of which the Director estimates that approximately £248,170 to be realisable. To date £102,531 has been collected. Although a further £439,741 is outstanding it is unclear how much of this will be realisable.

LPW Group Limited, LPW Fleetcare Limited, LPW Truckwash Limited, LPW Truckwash (MSA) Limited – All In Administration ('the Companies')

Report and Joint Administrators' Proposals

5.2.3 Book Debts cont

At the date of appointment book debts outstanding in LPWTW totalled £576,082 of which the Director estimates that approximately £345,649 to be realisable. To date £227,178 has been collected. Although a further £346,636 is outstanding it is unclear how much of this will be realisable.

At the date of appointment book debts outstanding in LPWMSA totalled £13,518 of which the Director is uncertain of whether this will be collectable. To date £23 has been collected.

5.2.4 Secured Creditor

A first legal charge was granted to CAC on 11 April 2008, which was registered on 15 April 2008 and provided fixed and floating charges over all tangible and intangible assets of the Company.

Section 176A of the Insolvency Act 1986 provides that, where a company has created a floating charge after 15 September 2003, the Administrator must make a Prescribed Part of the company's Net Property available for the unsecured creditors and not distribute it to the floating chargeholder except in so far as it exceeds the amount required for the satisfaction of unsecured claims. Net Property means the amount which would, were it not for this provision, be available to floating chargeholders out of floating charge assets (i.e. after accounting for preferential debts and the costs of realisation). The Prescribed Part is calculated by reference to a sliding scale as follows:

- 50% of the first £10,000 of Net Property
- 20% of Net Property thereafter
- up to a maximum amount to be made available of £600,000

An Administrator will not be required to set aside the Prescribed Part if

- the Net Property is less than £10,000 and he thinks the cost of distributing the Prescribed Part would be disproportionate to the benefit, (Section 176A(3)) or
- he applies to the Court for an order on the grounds that the cost of distributing the Prescribed Part would be disproportionate to the benefit and the Court orders that the provision shall not apply (Section 176A(5))

In accordance with Rule 2.33 of the Insolvency Rules 1986 we would advise that since net property is estimated to be below the prescribed minimum of £10,000 for each the Company and we the Joint Administrators consider that the cost of distribution will be disproportionate to the benefit there will be no prescribed part pursuant to Section 176A of the Insolvency Act 1986 available to unsecured creditors. However, we reserve our position generally in this regard should circumstances materially change.

5.2.5 Employees

At the date of appointment there were 83 employees working for the Companies. All of these employees have now been taken on by Azzurri and all rights transferred in accordance with the Transfer of Undertakings (Protection of Employment) Regulations 2006. As a result no preferential employee claims fall on the business.

LPW Group Limited, LPW Fleetcare Limited, LPW Truckwash Limited, LPW Truckwash (MSA) Limited – All In Administration ('the Companies')

Report and Joint Administrators' Proposals

5.3 Other Matters

5.3.1 Joint Administrators' Remuneration

In accordance with Rule 2.106(5A) our remuneration shall be agreed with the fixed and floating chargeholder. However, a schedule of our time costs to date and a guide to Administrators' remuneration for each company is attached at Appendix IV, for your information.

5.3.2 EC Regulations

EC Regulations apply. All of the proceedings are main proceedings as defined by Article 3 of the EC Regulation.

5.3.3 Relevant information pursuant to Rule 2.33 of the Insolvency Rules 1986

No trading has taken place during the Administrations as a result of the prompt sale and therefore the terms of Rule 2.33(2)(o)(ii) do not apply.

5.3.4 Dividend Prospects

It is apparent from the information available to date that there is no possibility of there being sufficient funds available to enable a distribution to the unsecured creditors.

6. STATEMENT OF AFFAIRS

In accordance with Paragraph 47(1) of Schedule B1 of the Insolvency Act 1986 the directors have been asked to provide us as Joint Administrators a Statement of Affairs as at 7 December 2009.

However, at the date of writing this has not yet been received and no explanation has been given in respect of this non-compliance.

For the purpose of this report we have prepared an estimated statement of affairs, which is attached at Appendix II for each company.

7. CREDITORS' MEETING

Since there is no possibility of there being sufficient funds available to enable a distribution to the unsecured creditors of any of the Companies it is not our intention to call a meeting of creditors at this time, in accordance with Paragraph 52(1)(b) of Schedule B1 of the Insolvency Act 1986.

However, in accordance with Paragraph 52(2) a meeting of creditors shall be held if, within 12 days of the date of this report, creditors whose debts amount to at least 10% of the total debts of the relevant Company request it. Therefore, should you require a meeting of creditors to be held please contact us upon receipt of this report.

LPW Group Limited, LPW Fleetcare Limited, LPW Truckwash Limited, LPW Truckwash (MSA) Limited – All In Administration ('the Companies')

Report and Joint Administrators' Proposals

8. JOINT ADMINISTRATORS' PROPOSALS

For each of the Companies we the Joint Administrators propose the following -

- 1 Should the Joint Administrators believe that it is appropriate to do so and or beneficial to realisations and or in satisfaction of the sums due to the secured creditor, they be authorised to extend the term of office for 6 months from the automatic end date of 6 December 2010, in accordance with Paragraph 76(2) of Schedule B1 of the Insolvency Act 1986
- 2 Since there are insufficient assets available to enable a distribution to the unsecured creditors the Joint Administrators shall conclude the administration pursuant to Paragraph 84 of Schedule B1 of the Insolvency Act 1986, moving from administration to dissolution. This will be carried out once all matters have been finalised
- 3 Since there are insufficient funds available to make a distribution to unsecured creditors and a creditor indicates his written intention to petition for the compulsory winding up of the Company or provides a written request that the company be placed into compulsory winding up, for the purpose of the Official Receiver conducting an investigation, the Administrator is granted authority to exit the Administration under Paragraph 80 of Schedule B1 of the Insolvency Act 1986 thereby creating the vehicle for a creditor to petition for a compulsory winding up order
- 4 In accordance with Paragraph 98 of Schedule B1 of the Insolvency Act 1986 the Joint Administrators' are discharged from any liability with regards to the Company and granted their release from office when the proceedings come to an end and upon the filing of the appropriate documentation at Companies House

If you have any questions in relation to this report please do not hesitate to contact our local office



P R Boyle & J C Sallabank
Joint Administrators

25 January 2010

LPW Group Limited
(In Administration)
Joint Administrators' Abstract of Receipts & Payments
To 20/01/2010

S of A £		£	£
	SECURED ASSETS		
1 00	Goodwill	NIL	
1 00	Intellectual Property Rights	NIL	
			NIL
	ASSET REALISATIONS		
1 00	Goodwill	1 00	
1 00	Intellectual Property Rights	1 00	
			2 00
	UNSECURED CREDITORS		
(34,051 00)	Trade & Expense Creditors	NIL	
(9 755 00)	Directors	NIL	
(53 000 00)	HM Revenue & Customs - PAYE	NIL	
(24 000 00)	HM Revenue & Customs - VAT	NIL	
			NIL
	DISTRIBUTIONS		
(100 00)	Ordinary Shareholders	NIL	
			NIL
(120,902 00)			2 00
	REPRESENTED BY		
	Bank 2 - Current		2 00
			2 00

Notes

LPW Fleetcare Limited
(In Administration)
Joint Administrators' Abstract of Receipts & Payments
To 20/01/2010

S of A £		£	£
	SECURED ASSETS		
14 999 00	Goodwill	14 999 00	
1 00	Intellectual Property Rights	1 00	
248 170 00	Book Debts	NIL	
			15 000 00
	SECURED CREDITORS		
(454 931 00)	CAC (UK) Limited	NIL	
			NIL
	ASSET REALISATIONS		
3 500 00	Stock & Equipment	3,500 00	
			3,500 00
	COST OF REALISATIONS		
	Agents/Valuers Fees (1)	1,500 00	
			(1,500 00)
	UNSECURED CREDITORS		
(80,077 00)	Trade & Expense Creditors	NIL	
(5 000 00)	Directors	NIL	
(56 000 00)	HM Revenue & Customs - PAYE	NIL	
(59 000 00)	HM Revenue & Customs - VAT	NIL	
			NIL
	DISTRIBUTIONS		
(100 00)	Ordinary Shareholders	NIL	
			NIL
(388,438 00)			17,000 00
	REPRESENTED BY		
	VAT Receivable		225 00
	Bank 2 - Current		16 775 00
			17,000 00

Notes

LPW Truckwash Limited
(In Administration)
Joint Administrators' Abstract of Receipts & Payments
To 20/01/2010

S of A £		£	£
	SECURED ASSETS		
34 990 00	Goodwill	NIL	
1 00	Intellectual Property Rights	NIL	
345 649 00	Book Debts	NIL	
			NIL
	SECURED CREDITORS		
(536,340 00)	CAC (UK) Limited	NIL	
			NIL
	ASSET REALISATIONS		
	Goodwill	34,999 00	
	Intellectual Property Rights	1 00	
500 00	Stock & Equipment	500 00	
8,496 00	Work In Progress	8 496 00	
	Rates Refund	760 94	
			44,756 94
	COST OF REALISATIONS		
	Agents/Valuers Fees (1)	678 00	
			(678 00)
	UNSECURED CREDITORS		
(99,723 00)	Trade & Expense Creditors	NIL	
(73,332 00)	LPWGR Limited - In Administration	NIL	
(12 015 00)	Directors	NIL	
(1,341 00)	National Westminster Bank	NIL	
(190,000 00)	HM Revenue & Customs - PAYE	NIL	
(102,000 00)	HM Revenue & Customs - VAT	NIL	
			NIL
	DISTRIBUTIONS		
(100 00)	Ordinary Shareholders	NIL	
			NIL
<u>(625,215 00)</u>			<u><u>44,078 94</u></u>
	REPRESENTED BY		
	VAT Receivable		101 70
	Bank 2 - Current		44,756 94
	Trade Creditors		(779 70)
			<u><u>44,078 94</u></u>

Notes

LPW Truckwash (MSA) Limited
(In Administration)
Joint Administrators' Abstract of Receipts & Payments
To 20/01/2010

S of A £		£	£
	SECURED ASSETS		
1 00	Goodwill	NIL	
1 00	Intellectual Property Rights	NIL	
Uncertain	Book Debts	NIL	
			NIL
	SECURED CREDITORS		
(10 012 00)	CAC (UK) Limited	NIL	
			NIL
	ASSET REALISATIONS		
	Goodwill	1 00	
	Intellectual Property Rights	1 00	
			2 00
	DISTRIBUTIONS		
(100 00)	Ordinary Shareholders	NIL	
			NIL
(10,110 00)			2 00
	REPRESENTED BY		
	Bank 2 - Current		2 00
			2 00

Notes

Insolvency Act 1986

LPW Group Limited
Estimated Statement Of Affairs as at 7 December 2009

	Book Value £	Estimated to Realise £	£
ASSETS			
Goodwill	NIL	1 00	
Intellectual Property Rights	NIL	1 00	
Goodwill			1 00
Intellectual Property Rights			1 00
			<u>2 00</u>
LIABILITIES			
PREFERENTIAL CREDITORS -			
			<u>NIL</u>
			2 00
Estimated prescribed part of net property where applicable (to carry forward)			<u>NIL</u>
			2 00
DEBTS SECURED BY FLOATING CHARGE			
			<u>NIL</u>
			2 00
Estimated prescribed part of net property where applicable (brought down)			<u>NIL</u>
			2 00
Unsecured non-preferential claims (excluding any shortfall to floating charge holders)			
Trade & Expense Creditors		34,051 00	
Directors		9,755 00	
HM Revenue & Customs - PAYE		53,000 00	
HM Revenue & Customs - VAT		24,000 00	
			<u>120,806 00</u>
Estimated deficiency/surplus as regards non-preferential creditors (excluding any shortfall to floating charge holders)			<u>(120,804 00)</u>
			(120,804 00)
Issued and called up capital			
Ordinary Shareholders		100 00	
			<u>100 00</u>
TOTAL SURPLUS/(DEFICIENCY)			<u><u>(120,904 00)</u></u>

Insolvency Act 1986

LPW Fleetcare Limited
Estimated Statement Of Affairs as at 7 December 2009

	Book Value	Estimated to Realise	
	£	£	£
ASSETS			
Goodwill	NIL	14 999 00	
Intellectual Property Rights	NIL	1 00	
Book Debts	551 488 00	248 170 00	
CAC (UK) Limited	(454 931 00)	(454 931 00)	
Deficiency c/d		(191 761 00)	
Stock & Equipment			3 500 00
			3 500 00
LIABILITIES			
PREFERENTIAL CREDITORS -			NIL
			3 500 00
DEBTS SECURED BY FLOATING CHARGE PRE 15 SEPTEMBER 2003			
Deficiency b/d			191,761 00
			(188 261 00)
Estimated prescribed part of net property where applicable (to carry forward)			NIL
			(188,261 00)
DEBTS SECURED BY FLOATING CHARGE			
			NIL
			(188,261 00)
Estimated prescribed part of net property where applicable (brought down)			NIL
			NIL
Unsecured non-preferential claims (excluding any shortfall to floating charge holders)			
Shortfall to preferential creditors (brought down)		188,261 00	
Trade & Expense Creditors		80,077 00	
Directors		5,000 00	
HM Revenue & Customs - PAYE		56,000 00	
HM Revenue & Customs - VAT		59 000 00	
			388,338 00
Estimated deficiency/surplus as regards non-preferential creditors (excluding any shortfall to floating charge holders)			(388 338 00)
			(388 338 00)
Issued and called up capital			
Ordinary Shareholders		100 00	
			100 00
TOTAL SURPLUS/(DEFICIENCY)			(388 438 00)

Insolvency Act 1986

LPW Truckwash Limited
Estimated Statement Of Affairs as at 7 December 2009

	Book Value	Estimated to Realise	
	£	£	£
ASSETS			
Goodwill	NIL	34,990 00	
Intellectual Property Rights	NIL	1 00	
Book Depts	576 082 00	345 649 00	
CAC (UK) Limited	(536 340 00)	(536,340 00)	
Deficiency c/d		(155,700 00)	
Stock & Equipment			500 00
Work In Progress			8 496 00
			8,996 00
LIABILITIES			
PREFERENTIAL CREDITORS -			
			NIL
			8,996 00
DEBTS SECURED BY FLOATING CHARGE PRE 15 SEPTEMBER 2003			
Deficiency b/d			155 700 00
			(146,704 00)
Estimated prescribed part of net property where applicable (to carry forward)			NIL
			(146,704 00)
DEBTS SECURED BY FLOATING CHARGE			
			NIL
			(146,704 00)
Estimated prescribed part of net property where applicable (brought down)			NIL
			NIL
Unsecured non-preferential claims (excluding any shortfall to floating charge holders)			
Shortfall to preferential creditors (brought down)		146,704 00	
Trade & Expense Creditors		99,723 00	
LPWGR Limited - In Administration		73,332 00	
Directors		12,015 00	
National Westminster Bank		1 341 00	
HM Revenue & Customs - PAYE		190 000 00	
HM Revenue & Customs - VAT		102,000 00	
			625 115 00
Estimated deficiency/surplus as regards non-preferential creditors (excluding any shortfall to floating charge holders)			(625 115 00)
			(625 115 00)
Issued and called up capital			
Ordinary Shareholders		100 00	
			100 00
TOTAL SURPLUS/(DEFICIENCY)			(625 215 00)

Insolvency Act 1986

LPW Truckwash (MSA) Limited
Estimated Statement Of Affairs as at 7 December 2009

	Book Value	Estimated to Realise	
	£	£	£
ASSETS			
Goodwill	NIL	1 00	
Intellectual Property Rights	NIL	1 00	
Book Debts	13 518 00	Uncertain	
CAC (UK) Limited	(10,012 00)	(10,012 00)	
Deficiency c/d		(10 010 00)	
			NIL
LIABILITIES			
PREFERENTIAL CREDITORS -			NIL
			NIL
Estimated prescribed part of net property where applicable (to carry forward)			NIL
			NIL
DEBTS SECURED BY FLOATING CHARGE			
Deficiency b/d		10,010 00	
			10,010 00
			(10,010 00)
Estimated prescribed part of net property where applicable (brought down)			NIL
			NIL
Unsecured non-preferential claims (excluding any shortfall to floating charge holders)			NIL
Estimated deficiency/surplus as regards non-preferential creditors (excluding any shortfall to floating charge holders)			NIL
Shortfall to floating charge holders (brought down)			10 010 00
			(10,010 00)
Issued and called up capital			
Ordinary Shareholders		100 00	
			100 00
TOTAL SURPLUS/(DEFICIENCY)			(10 110 00)

Key	Name	Address	£
2A00	Autoglass	1 Priory Business Park Cardington, Bradford, MK44 3US	284 61
2B02	Brake Road Safety Charity	PO Box 548, Huddersfield, HD1 2XZ	3,864 00
2B03	Brakes Bros Limited	PO Box 222, Ashford, Kent, TN24 8ZL	3,105 00
2B01	British Gas		260 37
2B00	Byron Finance	Foundation House, 42-48 London Road, Reigate, Surrey, RH2 9QQ	2,350 00
2C00	CAC (UK) Limited	Bellerive House, 3 Muirfield Crescent, Docklands, London, E14 9SZ	0 00
2E00	Eddisons	Pennine House, Russell Street, Leeds, West Yorkshire, LS1 5RN	7 486 26
2E01	E-On		1,821 04
2E03	E-On	E ON Energy Ltd, Newland House, 49 Mount Street, NG1 6PG	42 48
2E02	Essex & Suffolk Water	Essex & Suffolk Water, Customer Centre, P O Box 292, Durham, DH1 9TX	125 49
2G01	G J Toilet Hire	the Bungalow, High House Lane, Linthwaite, Huddersfield, HD7 5TS	358 20
2H00	H M Customs & Excise	Southern Region Debt Management,, Compass House, Romsey Road, Maybush, Southampton, SO16 4HP, (For the attention of Des Callow)	0 00
2H02	HM Revenue & Customs	VAT Operations Insolvency, Queens Dock, Liverpool, L74 4AF	24,000 00
2H03	HM Revenue & Customs	Enforcement Office, Durrington Bridge House, Barrington Road, Worthing, BN12 4SE	53,000 00
2H01	HM Revenue & Customs (ICHU)	Room BP3202, Warkworth House, Benton Park View, Longbenton, Newcastle Upon Tyne NE1ZZ	0 00
2K00	Kirkless Council	Cleansing Services, Environmental Services, Riverbank Court, Wakefield Road, Huddersfield, West Yorkshire, HD5 9AA	3,481 53
RM00	Laurie P Moon	The Mansion House, Heaton Lodge, Huddersfield, West Yorkshire, HD5 0PW	9,755 19
2L00	Lighthouse Risk Services LLP	Airdale House, Park Road, Guisely, Leeds, LS20 8EH	5,209 50
CM00	Mobile Mini UK Limited	Unit 1, Keystone House, Boundary Road Loudwater, Bucks, HP10 9PN	1,018 35
2N01	National Westminster Bank Plc	Station Lane, Upminster, Essex, RM14 2UD	0 00
2N00	NPower	PO Box 93, Peterlee, SR8 2XX	984 96
CO00	Oval	9 Drakehouse Crescent, Sheffield, S20 7HT	471 10
CS00	Swift Help Hire	Chelford House, Gadbrook Park, Rudheath, Cheshire, CW9 7LN	269 56
CT00	The Moon Pension Scheme	LPW House, 2B SUTTONS Lane, Hornchurch, Essex, RM12 6RJ	1,875 00
CU00	United Utilities		270 00
CV01	Vantis Plc	Nexus House, 2 Cray Road, Sidcup, Kent, DA14 5DA	0 00
CV00	Veolia Water	Veolia Water, Tamblin Way, Hatfield, Hertfordshire, AL10 9EZ	773 19

Hairiconis
 LPW Group Limited
 B - Company Creditors

Key	Name	Address	£
27 Entries Totalling			120,805 83

arrisons
PW Group Limited
- Shareholders

Key	Name	Address	Pref	Ord	Other	Total
M00	Laurie P Moon	The Mansion House, Heaton Lodge, Huddersfield, West Yorkshire, HD5 0PW	0	10,000	0	10,000
Entries Totalling						10,000

Signature

Harrisons

LPW Fleetcare Limited

3 - Company Creditors

Key	Name	Address	£
2100	1 Car 1 Com Limited	Off Leeds Road Huddersfield, HD2 1FE	95 62
2A00	Advanced Diesel Engineering Limited	14 Langthwaite Business Park South Kirby, Pontefract, WF9 3AP	83 60
2A01	Atlantis International Limited	Unit 2, 18 Weldon Road, Loughborough, Leicestershire, LE11 5RA	1 559 51
2A02	Autoglass	PO Box 4487, Worthing, BN13 1YL	453 37
2B00	British Telecom	Willow Lane Trading Estate, Mitchum, Surrey, CR4 4ND	0 00
2B01	B d Clays	Bellerive House, 3 Murrfield Crescent, Docklands, London, E14 9SZ	493 48
2C00	CAC (UK) Limited	Francis House, Shobnall Road, Burton on Trent, Staffs, DE14 2BB	454,931 28
2C01	CFH Tanker Services Limited	Units 19 & 20 , Greenshields Industrial Estate, Bradfield Road Slivertown London, E16	2 599 00
2F00	Forest Hydraulics Limited	2AU	6,322 89
2H00	H M Customs & Excise	Southern Region Debt Management,, Compass House, Romsey Road, Maybush, Southampton, SO16 4HP, (For the attention of Des Callow)	0 00
2H01	HM Revenue & Customs (ICHU)	Room BP3202, Warkworth House, Benton Park View, Longbenton, Newcastle Upon Tyne NE1ZZ	0 00
2H02	Haverling London Borough	Revenue Services, Financial & Commercial, London Borough of Havering, Town Hall, Romford Essex, RM1 3BB	1,635 50
2H03	HM Revenue & Customs	VAT Operations Insolvency, Queens Dock, Liverpool L74 4AF	59,000 00
2H04	HM Revenue & Customs	Enforcement Office, Durrington Bridge House, Barrington Road Worthing, BN12 4SE	56,000 00
2H05	Howell Brooks & Partners LLP	78/79 Long Lane, London, EC1A 9RP	0 00
2I00	Istobal	Milton Mill Industrial Estate, Mill Road, Stourport on Seven, Worcestershire DY13 9BL	9,641 07
2J00	JCT600 Contracts Ltd	Tordoff House, Apperley Bridge, Bradford, West Yorkshire, BD10 0PQ	738 70
2M00	Mobile Fleetwash UK Limited	Interwood House, Stafford Avenue, Hornchurch, Essex RM11 2ER	49,035 95
2N00	National Westminster Bank plc	Station Lane, Upminster, Essex, RM14 2UD	0 00
2R00	Regional Waste Recycling	12 Barbers Road, Stratford London, E15 2PH	1,035 00
2R01	Reg Naylor (Liversedge) Limited	Rawfolds Way, Spen Valley Industrial Park, Rawfolds, Cleckheaton, West Yorkshire, BD19 5LJ	4,271 55
2S00	Speedway Car & Van Hire	165 Locking Road, Weston Super Mare, Bristol, BS23 3HE	1 229 88
2S01	Scottish Power Energy Retail Limited	1 Atlantic Quay, Glasgow, G2 8SP	0 00
2T00	The Moon Pension Scheme	LPW House, 2B SUTTONS Lane, Hornchurch, Essex, RM12 6RJ	677 90
2V00	Vodafone Limited	PO Box 932, Doncaster, DN4 5XW	0 00
2V01	Vantis Plc	Nexus House, 2 Cray Road, Sidcup, Kent, DA14 5DA	0 00
2Y00	Yorkshire Water	Western House, Halifax Road, Bradford, BD6 2SZ	203 53

arrisons
PW Fleetcare Limited
- Company Creditors

by	Name	Address	£
400	Mr L P Moon	The Mansion House, Heaton Lodge, Huddersfield, West Yorkshire, HD5 0PW	5 000 00
Entries Totalling			655,007 83

Signature

PW Fleececare Limited
- Shareholders

Entry	Name	Address	Pref	Ord	Other	Total
100	PW Group Limited - In Administration	c/o Harrisons, 4 St Giles Court, Southampton Street Reading, RG1 2QL	0	100	0	100
Entries Totalling						100

Signature

Pay	Name	Address	£
A00	Anglian Water Services	Anglian House, Ambury Road, Huntingdon, Cambridgeshire, PE29 3NZ	2,578 44
A01	Auto Glass Limited	PO Box 4487, Worthing, BN13 1YL	411 75
B03	Bayford & Co Limited	Fleet Lane, Woodlesford, Leeds, LS26 8AE	359 67
B04	Big Yellow Grab IRE t/a Big	17 Juliet Way, Purfleet Industrial Estate, south Ockendon, Essex, RM15 4YD	160 20
B00	Bizz Energy Limited	Bizz Energy House, Brook Court, Whittington Road, Worcester, WR5 2RX	5,236 01
B02	Bristol Water	Bristol Wessex Billing Services Limited, Clevedon Walk, Nailsea, Bristol, BS48 1WA	971 16
B01	British Gas Business	c/o Lynn Taylor, KPMG LLP, National Client Care, 2 Cornwall Street, Birmingham, B3 2DL	900 85
B05	BT	Dept W, TVTE, Newcastle upon Tyne, NE83 7ZF	759 62
C00	CAC (UK) Limited	Bellerive House, 3 Muirfield Crescent, Docklands, London, E14 9SZ	536,340 00
C02	Constructional Steel & Alloy	7 Salamons Way, Ferry Lane, Rainham, Essex, RM13 9UL	690 00
C03	Container Sales & Hire Limited	56 New Road, Porthcawl, Mid Glamorgan, CF36 5DG	3,543 65
C01	CTH Tanker Services Limited	Francis House, Shobnall Road, Burton On Trent, Staffs, DE14 2BB	575 00
E02	Eastern Business Systems	Units 1 & 2 Roundtree Close, Sprowston, Norwich, Norfolk, NR7 8SX	2,060 70
E00	E-On Energy Limited	Newland House, 49 Mount Street, Nottingham, NG1 6PG	901 14
E01	Essex & Suffolk Water	Customer Centre, PO Box 292, Durham, DH1 9TX	0 00
F00	Fast Forward	Bon Accord House, Castle Road, Eurolink Commercial Park, Sittingbourne, Kent ME10 3SJ	2,070 00
H05	H Varley	Unit 5, Century Park, Pacific Road, Altrincham, WA14 5BJ	411 35
H00	H M Customs & Excise	Southern Region Debt Management,, Compass House, Romsey Road, Maybush, Southampton, SO16 4HP, (For the attention of Des Callow)	0 00
H02	Havering London	Revenues Services, Finance and Commercial Group, London Borough of Havering, Town Hall, Romford, RM12 6RJ	1,869 50
H03	HM Revenue & Customs	VAT Operations Insolvency, Queens Dock, Liverpool, L74 4AF	102,000 00
H04	HM Revenue & Customs	Enforcement Office, Durrington Bridge House, Barrington Road, Worthing, BN12 4SE	190,000 00
H01	HM Revenue & Customs (ICHU)	Room BP3202, Warkworth House, Beniton Park View, Longbenton, Newcastle Upon Tyne NE12Z	0 00
J01	Imageteck UK Limited	Unit 10 Cockriddan Farm, Brentwood Road, Herongate, Brentwood, Essex, CM13 3LH	312 80
J00	Instant Awnings	Unit 4, Knights Park,, Knights Way, Battlefield Enterprise Park Shrewsbury, SY1 3AB	1,138 74
J01	J R Rixon & Sons Limited	Witham House, 45 Spyvee Street, Hull, HU8 7JR	5,409 20
J00	JCT600 Contracts Limited	Tordoff House, Apperley Bridge, West Yorkshire, BD10 0PQ	186 86
L00	Largo		51 18

arrisons

pw Truckwash Limited

- Company Creditors

py	Name	Address	£
L01	Longvale Limited	Lancaster Park, Needwood, Burton On Trent, Staffs, DE13 9PD	196 47
L02	LPWGR Limited - In Administration	c/o Harrisons, 4 St Giles Court, Southampton Street, Reading, RG1 2QL	73 332 00
M01	MDL Truckwash Limited	c/o James Graham House, Cranleigh Close, Sanderstead, Surrey, TR2 9LH	0 00
M00	Mobile Fleetwash UK Limited	Interwood House, Stafford Avenue, Hornchurch, Essex, RM11 2ER	533 41
M00	Mr L P Moon	The Mansion House, Heaton Lodge, Huddersfield, West Yorkshire, HD5 0PW	12,014 92
N00	National Westminster Bank Plc	Station Lane, Upminster, Essex, RM14 2UD	1,341 12
N01	Northumbrian Water	Po Box 300, Durham, DH1 9WQ	0 00
O00	O2 Hardware	38 West Road, Ponton, Sleaford, Lincs, NG34 0NA	270 08
P00	P Scott Transport	38 Thurrock Commercial Centre, Purfleet Industrial Park, London Road, Averkey, Essex, CM13 3LH	76 32
R00	R & J Turner		307 15
R02	R Leadbetter	17/18 Juliet Way, Purfleet Industrial Park, Averley, Essex, RM15 4YD	400 00
R01	Regional Waste Recycling (Commercial) Ltd	12 Barbers Road, Stratford, London, E15 2PH	2 295 40
R03	Roadchef	Roadchef House, Norton Lanes MSA, Betty's Lane, Norton Canes, Cannock, Staffordshire, WS11 9UX	18,469 35
S00	Sharp Road Markings	The Old Barn, Manor Road, Shurlock Row, Berkshire, RG10 0PY	232 65
S01	Solution Centre	York House, York Street, Wigan, WN3 4BY	2,053 43
S02	Speedy Space Limited	LPW House, 2B Suttons Lane, Hornchurch, Essex, RM12 6RJ	363 78
T02	The Moon Pension Scheme	111-119 Newfoundland Road, Bristol, BS2 9LU	271 15
T03	Thomas Silvery Limited	Business Rates Section PO Box 1, Civic Offices, New Road, Grays, Essex, RM17 6SL	757 42
T00	Thurrock Council	93 Hemming Road, Washford Industrial Estate, Redditch, B98 0EA	1,908 81
T04	Top Service Limited	County House, Basehill Road, Cheltenham, GL50 3BA	134 55
T01	Total Butler Limited		0 00
U00	United Utilities	Nexus House, 2 Cray Road, Sidcup, Kent, DA14 5DA	95 32
V00	Vantis Plc	The Civic Centre, Ferrybridge Road, Castleford, Wakefield, WF10 4JH	0 00
W00	Wakefield Metropolitan District Council	Blondville Street, Coventry, CV3 5QX	2 268 65
W02	Warwicks Utilities Limited	2 Vantage Court, Tickford Street, Newport Pagnall, Bucks	15,846 05
W03	Welcome Break Limited	1 Cleavedon Walk, Nailsea, Bristol, BS48 1WVW	20,654 72
W01	Wessex Water	Yorkshire Water, PO Box 52, Bradford, BD3 7YD	0 00
Y00	Yorkshire Water		1,990 14

arrisons
PW Truckwash Limited
- Company Creditors

Key	Name	Address	£
5	Entries Totalling		1,014,750 71

PW Truckwash Limited
- Shareholders

Key	Name	Address	Pref	Ord	Other	Total
L00	LPW Group Limited - In Administration	c/o Harrisons, 4 St Giles Court, Southampton Street, Reading, RG1 2QL	0	10,000	0	10 000
Entries Totalling						10,000

Signature

arrisons
PW Truckwash (MSA) Limited
- Company Creditors

Pay	Name	Address	£
C00	CAC (UK) Limited	Bellerive house 3 Muirfield Crescent, Docklands, London, E14 9SZ	10,012 00
H00	H M Customs & Excise	Southern Region Debt Management,, Compass House, Romsey Road Maybush Southampton, SO16 4HP, (For the attention of Des Callow)	0 00
H02	HM Revenue & Customs	VAT Operations Insolvency, Queens Dock, Liverpool, L74 4AF	0 00
H03	HM Revenue & Customs	Enforcement Office, Durrington Bridge Housde, Barrington Road, Worthing, BN12 4SE	0 00
H01	HM Revenue & Customs (ICHU)	Room BP3202, Warkworth House, Benton Park View, Longbenton, Newcastle Upon Tyne NE1ZZ	0 00
M00	Mt L P Moon	The Mansion House, Heaton Lodge, Huddersfield, West Yorkshire, HD5 0PW	0 00
N00	National Westminster Bank Plc	Station Lane, Upminster, Essex, RM14 2UD	0 00
V00	Vantis Plc	Nexus House, 2 Cray Road, Sidcup, Kent, DA14 5DA	0 00
Entries Totalling			10,012 00

Harrisons
 LPW Truckwash (MSA) Limited
 - Shareholders

Key	Name	Address	Pref	Ord	Other	Total
L00	LPW Group Limited	c/o Harrisons, 4 St Giles Court, Southampton Street, Reading, RG1 2QL	0	100	0	100
Entries Totalling						100

Signature

LPWGP

LPW Group Limited

SIP 9 - Time & Cost Summary

Period 07/12/09 29/01/10

Time Summary

Hours						Time Cost (£)	Average hourly rate (£)
Classification of work function	Partner	Manager	Other Senior Professionals	Assistants & Support Staff	Total Hours		
Administration & planning	0 00	0 10	10 50	3 50	14 10	2 396 00	169 93
Investigations	0 00	0 00	0 00	0 00	0 00	0 00	0 00
Realisations of assets	0 00	0 00	0 00	0 00	0 00	0 00	0 00
Trading	0 00	0 00	0 00	0 00	0 00	0 00	0 00
Creditors	0 00	0 00	0 30	1 50	1 80	207 00	115 00
Case specific matters	0 00	0 00	0 00	0 00	0 00	0 00	0 00
Brought forward time	0 00	0 00	0 00	0 00	0 00	0 00	0 00
In House Legal	0 00	0 00	0 00	0 00	0 00	0 00	0 00
Total Hours	0 00	0 10	10 80	5 00	15 90	2 603 00	163 71
Total Fees Claimed						0 00	

LPWFC

LPW Fleetcare Limited

SIP 9 - Time & Cost Summary

Period 07/12/09 29/01/10

Time Summary

Classification of work function	Hours					Time Cost (£)	Average hourly rate (£)
	Partner	Manager	Other Senior Professionals	Assistants & Support Staff	Total Hours		
Administration & planning	0 00	0 00	10 70	2 65	13 35	2 318 00	173 63
Investigations	0 00	0 00	0 00	0 00	0 00	0 00	0 00
Realisations of assets	0 00	7 00	0 00	0 00	7 00	1 575 00	225 00
Trading	0 00	0 00	0 00	0 00	0 00	0 00	0 00
Creditors	0 00	5 00	0 30	1 50	6 80	1 332 00	195 88
Case specific matters	0 00	0 00	0 00	0 00	0 00	0 00	0 00
Brought forward time	0 00	0 00	0 00	0 00	0 00	0 00	0 00
In House Legal	0 00	0 00	0 00	0 00	0 00	0 00	0 00
Total Hours	0 00	12 00	11 00	4 15	27 15	5 225 00	192 45
Total Fees Claimed						0 00	

LPWTW

LPW Truckwash Limited

SIP 9 - Time & Cost Summary

Period 07/12/09 29/01/10

Time Summary

Classification of work function	Hours					Time Cost (£)	Average hourly rate (£)
	Partner	Manager	Other Senior Professionals	Assistants & Support Staff	Total Hours		
Administration & planning	0 00	0 00	10 70	2 55	13 25	2 304 00	173 89
Investigations	0 00	0 00	0 00	0 00	0 00	0 00	0 00
Realisations of assets	0 00	7 00	0 00	0 00	7 00	1 575 00	225 00
Trading	0 00	0 00	0 00	0 00	0 00	0 00	0 00
Creditors	0 00	7 00	0 50	1 60	9 10	1,830 00	201 10
Case specific matters	0 00	0 00	0 00	0 00	0 00	0 00	0 00
Brought forward time	0 00	0 00	0 00	0 00	0 00	0 00	0 00
In House Legal	0 00	0 00	0 00	0 00	0 00	0 00	0 00
Total Hours	0 00	14 00	11 20	4 15	29 35	5 709 00	194 51
Total Fees Claimed						0 00	

LPWMSA LPW Truckwash (MSA) Limited

SIP 9 - Time & Cost Summary

Period 07/12/09 29/01/10

Time Summary

Classification of work function	Hours					Time Cost (£)	Average hourly rate (£)
	Partner	Manager	Other Senior Professionals	Assistants & Support Staff	Total Hours		
Administration & planning	0 00	0 00	10 50	2 65	13 15	2 276 00	173 08
Investigations	0 00	0 00	0 00	0 00	0 00	0 00	0 00
Realisations of assets	0 00	0 00	0 00	0 00	0 00	0 00	0 00
Trading	0 00	0 00	0 00	0 00	0 00	0 00	0 00
Creditors	0 00	0 00	0 00	1 50	1 50	150 00	100 00
Case specific matters	0 00	0 00	0 00	0 00	0 00	0 00	0 00
Brought forward time	0 00	0 00	0 00	0 00	0 00	0 00	0 00
In House Legal	0 00	0 00	0 00	0 00	0 00	0 00	0 00
Total Hours	0 00	0 00	10 50	4 15	14 65	2 426 00	165 60
Total Fees Claimed						0 00	

1. HARRISONS FEE POLICY

Charge out rates and policy regarding staff allocation, support staff, the use of subcontractors and the recharge of disbursements

The following information relating to the policy of Harrisons is considered to be relevant -

2 CHARGE OUT RATES

With effect from 1 April 2009 the following hourly charge out rates apply to all assignments undertaken by Harrisons -

	£
Partners	300-400
Managers	200-275
Senior Case Supervisors	175-200
Case Supervisors	100-160
Assistants	75-100

3 STAFF ALLOCATION, SUPPORT STAFF & THE USE OF SUBCONTRACTORS

We take an objective and practical approach to each assignment which includes active partner involvement from the outset. Other members of staff will be assigned on the basis of experience and specific skills to match the needs of the case. Time spent by secretarial and other support staff on specific case related matters, e.g. report despatching, is charged. Details of any subcontractor(s) used are given in the attached report.

4. PROFESSIONAL ADVISORS

Details of any professional advisor(s) used are given in the attached report. Unless otherwise indicated the fee arrangement for each will be based on hourly charge out rates, which are reviewed on a regular basis, together with the recovery of relevant disbursements.

The choice of professional advisors will be based around a number of factors including, but not restricted to, their expertise in a particular field, the complexity or otherwise of the assignment and their geographical location.

5. DISBURSEMENTS

Specific expenditure relating to the administration of a particular case is recoverable without approval and is referred to as a "category 1 disbursements". Category 1 disbursements will generally comprise supplies of incidental services specifically identifiable to the case, typical for items such as identifiable telephone calls, postage, case advertising, invoiced travel and properly reimbursed expenses. Included will be services specific to the case where these cannot practically be provided internally such as printing, room hire and document storage.

Where we propose to recover costs which, whilst being in the nature of expenses or disbursements, may include an element of shared or allocated costs (such as room hire, document storage or communication facilities provided by us) they must be disclosed and be authorised by those responsible for approving the insolvency practitioners' remuneration. Such expenditure is referred to as a "category 2 disbursement". The following items of expenditure are recharged on this basis and are believed to be in line with the cost of external provision -

Photocopying	15p a sheet
Letterhead	12p a sheet
Fax	40p a sheet
Mileage	60p per mile
Meeting Room	£50
Registered Office Fee	£60 per annum
Document Storage	Storage charge of £3 per box per quarter

ENGLAND AND WALES

2 The nature of administration

- as a company is a going concern or
- as a company is a going concern or it is a company as a whole than could be likely if the company were wound up without first being in administration

- realising property in order to make a distribution to secured or preferential creditors

The creditors have the right to appoint a committee with a minimum of 3 and a maximum of 5 members. One of the functions of the committee is to determine the basis of the administrator's remuneration. The committee is normally established at a meeting of creditors, which the administrator is required to hold within a maximum of 10 weeks from the beginning of the administration to consider his proposals. The administrator must call the first meeting of the committee within 6 weeks of its establishment and subsequent meetings must be held either at specified dates agreed by the committee or when a member of the committee asks for one, or when the administrator decides he needs to hold one. The committee has power to summon the administrator to attend before it and provide information about the exercise of his functions.

11 The basis for fixing the administrator's remuneration is set out in Rule 2.106 of the Insolvency Rules 1986, which states that it shall be fixed either

1. is for the creditors' committee (if there is one) to determine on which of these bases the remuneration is to be fixed, and if it is fixed as a percentage, to fix the percentage to be applied. Rule 2.106 says that in arriving at its decision the committee shall have regard to the following matters:

- 4.2 If there is no creditors' committee, or the committee does not make the requisite determination, the administrator's remuneration may be fixed by a resolution of a meeting of creditors having regard to the same matters as the committee would. If the remuneration is not fixed in any of these ways it will be fixed by the court on application by the administrator.

In this case, if there is no creditors' committee or the committee does not make the requisite determination, the remuneration may be fixed by the approval of

- If the administrator has made or intends to make a distribution to preferential creditors -

- Laying regard to the same matters as the committee would

+ + resolution of creditors may be obtained by correspondence

```
51      When seeing file approval
```

- The nature of the approval being sought,
- The stage during the administration of the case at which it is being sought, and
- The size and complexity of the case.

The administrator should see a creditor at least once during the course of the administration or he should always provide an up-to-date receipts and payments account. The administrator should also see the creditors at least once. The administrator should discuss with the committee or the creditors the time spent, and the charge on value in the particular case. It is not necessary to see all the creditors. It is appropriate to see additional information as may reasonably be required in regard to the size and complexity of the case. The administrator should also provide a succinct explanation of what the administrator has achieved and how it has achieved to enable the value of the exercise to be assessed. The administrator should also see the administrator's report, which can be a statutory obligation that might be seen to bring no agreed value for creditors) and to establish the time has been properly spent on the case. That assessment, if it need to be made having regard to the time spent and the rates at which that time was charged, bearing in mind the complexity of the case, and the administrator's assessment of the case, and it may be necessary for the administrator to provide an analysis of the time spent on the case, and the administrator's assessment of the case. The degree of detail of the circumstances of the case, it will be helpful to be aware of the professional guidance. The administrator should also see the administrator's report, which can be a statutory obligation that might be seen to bring no agreed value for creditors) and to establish the time has been properly spent on the case. That assessment, if it need to be made having regard to the time spent and the rates at which that time was charged, bearing in mind the complexity of the case, and the administrator's assessment of the case, and it may be necessary for the administrator to provide an analysis of the time spent on the case, and the administrator's assessment of the case. The degree of detail of the circumstances of the case, it will be helpful to be aware of the professional guidance. The administrator should also see the administrator's report, which can be a statutory obligation that might be seen to bring no agreed value for creditors) and to establish the time has been properly spent on the case. That assessment, if it need to be made having regard to the time spent and the rates at which that time was charged, bearing in mind the complexity of the case, and the administrator's assessment of the case, and it may be necessary for the administrator to provide an analysis of the time spent on the case, and the administrator's assessment of the case. The degree of detail of the circumstances of the case, it will be helpful to be aware of the professional guidance.

- The nature of the case
- The complexity of the case
- The nature of the assets
- The nature of the liabilities
- Any other case specific matters

The report should also include an outline of the nature of the assignment and the administrator's own initial assessment. It should also include the following information:

- The nature of the case, particularly those that affect the amount of the fee
- The nature of the assets and liabilities
- The nature of the assets and liabilities, particularly in relation to agreeing the strategy of the assignment, budgeting, time recording, etc.
- The nature of the assets and liabilities, particularly in relation to agreeing the strategy of the assignment, budgeting, time recording, etc.
- The nature of the assets and liabilities, particularly in relation to agreeing the strategy of the assignment, budgeting, time recording, etc.

It should be borne in mind that the degree of analysis and form of presentation should be proportionate to the size and complexity of the case. In smaller cases not all categories of activity will always be relevant, whilst further analysis may be necessary in larger cases.

- 5.1.4 Where the fee is charged on a percentage basis the administrator should provide details of any work which has been or is intended to be sub-contracted out which would normally be undertaken directly or by an administrator or his staff.

5.2 After Fee Approval

Where a resolution fixing the basis of fees is passed at any creditors' meeting held before he has substantially completed his functions, the administrator should notify the creditors of the details of the resolution in his next report or circular to them. In all subsequent reports to creditors the administrator should specify the amount of remuneration he has drawn in accordance with the resolution. Where the fee is based on time costs he should also provide details of the time spent and charge-out value to date and any material changes in the rates charged for the various grades since the resolution was first passed. He should also provide such additional information as may be required in accordance with the principles set out in paragraph 5.1.3. Where the fee is charged on a percentage basis the administrator should provide the details set out in paragraph 5.1.4 also regarding work which has been sub-contracted out.

5.3 Expenses and disbursement

There is no statutory requirement for the committee or the creditors to approve the drawing of expenses or disbursements. However, professional guidance issued to insolvency practitioners requires that where the administrator proposes to recover costs which, whilst being in the nature of expenses or disbursements, may include an element of shared or allocated costs (such as room hire, document storage or communication facilities provided by the administrator's own firm), they must be disclosed and be authorised by those responsible for approving his remuneration. Such expenses must be directly incurred on the case and subject to a reasonable method of calculation and allocation.

6 What if a creditor is dissatisfied?

- 6.1 If a creditor believes that the administrator's remuneration is too high he may, if at least 25 per cent in value of the creditors (including himself) agree, apply to the court for an order that it be reduced. If the court does not dismiss the application (which it may if it considers that insufficient cause is shown) the applicant must give the administrator a copy of the application and supporting evidence at least 14 days before the hearing. Unless the court orders otherwise the costs must be paid by the applicant and not as an expense of the administration.

7 What if the administrator is dissatisfied?

- 7.1 If the administrator considers that the remuneration fixed by the creditors' committee is insufficient he may request that it be increased by resolution of the creditors. If he considers that the remuneration fixed by the committee or the creditors is insufficient, he may apply to the court for it to be increased. If he decides to apply to the court he must give at least 14 days' notice to the members of the creditors' committee and the committee may nominate one or more of its members to appear or be represented on the application. If there is no committee, the administrator's notice of his application must be sent to such of the company's creditors as the court may direct and they may nominate one or more of their number to appear or be represented. The court may order the costs to be paid as an expense of the administration.

8 Other matters relating to fees

- 8.1 Where there are joint administrators it is for them to agree between themselves how the remuneration payable should be apportioned. Any dispute arising between them may be referred to the court, the creditors' committee or a meeting of creditors.

- 8.2 If the administrator is a solicitor and employs his own firm to act on behalf of the company, profit costs may not be paid unless authorised by the creditors' committee, the creditors or the court.

9 Provision of Information – Additional Requirements

Where the administrator is appointed on or after 1 April 2005 he must provide certain information about time spent on a case, free of charge, upon request by any creditor or the creditors' committee of the company.

The information which must be provided is –

- The total number of hours spent on the case by the administrator or staff assigned to the case,
- For each grade of staff, the average hourly rate at which they are charged and,
- The number of hours spent by each grade of staff in the relevant period.

The period for which the information must be provided is the period from appointment to the end of the most recent period of six months reckoned from the date of the creditor's request or, where he has vacated office, the date he vacated office.

The information must be provided within 25 days of receipt of the request by the administrator and requests must be made within 10 years from vacating office.