

**THE UNITED KINGDOM'S DISABLED PEOPLE'S COUNCIL**  
**(A COMPANY LIMITED BY GUARANTEE)**

**REPORT AND FINANCIAL STATEMENTS**  
**FOR THE YEAR ENDED 31 MARCH 2012**

<b><u>CONTENTS</u></b>	<b><u>Page</u></b>
Charity information	1
Trustees' report	2 – 7
Independent examiner's report	8
Statement of financial activities	9
Balance sheet	10 – 11
Notes to the financial statements	12 – 19

Registered charity number – 1068743

Company number – 3455202

SATURDAY



A63      \*A10BOG9R\*      #212  
22/12/2012  
COMPANIES HOUSE

**THE UNITED KINGDOM'S DISABLED PEOPLE'S COUNCIL  
(A COMPANY LIMITED BY GUARANTEE)**

**CHARITY INFORMATION**

**CHARITY NAME**

The United Kingdom's Disabled People's Council

**CHARITY REGISTRATION NUMBER**

1068743

**COMPANY REGISTRATION NUMBER**

3455202

**INDEPENDENT EXAMINERS**

Hollingdale Pooley

Bramford House

23 Westfield Park

BRISTOL

BS6 6LT

**BANKERS**

CafBank Limited

Kings Hill

West Malling

Kent

ME19 4TA

**PRINCIPAL ADDRESS AND  
REGISTERED OFFICE**

27 Old Gloucester Street

London

WC1N 3AX

**THE UNITED KINGDOM'S DISABLED PEOPLE'S COUNCIL  
(A COMPANY LIMITED BY GUARANTEE)**

**TRUSTEES' REPORT FOR THE YEAR ENDED 31 MARCH 2012**

The trustees present their report for the year ended 31 March 2012

**National Council**

Members of the National Council, who are directors for the purpose of company law and Trustees for the purpose of charity law, who served during the year and up to the date of this report are set out below

- Andrew Lee
- Julie Newman (Acting Chair)
- Nicholas Russell
- Claire Robinson
- Anne Novis (resigned 29 March 2012)
- Mark Harrison (resigned 29 March 2012)
- Rachel Hurst (resigned 29 March 2012)
- Tara Flood (resigned 29 March 2012)

**Recruitment of National Council Members**

The Articles of Association states that the National Council shall comprise

- The honorary officers (Chair, 2 Deputy Chairs, Secretary and Treasurer)
- Five delegates elected from under represented groups (black and ethnic, women, gay men and lesbians and young people)
- Four delegates elected from the Full Member organisations granted National Member status
- Ten delegates elected from the Full Member organisations granted Regional Member status

Elections take place at the Annual General Meeting. The National Council is permitted to act regardless of any vacancy provided that the number does not fall below the quorum which is 20% of those eligible to attend and vote.

**Induction and training of National Council Members**

A job description is made available for each officer post

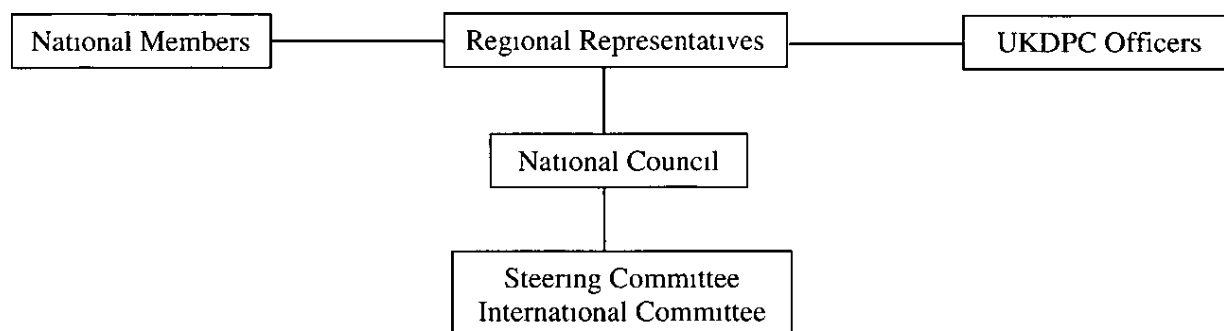
**Structure, governance and management**

The charity was incorporated under the Companies Act 1985 on 24 October 1997 as a company limited by guarantee and is governed by its Memorandum and Articles of Association. It was registered as a charity on 19 March 1998. The charity has adopted the working name of UKDPC.

**THE UNITED KINGDOM'S DISABLED PEOPLE'S COUNCIL  
(A COMPANY LIMITED BY GUARANTEE)**

**TRUSTEES' REPORT FOR THE YEAR ENDED 31 MARCH 2012**

**Organisation**



The diagram above shows UKDPC's structure, which consists of National Members' Groups Elected Regional Representatives National Members are either large organisations or groups that represent disabled people who would otherwise not have a voice on the Council National Council is UKDPC's policy making body Day to day running of UKDPC is undertaken by the Steering Committee which is made up of elected Officers and a number of National Council Members The International Committee funded by Action on Disability and Development continues to have a full programme of events

**Risk management**

The Trustees have introduced a risk management process to assess business risk and implement risk management strategies This involved identifying the types of risks the charity faces, prioritising them in terms of potential impact and likelihood of occurrence, and identifying means of mitigating the risks As part of this process the Trustees have reviewed the adequacy of the charitable company's current internal controls and an internal reference manual documents these The Trustees are pleased to report that the charitable company's current internal controls conform with the guidelines issued by the Charity Commission

**Objects**

The objects of the charitable company, as set out in the Memorandum and Articles of Association are -

To relieve the disability of people with physical, mental or sensory impairments and to further their independent and participation in the community

In shaping the charitable company's objectives for the year and planning its activities the Trustees have considered the Charity Commission's guidance on public benefit

**THE UNITED KINGDOM'S DISABLED PEOPLE'S COUNCIL  
(A COMPANY LIMITED BY GUARANTEE)**

**TRUSTEES' REPORT FOR THE YEAR ENDED 31 MARCH 2012**

**Financial Review**

During the year, the charity consolidated its financial position, with an unrestricted deficit for the year of £24,018. However, the charity still has unrestricted funds of £22,468.

The charity's main funders in the year were the Big Lottery, the Commonwealth Foundation, the United Nations, and the Platinum Trust. The Big Lottery funds the charity's main activities, the Disability Project and the Diverse Needs Research Project, through restricted grants. The Commonwealth Foundation funded training of disabled groups in the South Pacific through a restricted grant. The United Nations funded a Disability Rights Project through a restricted grant. The Platinum Trust provided a grant for core costs.

At the year end the charity had total funds of £221,505, of which £22,468 was held as unrestricted funds and £199,037 were held as restricted funds.

**Reserves**

The Trustees have reviewed the reserves of the charitable company. This review encompassed the nature of the income and expenditure accounts, the need to match variable income with fixed commitments and the nature of the reserves. The review concluded that to allow the charitable company to be managed efficiently and to provide a buffer for uninterrupted services, a small general free reserve should be maintained. As further explained in the Review of Activities there is no requirement to hold significant unrestricted reserves. At the year end, free reserves totalled £22,468 (2011 - £43,954), which represents around 1 month of total expenditure. The trustees are looking at ways to increase free reserves.

**Review of Activities and Future Developments**

Due to the impact of the government's austerity measures, many organisations in the voluntary sector have experienced a difficult financial period over the past twelve months. This has been quite notable at UKDPC following the end of the Disability LIB project in June 2011. We have made several appeals for funding and submitted applications to various Trusts and Foundations to support the work of the organisation, however the responses received were not as positive as we had anticipated.

We are pleased to report that the UKDPC has delivered successfully on the projects objectives and is now managing the Disability LIB website. Furthermore, despite the financial challenges we have faced, UKDPC has continued to work with its members and service delivery partners on promoting the rights and independent living for disabled people as noted on the last financial report.

Our work continues to build on the aspirations of the UN Convention on the Rights of Disabled People and we continue to work with our member organisations to represent the rights of disabled people at government level both in the UK and internationally.

**THE UNITED KINGDOM'S DISABLED PEOPLE'S COUNCIL  
(A COMPANY LIMITED BY GUARANTEE)**

**TRUSTEES' REPORT FOR THE YEAR ENDED 31 MARCH 2012**

**Our Campaigning work**

UKDPC has been involved in the planning and organisation of a national demonstration against the cuts to disabled people's benefits and services, via the Hardest Hit Campaign. The demonstrations involving a mass lobby of parliament, rally and marches took place in May 2011 followed by local and regional campaigns in October 2011. Demonstrations were held across the country in various cities with the Mass Lobby being held in London. This was organised in partnership with The Disability Benefits Consortium and DPOs.

We have also been supporting other campaigns being organised by other groups of disabled people for the same cause, such as Pat's Petition to campaign against the disability benefit cuts.

Recently we collaborated with Inclusion London in March 2012 to provide a response to the Government's Consultation on their Disability Strategy which involved a consultation event, followed by a joint report which was submitted to the ODI.

**Our International Work**

UKDPC's International Committee (IC) continued to develop its partnership work in Europe as well as in other countries across the globe. In October 2011 UKDPC signed a Memorandum of Understanding with the 'African Decade of Disabled People' for collaborative working on the promotion of Human Rights and Capacity Building of DPOs in Africa. Alongside this, UKDPC has continued its representation at the Disabled People's International (DPI) International Assembly in Durban, at which we had initiated a young disabled people's workshop at the conference following which DPI adopted a working strand for young disabled people.

In Europe, we have continued our membership with the European Disability Forum (EDF) and have attended a number of Board Meetings throughout the year. We are pleased to report that UKDPC continues to be an exemplar DPO sharing best practice with our colleagues in Europe.

**Our projects and other work**

Our participatory research project 'The Aspirations and Priorities of Disabled People in Diverse Situations' funded by the Big Lottery Fund, has continued to develop successfully. The project researches the aspirations and priorities of disabled people with the aim of influencing social policy through the use of art. The project has completed murals in Norwich and Frome and will continue to work in Bristol and London before starting on the final stage in the third year.

Following the Hardest Hit Campaigns, UKDPC has continued to work and develop its relationship with Scope and other DPOs. Scope had agreed to the secondment of the DPO Business Liaison Development Manager for a period of 6 months (1 day per week). During this

**THE UNITED KINGDOM'S DISABLED PEOPLE'S COUNCIL  
(A COMPANY LIMITED BY GUARANTEE)**

**TRUSTEES' REPORT FOR THE YEAR ENDED 31 MARCH 2012**

time Manager assisted with the transfer of the Disability LIB resources to UKDPC, further development of the UKDPC Disability Rights Watch UK project and development of the Disability LIB end of project recommendations

UKDPC held its National Conference in November 2011 bringing together our member DPOs to discuss and consult on the work of UKDPC. We also delivered two trainings on the UNCRPD and Human Rights in London and in Newcastle as part of the Disability Rights Watch UK project

**Our membership**

A Peninsula HR membership incentive was offered to all members whereby our member DPOs had access to a free 24 hour HR and Employment related advice line with Peninsula Business Services

UKDPC attended a range of consultations held by LOCOG and led on debates regarding the issuing of Paralympic Tickets

UKDPC played an active role in the ODI consultation on the development of the Government's disability equality strategy

We successfully applied to the ODI's Strengthening DPULO's Programme for funding to take on a Membership Services Development Manager to support with our membership services. We are now looking to recruit a suitable individual for this position

We have continued work with the ODI via the UN Convention Working Group to guide the ODI on the development of the State Report to the UN Committee

**Funding**

We have continued to make applications for funding to various organisations but these have not been as fruitful to the extent we would have expected. However, we would like to send our sincere gratitude to the Platinum Trust who agreed to extend their funding for us for a further 12 months beyond the original commitment

**Looking Forward into 2012/2013**

Looking forward into 2012/2013, we remain optimistic. This will be a critical time for us as the organisation's long term security will depend on the organisation raising unrestricted funds, to ensure that the organisation can meet its office overheads. With the Membership Services Development Officer, we are enthusiastic about developing our membership base and making services available that would be of benefit to our members, thereby strengthening the DPO sector and enabling our members to deliver services in a much more cost effective manner

**THE UNITED KINGDOM'S DISABLED PEOPLE'S COUNCIL  
(A COMPANY LIMITED BY GUARANTEE)**

**TRUSTEES' REPORT FOR THE YEAR ENDED 31 MARCH 2012**

We will continue to develop the work with our international partners and look forward to strengthening our work with the African decade as well as initiating new partnerships with other Disabled People's Organisations worldwide

**Statement of directors' responsibilities**

The directors are responsible for preparing the annual report and the financial statement in accordance with applicable law and United Kingdom Generally Accepted Accounting Practice

Company law requires the directors to prepare financial statement for each financial year which give a true and fair view of the state of affairs of the company and of the net incoming resources and application of resources of the company for that period. In preparing these financial statements, the directors are required to

- Select suitable accounting policies and then apply them consistently,
- Make judgements and estimates that are reasonable and prudent,
- Prepare the financial statements on the going concern basis unless it is inappropriate to presume that the company will continue to operate

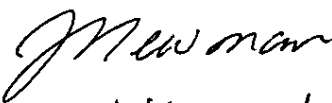
The directors are responsible for keeping proper accounting records that disclose with reasonable accuracy at any time the financial position of the company and enable them to ensure that the financial statements comply with the Companies Act 2006. They are also responsible for safeguarding the assets of the company and hence taking reasonable steps for the prevention and detection of fraud and other irregularities.

In determining how amounts are presented in the Statement of Financial Activities and the balance sheet, the directors have had regard to the substance of the reported transaction or arrangement, in accordance with generally accepted accounting principles or practice.

**Independent Examiner**

The Independent Examiner, Hollingdale Pooley of Bramford House, 23 Westfield Park, Bristol, BS6 6LT, will offer himself for re-appointment at the general meeting in accordance with the Companies Act 2006.

On behalf of the National Council

  
Trustee JNEWMAN

Date 16 DECEMBER 2012



## **INDEPENDENT EXAMINER'S REPORT TO THE TRUSTEES OF THE UNITED KINGDOM'S PEOPLE'S COUNCIL (LIMITED BY GUARANTEE)**

I report on the accounts of the company for the year ended 31 March 2012, which are set out on pages 9 to 19

### **Respective responsibilities of trustees and examiner**

The trustees (who are also the directors of the company for the purposes of company law) are responsible for the preparation of the accounts. The trustees consider that an audit is not required for this year under section 144 of the Charities Act 2011 (the 2011 Act) and that an independent examination is needed. The charity is required by company law to prepare accrued accounts.

Having satisfied myself that the charity is not subject to audit under company law and is eligible for independent examination, it is my responsibility to

- examine the accounts under section 145 of the 2011 Act,
- to follow the procedures laid down in the general Directions given by the Charity Commission under section 145(5) of the 2011 Act, and
- to state whether particular matters have come to my attention

### **Basis of independent examiner's report**

My examination was carried out in accordance with the general Directions given by the Charity Commission. An examination includes a review of the accounting records kept by the charity and a comparison of the accounts presented with those records. It also includes consideration of any unusual items or disclosures in the accounts, and seeking explanations from you as trustees concerning any such matters. The procedures undertaken do not provide all the evidence that would be required in an audit and consequently no opinion is given as to whether the accounts present a 'true and fair view' and the report is limited to those matters set out in the statement below.

### **Independent examiner's statement**

In connection with my examination, no matter has come to my attention

(1) which gives me reasonable cause to believe that in any material respect the requirements

- to keep accounting records in accordance with section 386 of the Companies Act 2006, and
- to prepare accounts which accord with the accounting records, comply with the accounting requirements of section 396 of the Companies Act 2006 and with the methods and principles of the Statement of Recommended Practice Accounting and Reporting by Charities

have not been met, or

(2) to which, in my opinion, attention should be drawn in order to enable a proper understanding of the accounts to be reached



Name:

Mark Pooley,

Relevant professional qualification or body:

ICAEW

Address: Hollingdale Pooley, Bramford House, 23 Westfield Park, Clifton, Bristol BS6 6LT.

Date: 16/12/2012

**THE UNITED KINGDOM'S DISABLED PEOPLE'S COUNCIL**  
**(A COMPANY LIMITED BY GUARANTEE)**

**STATEMENT OF FINANCIAL ACTIVITIES**  
**FOR THE YEAR ENDED 31 MARCH 2012**

		2012			2011
		Unrestricted funds £	Restricted funds £	Total funds £	Total funds £
<b>INCOME AND EXPENDITURE</b>	Notes				
<b>INCOMING RESOURCES</b>					
<b>Incoming resources from</b>					
<b>Generated funds</b>					
<i>Voluntary income</i>					
Grants and donations	3	23,123	247,024	270,147	446,420
<i>Investment income</i>					
Bank interest		556	-	556	365
<b>Incoming resources from</b>					
<b>charitable activities</b>	3	41,842	-	41,842	45,604
<b>TOTAL INCOME</b>		65,521	247,024	312,545	492,389
<b>RESOURCES EXPENDED</b>					
<b>Charitable expenditure</b>					
Capacity Building		80,017	74,218	154,235	212,114
European Fund		-	4,700	4,700	-
International Committee		-	6,551	6,551	1,625
Researching Diversity Needs		11,431	97,265	108,696	33,806
UN Disability Rights Project		-	21,134	21,134	28,102
Training project – South Pacific		-	8,008	8,008	82,686
<b>Governance costs</b>		2,660	-	2,660	2,589
<b>TOTAL EXPENDITURE</b>	4	94,108	211,876	305,984	360,922
<b>Net incoming/(Outgoing) Resources</b>					
<b>Before transfers between funds</b>	5	(28,587)	35,148	6,561	131,467
<b>Transfers</b>		4,569	(4,569)	-	-
<b>Net income/(expenditure)</b>					
<b>for the year</b>		(24,018)	30,579	6,561	131,467
<b>Total funds brought forward</b>		46,486	168,458	214,944	83,477
<b>TOTAL FUNDS CARRIED FORWARD</b>		22,468	199,037	221,505	214,944

The notes on pages 12 to 19 form part of these financial statements

**THE UNITED KINGDOM'S DISABLED PEOPLE'S COUNCIL**  
**(A COMPANY LIMITED BY GUARANTEE)**

**BALANCE SHEET**  
**AT 31 MARCH 2012**

	Notes	<u>2012</u> £	<u>2011</u> £
FIXED ASSETS			
Tangible assets	7	6,990	11,011
		<hr/>	<hr/>
CURRENT ASSETS			
Grants receivable		-	10,000
Prepayments and other debtors		99	557
Cash at bank		232,528	213,602
		<hr/>	<hr/>
		232,627	224,159
		<hr/>	<hr/>
CREDITORS Amounts falling due within one year			
Trade creditors		12,444	17,301
Other taxation and social security		2,593	-
Accruals		3,075	2,925
		<hr/>	<hr/>
		18,112	20,226
		<hr/>	<hr/>
NET CURRENT ASSETS		214,515	203,933
		<hr/>	<hr/>
TOTAL ASSETS LESS CURRENT LIABILITIES		221,505	214,944
		<hr/>	<hr/>
FUNDS			
Unrestricted funds		22,468	46,486
Restricted funds	8	199,037	168,458
		<hr/>	<hr/>
	9	221,505	214,944
		<hr/>	<hr/>

The Trustees are satisfied that the company is entitled to exemption from the provisions of the Companies Act 2006 (the Act) relating to the audit of the financial statements for the year by virtue of section 477, and that no member or members have requested an audit pursuant to section 476 of the Act

**THE UNITED KINGDOM'S DISABLED PEOPLE'S COUNCIL**  
**(A COMPANY LIMITED BY GUARANTEE)**

**BALANCE SHEET**

**AT 31 MARCH 2012 (continued)**

The Trustees acknowledge their responsibilities for

- (i) ensuring that the company keeps adequate accounting records which comply with section 386 of the Act, and
- (ii) preparing financial statements which give a true and fair view of the state of affairs of the company as at the end of the financial year and of its profit or loss for the financial year in accordance with the requirements of section 393, and which otherwise comply with the requirements of the Act relating to financial statements, so far as applicable to the company

These financial statements have been prepared in accordance with the special provisions for small companies under Part 15 of the Companies Act 2006 and with the Financial Reporting Standard for Smaller Entities (effective April 2008)

These accounts have been delivered in accordance with the provisions applicable to companies subject to the small companies' regime

These financial statements were approved by the directors and authorised for issue on 16.12.2012, and are signed on their behalf by



JNEWMAN  
J NEWMAN  
Trustee

16 12 12  
Date

The notes on pages 12 to 19 form part of these financial statements

Company number – 3455202

**THE UNITED KINGDOM'S DISABLED PEOPLE'S COUNCIL**  
**(A COMPANY LIMITED BY GUARANTEE)**

**NOTES TO THE FINANCIAL STATEMENTS**  
**FOR THE YEAR ENDED 31 MARCH 2012**

**1 STATUS**

The United Kingdom's Disabled People's Council is a company limited by guarantee and does not have a share capital. Every member of the company undertakes to contribute such amount as may be required (not exceeding £1) to the company assets, if it should be wound up, whilst being a member for a payment of the company's debts and liabilities contracted before ceasing to be a member. The company is also a charity registered with the Charity Commissioners (number 1068743) and is not subject to United Kingdom taxation.

**2 ACCOUNTING POLICIES**

**(a) Basis of accounting**

The financial statements are prepared under the historical cost convention, and in accordance with the Financial Reporting Standard for Smaller Entities (effective April 2008), the Companies Act 2006, and follow the recommendations in Accounting and Reporting for Charities: Statement of Recommended Practice issued in March 2005. The charity has taken advantage of the exemption in Financial Reporting Standard No 1 from the requirement to produce a cash flow statement.

**(b) Incoming resources**

**Grants and donations**

Income from donations and grants, including capital grants, is included in incoming resources when these are receivable, except as follows:

- when donors specify that the grants and donations given to the company must be used in future accounting periods, the income is deferred to those periods, and
- when donors impose conditions which have to be fulfilled before the company becomes entitled to use such income, the income is deferred and not included in incoming resources until the pre-conditions have been met.

When donors specify that grants and donations, including capital grants, are for particular restricted purposes, which do not amount to pre-conditions regarding entitlement, this income is included in incoming resources of restricted funds when receivable.

**Charitable trading activities**

Income from charitable trading activities is included in the period in which the company is entitled to receipt.

**Interest receivable**

Interest is included in incoming resources when receivable by the company.

**THE UNITED KINGDOM'S DISABLED PEOPLE'S COUNCIL**  
**(A COMPANY LIMITED BY GUARANTEE)**

**NOTES TO THE FINANCIAL STATEMENTS**  
**FOR THE YEAR ENDED 31 MARCH 2012**

**2 ACCOUNTING POLICIES (continued)**

**(c) Resources expended**

Resources expended are included in the Statement of Financial Activities on an accruals basis, inclusive of any VAT which cannot be recovered

Expenditure on activities in furtherance of the charity's activities represents the costs in the delivery of its activities and services for its beneficiaries

Governance costs include those costs associated with meeting the constitutional and statutory requirements of the charity and include the reporting accountant's costs and costs of trustees' meetings

Resources expended are allocated to the particular activity where the cost relates directly to that activity. However, support costs are apportioned on the following basis, which is an estimate, based on staff time in the year, of the amount attributable to each activity

**(d) Operating leases**

Rentals applicable to operating leases where substantially all the benefits and risks of ownership remain with the lessor are charged to income and expenditure account as incurred

**(e) Pensions**

The company contributes to defined personal pension schemes maintained by staff. Contributions are charged in the year to which they relate

**(f) Value Added Tax**

Value added tax is not recoverable by the charitable company, and as such is included in the relevant cost in the Statement of Financial Activities and tangible fixed assets

**(g) Tangible fixed assets and depreciation**

Tangible fixed assets are stated at cost less depreciation. The costs of office furniture and equipment are written off over their expected useful lives of four years. Website development costs and computers are written off over three years

**THE UNITED KINGDOM'S DISABLED PEOPLE'S COUNCIL**  
**(A COMPANY LIMITED BY GUARANTEE)**

**NOTES TO THE FINANCIAL STATEMENTS (continued)**  
**FOR THE YEAR ENDED 31 MARCH 2012**

2 ACCOUNTING POLICIES (continued)

(i) Fund accounting

Funds held by the company are

Unrestricted general funds – these are funds which can be used in accordance with the charitable objects at the discretion of the trustees

Restricted funds – these are funds that can only be used for particular restricted purposes within the charitable objects of the company. Restrictions arise when specified by the donor or when funds are raised for particular restricted purposes

3 INCOMING RESOURCES	<u>2012</u>	<u>2011</u>
	£	£
<u>Grants &amp; Donations</u>		
<i>Unrestricted</i>		
Platinum Trust	22,500	25,000
Other donations	623	124
	<hr/>	<hr/>
	23,123	25,124
	<hr/>	<hr/>
<i>Restricted</i>		
Big Lottery Disability Project	70,068	131,991
Commonwealth Foundation	15,000	75,000
Big Lottery Diverse Needs Research	122,093	147,915
European Fund	-	4,700
UN Convention- Scope	26,500	54,940
International Committee ADD	-	6,750
International Committee DAA	8,000	-
International Committee Other	690	-
UN Convention- Disability Rights Watch	2,000	-
UN Convention- Office for Disability Issues	2,673	-
	<hr/>	<hr/>
	247,024	421,296
	<hr/>	<hr/>
TOTAL	270,147	446,420
	<hr/>	<hr/>

**THE UNITED KINGDOM'S DISABLED PEOPLE'S COUNCIL**  
**(A COMPANY LIMITED BY GUARANTEE)**

**NOTES TO THE FINANCIAL STATEMENTS (continued)**  
**FOR THE YEAR ENDED 31 MARCH 2012**

<u>Incoming resources from charitable activities</u>		
Membership fees	4,590	-
Access to work fees	525	1,225
Diversity research	20,163	14,222
Management fees- Big Lottery Disability Project	5,000	20,000
Management fees- UN Convention	6,000	9,000
Management fees- Commonwealth	4,814	-
Management fees- ADD International Committee	750	750
Other income	-	407
	<hr/>	<hr/>
	41,842	45,604
	<hr/>	<hr/>



**THE UNITED KINGDOM'S DISABLED PEOPLE'S COUNCIL**  
**(A COMPANY LIMITED BY GUARANTEE)**

**NOTES TO THE FINANCIAL STATEMENTS (continued)**  
**FOR THE YEAR ENDED 31 MARCH 2012**

4	RESOURCES EXPENDED	Support costs £	Int'l committ £	Researching Diversity Needs £	UN Disability Rights £	European Fund £	Training South Pacific £	Capacity building - DISLIB £	Govern costs £	2012 Total £	2011 Total £
	Staff costs	54,565	-	38,396	-	-	-	23,103	-	116,064	120,509
	Consultancy	5,699	-	-	-	-	-	8,923	-	14,622	37,199
	Recruitment costs	-	-	-	-	-	-	-	-	-	1,922
	Research and consultation costs	-	-	10,710	-	-	-	5,000	-	15,710	11,565
	Direct capacity building costs	-	-	-	-	-	-	18,199	-	18,199	30,573
	Training, subscriptions, conferences	1,849	-	14,887	4,452	-	8,008	-	-	29,196	86,602
	Video production costs	-	-	-	-	-	-	11,280	-	11,280	7,623
	Website maintenance	1,001	-	1,684	110	-	-	384	-	3,179	3,797
	Premises	6,850	-	6,000	-	-	-	1,420	-	14,270	9,984
	Office costs	4,315	-	-	-	-	-	562	-	4,877	10,944
	Travel and subsistence	-	6,218	5,078	7,133	-	-	-	-	18,429	16,974
	Publicity costs	308	-	-	-	-	-	1,972	-	2,280	1,842
	Legal and professional fees	2,861	-	10,961	7,000	-	-	3,360	-	24,182	4,981
	Insurance	832	-	-	-	-	-	-	-	832	217
	Depreciation	8,437	-	-	1,360	-	-	-	-	9,797	7,696
	Accountancy fees	-	-	-	-	-	-	-	2,660	2,660	2,589
	Bank charges	-	-	-	-	-	-	-	-	-	20
	Trustee expenses	1,027	-	8,349	-	-	-	15	-	9,391	-
	Membership services	2,264	333	-	-	4,700	-	-	-	7,297	5,885
	Miscellaneous costs	1,440	-	1,200	1,079	-	-	-	-	3,719	-
	Apportionment of										
	Support costs	(91,448)	-	11,431	-	-	-	80,017	-	-	-
		-	6,551	108,696	21,134	4,700	8,008	154,235	2,660	305,984	360,922

**THE UNITED KINGDOM'S DISABLED PEOPLE'S COUNCIL**  
**(A COMPANY LIMITED BY GUARANTEE)**

**NOTES TO THE FINANCIAL STATEMENTS (continued)**  
**FOR THE YEAR ENDED 31 MARCH 2012**

5	NET INCOMING/(OUTGOING) RESOURCES FOR THE YEAR	<u>2012</u>	<u>2011</u>
		£	£
	Net incoming/(outgoing) resources is stated after charging		
	For report	2,660	2,589
	For other services	-	-
		<u>          </u>	<u>          </u>
6	STAFF COSTS		
	Salaries	94,815	109,180
	Social security costs	9,914	11,329
		<u>          </u>	<u>          </u>
		104,729	120,509
		<u>          </u>	<u>          </u>
	Average number of persons employed	5	5
		<u>          </u>	<u>          </u>

There were no members of staff who received emoluments in excess of £60,000 per annum (2011 – Nil)

7	TANGIBLE FIXED ASSETS			Office	
		Website	Computers	Equipmt	Total
	COST	£	£	£	£
	At 1 April 2011	15,686	7,234	170	23,090
	Additions	4,080	1,697	-	5,777
		<u>          </u>	<u>          </u>	<u>          </u>	<u>          </u>
	At 31 March 2012	19,766	8,931	170	28,867
		<u>          </u>	<u>          </u>	<u>          </u>	<u>          </u>
	DEPRECIATION				
	At 1 April 2011	8,047	3,947	85	12,079
	Charge for the year	6,588	3,168	42	9,798
		<u>          </u>	<u>          </u>	<u>          </u>	<u>          </u>
	At 31 March 2012	14,635	7,115	127	21,877
		<u>          </u>	<u>          </u>	<u>          </u>	<u>          </u>
	NET BOOK VALUE				
	At 31 March 2012	5,131	1,816	43	6,990
		<u>          </u>	<u>          </u>	<u>          </u>	<u>          </u>
	At 31 March 2011	7,639	3,287	85	11,011
		<u>          </u>	<u>          </u>	<u>          </u>	<u>          </u>

**THE UNITED KINGDOM'S DISABLED PEOPLE'S COUNCIL**  
**(A COMPANY LIMITED BY GUARANTEE)**

**NOTES TO THE FINANCIAL STATEMENTS (continued)**  
**FOR THE YEAR ENDED 31 MARCH 2012**

**8 RESTRICTED FUNDS**

	Balance b/f £	Incoming resources £	Outgoing resources £	Transfer £	Balance c/f £
Big Lottery Disability Project	9,032	70,068	(74,218)	2,423	7,305
Big Lottery Diversity Needs	120,016	122,093	(97,265)	-	144,844
Big Lottery website	1,177	-	-	-	1,177
Commonwealth Foundation	-	15,000	(8,008)	(6,992)	-
International fund	6,695	8,690	(6,551)	-	8,834
European Fund	4,700	-	(4,700)	-	-
UN Convention	26,838	31,173	(21,134)	-	36,877
	<hr/>	<hr/>	<hr/>	<hr/>	<hr/>
	168,458	247,024	(211,876)	(4,569)	199,037
	<hr/>	<hr/>	<hr/>	<hr/>	<hr/>

The Big Lottery Disability Project is a fund to capacity build disability groups in the United Kingdom

The International fund is a fund to enable the charity to be represented at international conferences and meetings where issues surrounding disability are addressed

The Big Lottery website fund is a grant of £3,531 to enhance the charity's website. The grant was expended on this last year, with the website costs being capitalised. The expenditure for the year of £1,177 represents the depreciation.

The Big Lottery Diversity Needs fund is a fund to research diversity needs of the disabled. The grant was received in the latter part of the year and the project will continue into 2011/12.

The UN Convention fund is a fund for a disability rights project.

The Commonwealth Foundation fund is a fund for training disability groups in the South Pacific.

**THE UNITED KINGDOM'S DISABLED PEOPLE'S COUNCIL**  
**(A COMPANY LIMITED BY GUARANTEE)**

**NOTES TO THE FINANCIAL STATEMENTS (continued)**  
**FOR THE YEAR ENDED 31 MARCH 2012**

**9 ANALYSIS OF NET ASSETS BETWEEN FUNDS**

	Fixed assets £	Net current assets £	Total £
<u>Restricted funds</u>			
Big Lottery Disability Project	1,359	5,946	7,305
Big Lottery Diversity Needs	1,616	143,228	144,844
International fund	-	8,834	8,834
Big Lottery website fund	1,177	-	1,177
UN Convention	2,838	34,039	36,877
	<hr/>	<hr/>	<hr/>
	6,990	192,047	199,037
 Unrestricted funds	 -	 22,468	 22,468
	<hr/>	<hr/>	<hr/>
	6,990	214,515	221,505
	<hr/>	<hr/>	<hr/>

**10 RELATED PARTY TRANSACTIONS AND TRUSTEES' EXPENSES**

The Company is controlled by the trustees

No trustees received any remuneration in the year or in the previous year

Trustee expenses incurred in undertaking their duties of £9,391 were reimbursed during the year (2011 - £1,000)

There were no other transactions with related parties in the year