

**NORTH WALES DEAF ASSOCIATION
((CYMDEITHAS Y BYDDAR GOGLEDD CYMRU))**



**Annual Report and
Financial Statements**
for the year ended 31st March 2008

THURSDAY



AGR206QF

A47

22/01/2009

126

COMPANIES HOUSE

Company Limited by Guarantee No.2959589
Registered Charity No. 1048017

NORTH WALES DEAF ASSOCIATION

Contents

Chairman's and Manager's Introduction	2
Legal and Administrative Information	3
Organisational Chart	8
Directors' Report	9
Independent Examiners Report	22
Statement of Financial Activities (including Income and Expenditure Account)	23
Balance Sheet	24
Notes to the accounts	25

NORTH WALES DEAF ASSOCIATION

CHAIRMAN'S AND MANAGER'S INTRODUCTION

Welcome to the Annual Report and Financial Statement for North Wales Deaf Association for 2007/8.

During this year we have continued to provide the same services as in previous years and have hopefully provided a better service for more people with a hearing loss who live in North Wales. The following report contains information about all our services and the work we have done over the last 12 months.

Employing a fundraising officer has given us scope to add variety to the services we provide and this can be seen in the Heritage Trips organised for the Befriending Scheme and also the outings and events organised for the Conwy Family Support Group.

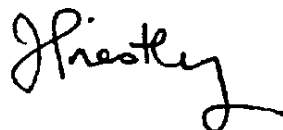
Our computer system has been updated this year with a new file server, computer screens and additional computers. Work has also been underway to put video clips in British Sign Language on our website and this should be up and running shortly.

The successful bid to the Big Lottery People and Places fund will see our services provided in the most isolated and rural areas of North Wales. At the time of writing the information officer has been in post for three months arranging talks and presentations. The mobile unit has been ordered and should be with us in January 2009 and the launch of the vehicle and an information day taking place in February 2009. So there is a lot to look forward to in the next financial year.

The questionnaire sent out to our members and users of services said they were on the whole happy with the services we provide and welcomed the idea of a mobile unit.

May we take this opportunity to thank all our volunteers, members, staff, supporters and funders who have help us continue to improve the quality of life for people with a hearing loss living in North Wales.

Jane Priestley
Manager



Tom Jones
Chairman



NORTH WALES DEAF ASSOCIATION

CYMDEITHAS BYDDAR GOGLEDD CYMRU

Report of the Management Committee for the year ended 31 March 2008

The Management Committee presents its report and audited financial statements for the year ended 31 March, 2008.

Reference and Administrative Information

Charity Name:	North Wales Deaf Association Cymdeithas Byddar Gogledd Cymru (NWDA)
Charity Registration Number:	1048017
Company Registration Number:	2959589
Registered Office and Operational Address	@ Quinton Hazell Glan y Wern Road Mochdre Colwyn Bay LL28 5BS

Management Committee

Tom Jones	Chairman
Bill Walker	Vice Chair
Christine Jones	Treasurer
Arthur Todd	
Pat Walker	
Anne West	Retired date 20 th July 2007
David Anderson	
Eileen Fisher	
Barbie Nirvana	

Company Secretary

Jane Priestley

Management

Jane Priestley	Manager
Hazel Weston	Office Manager

Council Representatives

Councillor Eufryn Davies
Councillor Margaret Griffiths
Councillor David Barrett

Ynys Môn County Council
Gwynedd County Council
Flintshire County Council

Bankers

National Westminster Bank, 247 High Street, Bangor, Gwynedd

Independent Examiner

Aston, Hughes & Co, Registered Auditors, Selby Towers, 29 Princes Drive, Colwyn Bay, LL29 8PE

Solicitors

Elwyn Jones & Co., 123 High Street, Bangor, Gwynedd

Structure, Governance and Management

Governing Document

The Association was incorporated on 17th August 1994 as a company limited by guarantee, with a company registration number of 2959589 and has no share capital. The liability of each member in the event of winding up is limited to £1. The Association is registered with the Charity Commission. The registered charity number is 1048017.

The governing document of the Association is the Memorandum and Articles of Association, last amended at the Annual General Meeting held on the 2nd October 1999.

Recruitment and Appointment of Management Committee

The directors of the company are also charity trustees for the purposes of charity law and under the company's Articles are known as members of the Management Committee. Under the requirements of the Memorandum and Articles of Association the members of the Management Committee are elected to serve for a period of three years after which they must be re-elected at the next Annual General Meeting.

North Wales Deaf Association represents people with varying degrees of hearing loss and seeks to ensure that the needs of all people with a hearing loss are appropriately reflected through the diversity of the trustee body. The charity has, through advertising in the newsletter, sought to identify people with a hearing loss who would be willing to become members of the management committee. The Association also recognises the importance of people with traditional business skills and individuals are approached to offer themselves for election to the Management Committee when a skills gap appears.

Trustee Induction and Training

Most trustees are already familiar with the practical work of the charity and are encouraged to take part in events that are run each year.

Additionally, new trustees without previous experience on a management committee are encouraged to attend a short training session with the Manager of the charity who covers:

- The obligations of Management Committee members
- The Memorandum and Articles of Association
- Policies and Procedures
- The business plan for the year including future plans and objectives
- The last Annual Report and Financial Statements

New committee members are also encouraged to attend training provided by one the local voluntary service councils on Roles and Responsibilities of Trustees and are handed a folder containing all of the above mentioned documents.

Risk Management

The Management Committee has conducted a review of the major risks to which the charity is exposed. The Management Committee have examined the major strategic, compliance, financial and operational risks which the charity faces and confirm that systems have been established to enable regular reports to be produced so that the necessary steps can be taken to less the risks. Procedures are in place to ensure compliance with health and safety of staff, volunteers, clients and visitors. The Association holds the Legal Service Charter Mark for quality services and has also undergone the PQASSO level one self assessment quality system.

Organisational Structure

The North Wales Deaf Association has a Management Committee of nine, who meet on a monthly basis and are responsible for the strategic direction and policy of the charity. At present the Committee has eight members from a variety of backgrounds relevant to the work of the charity. The secretary/manager also sits on the Committee but has no voting rights.

The day to day responsibility for the provision of the services rests with the Manager. The Manager is responsible for ensuring that the charity delivers the services specified to a high standard. The Manager is also responsible for the individual supervision of the staff team and also ensuring that the team continue to develop their skills and working practices in line with good practice.

Related Parties

The North Wales Deaf Association works closely with a number of National Organisations which complement the charity's objectives. The Association is a member of UK Council on Deafness, British Deaf Broadcasting Council, Association of Sign Language Interpreters, Council for the Advancement of Communication with Deaf People, and the six voluntary service councils covering the North Wales region.

Objectives and Activities

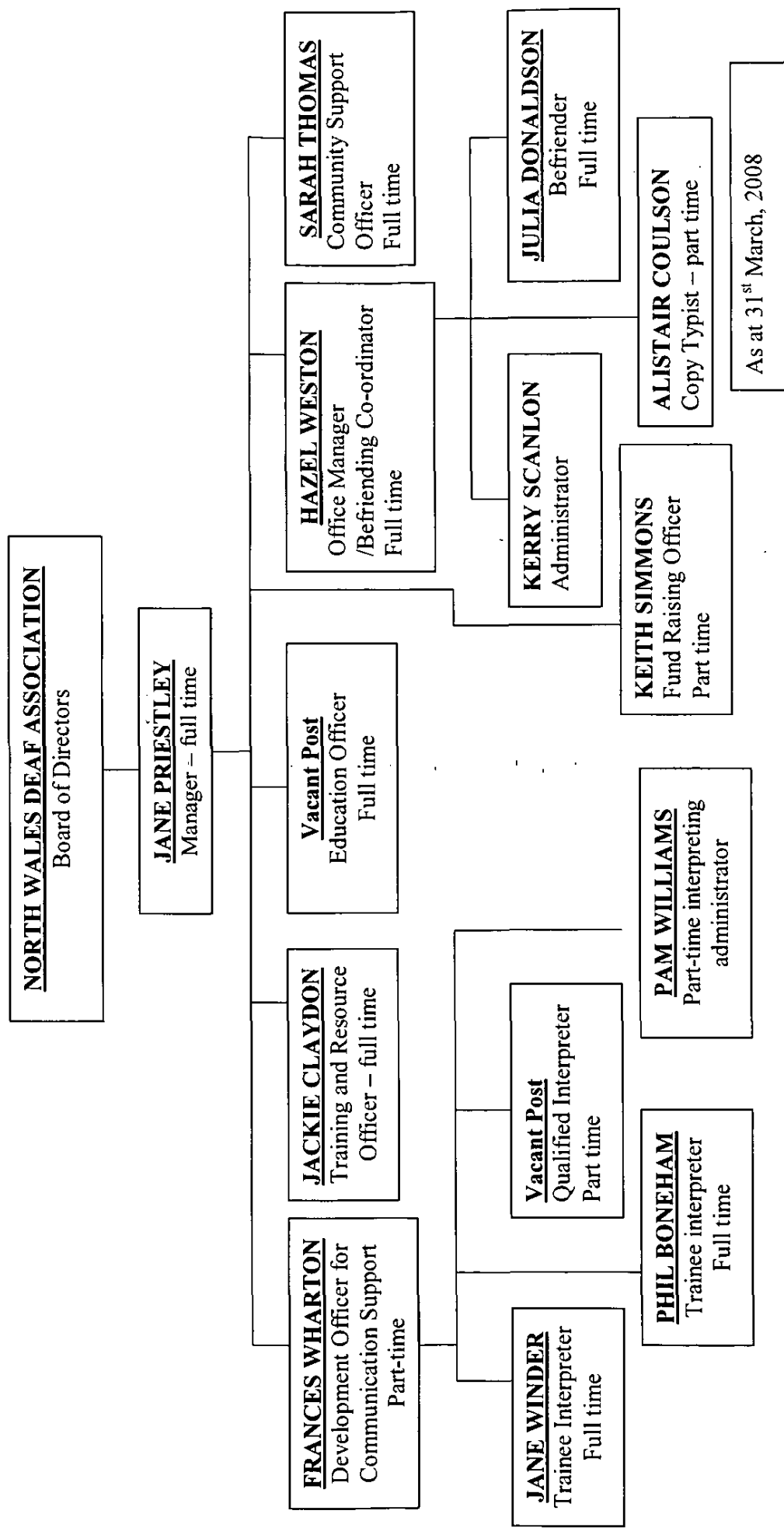
The objective and principal activity of the company is the relief of profoundly deaf, deafened, deafblind and hearing impaired people within North Wales by the promotion, development and provision of appropriate facilities, services and resources.

The Association does this by providing:

- Advice and Information
- Deaf awareness, communication training and BSL Awareness training for businesses and service providers
- Educational Services
- Equipment demonstrations and advice for deaf people
- Communication support services
- Community Advice and Support Service (previously known as Advocacy)
- Befriending services
- Lobbying for equal access to services and employment
- Promoting the Welsh deaf identity

There have been no changes in policy since the last report.

ORGANISATION CHART



As at 31st March, 2008

DIRECTOR'S REPORT

Achievements and Performance

ADVICE AND INFORMATION

North Wales Deaf Association's Advice and Information Service is available Monday to Friday from 9am to 5pm. It can be accessed by telephone, text-phone, fax, e-mail or by calling in personally at the office. Visitors to our offices are always welcome although appointments would be greatly appreciated.

We have a comprehensive library containing books and videos about deafness and sign language. We also have copies of information provided by statutory bodies in Sign Language. The library is regularly updated and books and videos can be borrowed by members for up to three weeks at a time. We have a range of periodicals, which can be read on our premises and also a wide variety of information leaflets, which can be taken away or posted out to interested people.

Every quarter a newsletter is published and some 2,500 copies are distributed across North Wales. The newsletter contains information about activities of the Association, local events and other information that may be of interest to people with a hearing loss.

Comprehensive information is now available on our website www.deafassociation.co.uk

DEAF AWARENESS TRAINING

Deaf awareness training is one of the Association's core activities. It continues to be a growth area for North Wales Deaf Association with a number of organisations and businesses using the training to ensure that they are complying with the Disability Discrimination Act.

The trainer used during this financial year was Jackie Claydon who has a Manchester Metropolitan University Teacher's Certificate in Speech Reading.

A deaf awareness course includes an introduction to deafness, basic tips for improved communication techniques, finger spelling, awareness of sign language, basic survival signs and Deaf culture.

Deaf Awareness Training Sessions 1st April 2007 to 31st March 2008

	Half day session	Full day session	Taster Sessions	TOTALS
Number of sessions	24	6	6	36
Number of staff trained	408	125	108	641

A selection of comments from evaluation forms

Excellent course, very informative and relevant to my own job. Jackie kept it interesting

Very good course. I wish I had attended it prior to working with a previous client.

Trainer is excellent and has a wicked sense of humour which is a bonus in any long training session.

Earplugs exercise was very good. I find practical exercises easier to understand

CACDP Deaf Awareness Training Courses

Due to changes in the CACDP Curriculum for the Deaf Awareness examination course, it is now no longer viable for North Wales Deaf Association to run this course and registration with CACDP has been suspended for the time being.

LIP-READING GROUPS

Lip-reading groups provide a relaxed and friendly atmosphere in which to practice to lip-read with other deaf and hard of hearing people.

Groups at Holyhead and Mochdre have continued on a monthly basis and the group at Mold meet on a weekly basis. These groups have included lip-reading practice including reminiscence, finger spelling, number work as well as advice and support. Guest speakers also attend meetings to pass on valuable information.

Venue	Number of students	Venue	Number of students
		Holyhead	12
Mochdre	8	Mold	12

EDUCATION

The Education Officer's post this year has been funded from a legacy received from Dr Evans. After School Clubs have seen a reduction in the numbers of classes being taught. Lunchtime Clubs have seen an increase as this is more convenient for the pupils and the schools.

Home visits to pre-school children are on the increase this year before the children go on to Nursery. Children have received visits from the Education Officer during school time to let them know that they are not alone and that they have a role model available to help if required.

School assemblies have been attended on a regular basis and presentations about Deaf Awareness have been given to the pupils and Teachers.

Sign Language to school classes remains an important aspect of the role of the Education Officer. This is important for all the people involved.

As before, regular contact has been maintained with the peripatetic teachers of the Deaf children in Gwynedd, Ynys Mon, Denbighshire, Wrexham, Flintshire and also with the Advisory Teacher for Sensory Impairment of Conwy.

CONWY FAMILY SUPPORT GROUP

A variety of events have been held including our annual Christmas Party. The Christmas Party was held at Venue Cymru. We had food and saw Father Christmas, and then we watched the Pantomime. This was a great event and is very popular with our families every year. We had a signed performance at the Pantomime. This was a joint event with National Deaf Children's Society, Cyswllt and RNID.

The Conwy Family Support Group have met each month and some of the events that we organised were, a Charity Walk and a visit to the Greenwood Centre, we had a great day out to Blackpool in October, we visited Glaze Away in Colwyn Bay where the children had fun painting a piece of pottery. We also went for an evening out Bowling in Llandudno where everyone had fun trying to get the highest score.

The Conwy Family Support Group has been funded by Conwy Social Services since 1st April 2002. Funding for some of these events was received from The Laura Ashley Foundation and The Archbishop of Wales Fund

EQUIPMENT DEMONSTRATIONS AND TRY BEFORE YOU BUY SCHEME

The Disability Advisors of Conwy, Gwynedd and Ynys Môn Social Services have received support and advice about special equipment on a regular basis. Equipment Demonstrations have been given to individuals both in the NWDA resource room and also in their own homes. Some clients have purchased equipment themselves and others have been referred to Social Services for equipment on long-term loan. Other demonstrations have taken place in larger groups including a number of Hard of Hearing Clubs, women's groups, Elderly People's Clubs as well as youth groups and young people's clubs.

20
91.

County	Gwynedd	Anglesey	Conwy	Denbighshire	Flintshire	Other	TOTAL
Number of Home visits	94	19	269	0	1	0	383

A try before you buy scheme has also been in operation this year and is available for people wishing to purchase their own equipment. They can try out various pieces of equipment, find out what suits them best before purchasing themselves. Short-term loan is also available for people whose equipment has been sent away for repair.

NWDA and BT's Age and Disability Team have worked closely over the last twelve months to provide an excellent service for people with a hearing loss throughout North Wales. NWDA continues to receive new phones as they are developed by BT for demonstration purposes and short-term loan. NWDA receives regular up-dates from BT and receives new equipment for demonstration purposes as soon as it is available for general distribution.

LOBBYING FOR EQUAL ACCESS

The Association has lobbied for and supported individual members of the Association with their requests for environmental equipment, rights to communication support and rights to Disability Living Allowance.

Consultation meetings have been arranged between members of the Deaf Community and Flintshire Social Services.

Lobbying on a national level has continued through UK Council on Deafness and the Deaf Broadcasting Council, both powerful umbrella groups of which NWDA is a member.

COMMUNICATION SUPPORT SERVICES

Grants are received from the Social Service Departments, and Local Health Boards of Gwynedd, Ynys Môn and Conwy, and Flintshire County Council. The Association now provides communication services to 24 deaf people in their employment, either through support from the Employment Service or their employers. Communication support has been provided for 4 students at various sites of Llandrillo College and also one student at Coleg Menai

Communication Support Services for Health Care settings From 1st April 2007 to 31st March 2008

Area	Conwy	Gwynedd	Ynys Môn
Number of Assignments	203	54	29

Total number of assignments for Health Care settings 286

Communication Support Services excluding Health Care settings From 1st April 2007 to 31st March 2008

Area	Conwy Social Services	Gwynedd Social Services	Ynys Môn Social Services	Flintshire Chief Execs. Office	NWDA	Other
Number of Assignments	74	13	4	47	24	492

Total number of interpreting Assignments carried out from 1st April 2007 to 31st March 2008 is 941

Total number of assignments using freelance interpreters during the year is 36
Number of official complaints received about the service 1

Communication Support at Colleges and further education

Establishment	Number of Courses	Number of students	Notetaker Sessions	Interpreter Sessions (3/4 hour)	CSW sessions	Total number of sessions
Llandrillo College Rhos on Sea	3	3	0	103	34	137
Llandrillo College Rhyl	1	1	0	0	32	32
Bangor University	1	1	0	101	0	101
TOTALS	5	5	0	204	66	270

During the year North Wales Deaf Association Communication Support Service provided various communication support services for 5 courses with 5 students. All together 270 sessions of 3 or 4 hours were undertaken.

COMMUNITY SUPPORT AND ADVICE SERVICE

The service previously known as the Advocacy Service covers translation of daily correspondence, assistance with replies and making telephone calls on behalf of the client, informed independent advice, assisting clients to access appropriate statutory services and provide on-going support when needed.

The need for this service has been recognised by the Social Service Departments in Flintshire, Conwy, Gwynedd and Ynys Môn. The Community Advice and Support Officer has been providing services since July 2000.

This financial year we have had some very positive successes, with people being re-housed, claiming years of back-dated benefit and following an enormous battle, reclaiming over £800 from British Gas.

Flintshire, Conwy and Gwynedd continue to flourish, customer tend to collect their letters and forms together, so that instead of making three journeys in a space of two weeks only one journey is made and the appointments are considerably longer. Ynys Môn continues to have fewer appointments, but the eight customers we see say they get a great service and will continue to use the service.

The service in Mold is delivered from our office in Ty'r Binwydden, Clayton Road, Mold. Ty'r Binwydden will be closing towards the end of 2008 and North Wales Deaf Association's Office will be moving to new premises situated in FLVC, Unit 3, Mold Business Park, Wrexham Road, Mold, Flintshire, CH7 1XP

County	Number of Clients	Phone calls	Meetings	Translation	Other work	TOTAL Appts.
Conwy	29	12	5	112	35	164
Gwynedd	18	13	7	46	61	127
Ynys Môn	8	5	3	24	8	40
Flintshire	28	64	23	212	47	346
Totals	83	94	38	394	151	677

BEFRIENDING SCHEME

The scheme was funded by the Morgan Foundation, Lloyds TSB, D'Oyly Carte Charitable Trust and Help the Aged. The scheme employed one full time befriender and one part time befriending co-ordinator.

Clients include people across the whole range of hearing loss from Hard of Hearing, Deafened, Profoundly Deaf Sign Language users, and Deafblind – anyone who is feeling isolated as a result of their hearing loss. Clients live in North Wales and can access the scheme by contacting NWDA or will be referred by Social Workers, Hearing Therapists or other professionals.

Befriending scheme 1st April, 2007 – 31st March, 2008

County	Number of Visits	Number of clients
Conwy	356	13
Denbighshire	37	3
Flintshire	53	4
Gwynedd	131	7
Wrexham	47	4
Ynys Mon	32	3
TOTALS	656	34

Clients receive either once or twice monthly visits and activities range from going out to shopping and lunch, attending local Deaf Club, support at hospital or dental appointments or just having a chat over a cup of tea. We will carry out basic tasks in the home for them like minor repairs, fire alarm testing or changing of batteries, reading and writing letters. We are able to liaise with Social Services to ensure they are receiving an adequate level of home care support and can refer clients in house for equipment assessment or community support services.

We were able to organise a number of group visits during the year including Erddig and Plas Newydd. Funding for these trips was from Awards for All Wales Fund.

Some words from the users of our service

"A marvellous time, thank you for all your hard work"

"It is such a joy to have one day a month where I can go and actually choose what I want to eat."

"The ladies who visit me help to make me feel like a normal person"

PROMOTING THE WELSH DEAF IDENTITY

The Association has had information stands at the International Women's Day in Rhyl, Health Service Promotion Event in Corwen and at some of the smaller shows in the North Wales area.

Talks have also been given by the Training and Resource Advisor and Manager to various interested parties; these included Abergele Round Table, Carers outreach, and Carers Wales.

VOLUNTEERS

The Association has enlisted the help of a number of volunteers for various tasks. These include fund raising, being directors on the board and assisting with administrative duties that the Association has undertaken during this financial year.

WORK EXPERIENCE

Every year, North Wales Deaf Association provides work experience for pupils at the local secondary schools of John Brights, Cruddyn, Aberconwy, and Eirias High School. The pupils usually have an interest in deafness and want to work in the field.

We also have a regular placement from Work Opportunities, who visits our office once per week for two hours to gain experience in working in an office environment.

DONATIONS IN KIND

Flintshire Social Services provide the Association accommodation for teaching the lip-reading class every week.

A room is loaned once per month free of charge for the lip-reading group at the Jimmy O'Toole Centre, Holyhead

FUNDRAISING ACTIVITIES

During the period 1st April 2007 to 31st March 2008 a part time Fundraising Officer was employed by North Wales Deaf Association to help generate unrestricted funds for the charity and to also help raise funds for specific projects both new and existing.

The objective of the role was to generate unrestricted funds for general use and to seek out sources of funding for several specific projects both new including Mobile Unit and Information Officer and existing including the Befriending Scheme and the Education Officer role.

Whilst no specific monetary targets were set the role has produced a significant amount of funding for the period in question. Particular successes have been in securing matched funding for the Befriending Scheme with a significant amount of unrestricted funds compared to previous years.

Whilst no monies were received in the current year an application for £246,283 to the Big Lottery "People and Places" was agreed in February for 3 year funding for a Mobile Information Unit and an Information Officer.

There is a healthy list of pending applications for funding awaiting responses and the role enables the charity to respond quickly to any opportunities that exist for funding.

REVIEW OF FINANCIAL POSITION

Funding during 2007/8 has been received from Anglesey, Conwy, Denbighshire, Flintshire and Gwynedd County Councils and Anglesey, Conwy and Gwynedd Local Health Boards for Service Level Agreements. These are signed contracts for agreed level of service for a set sum of monies.

In addition to these grants NWDA has also received grants from various trusts and foundations as follows:

The Befriending Scheme: Morgan Foundation, Lloyds TSB Foundation, Help the Aged, and D'Oyly Carte Charitable Trust.

The Education Project: Residue of estate of Dr Evans, and the Waterloo Foundation.

Sales of interpreting services and deaf awareness training continue to contribute significantly to the finances of the organisation.

Other grants have been received for specific purposes from Julian Hodge Charitable Trust, Awards for All Wales, Steel Charitable Trust, Laura Ashley Foundation and Gwendoline Margaret Davies Charity and Flintshire county Council Community Chest. A number of Town and Community Councils have also awarded grants.

The property assented to North Wales Deaf Association at 30 Lon Newydd, Llaingoch was sold in October 2007.

FUTURE OF THE ASSOCIATION

Core funding has been secured for the years 2008/9 with Anglesey, Gwynedd, Flintshire, Conwy and Denbighshire Social Services including monies to support the Community Support Service.

The interpreting service is being funded for the years 2008/2009 by Gwynedd, Ynys Môn, Conwy Social Services, Flintshire Chief Executive and Conwy, Gwynedd and Ynys Môn Local Health Boards, together with sale of service to other organisations, colleges, businesses and individuals.

A legacy has been received from the estate of Dr. Evans this is being used for education project, a grant has been received from the Waterloo Foundation and three years funding has been agreed by the Equitable Charitable Trust.

The Morgan Foundation continues to fund the befriending scheme with matched funding from Lloyds TSB and additional monies have also been received from Help the Aged to expand the service.

Funding has also been received from Wanless to provide Deaf Awareness Training to Surgery staff and Care Home Staff in Flintshire.

A grant from the Big Lottery People and Places over a three year period will be used to employ an information officer who will promote the services of the organisation. A mobile information unit will also be purchased to provide a rural outreach service for our customers.

The Association is viable and will continue to provide services as outlined on page 9.

RESERVES POLICY

The Directors have reviewed its reserves policy and the unrestricted general funds held by the charity should aim to be six months of income received. This provides sufficient funds for the charity to operate whilst waiting payment of grants and to respond to emergency applications for grants and fund raising initiatives which arise from time to time. The present level of reserves available to the charity is £125,020 this therefore falls short of this target. Although the strategy is to continue to build reserves through active fund raising efforts and sale of services, the Management Committee is aware that it will be some time before target reserves are reached.

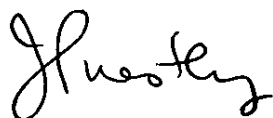
STATEMENT OF MANAGEMENT COMMITTEE RESPONSIBILITIES

Company law requires the directors to prepare financial statements for each financial year, which give a true and fair view of the state of affairs of the charitable company as at the balance sheet date and of its incoming resources and application of resources, including income and expenditure, for the financial year. In preparing those financial statements the Management Committee should follow best practice and:

- select suitable accounting policies and then apply them consistently;
- make judgements and estimates that are reasonable and prudent; and
- prepare the financial statements on a going concern basis unless it is inappropriate to assume that the company will continue in business.

The Management Committee are responsible for keeping proper accounting records which disclose with reasonable accuracy at any time the financial position of the company and to enable them to ensure that the financial statements comply with the Companies Act 1985. They are also responsible for safeguarding the assets of the company and hence for taking reasonable steps for the prevention and detection of fraud and other irregularities.

BY ORDER OF THE BOARD



Mrs J Priestley (Secretary)
Dated: 16 September 2008

Registered Office

@ Quinton Hazell
Glan y Wern Road
Mochdre
Conwy
LL28 5BS

ACCOUNTANTS' REPORT TO THE MEMBERS ON THE UNAUDITED ACCOUNTS OF NORTH WALES DEAF ASSOCIATION

We report on the accounts for the year ended 31 March 2008 set out on pages 23 to 28

Respective responsibilities of directors and reporting accountants

As described on page 22, the company's directors are responsible for the preparation of the accounts, and they consider that the company is exempt from an audit. It is our responsibility to carry out procedures designed to enable us to report our opinion.

Basis of opinion

Our work was conducted in accordance with the Statement of Standards for Reporting Accountants, and so our procedures consisted of comparing the accounts with the accounting records kept by the company, and making such limited enquiries of the officers of the company as we considered necessary for the purposes of this report. These procedures provide only the assurance expressed in our opinion.

Opinion

In our opinion:

- (a) the accounts are in agreement with the accounting records kept by the company under section 221 of the Companies Act 1985;
- (b) (i) the accounts have been drawn up in a manner consistent with the accounting requirements specified in section 249C(8) of the Act; and

(ii) the company satisfied the conditions for exemption from an audit of the accounts for the year specified in section 249A(4) of the Act as modified by section 249A(5) and did not, at any time within that year fall within any of the categories of companies not entitled to the exemption specified in section 249B(1).



Aston Hughes & Co
Selby Towers
29 Princes Drive
Colwyn Bay
LL29 8PE

Dated: 17th September, 2008

NORTH WALES DEAF ASSOCIATION
(CYMDEITHAS BYDDAR GOGLEDD CYMRU)
STATEMENT OF FINANCIAL ACTIVITIES
INCLUDING INCOME AND EXPENDITURE ACCOUNT
FOR THE YEAR ENDED 31 MARCH 2008

	<u>Note</u>	<u>Unrestricted</u> <u>Fund</u> £	<u>Restricted</u> <u>Fund</u> £	<u>Total</u> <u>2008</u> £	<u>Total</u> <u>2007</u> £
Incoming Resources					
Incoming Resources from generated funds:					
<i>Voluntary income</i>					
Donations & Grants		14502		14502	76697
<i>Activities for generating funds</i>					
Fundraising activities		11125		11125	7484
Fundraising for specific purposes			20568	20568	3100
Investment Income		3503		3503	2173
Incoming resources from charitable activities:					
Grants & contracts	2	162627	52651	215278	255356
Training & Service Provision	3	101843		101843	99935
Total Incoming resources		293600	73219	366819	444745
Resources expended					
Cost of generating funds:					
Investment property costs		1432		1432	10844
Fundraising costs		5678		5678	5662
Expenditure for specific purposes			16327	16327	1501
Charitable activities	4	257806	62583	320389	331333
Governance costs	5	5566		5566	6932
Total Resources expended		270482	78910	349392	356272
Net Income/(expenditure) for the year	6	23118	-5691	17427	88473
Transfer between Funds		635	-635	0	0
Net Movement in Funds for the Year		23753	-6326	17427	88473
Total funds brought forward		151267	48243	199510	111037
Total funds carried forward		175020	41917	216937	199510

The statement of financial activities includes all gains and losses in the year. All incoming resources and resources expended derive from continuing activities

NORTH WALES DEAF ASSOCIATION
(CYMDEITHAS BYDDAR GOGLEDD CYMRU)
BALANCE SHEET
AT 31 MARCH 2008

	<u>Note</u>	<u>2008</u>		<u>2007</u>	
		£	£	£	£
<u>FIXED ASSETS</u>					
Tangible Assets	8		18,158		17,208
<u>CURRENT ASSETS</u>					
Investment Property				75,000	
Debtors	9	22,400		25,720	
Cash at bank and in hand		<u>180,783</u>		<u>88,552</u>	
		203,183		189,272	
<u>CREDITORS</u>					
Due within one year	10	<u>-4,404</u>		<u>-6,970</u>	
<u>NET CURRENT ASSETS</u>			198,779		182,302
<u>TOTAL ASSETS LESS</u>					
<u>CURRENT LIABILITIES</u>	11		<u>216,937</u>		<u>199,510</u>
<u>CAPITAL AND RESERVES</u>					
<u>Unrestricted Funds</u>					
General fund	12		125,020		101,267
Designated Building Fund	12		50,000		50,000
Restricted Funds	12		41,917		48,243
			<u>216,937</u>		<u>199,510</u>

For the year ended 31st March 2008 the company was entitled to exemption under section 249(a) Companies Act 1985. No members have required the company to obtain an audit of its accounts for the year in questions in accordance with section 249b(2). The directors acknowledge their responsibility for: i) Ensuring the company keeps accounting records which comply with section 221; and ii) Preparing accounts which give a true and fair view of the state of affairs of the company as at the end of the financial year and of its profit and loss for the financial year in accordance with section 226, and which otherwise comply with the requirements of the Companies Act relating to accounts so far as applicable to the company.

The financial statements have been prepared in accordance with the special provisions of Part VII of the Companies Act 1985 relating to small companies and with the Financial Reporting Standard for Smaller Entities (January 2007).

Signed on behalf of the board

Director



Date:

17th September 2008

NORTH WALES DEAF ASSOCIATION
(CYMDEITHAS BYDDAR GOGLEDD CYMRU)
NOTES TO THE ACCOUNTS
FOR THE YEAR ENDED 31 MARCH 2008

1 ACCOUNTING POLICIES

a. Accounting convention

The financial statements have been prepared under the historical cost convention and in accordance with the Financial Reporting Standard for Smaller Entities (January 2007), the Companies Act 1985 and follow the recommendations in Accounting and Reporting Charities: Statement of Recommended Practice issued in June 2005.

b. Fixed Assets

All Fixed Assets apart from those purchased by specific fundraising projects are capitalised at cost.

Assets below £500 are not capitalised.

Depreciation has been calculated at a rate suitable for writing off the assets of the company over their useful lives

The rate applied has been:

Fixtures and fittings 15% reducing balance

Computer equipment 33% reducing balance

Motor vehicles 25% Straight line

c. Donations and grants

Income from donations and grants, including capital grants, is included in incoming resources when these are receivable, except as follows:

* When donors specify that donations and grants given to the charity must be used in future accounting periods, the income is deferred until those periods.

*When donors impose conditions that have to be fulfilled before the charity becomes entitled to use such income, the income is deferred and not included in incoming resources until the pre-conditions are met.

*When donors specify that donations and grants, including capital grants, are for particular restricted purposes, which do not amount to pre-conditions regarding entitlement, this is included in incoming resources of restricted funds when receivable.

d. Interest receivable

Interest is included when receivable by the charity

e. Operating leases

Operating lease rentals are charged to the Income and Expenditure account as incurred.

f. Resources expended

Resources expended are included in the Statement of Financial Activities on an accruals basis.

Certain expenditure is directly attributable to specific activities and has been included in those categories.

Where items of expenditure involved more than one cost category the basis of apportionment is as follows

	Fundraising	Direct Charitable	Governance
Salaries			
Manager		90%	10%
Fundraiser	25%	75%	

g. Pension costs

The company operates a defined contribution pension scheme. Contributions payable to this scheme are charged to the income and expenditure account in the period to which they relate.

These contributions are invested separately from the company's assets.

h. Unrestricted Funds

Unrestricted funds are donations and other incoming resources receivable or generated for the objects of the Charity without further specified purpose and are available as general funds.

i. Designated Funds.

Designated funds are unrestricted funds earmarked by the Directors for particular purposes.

j. Restricted Funds

Restricted funds are to be used for specific purposes as laid down by the donor.

2 GRANTS

	2008 £	2007 £
General Fund		
Conwy County Council	29,588	29,008
Denbighshire County Council	5,654	5,543
Flintshire County Council	26,461	25,852
Gwynedd County Council	24,619	25,020
Ynys Mon County Council	15,336	15,336
North Wales Health Authority	29,160	28,311
Conwy - Supporting People	11,496	11,271
Conwy - purchases	10,043	11,229
Conwy CFSG	7,070	0
Supported work placement	3,200	3,200
	<u>162,627</u>	<u>154,770</u>
Restricted Funds		
Education	5,510	81,756
Befriending	47,141	18,830
Total	<u>215,278</u>	<u>255,356</u>

3 INCOME FROM TRAINING AND SERVICE PROVISION

	2008 £	2007 £
Interpreting	89,714	89,835
Deaf Awareness training	9,986	7,207
Room Hire	10	0
Environmental equipment sales	1,757	2,031
Advocacy Service	0	464
Video Sales	0	150
Assessment	0	225
Sundry	161	0
Equipment Hire	215	24
Total	<u>101,843</u>	<u>99,935</u>

	Unrestricted Funds £	Restricted Funds £	Total 2008 £	Total 2007 £
4 DIRECT CHARITABLE EXPENDITURE				
Provision of services				
Salaries	207,419	47,497	254,916	256,480
Travel & Subsistence	9,863	8,478	18,341	22,441
Training & Deaf Awareness	2,185	148	2,333	1,311
Information Booklets/Library	0	0	0	64
Office expenditure	21,758	6,460	28,218	28,812
Environmental equipment	4,662	0	4,662	7,401
Freelance Interpreter costs	6,144	0	6,144	7,918
Conwy Family Support Group	59	0	59	2,059
Depreciation	5,716	0	5,716	4,847
Total	<u>257,806</u>	<u>62,583</u>	<u>320,389</u>	<u>331,333</u>

5 GOVERNANCE COSTS

Salaries	4,045	0	4,045	3,843
Premises and Office expenditure	321	0	321	989
Accountancy Fees	1,200	0	1,200	2,100
	<u>5,566</u>	<u>0</u>	<u>5,566</u>	<u>6,932</u>

6 NET INCOMING (OUTGOING) RESOURCES FOR THE YEAR

This is stated after charging:

	2008	2007
	£	£
Depreciation	5716	4847
Auditors remuneration : audit	0	2,508
Reporting Accountant	1,200	0

Travel costs amounting to £202 (2007 - £360) were reimbursed to 1 trustee (2007 - 2 trustees)

7 STAFF COSTS AND NUMBERS

Staff costs were as follows:

	2008	2007
	£	£
Salaries	218592	218695
Social Security costs	20059	20430
Pension costs	21551	22301
Miscellaneous	1117	567
	261319	261993

No employee earned £60,000 or more

The average number of employees during the year was

Direct Charitable Activities was

Management & Administration

Total

	2008	2007
	7	7
	6	6
	13	13

PENSION COSTS

Defined contribution scheme

The company operates a defined contribution pension scheme. The assets of the scheme are held separately from those of the company in an independently administered fund. The pension cost charge represents contributions payable by the company to the fund and amounted to £21551 (2007: £22301)

8 TANGIBLE FIXED ASSETS

	<u>Fixtures and Fittings and Equipment</u>	<u>Motor Vehicles</u>	<u>Total</u>
	£	£	£
<u>COST</u>			
At 1 April 2007	37,541	10845	48,386
Additions	0	6666	6,666
At 31 March 2008	37,541	17,511	55,052
<u>DEPRECIATION</u>			
At 1 April 2007	27,731	3447	31,178
Charge for the year	1,706	4010	5,716
At 31 March 2008	29,437	7,457	36,894
<u>NET BOOK VALUE</u>			
At 31 March 2007	9,810	7398	17,208
At 31 March 2008	8,104	10,054	18,158

The net book value at 31 March 2008 represents fixed assets used in the relief of profoundly deaf, deafblind and hearing impaired people within North Wales.

9 DEBTORS

	2008 £	2007 £
Trade debtors	21,258	23,827
Accrued Income	1,142	1,893
	<u>22,400</u>	<u>25,720</u>

10 CREDITORS - due within one year

	2008 £	2007 £
Trade creditors	3,204	2,910
Accruals	1,200	4,060
	<u>4,404</u>	<u>6,970</u>

11 ANALYSIS OF NET ASSETS BETWEEN FUNDS

Fund balances at 31 March 2008 are represented by:

	Total 2008 £	General Fund £	Designated Building Fund £	Restricted Funds £
Fixed assets	18,158	18,158		
Current assets	203,183	111,266	50,000	41,917
Current liabilities	-4,404	-4,404		
	<u>216,937</u>	<u>125,020</u>	<u>50,000</u>	<u>41,917</u>

The Designated Building Fund represents funds set a side by the Directors to purchase premises in the future.

12 FUNDS

The income of funds of the charity include restricted funds.

	Balance March 31 2007 £	Incoming Resources £	Movement in Funds		Balance March 31 2008 £
			Expenditure £	Transfers £	
Restricted funds					
Befriending Scheme	712	47,141	32,055		15,798
Education Officer	45,932	5,510	30,528		20,914
Other	1,599	20,568	16,327	635	5,205
	<u>48,243</u>	<u>73,219</u>	<u>78,910</u>	<u>635</u>	<u>41,917</u>
Unrestricted funds					
General reserve	101,267	293,600	270,482	-635	125,020
Designated building fund	50,000				50,000
	<u>199,510</u>	<u>366,819</u>	<u>349,392</u>	<u>0</u>	<u>216,937</u>

Purpose of restricted funds:

Befriending Scheme - The scheme is to support people in their own homes to prevent isolation. Funding this year has been received from Morgan Foundation £24,000, Lloyds TSB Foundation £10,000, Help The Aged, £8,250 and D'Oyly Carte Charitable Trust £4,876

Education Officer - The Education Officer provides support to hearing impaired children in schools. Funding this year has been received from Waterloo Foundation £5,000

Other - monies for specific purposes from various Charitable Trusts including Julian Hodge Charitable Trust, Awards for All Wales, Steel Charitable Trust, Laura Ashley Foundation and Gwendoline Margaret Davies Charity & Flintshire County Council Community Chest

This publication is available in large print
on request from the address below

NORTH WALES DEAF ASSOCIATION

@ Quinton Hazell, Glan y Wern Road, Mochdre

Tel: (01492) 542235

Minicom: (01492) 542236

Fax: (01492) 542238

Registered Charity No. 1048017

Company Limited by Guarantee no. 2959589