

**NORTH WALES DEAF ASSOCIATION
((CYMDEITHAS Y BYDDAR GOGLEDD CYMRU))**

**Annual Report and
Financial Statements**
for the year ended 31st March 2006



Company Limited by Guarantee No.2959589
Registered Charity No. 1048017

NORTH WALES DEAF ASSOCIATION

Contents

Chairman's and Manager's Introduction	3
Legal and Administrative Information	4
Organisational Chart	9
Directors' Report	10
Auditor's Report	24
Statement of Financial Activities (including Income and Expenditure Account)	26
Balance Sheet	27
Notes to the accounts	28

CHAIRMAN'S AND MANAGER'S INTRODUCTION

Welcome to our Annual Report for 2005/6. In the following pages you will read about the services that have been provided by North Wales Deaf Association during the last twelve months. This year has seen a considerable increase in our workload with many achievements. Our thanks go to our staff for their hard work and commitment, which has enabled us to deliver quality services to the people we represent. We would also like to thank our many volunteers who give their time freely to support our clients and our staff.

We are now in our 12th Year as an organisation providing services for Deaf, deafened, deafblind and hard of hearing people. In June 2004 we started our BSL Awareness Training Programme and this continued until June 2005. North Wales Deaf Association received funding from the government through a consortium bid with UK Council on Deafness to provide this training over a ten month period. Further information about this project can be found later on in the Annual Report. We also received a grant from Awards for All to develop a new website for North Wales Deaf Association, this has been live since November 2005 and you will be able to find regularly up-dated information on our new website www.deafassociation.co.uk. Look out for our newsletter, news items, job vacancies and other information about North Wales Deaf Association.

All our other projects have continued to be successful in achieving their aims and objectives.

We would like to take this opportunity to thank our members for their support and look forward to providing first class services for people with a hearing loss in the future.

Jane Priestley
Manager

Tom Jones
Chairman

NORTH WALES DEAF ASSOCIATION

NORTH WALES DEAF ASSOCIATION
CYMDEITHAS BYDDAR GOGLEDD CYMRU

Report of the Management Committee for the year ended 31 March 2006

The Management Committee presents its report and audited financial statements for the year ended 31 March, 2006.

Reference and Administrative Information

Charity Name:	North Wales Deaf Association Cymdeithas Byddar Gogledd Cymru (NWDA)
Charity Registration Number:	1048017
Company Registration Number:	2959589
Registered Office and Operational Address	@ Quinton Hazell Glan y Wern Road Mochdre Colwyn Bay LL28 5BS

Management Committee

Tom Jones	Chairman	
Bill Walker	Vice Chair	
Christine Jones	Treasurer	(appointed November, 2005)
Arthur Todd		
Pat Walker		
Anne West		(appointed November 2005)
Pat Evans		(appointed November 2005)

Company Secretary

Jane Priestley

Management

Jane Priestley	Manager
----------------	---------

Council Representatives

Councillor Eufryn Davies	Ynys Môn County Council
Councillor Margaret Griffiths	Gwynedd County Council
Councillor Lloyd Williams	Denbighshire County Council
Councillor David Barrett	Flintshire County Council

Bankers

National Westminster Bank, 247 High Street, Bangor, Gwynedd

Auditors

Aston, Hughes & Co, Registered Auditors, Selby Towers, 29 Princes Drive, Colwyn Bay, LL29 8PE

Solicitors

Elwyn Jones & Co., 123 High Street, Bangor, Gwynedd

Structure, Governance and Management

Governing Document

The Association was incorporated on 17th August 1994 as a company limited by guarantee, with a company registration number of 2959589 and has no share capital. The liability of each member in the event of winding up is limited to £1. The Association is registered with the Charity Commission. The registered charity number is 1048017.

The governing document of the Association is the Memorandum and Articles of Association, last amended at the Annual General Meeting held on the 2nd October 1999.

Recruitment and Appointment of Management Committee

The directors of the company are also charity trustees for the purposes of charity law and under the company's Articles are known as members of the Management Committee. Under the requirements of the Memorandum and Articles of Association the members of the Management Committee are elected to serve for a period of three years after which they must be re-elected at the next Annual General Meeting.

Mr W Walker and Mrs P Walker retire by rotation and, being eligible, offer themselves for re-election.

North Wales Deaf Association represents people with varying degrees of hearing loss and seeks to ensure that the needs of all people with a hearing loss are appropriately reflected through the diversity of the trustee body. The charity has, through advertising in the newsletter, sought to identify people with a hearing loss who would be willing to become members of the management committee. The Association also recognises the importance of people with traditional business skills and individuals are approached to offer themselves for election to the Management Committee when a skills gap appears.

Trustee Induction and Training

Most trustees are already familiar with the practical work of the charity and are encouraged to take part in events that are run each year.

Additionally, new trustees without previous experience on a management committee are encouraged to attend a short training session with the Manager of the charity who covers:

- The obligations of Management Committee members
- The Memorandum and Articles of Association
- Policies and Procedures
- The business plan for the year including future plans and objectives
- The last Annual Report and Financial Statements

New committee members are also encouraged to attend training provided by one the local voluntary service councils on Roles and Responsibilities of Trustees and are handed a folder containing all of the above mentioned documents.

Risk Management

The Management Committee has conducted a review of the major risks to which the charity is exposed. The Management Committee have examined the major strategic, compliance, financial and operational risks which the charity faces and confirm that systems have been established to enable regular reports to be produced so that the necessary steps can be taken to less the risks. Procedures are in place to ensure compliance with health and safety of staff, volunteers, clients and visitors. The Association hold the Legal Service Charter Mark for quality services and has also undergone the PQASSO level one self assessment quality system.

Organisational Structure

The North Wales Deaf Association has a Management Committee of nine, who meet on a monthly basis and are responsible for the strategic direction and policy of the charity. As present the Committee has seven members from a variety of backgrounds relevant to the work of the charity. The secretary/manager also sits on the Committee but has no voting rights.

The day to day responsibility for the provision of the services rests with the Manager. The Manager is responsible for ensuring that the charity delivers the services specified to a high standard. The Manager is also responsible for the individual supervision of the staff team and also ensuring that the team continue to develop their skills and working practices in line with good practice.

Related Parties

The North Wales Deaf Association works closely with a number of National Organisations which complement the charity's objectives. The Association is a member of UK Council on Deafness, British Deaf Broadcasting Council, Association of Sign Language Interpreters, Council for the Advancement of Communication with Deaf People, and the six voluntary service councils covering the North Wales region.

Objectives and Activities

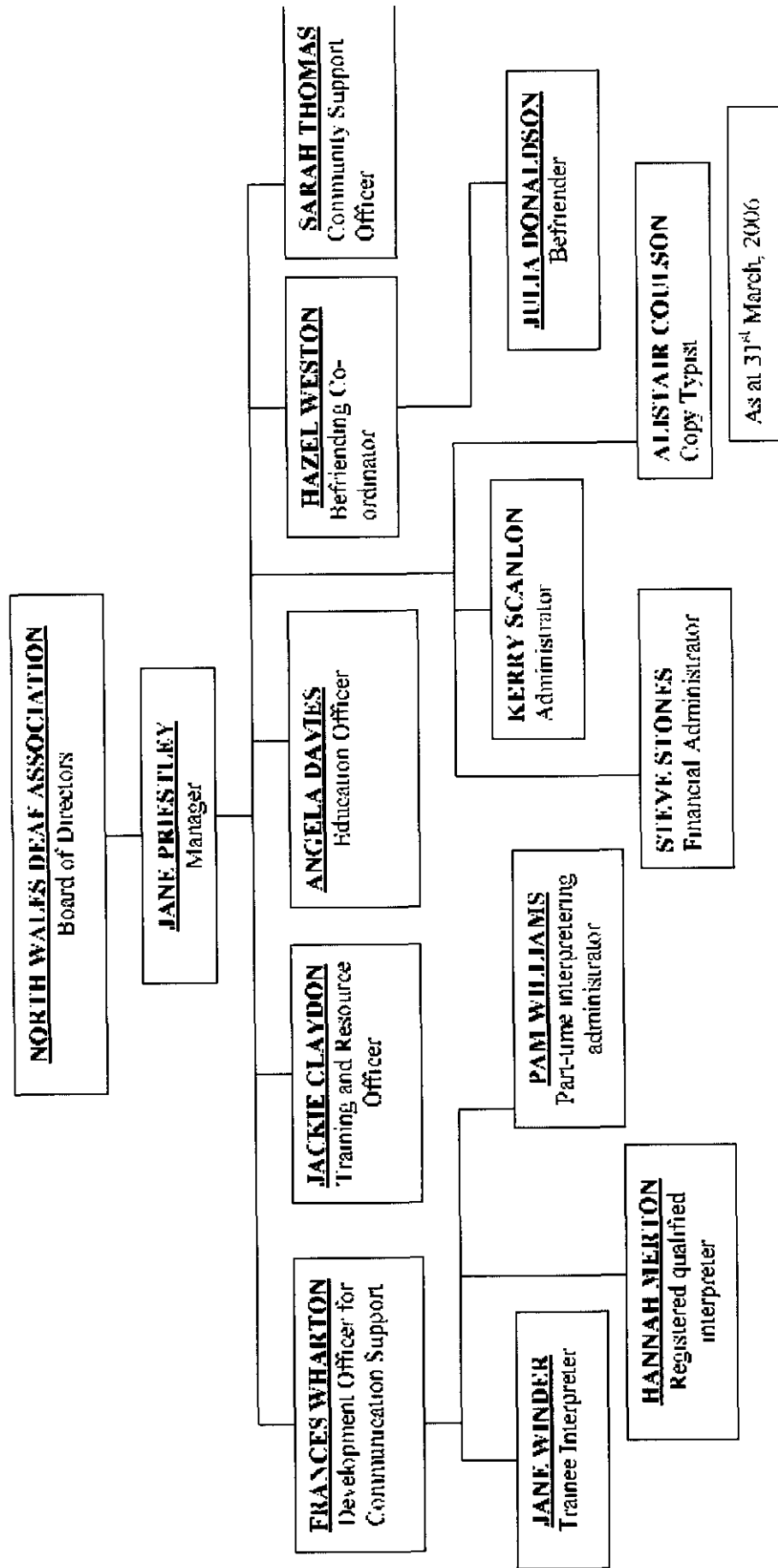
The objective and principal activity of the company is the relief of profoundly deaf, deafened, deafblind and hearing impaired people within North Wales by the promotion, development and provision of appropriate facilities, services and resources.

The Association does this by providing:

- Advice and Information
- Deaf awareness, communication training and BSL Awareness training for businesses and service providers
- Educational Services
- Equipment demonstrations and advice for deaf people
- Communication support services
- Community Advice and Support Service (previously known as Advocacy)
- Befriending services
- Lobbying for equal access to services and employment
- Promoting the Welsh deaf identity

There have been no changes in policy since the last report.

ORGANISATION CHART



As at 31st March, 2006

Achievements and Performance

ADVICE AND INFORMATION

North Wales Deaf Association's Advice and Information Service is available Monday to Friday from 9am to 5pm. It can be accessed by telephone, textphone, fax, videophone, e-mail or by calling in personally at the office. Visitors to our offices are always welcome although appointments would be greatly appreciated.

We have a comprehensive library containing books and videos about deafness and sign language. We also have copies of information provided by statutory bodies in Sign Language. The library is regularly updated and books and videos can be borrowed by members for up to three weeks at a time. We have a range of periodicals, which can be read on our premises and also a wide variety of information leaflets, which can be taken away or posted out to interested people.

Every quarter a newsletter is published and some 2,000 copies are distributed across North Wales. The newsletter contains information about activities of the Association, local events and other information that may be of interest to people with a hearing loss.

Comprehensive information is now available on our website www.deafassociation.co.uk

DEAF AWARENESS TRAINING

Deaf awareness training is one of the Association's core activities. It continues to be a growth area for North Wales Deaf Association with a number of organisations and businesses using the training to ensure that they are complying with the Disability Discrimination Act.

The trainer used during this financial year was Jackie Claydon who has a Manchester Metropolitan University Teacher's Certificate in Speech Reading.

A deaf awareness course includes an introduction to deafness, basic tips for improved communication techniques, finger spelling, awareness of sign language, basic survival signs and Deaf culture.

A new course introduced during 2003 was the CACDP Communication Tactics Certificate, this was followed by the introduction of Deaf History and Culture. During this year, NWDA has offered the two courses together with a double accreditation.

Deaf Awareness Training Sessions 1st April 2005 to 31st March 2006

	Half day session	Full day session	Makaton Training	TOTALS
Number of sessions	12	12	1	25
Number of staff trained	180	155	22	357

A selection of comments from evaluation forms

This course was put over very well. Stories told enabling you to remember things better

Very useful course. The tutor is excellent, made the topic humorous and easy to remember

Very useful, made the course very easy to understand. Tutor was very good

This is a very interesting and informative course. I enjoyed the entire course, excellent.

CACDP Deaf Awareness Training Courses

NWDA has been registered with CACDP during this financial year and has held regular CACDP deaf awareness training courses across North Wales. This is an in depth course of 10 hours plus an examination lasting 30 minutes which consists of 20 multi choice and 8 short answer questions.

The course content includes:

Defining deafness, language and culture, deaf experience and discrimination, developing communication tactics, hearing aids and cochlear implants, technical aids to communication, and human aids to communication.

In order to be successful in the Deaf Awareness exam, students need to have an understanding of all the above subjects.

CACDP Deaf Awareness Training Courses from 1st April 2005 until 31st March 2006

	Course 1	Course 2	Course 3	Course 4
No. of students enrolled	6	12	16	10
No. of students Taking exam	5	11	14	10
No. of students passing exam	5	11	13	10
No. of students Failing exam	0	0	1	0
Tutors	Jackie Claydon	Jackie Claydon	Jackie Claydon	Jackie Claydon
Venue	MOLD	NWDA	NWDA	Y FELINHELI

Selection of comments from the evaluation forms.

Very good course. A fantastic tutor who has stimulated my interest in the subject.

A very good informative course, really enjoyed it. Tutor very interesting and fantastic.

CACDP Communication Tactics and Deaf History and Culture Course from 1 April 2005 to 31st March 2006

Communication Tactics	Course 1	Course 2
No. of students enrolled	8	8
No. of students Taking exam	7	8
No. of students passing exam	7	8
No. of students Failing exam	0	0
Tutors	Jackie Claydon	Jackie Claydon
Venue	NWDA	NWDA

Deaf History and culture	Course 1	Course 2
No of students enrolled	8	7
No of students taking exam	7	7
No of students passing exam	7	7
No of students failing exam	0	0
Tutor	Jackie Claydon	Jackie Claydon
Venue	NWDA	NWDA

BRITISH SIGN LANGUAGE AWARENESS TRAINING

During 2004 North Wales Deaf Association was invited by The United Kingdom Council on Deafness to join a consortium of National and Regional Deaf Organisations as part of the Governments initiative to promote the use of BSL and encourage more people to train as BSL Interpreters.

The aim of the project was to set up a programme of Training courses running for 1 or 2 hours to enable Private Businesses, Service Providers and Voluntary Organisations access to free BSL Awareness.

Included in each session were how to approach and initiate a conversation with a deaf person, finger spelling, basic signs relevant to each customer or client group, how to use an interpreter appropriately.

By the end of each session the participants were able to communicate more confidently and efficiently with a Sign Language user and aware of how the DDA protected the rights of Deaf People.

As well as the Training Sessions, six regional Sign Fairs were held; one in each county enabling members of the public to drop in for a taster session and information gathering.

Number of Sessions	Numbers attending	Number of sign fairs	Numbers attending
24	254	3	160

LIP-READING CLASSES

Lip-reading classes provide a relaxed and friendly atmosphere in which to learn to lip-read with other deaf and hard of hearing people. Everybody learns at their own pace without pressure.

North Wales Deaf Association working in partnership with the Workers' Education Association has arranged regular 30-week courses at Mold. There is a one off registration fee of £4 each year, renewable every September. The class in Mold has been taught by Margaret Cattel.

Classes at Holyhead and Mochdre have continued on a monthly basis. These classes have included lip-reading practice including reminiscence, finger spelling, number work as well as advice and support.

Venue	Number of students	Venue	Number of students
		Holyhead	12
Mochdre	5	Mold	12

EDUCATION

The Education Officer's post is in its second year of funding from Community Fund now known as the Big Lottery. After School Clubs have seen a reduction in the numbers of classes being taught. Lunchtime Clubs have seen an increase as this is more convenient for the pupils and the schools.

Home visits to pre school children are on the increase this year before the children go on to Nursery. Children have received visits from the Education Officer during school time to let them know that they are not alone and that they have a role model available to help if required.

School assemblies have been attended on a regular basis and presentations about Deaf Awareness have been given to the pupils and Teachers.

Sign Language to school classes remains an important aspect of the role of the Education Officer. This is important for all the people involved.

For the last 3 years we have tried to get as many of the Deaf children in North Wales together for a social gathering. This year we went to Conwy and walked around the town and Harbour. 10 children came along and had a great time.

CONWY FAMILY SUPPORT GROUP

A variety of events have been held including a Christmas Party. The Christmas Party was held at Llandudno Theatre. We had food and saw Father Christmas, then we watched the Pantomime. This was a great event and many children came along. We had a signed performance at the Pantomime. This was a joint event with National Deaf Children's Society, and RNID.

The Conwy Family Support Group have met each month and some of the events that we organised were, Ogwen Valley Mountain rescue, Valentines Day, Family Fun Day, the Police visit to NWDA, Bowling, Halloween party as well as the Charity Walk and BBQ. We went to the Theatre "Venue Cymru" (North Wales Theatre) to see Jungle Book. We also went to the NDCS fun day at Deeside.

As before, regular contact has been maintained with the peripatetic teachers of the Deaf children in Gwynedd Ynys Mon, Denbighshire, Wrexham, Flintshire and also with the Advisory Teacher for Sensory Impairment of Conwy

The Conwy Family Support Group has been funded by Conwy Social Services since 1st April 2002.

EQUIPMENT DEMONSTRATIONS AND TRY BEFORE YOU BUY SCHEME

The Disability Advisors of Conwy, Gwynedd and Ynys Môn Social Services have received support and advice about special equipment on a regular basis. Equipment Demonstrations have been given to individuals both in the NWDA resource room and also in their own homes. Some clients have purchased equipment themselves and others have been referred to Social Services for equipment on long-term loan. Other demonstrations have taken place in larger groups including a number of Hard of Hearing Clubs, women's groups, Elderly People's Clubs as well as youth groups and young people's clubs.

County	Gwynedd	Anglesey	Conwy	Denbighshire	Flintshire	TOTAL
Number of Home visits	62	19	280	15	19	395

A try before you buy scheme has also been in operation this year and is available for people wishing to purchase their own equipment. They can try out various pieces of equipment, find out what suits them best before purchasing themselves. Short-term loan is also available for people whose equipment has been sent away for repair.

NWDA and BT's Age and Disability Team have worked closely over the last twelve months to provide an excellent service for people with a hearing loss throughout North Wales. NWDA continues to receive new phones as they are developed by BT for demonstration purposes and short-term loan. NWDA receives regular up-dates from BT and receives new equipment for demonstration purposes as soon as it is available for general distribution.

LOBBYING FOR EQUAL ACCESS

The Association has lobbied for and supported individual members of the Association with their requests for environmental equipment, rights to communication support and rights to Disability Living Allowance.

Consultation meetings have been arranged between members of the Deaf Community of Gwynedd, Ynys Môn, and Flintshire and service providers.

Lobbying on a national level has continued through UK Council on Deafness and the Deaf Broadcasting Council, both powerful umbrella groups of which NWDA is a member.

COMMUNICATION SUPPORT SERVICES

Grants are received from the Social Service Departments, and Local Health Boards of Gwynedd, Ynys Môn and Conwy, and Flintshire County Council. The Association now provides communication services to 29 deaf people in their employment, either through support from the Employment Service or their employers. Communication support has been provided for 13 students at various sites of Llandrillo College and also one student at Coleg Menai

Communication Support Services for Health Care settings From 1st April 2005 to 31st March 2006

Area	Conwy	Gwynedd	Ynys Môn
Number of Assignments	173	84	15

Total number of assignments for Health Care settings **272**

Communication Support Services excluding Health Care settings From 1st April 2005 to 31st March 2006

Area	Conwy Social Services	Gwynedd Social Services	Ynys Môn Social Services	Flintshire Chief Execs. Office	Other
Number of Assignments	96	11	3	46	561

Total number of interpreting Assignments carried out from 1st April 2005 to 31st March 2006 is **989**

Total number of assignments using freelance interpreters during the year is 73

Number of official complaints received about the service - none

Communication Support at Colleges and further education

Establishment	Number of Courses	Number of students	Notetaker Sessions	Interpreter Sessions (3 hour)	CSW sessions	Total number of sessions
Llandrillo College Rhos on Sea	4	3	39	59	80	178
Llandrillo College Rhyl	1	3	0	20	0	20
Open Learning Centre, Mochdre	1	6	0	0	20	20
TOTALS	6	12	39	79	100	218

During the year North Wales Deaf Association Communication Support Service provided various communication support services for 6 courses with 12 students. All together 218 sessions of 3 hours or more were undertaken.

COMMUNITY SUPPORT AND ADVICE SERVICE

The service previously known as the Advocacy Service covers translation of daily correspondence, assistance with replies and making telephone calls on behalf of the client, informed independent advice, assisting clients to access appropriate statutory services and provide on-going support when needed.

The need for this service has been recognised by the Social Service Departments in Conwy, Gwynedd and Ynys Môn. The Community Advice and Support Officer has been providing services since July 2000.

County	Number of Clients	Phone calls	Meetings	Translation	Form completion	DWP work	TOTAL Appts.
Conwy	25	10	10	99	10	51	180
Gwynedd	24	6	5	32	0	22	65
Ynys Môn	9	21	0	6	2	11	40
Other	1	1	0	3	0	0	4
TOTALS	59	38	15	140	12	82	289

BEFRIENDING SCHEME

The scheme has been funded by the Community Fund for a period of three years and commenced in May 2003.

The aim of the scheme is to alleviate isolation and loneliness amongst deaf and hard of hearing people. Initially by matching 30 volunteers with 30 people with a hearing loss. However, the project changed in the second year with the employment of a part-time professional befriender and a reduction in the number of volunteers to 5. The befriender and volunteers help to improve the confidence of people with a hearing loss, to encourage them to meet other people, join in social activities and encourage greater independence, thus improving their quality of life. They also ensure the deaf person is aware of the full range of services available to deaf hearing people in their area.

Clients include people across the whole range of hearing loss from Hard of Hearing, Deafened, Profoundly Deaf Sign Language users and Deafblind - anyone who is feeling isolated as a result of their hearing loss. Clients live in North Wales and can access the scheme by contacting NWDA or will be referred by Social Workers, Hearing Therapists or other professionals.

3rd year of scheme

Fiona Duller left scheme and Julia Donaldson was employed in September 2005 to carry out some of the visits. Over 550 visits were again made to clients and a total of 72 clients have benefited from the scheme. We were able to accompany clients to hospital, audiology, dental and optician appointments as well as visiting several clients who have had to stay in hospital. In conjunction with Gateway Gardens Trust we were able to organise trips to Portmeirion and Penrhyn Castle and to see the pantomime at Christmas. We continue to visit clients in their homes and to take them out for shopping and social activities.

Future

The funding for the scheme comes to an end in May 2006 but we have sufficient funding to continue the project whilst NWDA is looking for future funding.

North Wales Deaf Association would like to thank those volunteers who have given their time to this scheme. Their support has greatly improved the quality life of the clients they have visited over the last 3 years.

PROMOTING THE WELSH DEAF IDENTITY

The Association has had information stands at the International Women's Day in Rhyl, Health Service Promotion Event in Corwen and at some of the smaller shows in the North Wales area.

Talks have also been given by the Training and Resource Advisor and Manager to various interested parties; these included Ewloe Retirement Club, Blaenau Ffestiniog Hard of Hearing Club, Mold Lip-reading Class, Women's Institutes, Porthmadog Older People's Partnership, North Wales Society for the Blind Meet and Greet Day at the Conference Centre, Llandudno and many more.

VOLUNTEERS

The Association has enlisted the help of a number of volunteers for various tasks. These include volunteering with the befriending project, fund raising, being directors on the board and assisting with administrative duties that the Association has undertaken during this financial year.

WORK EXPERIENCE

Every year, North Wales Deaf Association provides work experience for pupils at the local secondary schools of John Brights and Eirias High School. The pupils usually have an interest in deafness and want to work in the field.

We also have a regular placement from Work Opportunities, who visits our office once per week for two hours to gain experience in working in an office environment.

DONATIONS IN KIND

Flintshire Social Services provide the Association accommodation for teaching the lip-reading class every week.

Flintshire Social Services also loan the Association a Presence Videophone.

A room is loaned once per month free of charge at the following venues for lip-reading classes:-

Jimmy O'Toole Centre, Holyhead

REVIEW OF FINANCIAL POSITION

Grants received from County Councils show an inflationary increase. In addition to these grants NWDA has also received grants from Conwy Supporting People, two grants from the Community Fund for the Befriending project and the Education project.

FUTURE OF THE ASSOCIATION

Core funding has been secured for the years 2006/7 with Gwynedd, Ynys Môn, Flintshire, Conwy and Denbighshire Social Services. The interpreting service is being funded for the years 2006/2007 by Gwynedd, Ynys Môn, Conwy Social Services, Flintshire Chief Executive and Conwy, Gwynedd and Ynys Môn Local Health Boards, together with sale of service to other organisations, businesses and individuals. A grant has been agreed for a community support service to cover the Flintshire area. A legacy is to be received from the estate of Dr. Evans during 2006/7, which is to be used for children's services and a grant has been agreed with the Morgan Foundation to re-launch the befriending scheme for a period of 12 months with possible funding for the following year providing matched funding can be found. In April 2006 North Wales Deaf Association was assented a property 30 Lon Newydd, Llaingoch. This property will shortly be put on the market and has an estimated value of £80,000.

The Association is viable and will continue to provide services as outlined on page 9.

RESERVES POLICY

The Directors have reviewed its reserves policy and the unrestricted general funds held by the charity should aim to be six months of income received. This provides sufficient funds for the charity to operate whilst waiting payment of grants and to respond to emergency applications for grants and fund raising initiatives which arise from time to time. The present level of reserves available to the charity is £68,495, this therefore falls significantly short of this target. Although the strategy is to continue to build reserves through active fund raising efforts and sale of services, the Management Committee is aware that it will be some time before target reserves are reached.

STATEMENT OF MANAGEMENT COMMITTEE RESPONSIBILITIES

Company law requires the directors to prepare financial statements for each financial year, which give a true and fair view of the state of affairs of the charitable company as at the balance sheet date and of its incoming resources and application of resources, including income and expenditure, for the financial year. In preparing those financial statements the Management Committee should follow best practice and:

- select suitable accounting policies and then apply them consistently;
- make judgements and estimates that are reasonable and prudent; and
- prepare the financial statements on a going concern basis unless it is inappropriate to assume that the company will continue in business.

The Management Committee are responsible for keeping proper accounting records which disclose with reasonable accuracy at any time the financial position of the company and to enable them to ensure that the financial statements comply with the Companies Act 1985. They are also responsible for safeguarding the assets of the company and hence for taking reasonable steps for the prevention and detection of fraud and other irregularities.

Members of the Management Committee

Members of the Management Committee, who are directors for the purpose of company law and trustees for the purpose of charity law, who served during the year and up to the date of this report are set out on page 4.

In accordance with company law, as the company's directors, we certify that:

- so far as we are aware, there is no relevant audit information of which the company's auditors are unaware; and
- as the directors of the company we have taken all steps that we ought to have taken in order to make ourselves aware of any relevant audit information and to establish that the charity's auditors are aware of that information.

AUDITORS

A resolution to reappoint Aston Hughes & Co, as auditors will be put to the members at the Annual General Meeting

The report of the directors has been prepared in accordance with the Statement of Recommended Practice; Accounting and Reporting by Charities (issued in March 2005) and in accordance with the special provisions of Part VII of the Companies Act 1985 relating to small entities

BY ORDER OF THE BOARD



Mrs J Priestley (Secretary)
Dated: 19th September 2006

Registered Office

@ Quinton Hazell
Glan y Wern Road
Mochdre
Conwy
LL28 5BS

NORTH WALES DEAF ASSOCIATION

AUDITOR'S REPORT

Independent auditor's report to the members of NORTH WALES DEAF ASSOCIATION.

We have audited the accounts of North Wales Deaf Association for the year ended 31 March 2006 on pages 26 to 31. These accounts have been prepared under the historical cost convention and the accounting policies set out on page 28.

This report is made solely to the company's members, as a body, in accordance with Section 235 of the Companies Act 1985. Our audit work has been undertaken so that we might state to the company's members those matters we are required to state to them in an auditor's report and for no other purpose. To the fullest extent permitted by law, we do not accept or assume responsibility to anyone other than the company and the company's members as a body, for our audit work, for this report, or for the opinions we have formed.

Respective responsibilities of directors and auditors

As described on page 23, the company's directors are responsible for the preparation of the accounts in accordance with applicable law and United Kingdom Accounting Standards.

Our responsibility is to audit the accounts in accordance with relevant legal and regulatory requirements and United Kingdom Accounting Standards.

We report to you our opinion as to whether the accounts give a true and fair view and are properly prepared in accordance with the Companies Act 1985. We also report to you if, in our opinion, the Directors' Report is not consistent with the accounts, if the company has not kept proper accounting records, if we have not received all the information and explanations we require for our audit or if information specified by law regarding directors' remuneration and transactions is not disclosed.

We read the Directors' Report and consider the implications for our report if we become aware of any apparent misstatements within it.

Basis of audit opinion

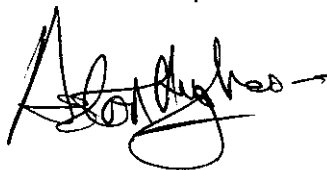
We conducted our audit in accordance with United Kingdom Auditing Standards issued by the Auditing Practices Board. An audit includes examination, on a test basis of evidence relevant to the amounts and disclosures in the accounts. It also includes an assessment of the significant estimates and judgements made by the directors in the preparation of the accounts and of whether the accounting policies are appropriate to the company's circumstances, consistently applied and adequately disclosed.

We planned and performed our audit so as to obtain all the information and explanations which we considered necessary in order to provide us with sufficient evidence to give reasonable assurance that the accounts are free from material misstatement, whether caused by fraud or other irregularity or error. In forming our opinion we also evaluated the overall adequacy of the presentation of information in the accounts.

Opinion

In our opinion the accounts give a true and fair view of the state of the company's affairs as at 31 March 2006 and of the incoming resources and application of resources, including its income and expenditure, for the year then ended and have been properly prepared in accordance with the Companies Act 1985.

Aston Hughes & Co
Registered Auditors
Colwyn Bay

A handwritten signature in black ink, appearing to read 'Aston Hughes', with a horizontal line extending to the right.

20 September 2006

NORTH WALES DEAF ASSOCIATION
(CYMDEITHAS BYDDAR GOGLEDD CYMRU)
STATEMENT OF FINANCIAL ACTIVITIES
INCLUDING THE INCOME AND EXPENDITURE ACCOUNT
FOR THE YEAR ENDED 31 MARCH 2006

	<u>Note</u>	<u>Unrestricted funds</u> £	<u>Restricted funds</u> £	<u>Total 2006</u> £	<u>Total 2005</u> £
Incoming resources					
Incoming resources from generated funds:					
<i>Voluntary income</i>					
Donations and grants		4,859	0	4,859	27,590
<i>Activities for generating funds</i>					
Fundraising activities		7,951	0	7,951	6,126
Investment income		1,961	0	1,961	1,677
Incoming resources from charitable activities:					
Grants and contracts	2	133,853	90,412	224,265	223,988
Training and service provision	3	81,830	0	81,830	75,106
Total incoming resources		230,454	90,412	320,866	334,487
Resources expended					
Cost of generating funds:					
Fundraising costs		1,243	0	1,243	799
Charitable activities	4	189,568	92,207	281,775	263,574
Governance costs	5	42,884	0	42,884	40,903
Total resources expended		233,695	92,207	325,902	305,276
Net income/(expenditure) for the year	6	-3,241	-1,795	-5,036	29,211
Transfer between funds		0	0	0	0
Net movement in funds for the year		-3,241	-1,795	-5,036	29,211
Total funds brought forward		96,736	19,337	116,073	86,862
Total funds carried forward		93,495	17,542	111,037	116,073

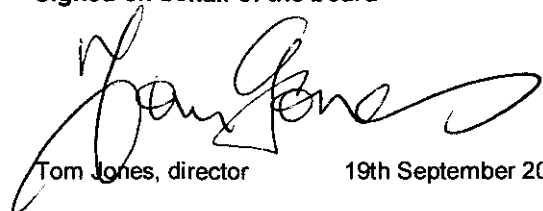
The statement of financial activities includes all gains and losses in the year. All incoming resources and resources expended derive from continuing activities

NORTH WALES DEAF ASSOCIATION
(CYMDEITHAS BYDDAR GOGLEDD CYMRU)
BALANCE SHEET
AT 31 MARCH 2006

	<u>Note</u>	<u>2006</u>		<u>2005</u>	
		£	£	£	£
<u>FIXED ASSETS</u>					
Tangible assets	8		14,155		17,350
<u>CURRENT ASSETS</u>					
Debtors	9	44,959		31,229	
Cash at bank and in hand		<u>57,574</u>		<u>76,509</u>	
		102,533		107,738	
<u>CREDITORS</u>					
Due within one year	10	<u>-5,651</u>		<u>-9,015</u>	
<u>NET CURRENT ASSETS</u>			96,882		98,723
<u>TOTAL ASSETS LESS</u>					
<u>CURRENT LIABILITIES</u>	11		<u><u>111,037</u></u>		<u><u>116,073</u></u>
<u>CAPITAL AND RESERVES</u>					
<u>Unrestricted funds</u>					
General fund			68,495		71,736
Designated building fund			<u>25,000</u>		<u>25,000</u>
			93,495		96,736
<u>Restricted funds</u>	12		17,542		19,337
			<u><u>111,037</u></u>		<u><u>116,073</u></u>

The financial statements have been prepared in accordance with the special provisions of Part VII of the Companies Act 1985 relating to small companies and with the Financial Reporting Standard for Smaller Entities (January 2005).

Signed on behalf of the board



Tom Jones, director

19th September 2006

NORTH WALES DEAF ASSOCIATION
(CYMDEITHAS BYDDAR GOGLEDD CYMRU)
NOTES TO THE ACCOUNTS
FOR THE YEAR ENDED 31 MARCH 2006

1 ACCOUNTING POLICIES

a. Accounting convention

The financial statements have been prepared under the historical cost convention and in accordance with the Financial Reporting Standard for Smaller Entities (January 2005), the Companies Act 1985 and follow the recommendations in Accounting and Reporting by Charities: Statement of Recommended Practice issued in March 2005.

b. Depreciation

Depreciation has been calculated at rates suitable for writing off the assets of the company over their useful lives

The rates applied have been:

Fixtures and fittings	15% reducing balance
Computer equipment	33% reducing balance
Motor vehicles	25% straight line

c. Donations and grants

Income from donations and grants, including capital grants, is included in incoming resources when these are receivable, except as follows:

* When donors specify that donations and grants given to the charity must be used in future accounting periods, the income is deferred until those periods.

*When donors impose conditions that have to be fulfilled before the charity becomes entitled to use such income, the income is deferred and not included in incoming resources until the pre-conditions are met.

*When donors specify that donations and grants, including capital grants, are for particular restricted purposes, which do not amount to pre-conditions regarding entitlement, this is included in incoming resources of restricted funds when receivable.

d. Interest receivable

Interest is included when receivable by the charity

e. Operating leases

Operating lease rentals are charged to the income and expenditure account as incurred.

f. Resources expended

Resources expended are included in the income and expenditure account on an accruals basis.

Certain expenditure is directly attributable to specific activities and has been included in those categories.

Where items of expenditure involved more than one cost category the basis of apportionment is as follows:

	Direct charitable	Management and administration
Management salaries	50%	50%
Administrator salaries	50%	50%
Premises and office costs	70%	30%
Other costs	Direct	Direct

g. Pension costs

The company operates a defined contribution pension scheme. Contributions payable to this scheme are charged to the income and expenditure account in the period to which they relate. These contributions are invested separately from the company's assets.

h. Unrestricted Funds

Unrestricted funds are donations and other incoming resources receivable or generated for the objects of the charity without further specified purpose and are available as general funds.

i. Designated Funds.

Designated funds are unrestricted funds earmarked by the directors for particular purposes.

j. Restricted Funds

Restricted funds are to be used for specific purposes as laid down by the donor.

2 GRANTS AND CONTRACTS

	2006 £	2005 £
Unrestricted funds		
Conwy County Council	29,008	33,839
Denbighshire County Council	5,491	5,384
Flintshire County Council	8,932	8,625
Gwynedd County Council	24,530	24,040
Ynys Mon County Council	14,896	14,896
North Wales Health Authority	27,452	26,782
Conwy - Supporting People	10,782	8,160
Conwy - purchases	9,562	2,387
Supported work placement	3,200	3,200
	<u>133,853</u>	<u>127,313</u>
Restricted funds		
Lottery - Community Fund Education	37,269	36,184
Lottery - Community Fund Befriending	45,131	43,816
Awards for All Wales	2,402	0
UKCod BSL Awareness	5,610	15,675
CVSC	0	1,000
Total	<u>224,265</u>	<u>223,988</u>

3 TRAINING AND SERVICE PROVISION

	2006 £	2005 £
Interpreting	71,638	59,586
Deaf awareness training	6,909	11,136
Training	424	0
Environmental equipment sales	2,829	3,237
Advocacy service	0	244
Video sales	30	457
Assessment	0	446
Total	<u>81,830</u>	<u>75,106</u>

4 CHARITABLE ACTIVITIES

	Unrestricted Funds £	Restricted Funds £	Total 2006 £	Total 2005 £
Provision of services				
Salaries	138,382	70,019	208,401	190,691
Travel and subsistence	9,295	12,620	21,915	16,835
Training and deaf awareness	3,030	813	3,843	6,587
Information booklets/library	119	0	119	124
Office expenditure	16,936	6,133	23,069	21,219
Equipment	0	2,622	2,622	2,567
Environmental equipment	9,214	0	9,214	6,596
Freelance interpreter costs	8,172	0	8,172	15,300
Conwy Family Support Group	1,775	0	1,775	1,226
Depreciation	2,645	0	2,645	2,429
Total	<u>189,568</u>	<u>92,207</u>	<u>281,775</u>	<u>263,574</u>

5 GOVERNANCE COSTS

Salaries	30,977	0	30,977	29,418
Travel and subsistence	579	0	579	0
Training and deaf awareness	137	0	137	0
Information booklets/library	225	0	225	0
Premises and office expenditure	7,471	0	7,471	8,409
Legal and professional fees	2,091	0	2,091	2,034
Bad debts write off	586	0	586	0
Depreciation	818	0	818	1,042
Total	<u>42,884</u>	<u>0</u>	<u>42,884</u>	<u>40,903</u>

6 NET INCOME/(EXPENDITURE) FOR THE YEAR

This is stated after charging:

	2006 £	2005 £
Depreciation	3,463	3,471
Auditors remuneration : audit	2,027	1,915

Travel costs amounting to £68 (2005 - £83) were reimbursed to 2 (2005 - 1) trustees.

7 STAFF COSTS AND NUMBERS

Staff costs were as follows:

	2006 £	2005 £
Salaries	161,064	147,899
Social Security costs	57,516	55,259
Pension costs	20,200	16,418
Miscellaneous	598	533
	239,378	220,109

No employee earned £60,000 or more

The average number of employees during the year was 13 (2005 -13)

PENSION COSTS

Defined contribution scheme

The company operates a defined contribution pension scheme. The assets of the scheme are held separately from those of the company in an independently administered fund. The pension cost charge represents contributions payable by the company to the fund and amounted to £20,200 (2005: £16,418)

8 TANGIBLE FIXED ASSETS

	<u>Fixtures, fittings and equipment</u> £	<u>Motor vehicles</u> £	<u>Total</u> £
<u>COST</u>			
At 1 April 2005	37,273	2,945	40,218
Additions	268	0	268
At 31 March 2006	37,541	2,945	40,486
<u>DEPRECIATION</u>			
At 1 April 2005	22,868	0	22,868
Charge for the year	2,727	736	3,463
At 31 March 2006	25,595	736	26,331
<u>NET BOOK VALUE</u>			
At 31 March 2005	14,405	2,945	17,350
At 31 March 2006	11,946	2,209	14,155

All assets held by the charity are recorded in the financial statements at cost less accumulated depreciation. Items of a capital nature which cost in excess of £100 are treated as fixed asset additions.

9 DEBTORS

	2006	2005
	£	£
Trade debtors	35,383	25,849
Accrued Income	9,576	5,380
	44,959	31,229

10 CREDITORS - due within one year

	2006	2005
	£	£
Trade creditors	2,910	2,910
Accruals	2,741	6,105
	5,651	9,015

11 ANALYSIS OF NET ASSETS BETWEEN FUNDS

Fund balances at 31 March 2006 are represented by:

	Total 2006	General fund	Designated building fund	Restricted funds
	£	£	£	£
Fixed assets	14,155	14,155	0	0
Current assets	102,533	59,991	25,000	17,542
Current liabilities	-5,651	-5,651	0	0
	111,037	68,495	25,000	17,542

The designated building fund represents funds set a side by the directors to purchase premises in the future.

12 RESTRICTED FUNDS

	Balance March 31 2005	Movement in funds		Balance March 31 2006
	£	Incoming resources	Resources expended	£
		£	£	
Lottery - Community Fund Education	591	37,269	36,397	1,463
Lottery - Community Fund Befriending	17,961	45,131	47,013	16,079
Awards for All Wales	0	2,402	2,402	0
UKCod BSL Awareness	785	5,610	6,395	0
	19,337	90,412	92,207	17,542

Purpose of restricted funds: Community Fund Education is to provide the service of an education officer; Community Fund Befriending is to operate a befriending scheme for people with hearing loss. Awards for All Wales to cover communication support and printing costs for two open days. UKCod BSL Awareness is for BSL Awareness training and sign fairs.

13 LEGACIES RECEIVABLE

The North Wales Deaf Association has been bequeathed a property known as 30 Lon Newydd, Llaingoch, Holyhead, Anglesey. This property is due to be sold within one year for an expected value of £ 80,000. This item has not been included in the financial statements.

This publication is available in large print
on request from the address below

NORTH WALES DEAF ASSOCIATION

@ Quinton Hazell, Glan y Wern Road, Mochdre

Tel: (01492) 542235

Minicom: (01492) 542236

Fax: (01492) 542238

Registered Charity No. 1048017

Company Limited by Guarantee no. 2959589