



CHFP010

Please complete legibly in black type, or bold block lettering

Company Name in full

Return by a public company purchasing its own shares for holding in treasury

Pursuant to section 169(1B) of the Companies Act 1985

2714781

CLS HOLDINGS PLC

PART A: PURCHASE BY COMPANY OF ITS OWN SHARES FOR HOLDING IN TREASURY

Class of shares
(ordinary or preference etc)

ORDINARY

Number of shares

10,228

Date(s) shares delivered to the company

24/10/2006

For each share:

Nominal value

25 pence

Maximum price paid

£5.30

Minimum price paid

£5.30

The aggregate amount paid by the company for the shares to which this return relates was:

£

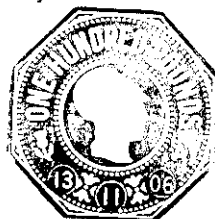
54,208.40

Stamp Duty is payable on the aggregate amount at the rate of 0.5 % rounded up to the nearest multiple of £5

£

275.00

Please use in the For Initial use only.



NOTE

This return must be delivered to the Registrar within a period of 28 days beginning with the first date on which shares to which it relates were delivered to the company. Shares placed in treasury must be "qualifying shares" as defined by section 162(4) of the Companies Act 1985

PART B: FULLY PAID BONUS SHARES PLACED IN TREASURY PURSUANT TO SECTION 162C(6) OF THE COMPANIES ACT 1985

Class of shares
(ordinary or preference etc)

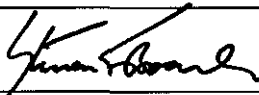
Number of shares

Nominal value of each share

Date(s) shares delivered to the company

** Delete as appropriate

Signed



Date

30.10.2006

(**a director / secretary / administrator / administrative receiver / receiver manager / receiver)

You do not have to give any contact information in the box opposite, but if you do, it will help Companies House to contact you if there is a query on the form. The contact information that you give will be visible to searchers of the public record.

Sarah Ghinn, Deputy Company Secretary, CLS Holdings plc

26th Floor, Portland House, Bressenden Place, London

SW1E 5BG

Tel 020 7840 7772

DX number

DX exchange



A42
COMPANIES HOUSE

15
16/11/2006

When you have completed and signed the form and it has been stamped by the Inland Revenue please send it to the Registrar of Companies at:
Companies House, Crown Way, Cardiff, CF14 3UZ DX 33050 Cardiff
for companies registered in England and Wales or
Companies House, 37 Castle Terrace, Edinburgh, EH1 2EB
DX 235 Edinburgh or LP - 4 Edinburgh 2
for companies registered in Scotland