

1050006

CAMBRIDGE HOUSE AND TALBOT

ACCOUNTS FOR THE YEAR ENDED 31st MARCH 1996

RESPONSIBILITIES OF THE MEMBERS OF COUNCIL

Company law requires the Council to prepare accounts for each financial year which give a true and fair view of the state of affairs of the company and of the financial activities of the company for that year. In preparing these accounts, the Council are required to:

- select suitable accounting policies then apply them consistently;
- make judgements and estimates that are reasonable and prudent;
- prepare the financial statements on the going concern basis unless it is inappropriate to presume that the company will continue in operation.

The Council are responsible for keeping proper accounting records which disclose with reasonable accuracy at any time the financial position of the company and to enable them to ensure that the financial statements comply with the Companies Act 1985. They are also responsible for safeguarding the assets of the company and hence for taking reasonable steps for the prevention and detection of fraud and other irregularities.

REPORT OF THE AUDITORS

to the members of

CAMBRIDGE HOUSE AND TALBOT

We have audited the accounts on pages 2 and 3 and 'Notes to the Accounts' on pages 9 to 12 which have been prepared under the historical cost convention as modified by the revaluation of investments.

RESPECTIVE RESPONSIBILITIES OF THE MEMBERS OF COUNCIL AND THE AUDITORS

As described above the members of council are responsible for the preparation of the accounts. It is our responsibility to form an independent opinion, based on our audit, on those accounts and to report our opinion to you.

BASIS OF OPINION

We conducted our audit in accordance with Auditing Standards issued by the Auditing Practices Board. An audit includes examination, on a test basis, of evidence relevant to the amounts and disclosures in the accounts. It also includes an assessment of the significant estimates and judgements made by the members of council in the preparation of the accounts, and of whether the accounting policies are appropriate to the company's circumstances, consistently applied and adequately disclosed.

We planned and performed our audit so as to obtain all the information and explanations which we considered necessary in order to provide us with sufficient evidence to give reasonable assurance that the accounts are free from material misstatement, whether caused by fraud or other irregularity or error. In forming our opinion we also evaluated the overall adequacy of the presentation of the information in the accounts.

OPINION

In our opinion the accounts give a true and fair view of the state of affairs of Cambridge House and Talbot at 31st March 1996 and of its financial activities for the year ended on that date and have been properly prepared in accordance with the Companies Act 1985.

Chantrey Vellacott
CHANTREY VELLACOTT

Chartered Accountants
Registered Auditor
15th July 1996

Russell Square House
10-12 Russell Square
London WC1B 5LF



COMPANIES HOUSE 06/12/96

TREASURER'S REPORT

The statement of financial activities shows that resources of £980,473 were used in the year. In spite of a reduction from £188,365 to £147,526 in our voluntary fundraising the resources used were all met from resources arising in the year. The General Fund balance increased by £10,036 after making a further provision of £5,524 in support of the Legal Centre.

During the year it was decided to close down the Community Club and its accumulated deficit of £5,306 has been fully provided for by the General Fund.

You will recall that last year the format of the accounts was changed in line with current best practice. A further change has been made this year so that our investments in unit trusts are now stated at market value with a separate reserve for unrealised investment gains. The effect of this change in accounting treatment has been to increase our stated reserves by £22,672 of which £10,222 arose during the year and £11,450 relates to prior years.

It is significant that our grant income, including income under service agreements, has increased from £643,408 in the year ended 31 March 1994 to £829,117 last year, or 80 per cent of our total income. We acknowledge that this represents an important measure of the confidence of Southwark Council and other funding bodies in the ability of Cambridge House and Talbot and our projects to deliver appropriate cost effective services.

Bill Higgs retired during the year and our accounts office is now managed by Pauline Morrison, our finance officer, assisted by Abraham Teclé. I would like to thank each of them for their dedicated support during this year and especially to Bill for all his wise counsel and support over the last seven years.

Angus Gilroy
Hon. Treasurer.

**The Council Members for the
year ended 31st March 1996 were:**

Ann Bernadt	Robert Park
Angus Gilroy	Edward Roskill
Claire Miller	Tim Ward
Richard Griffiths (from May 95)	

BALANCE SHEET at 31st MARCH 1996

1995		1996
£		£
	FIXED ASSETS	
376518	Tangible Assets (note 5)	355470
89396	Investments (note 6)	100110
<u>465914</u>		<u>455580</u>
	CURRENT ASSETS	
913	Stocks	-
27356	Debtors	57853
9998	Prepayments	1034
253909	Cash	295834
<u>292176</u>		<u>354721</u>
	LESS: CREDITORS Falling due within one year	
25966	Taxes and social security costs	26535
356	Other Creditors	313
32157	Accruals and deferred income	20343
35280	Provision for future maintenance	31441
<u>93759</u>		<u>78632</u>
<u>198417</u>	NET CURRENT ASSETS	<u>276089</u>
<u>664331</u>		<u>731669</u>
	RESERVES	
	UNRESTRICTED FUNDS	
86520	General Fund	96556
11450	Unrealised Investment Surplus	21672
598	Holte Legacy	598
<u>98568</u>		<u>118826</u>
	RESTRICTED CAPITAL FUNDS	
332212	Premises Fund	323964
44306	Equipment Fund	31506
<u>376518</u>		<u>355470</u>
	RESTRICTED REVENUE FUNDS	
161771	Project Funds	229407
27474	Centenary Appeal	27966
189245		<u>257373</u>
<u>664331</u>		<u>731669</u>



Approved by the Council on 15th July 1996 and signed on its behalf by Richard Griffiths - Chair

STATEMENT OF FINANCIAL ACTIVITIES
for the Year Ended 31st March 1996

	Unrestricted Funds	Restricted Capital Funds	Restricted Revenue Funds	Totals 1996	Totals 1995
	£	£	£	£	£
RESOURCES ARISING					
Voluntary Fundraising	32871	—	114655	147526	188365
Grants receivable	19103	—	810014	829117	751747
Investment income (note 6)	59703	—	1243	60946	62418
GROSS RESOURCES ARISING IN THE YEAR	111677	—	925912	1037589	1002530
RESOURCES USED					
Direct charitable expenditure	—	—	(738344)	(738344)	(728135)
Support costs charged to projects	—	—	(107810)	(107810)	(95142)
Fundraising and publicity	(10305)	—	(17086)	(27391)	(27036)
Administration	(85880)	—	—	(85880)	(85652)
Expenditure capitalised	—	8731	—	8731	31465
Depreciation	—	(29779)	—	(29779)	(27595)
Provisions	(5456)	—	5456	—	—
RESOURCES USED IN THE YEAR	(101641)	(21048)	(857784)	(980473)	(932095)
CHANGES IN RESOURCES BEFORE INVESTMENT GAINS AND LOSSES	10036	(21048)	68128	57116	70435
Gains/(Losses) on investments					
realised	—	—	—	—	(1635)
unrealised	10222	—	—	10222	(1876)
CHANGES IN RESOURCES AFTER INVESTMENT GAINS AND LOSSES	20258	(21048)	68128	67338	66924
Balance at 1st April 1995	87118	376518	189245	652881	585082
Prior year adjustments:					
Investments (note 1)	11450	—	—	11450	12325
Balance at 1st April 1995 restated	98568	376518	189245	664331	597407
BALANCE AT 31st MARCH 1996	118826	355470	257373	731669	664331

ADULT EDUCATION

1995		1996	
£		£	£
INCOME			
6500	L.B. Southwark – Education	–	
450	L.B. Southwark – Women's Unit	–	
101910	The Funding Council	103001	
5702	Donations and Other Income	1608	
<u>114562</u>			104609
EXPENDITURE			
37427	Salaries & NI	44659	
199	Staff Training	2135	
5204	Office Resources	4220	
554	Teaching Resources	1318	
2588	Printing & Publicity	422	
1679	General Expenses	1580	
53	Travel Expenses	133	
22624	Tutor Hours	26847	
4933	Creche Expenses	4509	
751	Insurance	1086	
2178	Staff Recruitment	–	
9300	Support Costs	9579	
10490	Rent – inc. services	10800	
<u>97980</u>			107288
16582	Excess of (Expenditure)/Income		(2679)
3354	Balance brought forward		19936
<u>19936</u>	Balance carried to Balance Sheet		17257

ARTIST IN COMMUNITY

1995		1996	
£		£	£
INCOME			
1393	Other donations	–	
1100	Capital Radio H.A.L.C.	1661	
–	Fees	141	
<u>2493</u>			1802
EXPENDITURE			
218	Tutor Fees	3533	
–	Materials	108	
112	Office Resources	37	
–	General Expenses	72	
–	Meeting Rooms	408	
330	Support Costs	370	
<u>660</u>			4528
1833	Excess of (Expenditure)/Income		(2726)
3372	Balance brought forward		5205
<u>5205</u>	Balance carried to Balance Sheet		2479

CAMBERWELL ADVOCACY OFFICE

1995		1996	
£		£	£
INCOME			
89900	L.B. Southwark	112592	
568	Donations	–	
15269	Joint Finance	7419	
9000	L.S.L.H.C.	–	
–	L.S.L.H.A./Health Authority	14000	
–	Other Income	612	
<u>114737</u>			134623
EXPENDITURE			
81235	Salaries & NI	85352	
6484	Office Resources & Equipment	6805	
1088	Publicity & Training	3720	
641	Travel Expenses	123	
857	General Expenses	983	
–	Computer Equipment	1973	
38	Staff Recruitment	2057	
9920	Support Costs	10212	
4970	Rent – inc. services	6195	
<u>105233</u>			117420
9504	Excess of Income		17203
11015	Balance brought forward		20519
<u>20519</u>	Balance carried to Balance Sheet		37722

COMMUNITY CLUB

1995		1996	
£		£	£
INCOME			
5022	Bar Income	1889	
41	Members' Subscriptions	–	
22	Guest Fees	–	
490	Activities	–	
<u>5575</u>			1889
EXPENDITURE			
3800	Bar Expenditure	1573	
38	Entertainments	–	
275	General Expenses	–	
193	Licences	196	
236	Caretaking & Cleaning	2	
1330	Support Costs	–	
2113	Rent – inc. services	50	
<u>7985</u>			1821
(2410)	Excess of Income/(Expenditure)		68
(2964)	Deficit balance brought forward		(5374)
<u>(5374)</u>	Deficit carried to Balance Sheet		(5306)

LEGAL CENTRE

1995		1996	
£		£	£
INCOME			
16988	Donations	14094	
73401	L.B. Southwark	75616	
20104	Law Society Fees and Costs	12296	
49814	Legal Aid Society	51343	
<u>160307</u>			153349
EXPENDITURE			
126013	Salaries & NI	123631	
3865	Office Resources	4155	
2713	Books & Subscriptions	2392	
1055	General Expenses	1842	
1456	Disbursements	1633	
1219	Practising Certificates	780	
1355	Insurance	1455	
1280	Staff Recruitment & Training	—	
—	Computer & Office Equipment	759	
12620	Support costs	12483	
9460	Rent – inc. services	9743	
<u>161036</u>			<u>158873</u>
(729)	Excess Expenditure		(5524)
(12479)	Deficit balance brought forward		(13208)
(13208)	Deficit carried forward		<u>(18732)</u>

PEOPLE-TO-PEOPLE

1995		1996	
£		£	£
INCOME			
12250	City Parochial Foundation	9750	
510	Donations	8158	
—	L.B. Southwark – Womens Unit	950	
30000	L.B. Southwark – Community Ed.	10000	
—	L.B. Southwark – Social Services	12000	
52434	Joint Finance	41463	
1868	Training Income	—	
<u>97062</u>			82321
EXPENDITURE			
51845	Salaries & NI	59671	
1688	General Expenses	1804	
127	Volunteer Expenses	170	
5463	Office Resources	2562	
3046	Training	1785	
599	Travel Expenses	256	
3313	Office Equipment	180	
949	Development/Consultancy	—	
8300	Support Costs	8554	
4270	Rent – inc. services	5404	
3345	Printing & Publicity	1284	
432	Umbrella Evening Costs	687	
360	Insurance	103	
3946	Curriculum Materials	177	
—	Service Premises	660	
<u>87683</u>			<u>83297</u>
9379	Excess of (Expenditure)/Income		(976)
7712	Balance brought forward		17091
<u>17091</u>	Balance carried to Balance Sheet		<u>16115</u>

ONLY CONNECT

1995		1996	
£		£	£
INCOME			
145304	L.B. Southwark	157269	
12924	Donations & Other Income	13436	
3435	BBC Children in Need	24843	
2400	Capital Radio H.A.L.C.	5950	
6244	Fees	10205	
9850	Joint Finance	20650	
1270	Lottery Income	976	
<u>181427</u>			233329
EXPENDITURE			
119787	Salaries & NI	123237	
2555	Office Resources	3609	
134	Printing & Publicity	975	
2042	Volunteers' Expenses	2560	
115	Travel Expenses	96	
114	Minibus Expenses	-	
961	General Expenses	1159	
2061	Staff Training	262	
36213	Activity Costs	44746	
555	Lottery Prizes	667	
4716	Arts Project	-	
1269	Computer & Office Equipment	510	
19960	Support Costs	20558	
6390	Rent - inc. services	6582	
<u>196872</u>			<u>204961</u>
(15445)	Excess of Income /(Expenditure)	28368	
40198	Balance brought forward	24753	
<u>24753</u>	Balance carried to Balance Sheet	<u>53121</u>	

INDEPENDENT ADVOCACY SERVICE

1995		1996	
£		£	£
INCOME			
41000	L.B. Southwark - Social Services	42230	
41000	LSLHC/formerly SELHA	42230	
-	Other Income	2875	
<u>82000</u>			87335
EXPENDITURE			
40496	Salaries & NI	45662	
2626	Office Resources	2116	
7724	Office Equipment	40	
379	Training	615	
461	General Expenses	771	
577	Travel Expenses	784	
775	Books & Subscriptions	235	
-	Printing & Publicity	774	
5605	Support Costs	3818	
3282	Rent - inc. services	4185	
<u>61925</u>			<u>59000</u>
20075	Excess of Income	28335	
26568	Balance brought forward	46643	
<u>46643</u>	Balance carried to Balance Sheet	<u>74978</u>	

I.A.S. GUYS

1995		1996	
£		£	£
INCOME			
	Lewisham & Guy's Mental		
20000	Health NHS Trust	28560	
<u>20000</u>			28560
EXPENDITURE			
3535	Salaries & NI	20735	
104	Office Resources	1890	
3468	Start-up Costs	-	
2000	Development/Supervision	2500	
-	Travel Expenses	63	
-	General Expenses	164	
95	Support Costs	2058	
58	Rent - inc. services	700	
<u>9260</u>			<u>28110</u>
10740	Excess of Income	450	
-	Balance brought forward	10740	
<u>10740</u>	Balance carried to Balance Sheet	<u>11190</u>	

N.Y.C.D.

1995		1996	
£		£	£
INCOME			
70057	L.B. Southwark	76235	
4000	Magdalene College Youth Trust	4000	
2300	Minibus Income	1420	
542	Camp Income	300	
2200	Newcomen Collett	-	
4507	Fundraising	400	
-	Fees	763	
<u>83606</u>			83118
EXPENDITURE			
61790	Salaries & NI	62317	
2781	Office Resources	1598	
1717	General Expenses	478	
1466	Minibus Expenses	2152	
600	Gym Expenses	600	
1061	Camp Expenses	1029	
1842	Activity Costs	2946	
-	Staff Training	545	
4681	Staff Recruitment	-	
-	Computer & Office Equipment	50	
7880	Support Costs	8122	
3000	Rent - inc. services	2202	
<u>86818</u>			82039
(3212)	Excess of Income/(Expenditure)		1079
6977	Balance brought forward		3765
<u>3765</u>	Balance carried to Balance Sheet		4844

SOUTHWARK OPPORTUNITY PLAYGROUP

1995		1996	
£		£	£
INCOME			
4616	L.B. Southwark	4706	
2780	Newcomen Collett	283	
1275	Walter Cole	1300	
230	Other Income	325	
2420	Capital Radio H.A.L.C.	-	
1000	French Protestant Church	2000	
1200	Fundraising	5120	
<u>13521</u>			13734
EXPENDITURE			
9969	Salaries & NI	9854	
273	Supervision/Training	20	
108	Volunteers Expenses	115	
273	General Expenses	214	
707	Meeting Room Hire	720	
194	Play Equipment	282	
636	Transport & Travel	149	
821	Staff Recruitment	-	
207	Office Resources	183	
2160	Support Costs	2224	
190	Rent - inc. services	198	
<u>15538</u>			13959
(2017)	Excess of Expenditure		(225)
3003	Balance brought forward		986
<u>986</u>	Balance carried to Balance Sheet		761

GENERAL FUND

1995		1996	
£		£	£
INCOME			
41879	Donations		26699
2553	Income from Listed Investments		2104
8337	Bank Interest		15707
11866	L.B. Southwark – Core Funding		19103
7816	Photocopying		6172
2068	Other Income		–
<u>74519</u>			<u>69785</u>
Charges to Activities			
77501	Support Costs	78887	
44677	Rent – inc. services	<u>46009</u>	
<u>122178</u>			124896
49993	Rent receivable		<u>41892</u>
<u>246690</u>			<u>236573</u>
EXPENDITURE			
<u>Administration</u>			
103085	Salaries & NI	108017	
–	Advertising for staff	7295	
13100	Office Resources	12238	
1336	Fees and Subscriptions	1165	
3148	Annual Report	3329	
3426	General Expenses	1846	
122	Travel & Hospitality	83	
3725	Audit Fees	3860	
989	Bank charges	982	
1098	Publicity	675	
1174	Staff Training	<u>3144</u>	
<u>131203</u>			142634
<u>Premises</u>			
5256	Rates	6750	
11551	Lighting & Heating	11178	
11084	Insurance	10015	
17805	Cleaning	16263	
19936	Maintenance	18510	
10000	Major Repairs	14909	
247	Residents Expenses	<u>248</u>	
<u>75879</u>			77873
<u>Other Expenses</u>			
748	Annual General Meeting	<u>574</u>	
<u>748</u>			574

*GENERAL FUND continued next column**GENERAL FUND continued from previous column*

1995		1996	
£		£	£
<u>Provisions</u>			
2410	Community Club	(68)	
729	Legal Centre	<u>5524</u>	
<u>3139</u>			5456
<u>210969</u>			<u>226537</u>
35721	Excess of Income		10036
(2636)	Loss on disposal of investments		–
53435	Balance brought forward		<u>86520</u>
<u>86520</u>	Balance carried to Balance Sheet		<u>96556</u>

NOTES TO THE ACCOUNTS
FOR THE YEAR ENDED 31st MARCH 1996

1. ACCOUNTING POLICIES:

Basis of Accounting

The accounts have been prepared under the historical cost convention, except for investments stated at market value, and in accordance with the Companies Act 1985, Statement of Recommended Practice 'Accounting by Charities' (SORP) and applicable accounting standards.

Fund Accounting

Unrestricted funds include the accumulated surplus on the General Fund. They are available for use at the discretion of the Council in furtherance of the general charitable objectives.

Restricted capital funds comprise the Premises and Equipment Funds. These funds represent the extent to which restricted funds are invested for use by the charity.

Restricted revenue funds are available for Project Activities and are subject to specific restrictions imposed by the donors.

Resources Arising

Resources arising include the total income received during the year by the centre and projects; these comprise donations, legacies, and income from fundraising events.

Grants

All grants received which relate to the year are credited to income within the Statement of Financial Activities, with unspent balances being carried forward to subsequent years within restricted funds.

Resources Used

The costs of projects comprise expenditure, including staff costs, directly attributable to the project activity. Where costs cannot be directly attributed they have been allocated to projects on a cost basis consistent with budgeted use of the resources.

Support costs comprise all services supplied centrally, identifiable as wholly or mainly in support of projects and include accommodation costs and an appropriate proportion of general overheads.

Central costs are allocated to projects on the basis of their use of services with the aim of ensuring that those costs remaining within administration relate to the management of Cambridge House and Talbot's assets, organisational administration and compliance with constitutional and statutory requirements.

Tangible Fixed Assets and Depreciation

Tangible fixed assets are stated at cost less depreciation. An amount equal to expenditure on tangible fixed assets is transferred to the Premises and Equipment Funds within the Statement of Financial Activities. Depreciation is calculated to write off the cost of tangible fixed assets by equal annual instalments over their expected useful lives as follows:

Freehold Properties	2%
Leasehold Properties	lesser of 20 years and lease period
Fixtures and Fittings	25%

Investments

Investments are stated at market value. This represents a change in accounting policy and comparative figures have been restated to reflect this.

2. LAND AND BUILDINGS:

The freehold buildings together with fixtures and fittings are valued at £1,850,000 for insurance purposes. The accounts include the cost of improvements to buildings but not the original cost as the land and buildings were given to the company as an endowment.

3. CHANGES IN RESOURCES IN THE YEAR:

The changes in resources in the year is after charging:

		1996	1995
		£	£
Auditors remuneration:	Audit fees	3,860	3,725
	other services	470	-
Depreciation		29,779	27,595

4. EMPLOYEE INFORMATION

- a. The average number of employees employed by the Company during the year was 84 (1995 – 80).
b. No remuneration or expenses were paid to any member of the Council during the year.

c. Staff costs:

	1996	1995
	£	£
Wages and Salary Costs	682241	623105
Social Security Costs	56231	54095
	<u>738472</u>	<u>677200</u>

5. TANGIBLE ASSETS:

	Freehold Premises	Long Leasehold	Short Leasehold	Equipment	Total
	£	£	£	£	£
Cost					
At 31st March 1995	335881	16926	13657	78323	444787
Additions	-	-	-	8731	8731
At 31st March 1996	<u>335881</u>	<u>16926</u>	<u>13657</u>	<u>87054</u>	<u>453518</u>
Depreciation					
At 31st March 1995	6718	15240	12294	34017	68269
Provision for year	6718	850	680	21531	29779
At 31st March 1996	<u>13436</u>	<u>16090</u>	<u>12974</u>	<u>55548</u>	<u>98048</u>
Net book amount					
At 31st March 1995	329163	1686	1363	44306	376518
At 31st March 1996	<u>322445</u>	<u>836</u>	<u>683</u>	<u>31506</u>	<u>355470</u>

6. INVESTMENTS

	Deposits Centenary Appeal	Unit Trusts General Fund	Unlisted Investments	Total
	£	£	£	£
At Market Value				
31st March 1995	27474	61839	83	89396
31st March 1996	27966	72061	83	100110

GENERAL FUND INVESTMENT MOVEMENTS IN THE YEAR

Balance at 1st April 1995	61839
Increase in unrealised surplus	10222
Balance at 31st March 1996	72061

INVESTMENT INCOME

	Rent	Bank Interest	Income from Unit Trusts	Deposits Centenary Appeal	Total
	£	£	£	£	£
31st March 1995	49993	8337	2553	1535	62418
31st March 1996	41892	15707	2104	1243	60946

7. RESTRICTED REVENUE FUNDS

Restricted Revenue Funds comprise the following unexpended balances of donations and grants given for specific purposes:

Project	Balance at 1st April 1995	Income	Expenditure	Balance at 31st March 1996
	£	£	£	£
Camberwell Advocacy Office	20519	134623	117420	37722
Legal Centre	(13208)	153349	158873	(18732)
Adult Education	19936	104609	107288	17257
Only Connect	24753	233329	204961	53121
NYCD	3765	83118	82039	4844
Futures Employment	10940	—	—	10940
People-to-People	17091	82321	83297	16115
Southwark Opportunity Playgroup	986	13734	13959	761
Artist in Community	5205	1802	4528	2479
Independent Advocacy Service	46643	87335	59000	74978
Community Club	(5374)	1889	1821	(5306)
IAS Guys	10740	28560	28110	11190
Kurdish Women & Children	1193	—	1193	—
Centenary Appeal Fund	27474	1243	751	27966
	170663	925912	863240	233335
Provisions	18582	—	(5456)	24038
	189245	925912	857784	257373

8. ANALYSIS OF NET ASSETS BETWEEN FUNDS

	Unrestricted Funds £	Restricted Capital Funds £	Restricted Revenue Funds £	Total Funds £
Tangible fixed assets	—	355470	—	355470
Investments	72144	—	27966	100110
Current assets	124122	—	230599	354721
Current liabilities	(77440)	—	(1192)	(78632)
	<u>118826</u>	<u>355470</u>	<u>257373</u>	<u>731669</u>



CAMBRIDGE HOUSE & TALBOT

*Annual
Report
1995~1996*

Centre for Social Action





President

HRH The Duke of Gloucester

Vice-Presidents

Sir Alan Cottrell FRS

Robin Guthrie

Rt. Revd. Peter Hall, Bishop of Woolwich

The Rt. Hon. Viscount Hanworth

The Worshipful Mayor of Southwark

Christopher Parish

Revd. Dr. John Polkinghorne FRS

Dame Simone Prendergast OBE

Andrew Stewart Roberts

Patrons

Richard Balfe MEP

Gerald Bowden

Betty Colman

Cllr. Jeremy Fraser

John Grant

Harriet Harman MP

Elizabeth Hartley

Simon Hillson

His Honour Judge Christopher James

John Johnson

Tessa Jowell MP

Jenny Park

Leaford Patrick

Revd. Stephen Roberts

David Sadler

Mark Smith

Ron Watts

Bruce Williams

Roger Withrington

Members of Council

Ann Bernadt

Claire Miller

Angus Gilroy

Richard Griffiths

Robert Park

Edward Roskill

Tim Ward

Registered Office

131, Camberwell Road, London SE5 0HF

0171 703 5025

Charity Reg. No. 265103

Company Limited by Guarantee
Registered in England No. 1050006

Bankers

Rea Brothers,

Alderman's House, Alderman's Walk,
London EC2M 3XR

Auditors

Chantrey Vellacott

Russell Square House, 10/12, Russell Square
London WC1B 5LE

Staff

CENTRAL RESOURCE POSTS:

Len Barratt (*Maintenance*)

Tom Carman (*Volunteer Reception*)

Marie Healy (*Funding Development*)

Joan Millbank (*Director*)

Pauline Morrison (*Finance Officer*)

Olga Philpott (*Resources and Support Manager*)

Angela Smith (*Day Reception*)

Sharon Taylor (*Evening Reception*)

Abraham Tecle (*Finance Assistant*)

STAFFED PROJECTS:

Adult Education Project

Jacqui Armour (*Tutor*)

Glennette Bowles-Dove (*Project Manager/Tutor*)

Cindy Findlater (*Admin*)

Camberwell Advocacy Project

Carole Auger (*Development Worker*)

Giles Frampton (*Admin/Information*)

Vicki Lipscomb (*Childrens Advocacy & Assessment Worker*)

Sharon Matthew (*Black Groups Self Advocacy*)

Donna Pearson (*Adult Assessment Worker*)

Louise Thorpe (*Self Advocacy Development Worker*)

Kathy West (*Project Manager/Development Worker*)

Independent Advocacy Project

Anna Carver (*Mental Health Advocate*)

Neil Huggins (*Guys Advocacy Worker*)

Angela Stanworth (*Project Manager/Advocate*)

Legal Centre

Pamela Drew (*Receptionist*)

Pamela Goodwin (*Receptionist*)

Altaf Hussain (*Community Lawyer*)

Aileen Moss (*Senior Solicitor*)

James Newey (*Locum Caseworker*)

Beryl Peckham (*Secretary*)

Margaret Wilkins (*Secretary*)

Neighbourhood Youth & Community Project

Keith Barber (*Admin*)

Victoria Ekubia (*Project Manager/Neighbourhood Youth Worker*)

Only Connect

Stan Adams-Langley (*Development Worker*)

Sherry Allen (*Development Worker*)

John Miller (*Project Manager/Development Worker*)

Dan Sturgis (*Arts Development Worker*)

Opportunity Playgroup

Laura McRoberts (*Playgroup Worker*)

Sheila Whitaker (*Playgroup Leader*)

People-to-People

Geoff Jones (*Project Manager/Development Worker*)

Rachael House (*Client Participation/Development Worker*)

Saturday Arts Club

Lucy Gunning (*Artist*)

Alison James (*Youth Worker*)

In addition, a large number of sessional and occasional staff, unpaid volunteers and project advisory group members, work with the regular employees to provide the necessary staffing to run our many activities. Too numerous to mention individually, their contributions are much valued and appreciated.

A Member of BASSAC (Urban Policy Network)



Report of the Directors

The Directors (who are the trustees under charity law) are pleased to present the following report of the year which, together with the full audited accounts, form the Annual Report of Cambridge House and Talbot for the year ending March 1996.

Principal aims and objectives

Set up as a Cambridge University Settlement in 1889, Cambridge House and Talbot is today a multi-purpose voluntary organisation working in Southwark, an inner city borough in South London.

We seek to fulfil our charitable aim of tackling the effects of poverty and discrimination by providing a range of resources and services which provide support and a means of empowering individuals, groups and communities.

Support is provided through the direct provision of projects (including educational, developmental, care, advice and community rights) aimed at a broad range of local people, across a wide range of needs.

We also provide support, advice and practical assistance (including access to low cost meeting space) to assist in the development and continuation of other local self organised community groups and small voluntary organisations.

Cambridge House and Talbot takes an active part in networks and policy initiatives to ensure that our local experience informs and influences others.

We subscribe to the Statement of Common Purposes of BASSAC - Urban Community Network, which informs our approach and methods of work.

Organisation

The charity is governed by the Directors (called The Council) who are volunteers with relevant skills and experience who are elected at the annual general meeting by the company's membership. Under the rules one third of the Council members are required to stand down at the annual general meeting and are eligible for re-election.

The Council appoints the paid chief officer (called The Director), and is the employer of all

staff (a list of permanent staff members is listed on the opposite page).

The Memorandum and Articles of Association of the charity were reviewed, and revised versions were adopted at the Annual General meeting held on October 4th 1995, following consultation and endorsement by the Charity Commission and Company House. The revised documents reflected a simplification of the governance structure, the provision of the option for the Council to take out Trustee Indemnity insurance, the importance of equal opportunities in making decisions, and provided an opportunity to carry out other advisable updating since it was last reviewed in 1973.

As a result of the adoption of the revised Articles and Memorandum of Association the old Council resigned and a new Council was elected. The names of Council members listed in this report reflects the members as at March 1996. The retiring Council members all remain connected to the charity by accepting the honorary position of Patron, which involves no formal governance obligations.

Progress during the year

Overall the charity has made progress during the year. Only one activity area has ceased to operate. The Community Club closed on September 1st 1995, following a long period of difficulties. Membership had fallen to 41 at the start of the year, there was a carried forward deficit and a break even budget could not be set. It was a regrettable but unavoidable action. Club members were invited to join the charity's other activities.

Details of the other projects' activities, and progress made, are presented under the subsequent project reports.

A re-organisation took place in the central support section leading to a much needed increase in staff hours for management of premises, personnel and administration.

The charity played an important role in convening a partnership of local organisations and bodies concerned about local regeneration in a depressed neighbourhood. A Single Regeneration Budget funding bid was headed by the charity and,

although unsuccessful, has helped lead to other initiatives and promoted partnership working. The organisation has once again shown itself to be ideally placed to identify and promote local developments, albeit with limited developmental resources at present.

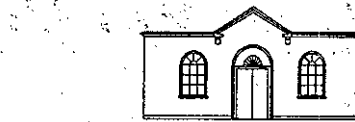
As a member of BASSAC the charity has been active in supporting a successful major capacity building programme for the community sector, and our Director was elected chair of BASSAC for a further year.

A major building refurbishment programme is being planned. Much has been achieved in the year to improve the fabric of the building. Meeting rooms have been upgraded and a training/group work space now exists to meet the changing requirements of the charity. The large hall complex has been made more accessible with the installation of a wheelchair accessible toilet. In house maintenance has increased. Nevertheless major moneys are needed to fund significant improvements, including installation of a lift, which are vital if the premises are to fit the purposes and requirements of our organisation.

Financial Report

Full financial information, including the Treasurer's report, details of the charity's assets and trustees' responsibilities report are detailed in the audited accounts. For most of the year we were without a Funding Development Officer which restricted our fund-raising capability, but nevertheless we ended the year with an increase in activity. A representation of income and expenditure is given elsewhere in this document. ♦

(EDWARD ROSKILL
COMPANY SECRETARY) *Edward Jnr Roskill*



EQUAL OPPORTUNITIES POLICY STATEMENT

Cambridge House and Talbot recognises that in Society and in our local communities power is not held equally and that groups and individuals have been and continue to be discriminated against directly and indirectly on the grounds of (for example but not limited to) race, nationality, ethnic origin, colour, religious belief, social background, sex, marital status, sexual orientation, age, physical disability, learning difficulties, mental illness, because they are HIV positive or have AIDS. This list will be referred to in this document by the key words (race, sex or disability). Cambridge House and Talbot recognises that in its present state it reflects the unsatisfactory nature of society.

However Cambridge House and Talbot seeks to celebrate and promote the cultural diversity of society and wishes to see it reflected in the work of the Social Action Centre, its users, management, employees and volunteers.

Cambridge House and Talbot therefore declares that it will introduce measures to combat all direct and indirect discrimination in its organisation, employment practices and provision of services. These measures will be put into practice through its Council, Project Groups, Members and Staff, paid and unpaid. It will work actively with groups striving to advance these ends and is determined to ensure that this Equal Opportunities Policy is implemented fully and is not just a commitment on paper.

(This statement forms part of the Cambridge House and Talbot Equal Opportunities Policy - the full document is available from Cambridge House)

15 July 1996.



User Group

photo: Lucy Gunning

From the Chair

Last year, as a newcomer to Cambridge House, I wrote that I had a lot to learn, and that I would be writing more fully this year. I still have a lot to learn, but this year has been a very exciting one to me, as I have got to know a large number of the staff, and have also met many of the service users of the various projects. One of my aims has been to pay an extended visit to each of the projects to see it in action. I am now more than half-way through, and this, together with the regular presentations which the Project Managers make to the monthly meetings of the Cambridge House Trustees, has meant that I now have a clear view of all that Cambridge House is contributing to the life of the local community.

It would seem trite to say that I am impressed by all I see; but it would in fact be an understatement. Cambridge House is doing a number of vital tasks, essential to local needs: advocacy for mental health and the elderly, care and counselling for those with learning difficulties, respite for carers, legal advice on housing, employment and benefits, training in adult literacy and in basic skills, youth work. Cambridge House also provides an important meeting venue for numerous local organisations and a place where local groups can get advice and support.

In such a vigorous and vital institution, change is part of life, and there are many changes taking place all the time within individual projects. Cambridge House itself also needs to be prepared for change on the larger scale, as it is vitally important that the whole enterprise should be seen as a whole and not just as a series of coherent but separate parts. I am in the process of having a series of one-to-one discussions with the Project Managers, and with the Director, about the way forward, before the Trustees consider their plans for the future.

It is true to say that I am finding myself far busier than expected – but this is by my own choice, as my enthusiasm has grown for all that Cambridge House does, and as I have found myself more and more excited by the prospects for the future. There are a whole range of tasks to be undertaken in 1996. For example, a working party on the future

of the Legal Centre will shortly be reporting with a positive series of solutions to the Centre's problems; and we have also set up a working party to plan a major Building Appeal which we hope to launch in the near future. In future years, there will no doubt be the need for further specialist committees of this sort.

I cannot end without paying a tribute to my predecessor John Posford, news of whose death came as a shock to us all in June. John had been a personal friend of mine for many years; he had also been a considerable friend to Cambridge House. He was Chair for 13 years; and for the last 7 years he formed a formidable team with your dynamic Director Joan Millbank. In those years, the whole scope of Cambridge House's activities has changed, both in size and in effectiveness, until it has become, as I said last year, a major support to local communities in Southwark and a recognised support agency for social change. We owe a great deal to John; and we also owe a great deal to Joan, whose continuing presence at the helm of Cambridge House ensures that the dynamism shown in the period of John's tenure will continue into the future.

Richard Griffiths
Chair of Directors

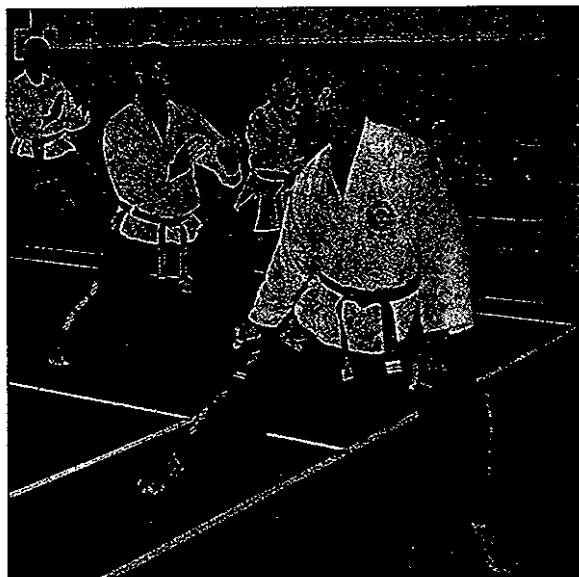


photo: Lucy Gunning

User Group

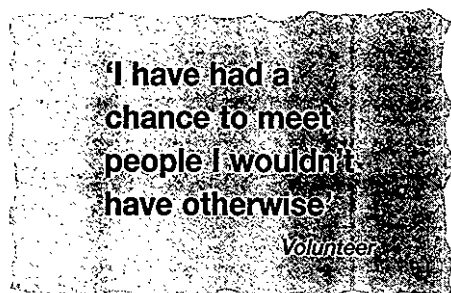
Adult Education Centre



Designing and delivering courses for adults in basic education.

We provide three levels of literacy, multi-level numeracy, ESOL (English for speakers of other languages), life skills support for students with mild learning difficulties and three levels of computer classes. We provide the teaching in relaxed and user-friendly settings in order to enhance learning.

There is an average number of 10 students per class, which ensures that students get the attention needed for both individual and group work. The need for our service continues. In the last year the student numbers have increased to 186 to date.



The centre is now offering students the opportunity to follow accredited courses, and we are currently looking at word and number power. We also aim to assist students' access into local jobs and training markets by having up to date information available and using such information within the teaching process.

We ensure that local people are aware of our services by regularly distributing publicity material and by undertaking outreach work. We place our leaflets in other venues where local people go, including employment offices, health centres, libraries, leisure centres and shops. Our outreach involves establishing links with community organisations and other local groups. We ask that prospective students are referred to us for interview and assessment. We find this method to be most affective, as we need to assess each student's level before placing them in a particular class.

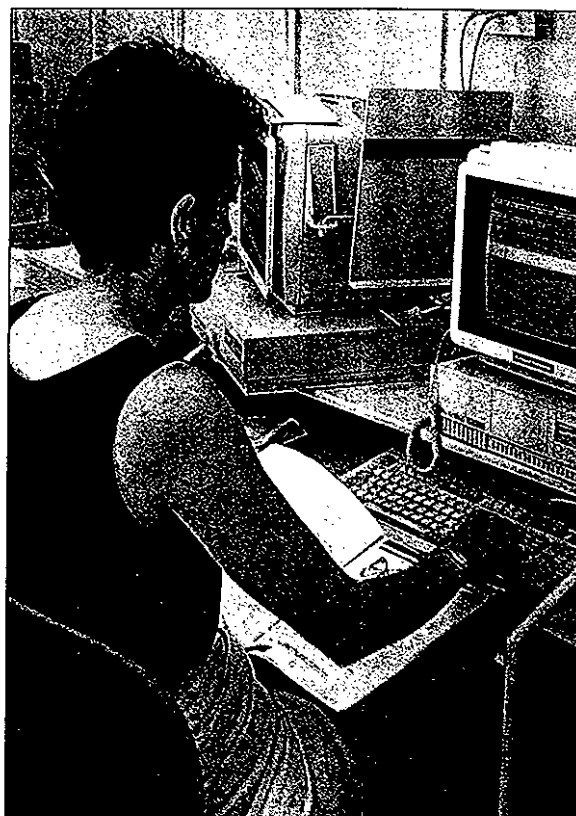


photo: Lucy Gunning

Developing computer based learning

We are funded by the Further Education Funding Council (FEFC) and have been successful in our funding bid for additional funds next year. This will go some way towards assisting us with the development of the centre. However, to upgrade our resources and carry out a much needed physical refurbishment of our centre, we will need to seek additional funds from alternative sources.

Physical access continues to be a major problem. The charity has plans to install a lift into Cambridge House, but no money is in place yet. There is also the need for us to upgrade all teaching and resource materials, as many of the resources are old or out of date. We need books that reflect current issues and which will be appropriate for our existing student groups, as using materials which reflect our students' personal experience and lifestyles is important to aiding the learning process.

Students and staff will benefit from these improvements as they will create a better environment for students and staff to work and learn.

Glennette Bowles-Dove
Project Manager

Artist in the Community

Education and empowerment through art.

The Morning Art Club was set up in May 1995 as the main focus of the project for the year. The club operates each Saturday morning, except for 6 weeks during the past year. The group is open to local children aged between 5 and 12 years old who live within the Borough of Southwark, and includes children from main stream education and children with special needs including learning difficulties. In the last year 43 children have attended, with an average of between seven and twelve at each session.

The purpose of the art club is to expand the children's experience of art. The club also provides an opportunity for children to undertake a range of arts projects, giving them more freedom and spontaneity than the national curriculum within schools can allow. In addition, the club provides a venue for children from different backgrounds and with varying needs to meet and work together. The club is a place for individual and group confidence to grow and personal skills to develop.

Sessions included working on an individual and a group basis. However they are structured so that each individual child can decide what they would like to work on. At the end of the session we gather together and each person has the opportunity to show their work and to hear feedback from the other children. This is always a very important aspect of each session. By listening to each others ideas, the children learn to receive compliments and constructive criticism. They also share opinions and ideas.

We aim to encourage the children to use a range of material and mediums. In 1995 we obtained a wide range of materials from our local scrap scheme and collected cardboard boxes from local shops. We used a range of paints, crayons, pencils and inks. Making use of everyday items has required a lot of imagination and ingenuity and means that the children can undertake similar work at home.

Developing the theme of Summer the children worked together to create a large three dimensional collage using these materials. The elements

– earth, wind and fire – have been represented incorporating movement, paintings and costumes, and again using a range of materials. The children designed, scripted and performed a show using stick puppets which they made out of waste cloth. Musical instruments (guitars, shakers, whistles, rattles and drums) have been made out of pieces of wood, empty bottles and other materials found locally. Many pictures have also been created and drawings made which are to be displayed in the Cambridge House exhibition space for others to enjoy.

Funding of the Arts Club has been made possible from two grant sources – Help a London Child 1995 and from Newcomen Collett Foundation – for which we are most grateful.

The Club has sufficient resources to continue to at least Autumn 1996. Whether the Club continues after this time will depend on an assessment of ongoing need and the project's capacity to attract further funding. The need to recruit and retain volunteers is also important to the continuation of the group as they are essential to help ensure a safe and stimulating environment.

*Lucy Gunning
Artist in the Community*



photo: Lucy Gunning

Saturday morning fun

Camberwell Advocacy Project

Providing independent advocacy for children and adults in Southwark who have learning difficulties.

The regular changes around community care, health and education services continue to affect people with learning difficulties, their families and carers. It is becoming increasingly difficult to ensure people have appropriate and good quality services, and that services respond to their personal wishes and needs. The Advocacy Office has a continuing and growing role to play helping to ensure the voices of people with learning difficulties are listened to and heard.

During the past year our work with adults has continued to include outreach work to houses and day centres, attending planning reviews for people who need independent representation, supporting individual service users in community care assessment process, provision of crisis support (which has included people at risk of abuse or involved with the criminal justice system), providing support to citizen advocates in their partnerships with people with learning difficulties, providing information to service users and carers and helping people to comment or complain about the services. Staff and advisory group members have continued to contribute to the planning and monitoring of community care and the other services.

The project was able to secure new funding to maintain and develop self-advocacy opportunities. During the year we were able to replace a self-advocacy support worker and also set up a post to support self-advocacy by service users who are Black or from ethnic minorities.

We have had to cope with a growing demand for the services of our children's and young person's advocate. She is only funded to work

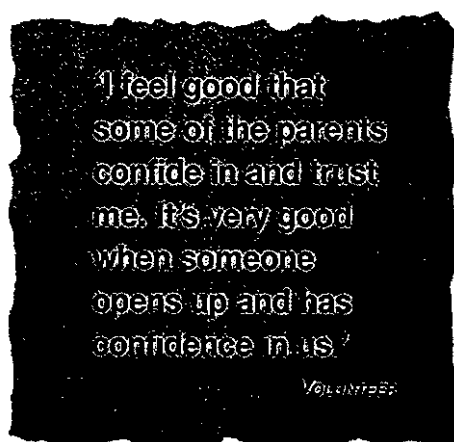
part-time and the hours available no longer cover the demand. Despite this constraint she, together with others, has encouraged the establishment of Contact a Family group in Southwark. This group is an important additional local resource to support children with disabilities and their families.

We have encouraged, and will continue to encourage, vibrant involvement of parents, an expansion of advice and support around educational issues, greater provision of key services for disabled children (eg. speech therapy, physiotherapy, holiday and after school play schemes for children with more moderate disabilities), careful planning and appropriate resources for the transition from childhood to adulthood, good general and specialist information. To this end we continue to publish 1000 copies of 'The Grapevine' bi-monthly, which have been distributed free of charge to families with children on the Disabilities Register, to special schools, parent support groups and within other

appropriate settings. This has helped to provide up to date information to both parents and staff on a range of local services and issues. Our new, part-time administration and information worker has provided invaluable support in this area and generally across the work of the project.

We received increased funding from our main funders, the Adult's division and Children's division of Southwark Social Services, and from Lambeth, Southwark and Lewisham Health Authority. I would like to thank them for their ongoing confidence in the project. I would also like to acknowledge the contribution made by all involved in the project, including the staff, for their energy, vision and commitment. Finally, and most importantly, thank you to the children and adults with learning difficulties and their families and carers who daily raise important issues about what happens to them in the real world and who keep us focused through their involvement and honesty.

*Kathy West
Project Manager*



Only Connect

Providing services for people with learning difficulties living in Southwark based on six core values: dignity and respect, participation, presence, choice, competence and equal opportunities.



Photo: Lucy Gunning

Lunch at 19 Plus

During the year we provided an increased range of services. The Holiday Respite Care Schemes ran for ten weeks during the school holiday periods, including half terms. The schemes provided stimulating opportunities for socialisation and social education for children and young people. The schemes are also valued respite care for families and carers. We offered 75 places each day, and 102 children and young people used the service in 1995/6. There is considerable pressure to expand this service and to extend its scope to provide for children with more specific disabilities.

We also ran 12 Respite Breakaways, a programme of challenging short breaks for children, young people and adults. The holidays included narrow boat weekends on the Grand Union Canal; adventure holidays offering boating, swimming, horse riding, abseiling and rock climbing; youth hostelling and a Rock 'n Roll weekend at Butlins in Brighton. Summer '95 was an eight week activity based day programme which offered a wide range of pursuits organised

It is important
for him to spend
as much time in
the community
as possible.

PARENT OF YOUNG ADULT
ATTENDING ONLY CONNECT SCHEME

in response to users' requests. Activities included horse riding, dry slope skiing, bowling, swimming, massage and visits to museums and art galleries. Time was also spent doing ordinary everyday things most of us take for granted – going out and about, travelling on the bus, going to the local cafe, going shopping or choosing the biscuits for morning tea.

This was the second year for Nineteen Plus, a person-centred skills based day programme for ten young adults aged between 19 and 26 years.

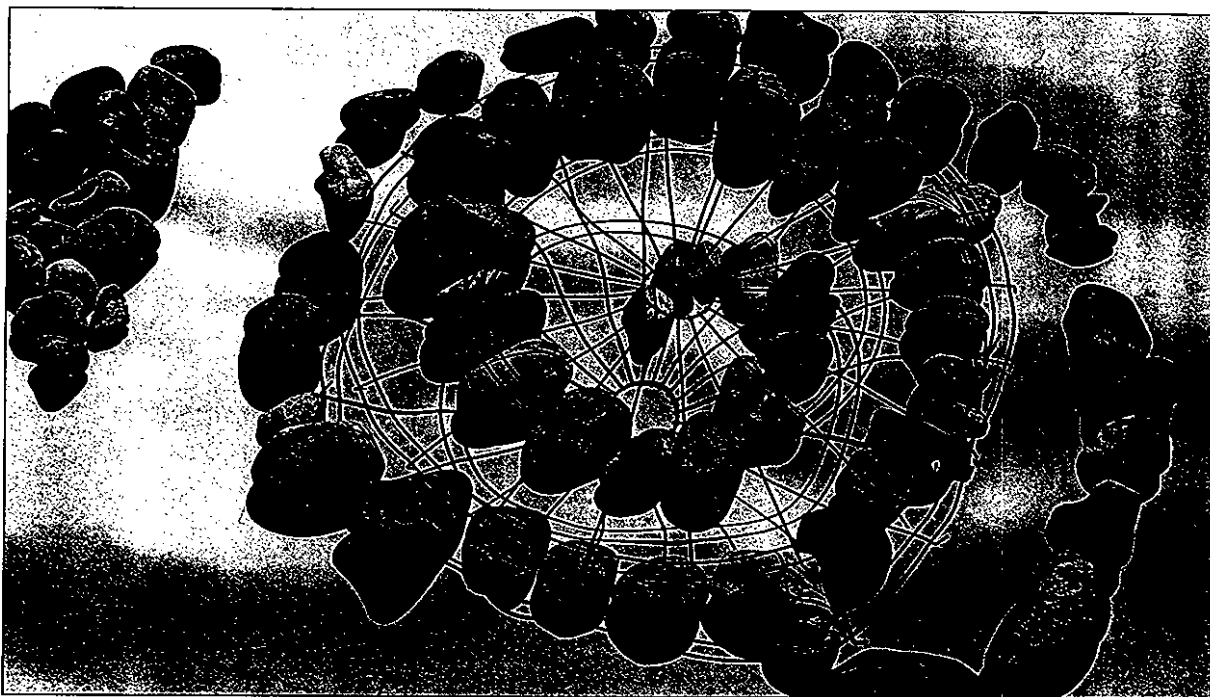
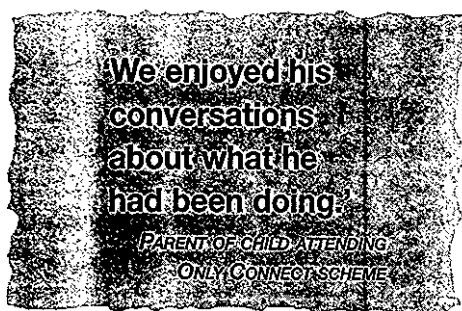


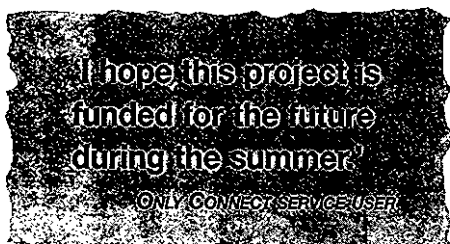
photo: Lucy Gunning

Sand art

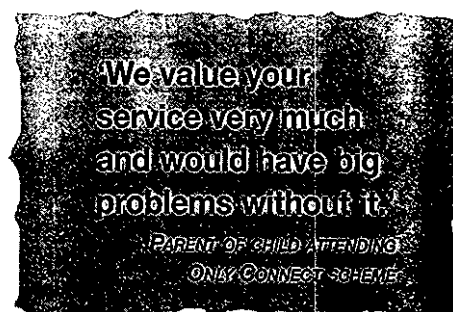


Group members took part in a range of activities offering opportunities to work on and improve their abilities to live more independently within the community. For example, travel on public transport, shopping, ordering a meal in a cafe.

The project continued its commitment to arts based work with people with learning disabilities. Four workshops were organised and run and a total of 56 children and adults took part in these activities. Their work was exhibited locally.



We were able to secure funding to expand into new areas in 1996. BBC Children In Need generously allocated three years funding to set up an after school club. This service is to be based at the two special schools in Southwark, running four evenings a week for ten children each evening. Southwark Council's Education and Leisure Department agreed two grants to fund a leisure group for people over 35, and arts based



curriculum support workshops for children. 'Only Connect' plans to continue to expand. We know there are still many unmet needs for our client group. All this would not be possible without the support and hard work of an army of several hundred people – volunteers, sessional staff, project and central staff team, funders, parents and carers and our service users themselves – thank you.

John Miller
Project Manager

Independent Advocacy Service

Providing support and representation to people, primarily to older people, mental health service users, people with physical disabilities and their carers, to ensure that they receive the community care they need.



photo: Lucy Gunning

Speaking up for one's rights

During the last statistical period IAS dealt with 113 enquiries and 83 cases. The main area of work was care management, in particular issues with the quantity and quality of care packages, assessment of care needs, including care programme approach and discharge planning and obtaining access to assessments. IAS also assisted with 17 complaints under the community care legislation.

In the last year we have worked with Southwark MIND to commission research into facilitating user empowerment and participation. This major piece of work is intended to influence policy makers on the importance of involving users in service planning and provision. IAS staff have also worked

with users of a local day centre which is being altered to ensure that the user's views and needs were taken into account fully. In conjunction with Social Services' inspectors and Cambridge House Legal Centre, work has been undertaken recently with the residents of a residential care home, to look at their rights and options.

Early in 1996, the project was asked to support tenants of sheltered housing units to elect representatives to participate in a working party with local authority councillors to consider options for the future of their service. We are also working with the tenants to form their own tenants' committee from which the four working group representatives can be elected. Both groups meet regularly and we support them through provision of newsletters and information, and by helping the tenants to speak for themselves.

We have also worked with long-stay patients at Guy's Hospital and their families to make the necessary transition from a nursing home in Guy's to a nursing home in the community. This is the first time IAS has worked in the area of NHS continuing care.

Project staff have been key participants in the development of the local paid Advocates Group. Most significantly the group has undertaken joint working with Social Services' staff on developing and improving the operation of their complaints system. We have also been active in issues of service charging, continuing care, developing the community care charter and promoting community care plan consultation exercises.

We have also played a major role in developing a unique whistle blowers initiative in the Borough aimed at supporting Social Services' staff to speak up against poor practices in community care.

Over the next year it is hoped finally to develop a project to support and empower people living in residential and nursing homes and to continue developing our work with people from the black and ethnic minority community who have community care needs.

The project has been the base for the Guy's Advocacy Project (GAP) – a two year pilot scheme offering independent advocacy to mental health in-patients at Guy's Hospital. GAP provides a casework service and access to independent support and information, with a particular focus on

empowerment of service users and highlighting quality assurance issues. The project's primary brief is also to make recommendations for the future development of mental health advocacy at Guy's.

**'I couldn't have
done it without
your support.'**

IAS SERVICE USER

Information, support and advocacy has been provided from the office base and at regular sessions held on the wards. To date the project worker has dealt with 198 single enquiries and 81 cases. The largest number of issues dealt with were about treatment and care standards, self esteem and cognition, legal matters, community services, but queries have also included ward relationships, hospital services/environment, physical health concerns, employment/training, and other areas.

GAP has been supported by a project advisory group, comprising a majority membership of mental health users, with clinical staff and Trust management representatives.

**'Thank you. You are
the first person in the
process to listen to
me and give me the
information I needed.
The experience has
been empowering for
me and moved the
whole situation along.'**

IAS service user

The report assessing and recommending the future advocacy needs is being drafted and is involving a wide range of services users, Trust staff and community organisations offering support services. The final report with recommendations will be presented in the Autumn of 1996.

Neighbourhood Youth and Community Development Project (NYCD)

Providing fun activities for young people.

The project works with children, young people and young adults, aged between 5 and 25 years and offers a range of activities which are enjoyable, and which focus on the social education and personal development needs of the participants.

1995-6 was the final year of a three year partnership arrangement whereby Southwark Council Youth Office provided us with funding to run the neighbourhood youth work provision in the Camberwell and Walworth areas. This has involved running a number of evening clubs for young people over 11 years, provision of school holiday activities and undertaking street work to make contact with young adults. We have also had the brief to support other local voluntary youth work groups running activities in the neighbourhood.

Our clubs and street work have mainly taken place on local estates, in the tenant halls and on



photo: Lucy Gunning

In the splash with NYCD!

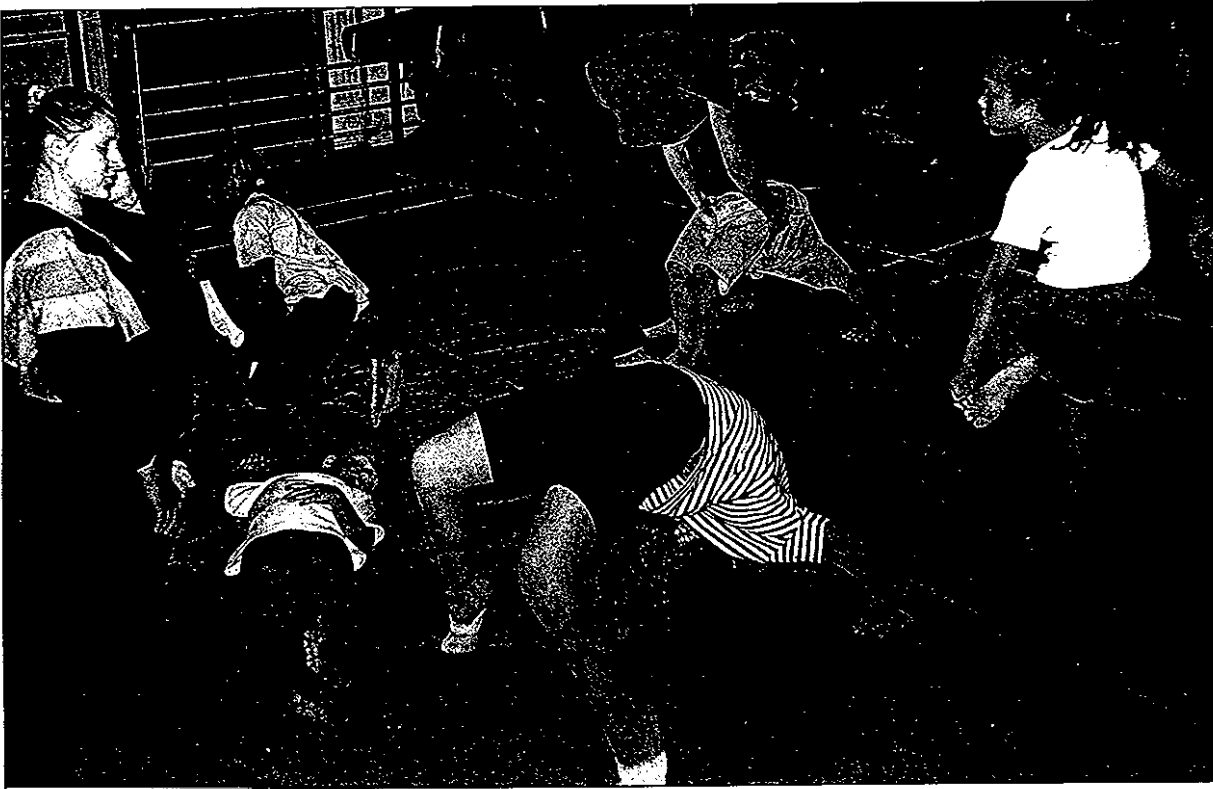


photo: Lucy Gurney

Stretching and tumbling at the gym club

the estates' open spaces. These services are run in line with Southwark Youth Service's delivery policy and practices, which we have also been involved in formulating as a local partner in youth work provision.

Late in the year we received additional funding to set up work in our local secondary school. Working in close co-operation with the Head and the teachers we have helped deliver the personal health and social education aspects of the national curriculum, supported the Duke of Edinburgh scheme, run an after schools young women's group addressing leadership skills and equal opportunities issues, and assisted in the provision of information and advice on issues of concern directly raised by the young people.

We also participated in a youth work providers group arising for a community safety initiative set up on a large depressed estate bordering Camberwell Green. The aim of the group is to avoid unnecessary duplication and to maximise youth provision for the estate's young people.

We are in the process of renegotiating a further three year service agreement with Southwark Youth Office, and will be working in a geographically smaller neighbourhood in the future.

We also provide other support which is independently funded through our own fund-raising. The rhythmic gym club attracts boys and girls aged 5 upwards, providing them with an opportunity to acquire new skills. A number are preparing for competitions. Our campsite based at our President's estate in Oundle remains a popular venue for youth holidays. Regrettably our minibus will need to be disposed of and another more suitable model fund-raised for in the new year, in order that we meet the incoming safety regulations.

One of our primary objectives has been to research and develop new ways of working with young people. During the year we set up a group for young men which has addressed issues around respect and treatment of others, developing listening and negotiating skills. We envisage that future work will develop around issues of roles in gender and interpersonal relationships. We also plan to set up a users forum where young people can have a more direct say in planning the youth work in the neighbourhood and our project's contribution.

Victoria Ekubia
Project Manager

Legal Centre



**Making the law accessible
to people with limited means.**

The Legal Centre continues to provide free legal advice, assistance and representation to people living and working in Southwark. We also provide advice to local voluntary groups. Through the provision of office based casework and by undertaking home visits and outreach work the Centre aims to make people aware of their legal rights and the legal remedies which are available to them, and to assist them in enforcing such rights and pursuing such remedies.

The Centre's statistics show that in 1995 the three lawyers conducted 1637 interviews of which 1041 were first interviews with new clients and of which the remainder were second or subsequent interviews.

Demand for advice and assistance in the area of housing remains high and represents by far the largest proportion of the Centre's work in the last year. We also continue to receive a large number of enquiries relating to employment problems. We have maintained our policy of representing clients at all hearings at courts and tribunals, save in very exceptional circumstances where it is impossible

to do so. We have also participated in the duty solicitor scheme at Lambeth County Court. This has involved attending Lambeth County Court approximately once every four weeks to offer advice and representation to Southwark Council tenants who are facing eviction from their properties and who, through fear, lack of awareness of the sources of help or financial constraint, had not been able to obtain advice prior to the hearing. The scheme appears to be working well.

The Centre continued to support Southwark Day Centre – a local project supporting homeless people

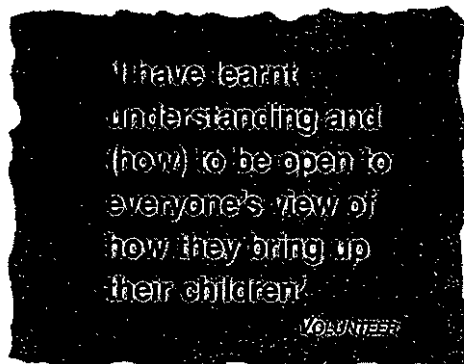
– by providing legal advice and assistance to their clients to whom such help would not otherwise be available.

Staff changes towards the end of the year has meant that we have had some difficulty in maintaining some work areas. We are therefore especially grateful to our volunteers from Macfarlanes

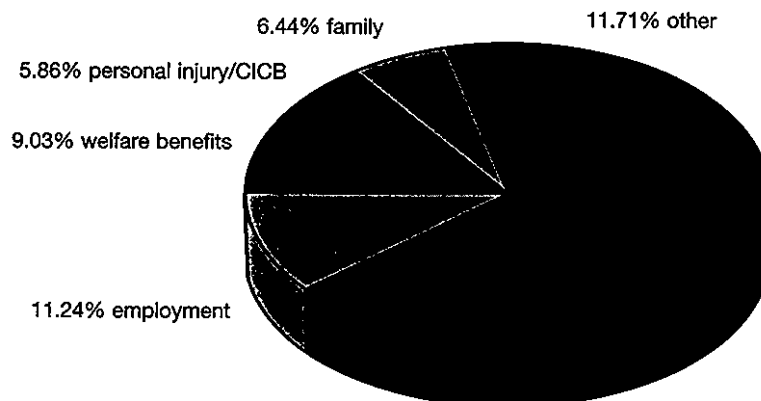
solicitors who give up their free time for us and our clients on Tuesday evenings to help run the evening advice session.

We are presently examining how best to respond to community needs in the future and how to ensure that the Centre is able to meet these needs most effectively.

*Aileen Moss
Senior Solicitor*



Legal Centre Statistics for 1995 show new cases related to the following areas:



Southwark Opportunity Playgroup

Providing a twice weekly play development facility for under fives of mixed abilities and needs, and support to their parents and carers.

As an integrated group at least 50% of the children have a special need or disability, and as such we are a unique under fives' play facility in Southwark. In the last year we have given support to 51 children, 27 of which have special needs or disabilities.

He has learnt a lot from the children with disabilities. He often helps one little boy with a physical disability to use the slide. He's learnt understanding and patience.

MOTHER OF A FOUR YEAR OLD WHO ATTENDS THE OPPORTUNITY GROUP

The range of special needs and disabilities in the group in the last year has included physical disabilities, learning difficulties, Cerebral Palsy, visual impairments, hearing impairments, eating problems, emotional and social problems, and speech delay. Usually children are referred to us by a health visitor or other professional, but parents can apply for a place directly. Many children simply need space to play, contact with other children, and opportunities to help stimulate their educational and social development. Many children live in high rise accommodation, on estates which do not have play facilities. Many live in circumstances of financial hardship. A lot of parents attending the group have told us that without the group they would be isolated and say



photo: Lucy Gunning

Storytime

how they value the opportunity to get together with other parents for support. Feedback from parents also indicates how the group helps them to increase their skills in childcare and understanding of the importance of play in their child's development.

Each session always includes creative art activities, which in this last year has included

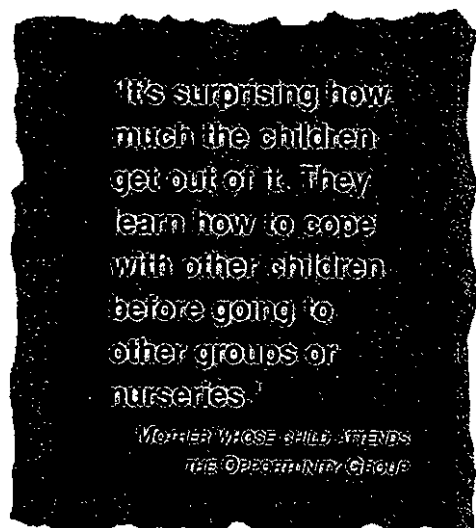
She's an only child and likes to make friends with others. For me meeting other parents helps. It helps us both socially.

MOTHER OF A TWO YEAR OLD WITH SPECIAL NEEDS WHO ATTENDS THE OPPORTUNITY GROUP

building and decorating a large cardboard tree and making mobiles. In the summer we set up a display of art work made by children in the exhibition space at Cambridge House. The spontaneous and energetic paintings and the thoughtfully constructed models looked very good up on the walls. Parents, children and other visitors

to Cambridge House enjoyed seeing them. Other regular activities include reading stories, singing and music making, use of a home corner and construction toys, dressing up, and group games. We have also been on some trips to local places of interest including a local city farm.

Volunteers have a crucial role in the group as they help provide the necessary staff numbers to ensure a safe and stimulating play environment. They help organise and run play and art activities, support parents, and help with the day to day administration and record keeping. Our volunteers have a particular interest in working with children.



Some are experienced and trained in play work. Others are seeking work experience to help their career development. In the last year a young woman with learning difficulties who has an ambition to work with children joined us in a work experience placement.

Once again we have been supported by London Borough of Southwark Under 8's Committee with a grant, but unfortunately this only meets approximately a quarter of our expenditure. The rest has to be raised from donations and once off grants. Insecure funding means that we are constantly fund-raising just to maintain our existing level of provision. Our objective in 1996 is to secure more long term funding in order to allow us to focus more worker time on directly developing the project to meet more under five's needs.

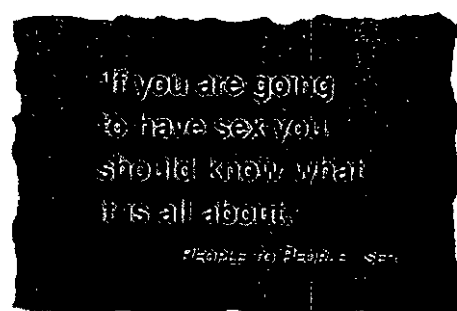
Sheila Whitaker
Play Group Leader

People to People

Supporting adults with learning difficulties in celebrating, exploring and developing who they are.

People to People gives people with learning difficulties support to become more independent, to make choices and to lead fulfilling lives. We do this by running groups, offering counselling and running social events. The last year has been our most challenging and rewarding yet. We ran seven groups involving 60 people in massage, two sex education, promoting self esteem, a Black users group, a women's and a men's group. Each group was focused on specific topics and had facilitators to organise sessions and ensure that everyone speaks out, shares ideas and listens to others in a safe and confidential setting.

During the year we developed the sexual health groups. We believe that everyone has a right to clear and user friendly information about sex and sexuality. Lack of correct and up to date information about sex means that people can be vulnerable and at risk of exploitation, abuse or unsafe sex, and many people who use our project say how little they know about sex and how hard it is for them to make sexual relationships. We see this as an important development area for our project.



Over the last year we have continued to provide a unique service called 'Talking Shop'. This service offers counselling to people with learning difficulties over a wide range of issues including bereavement, loneliness and isolation, and coming to terms with the label 'learning difficulty'. Many mainstream counsellors are unwilling or unable to counsel people with learning difficulties and therefore people have very little opportunity to explore their emotional lives.



People To People is currently planning its development over the next three years and we are expecting to develop new services that directly meet the needs of people with learning difficulties. We shall be talking to our users and everyone involved in the project to find out what they think. We are particularly interested in developing work within the areas in people's lives that usually get put to one side because they are not considered appropriate by others or which are controversial, including sexuality and emotional lives.

**'We chat and put
the world to rights.'**

MEMBER OF THE PEOPLE TO
PEOPLE UMBRELLA EVENINGS

**'It's good fun. You
meet people. We
discuss things in a
way everyone can
join in.'**

MEMBERS OF THE BIG DISCUSSION
GROUP, PEOPLE TO PEOPLE PROJECT

Financially, it has been a difficult year as important areas of statutory and three year funding finished. We are grateful to Charity Projects and Bridges Trust for seeing the value of client participation work for young adults and to Southwark Social Services for the core grant which helped prevent a funding deficit. The challenge in 1996 will be to make the project financially secure for the next period of time. We would like to take this opportunity to thank all the service users, agencies and funders for the enormous amount of support and encouragement that we have received.

*Geoff Jones
Project Manager*



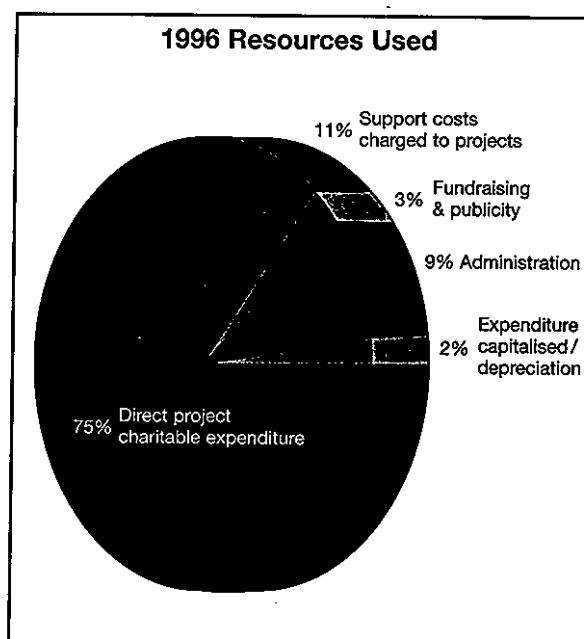
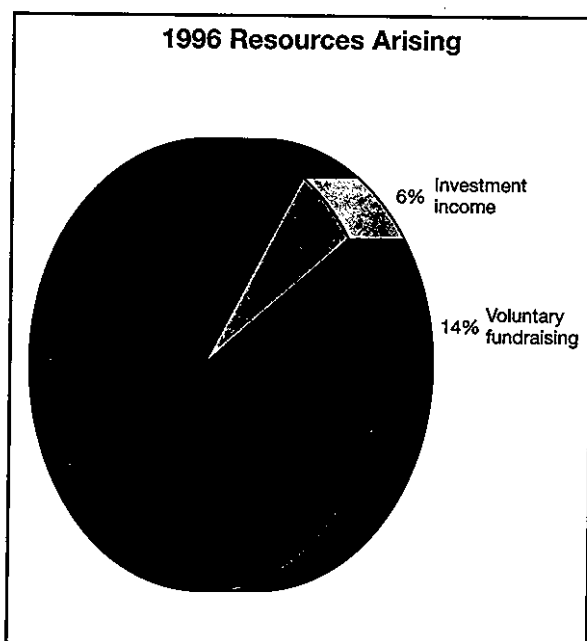
photo: Sally Lancaster

In the massage group

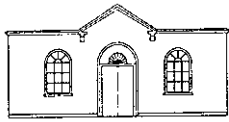
Statement of Financial Activities

For the year ended 31st March 1996

	Totals 1996 £	Totals 1995 £
RESOURCES ARISING		
Voluntary fundraising incl. income	147526	188365
Grants receivable incl. contracts	829117	751747
Investment income incl. capital	60946	62418
GROSS RESOURCES ARISING IN THE YEAR	<u>1037589</u>	<u>1002530</u>
RESOURCES USED		
Direct project charitable expenditure	(738344)	(728135)
Support costs charged to projects	(107810)	(95142)
Fundraising and publicity	(27391)	(27036)
Administration	(85880)	(85652)
Expenditure capitalised	8731	31465
Depreciation	(29779)	(27595)
Provisions	-	-
RESOURCES USED IN THE YEAR	<u>(980473)</u>	<u>(932095)</u>



From audited accounts which are held by Company's House and the Charity Commission. Full copies available on request from Cambridge House and Talbot.



Major Donors 1995-1996

We are deeply grateful to all those who have helped to fund the work of Cambridge House and Talbot and its projects. We would like to extend our special thanks to the following for their funding and the positive changes they have brought to people's lives.

Aerial Facilities • Alchemy Foundation
Anonymous Donors • Antony, Gold & Muirhead
Bank of England • BASSAC
BBC Children in Need
Beatrice Laing Foundation
Benham Charitable Trust • T.R. Bevan
Brixton Estates Charitable Trust
Capital Radio – Help a London Child
Sir Andrew Carnwath Charitable Trust
Charity Projects • City Parochial Foundation
Betty Colman • Courage Group Charitable Trust
Coutts Charitable Trust • R.T. Elmhirst
Emmanuel College • Fitton Trust
Freemason's Grand Charity
French Protestant Church of England
Further Education Funding Council
C.S.H. Geffen • Godlington Charitable Trust
Goldsmiths Company
Harold Hyam Wingate Foundation
Simon Hillson • S.R.B. Jackson
His Hon Judge James • Joint Finance • R.H. Jones
Lambeth, Southwark & Lewisham Health Authority
Mrs F.B. Laurence Charitable Trust
Legal Aid Board
Lewisham & Guys Mental Health NHS Trust
Linklaters & Paines Foundation
London Borough of Southwark
London Docklands Corporation • H.R.L. Lumley
MacFarlanes (Embleton Trust)
Magdalene College
Magdalene College Youth Trust
Metropolitan Public Gardens Association
National Health Service Trust
Newcomen and Collett Foundation
Parish Charitable Trust • R. Park • H & N Paxton
B.S. Pell (*deceased*) • G.S. Plaut Charitable Trust
John Posford (*deceased*)
Simone Prendergast Charitable Trust
Price Waterhouse • W.A. Prideaux (*deceased*)
Royal Bank of Canada • Save & Prosper
Selwyn College • Mr & Mrs Shokunbi
Smith & Williamson Securities
St. John's College • A.K. Steward-Roberts
Tom Stoppard • Tallow Chandlers' Company
Sir Jules Thorn Charitable Trust • Trinity College
Truemark • Tudor Trust
University of Cambridge • University of Kent
Walter T. Coles • Westminster Under School
D. West • Bruce Williams

Community Groups and Voluntary Organisations who have used Cambridge House facilities and/or received developmental support in the last year include:

AAWAZ Asian women group
Advisory Centre for Education
Alcoholics Anonymous (2 groups)
Age Concern Southwark
ADT Fourth World
Badminton Club
Becham Koroya Kuo
Big Swing Band
Black Organisation of Learning Difficulties (BOLD)
Camberwell Circle Club
Camberwell Outreach
Camberwell Pensioners Action Group
Camberwell Supported Flats*
Carefree
Caribbean Ecology Forum
Children's Country Holiday Fund
Children Society Rights and Complaints Project*
Circus Bumbelini
Encore Leisure Group
FAB Youth Club
Family Welfare Association
Friends of the Earth (Southwark)
Get Fit Be Happy keep fit group
Happy Flowers learning disabilities gardening project
Hollington Youth Club (Comber Grove)
LWO Christian Church
Magdalene Youth Trust
Narcotics Anonymous
National Union of Students
Patchwork work experience project for people with learning difficulties
Partners in Prevention Youth Organisation
Penny Farthings Youth Dance Group
Play Training Project
Rainbow Playgroup
Redder Splash Womens' Art Group
Reformed Ogboni Fraternity Nigerian cultural group
Salvation Army
South London Umbrella Group of GPs
Southwark Advocates Group
Southwark Autism Group
Southwark Carers Association*
Southwark Community Care Forum*
Southwark Contact a Family
Southwark Council for Community Relations
Southwark Counsellor Group
Southwark Crossroads
Southwark Day Centre
Southwark Mediation Project
Southwark Mind
Southwark Pre-School Learning Alliance
Southwark Pre-School Learning Alliance Black Workers Support Group
Spiritual Healers
User Research Project Southwark Mind/Tizard Centre
Walworth Triangle Forum Urban Regeneration Group
Welfare State Network
Worldwide Church of God
Wu Shu Kwan Chinese Boxing Group

* These organisations have their project offices within Cambridge House

In addition a number of statutory organisations use our resources, including:

After Hours Project (King's College School of Medicine)
Joint Community Care Planning Groups
Lambeth Southwark Lewisham Local Medical Committee
Southwark Education and Leisure Dept.
Southwark Community Services and Planning Unit
Southwark Equalities Unit
Southwark Social Services Contract and Purchasing Section
Southwark Sheltered Housing Tenants' Committee
Southwark Sheltered Housing Unit working group

Policy initiatives receiving support include:

BASSAC (Urban Policy Network)
Law Centre Federation
Voluntary Sector Consultative Committee

