

ASG/14



Companies House
— for the record —

169(1B)

Return by a public company purchasing its own shares for holding in treasury

CHWP000

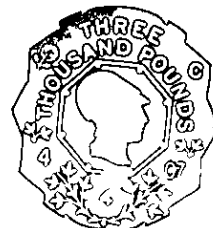
Pursuant to section 169(1B) of the Companies Act 1985

Please complete legibly in black type or bold block lettering

Company Number 427958

Company Name in full GARTMORE EUROPEAN INVESTMENT TRUST plc

Please do not write in the space below For HM Revenue & Customs use



Note
This return must be delivered to the Registrar within a period of 28 days beginning with the first date on which shares to which it relates were delivered to the company. Shares placed in treasury must be "qualifying shares" as defined by section 162(4) of the Companies Act 1985

PART A PURCHASE BY COMPANY OF ITS OWN SHARES FOR HOLDING IN TREASURY

Class of shares (ordinary or preference etc)	ORDINARY	ORDINARY	ORDINARY
Number of shares	45,989	59,600	15,500
Date(s) shares delivered to the company	15 MARCH 2007	16 MARCH 2007	19 MARCH 2007
For each share			
Nominal value	50 p	50 p	50 p
Maximum price paid	585 70 p	589 00 p	573 00 p
Minimum price paid	585 70 p	589 00 p	573 00 p

The aggregate amount paid by the company for the shares to which this return relates was

£ 709,217

Stamp Duty is payable on the aggregate amount at the rate of 0.5 % rounded up to the nearest multiple of £5

£ 3,550

PART B: FULLY PAID BONUS SHARES PLACED IN TREASURY PURSUANT TO SECTION 162C(6) OF THE COMPANIES ACT 1985

Class of shares (ordinary or preference etc)			
Number of shares			
Nominal value of each share			
Date(s) shares delivered to the company			

**Delete as appropriate

Signed

[Signature]

Date

20 MARCH 2007

(*a director / secretary / administrator / administrative receiver / receiver manager / receiver)
for Gartmore Investment Limited

You do not have to give any contact information in the box opposite, but if you do, it will help Companies House to contact you if there is a query on the form. The contact information that you give will be visible to searchers of the public record

LESLIE POWELL
GARTMORE HOUSE, 8 FENCHURCH PLACE,
LONDON, EC3M 4PB Tel 020 7782 2649
DX number DX exchange

When you have completed and signed the form and it has been stamped by the HM Revenue & Customs please send it to the Registrar of Companies at
Companies House, Crown Way, Cardiff, CF14 3UZ DX 33050 Cardiff
for companies registered in England and Wales or
Companies House, 37 Castle Terrace, Edinburgh, EH1 2EB
for companies registered in Scotland **DX 235 Edinburgh or LP - 4 Edinburgh 2**



A11 13/04/2007 746
COMPANIES HOUSE

ge

FRIDAY

Notes for completion

1. If this return shows that treasury shares have been cancelled, before the form is delivered to Companies House it must be "stamped" by HM Revenue & Customs to confirm that the appropriate amount of Stamp Duty has been paid **If the return has not been stamped HM Revenue & Customs penalties may apply.** HM Revenue & Customs Stamp Office is located at:

London Stamp Office
Ground Floor
South West Wing
Bush House
Strand
London
WC2B 4QN

Tel: 020 7438 7252/7452

Cheques for Stamp Duty must be made payable to "HM Revenue & Customs, Stamp Taxes" and crossed "Not Transferable"

2. After this form has been "stamped" and returned to you by HM Revenue & Customs it must be sent to the Registrar of Companies (addresses overleaf)
3. Note: If this return shows only that treasury shares have been sold or transferred (that is, none have been cancelled), the form should be sent directly to Companies House.